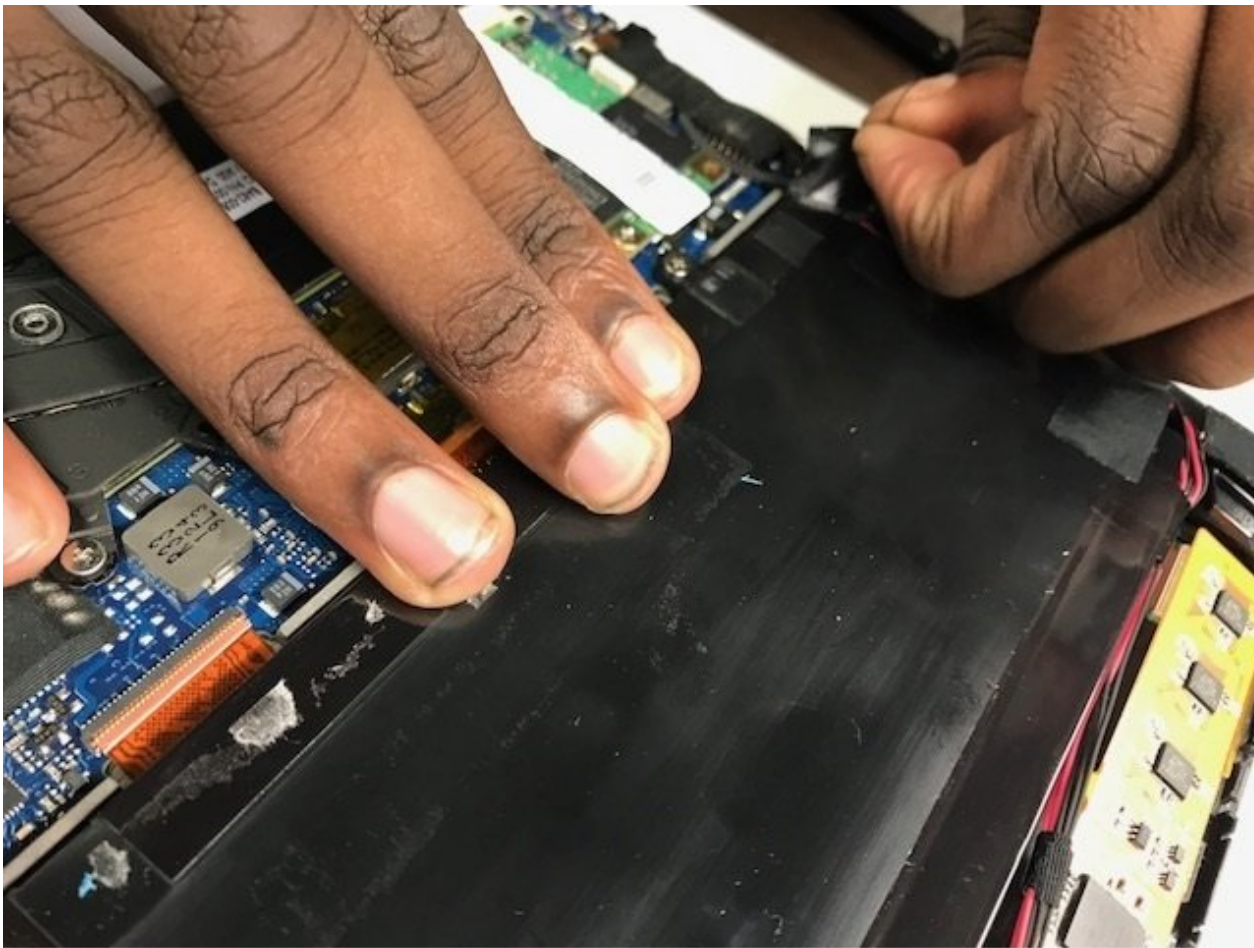




# Samsung Series 7XE700T1A Battery Replacement

Written By: james





## TOOLS:

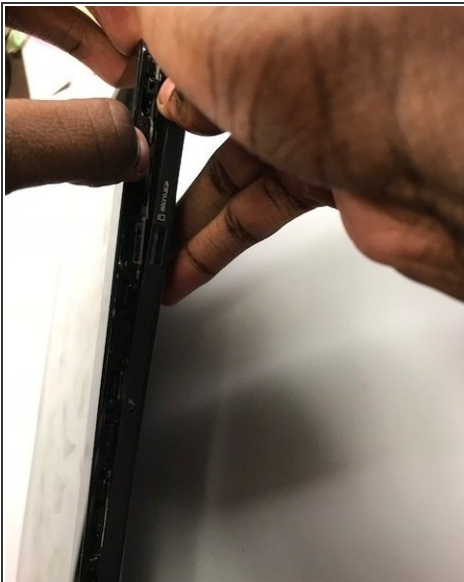
- [Phillips #000 Screwdriver](#) (1)
-

## Step 1 — Back panel



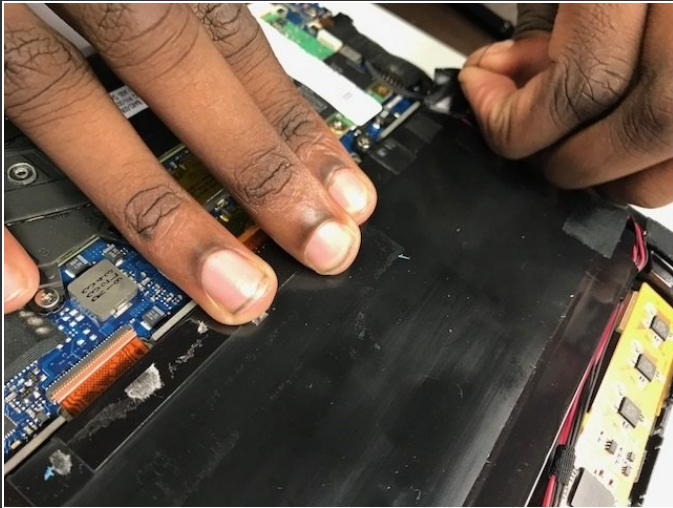
- Remove the microSD card before attempting to open the device. Wedge the opening tools inside the device and move it around the perimeter (between the black and silver panels, not between the glass and the black panel) until you have loosened the adhesive that is keeping it together.

## Step 2



- With your hands, open up the back panel, separating it from the tablet.

## Step 3 — Battery



- With the back panel removed, take the tape off the battery restricting it from coming loose.

## Step 4



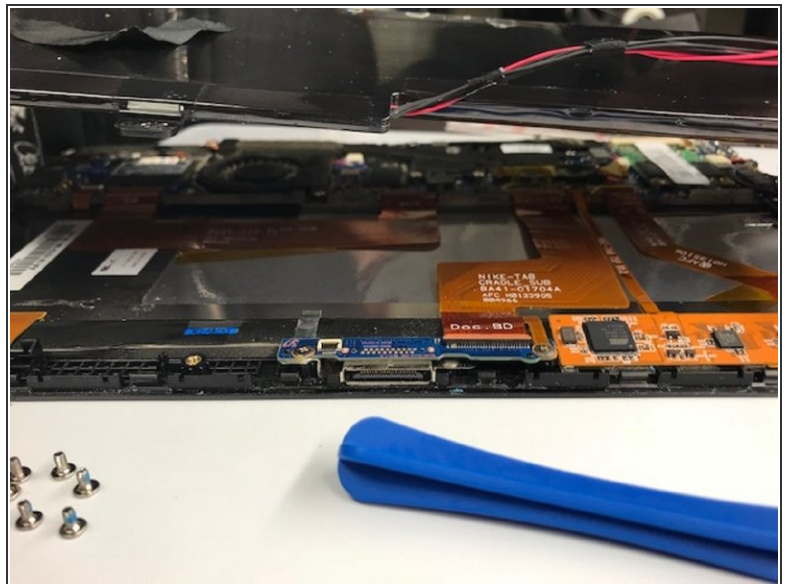
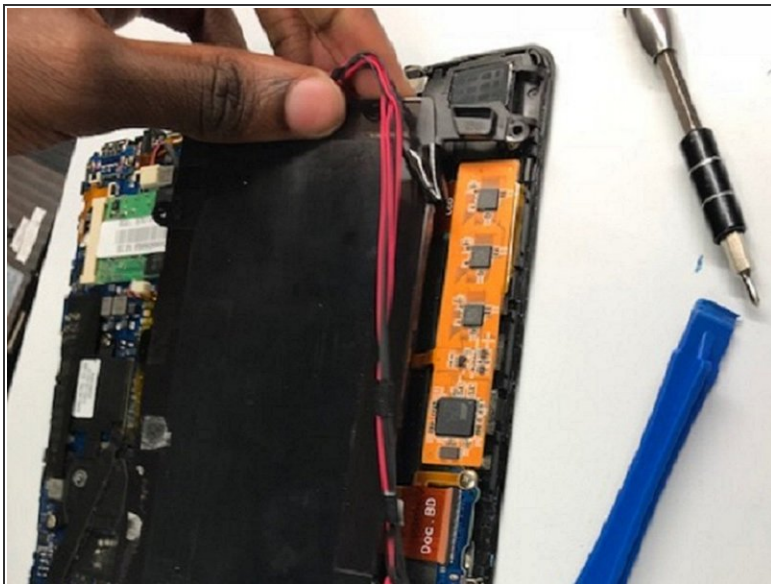
- Using the FH000 phillip screwdriver, unscrew the screw that connects the battery to the motherboard, releasing the battery.

## Step 5



- Lift the clamp that is holding on to the red and black wires by using a spudger.
- Remove the wires from the clamp.

## Step 6



- After all the screws are removed, and all wires are detached, lift the battery away from the tablet.

To reassemble your device, follow these instructions in reverse order.