



# iMuto 20000mAh Portable Charger Teardown

The iMuto Taurus X4 charger wasn't meant to be disassembled. The micro USB charging port broke on my device, so I decided to use brute force to look inside.

Written By: Polack



---

# INTRODUCTION

How I chopped open the iMuto charger to see what was inside and find the loose piece of my broken micro USB charging input port.



## TOOLS:

- [Mini Screwdrivers](#) (1)
  - [Needlenose Pliers](#) (1)
  - [Diagonal Cutter](#) (1)
-

## Step 1 — The iMuto 20,000mAh Portable Charger



- The iMuto 20,000mAh Portable Charger

## Step 2 — Chop Chop!



- Using micro screwdrivers, needle-nose pliers, and a diagonal cutter... Leverage and pry the plastic band

until you can chop it with the diagonal cutters.

### Step 3 — Pry off the case top with a screwdriver.



- Using a screwdriver, wedge between the plastic band and the case top, then use a twisting motion in the direction like you would driving a screw to work your way around the case, prying the case top from the middle band of plastic.

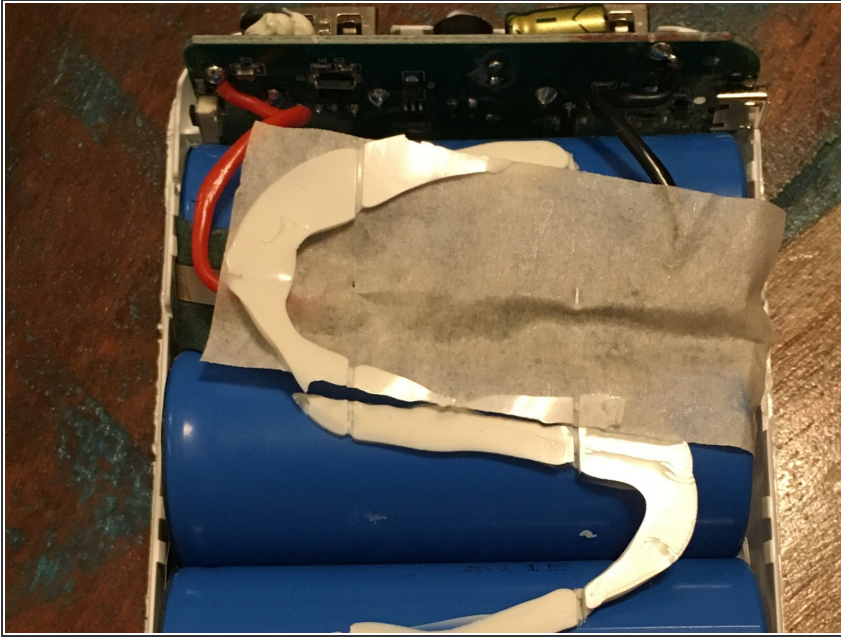
### Step 4 — This Charger Isn't Meant For Disassembly.



- Once you ungracefully chop and pry the case off of the charger, you can see why it is not meant to be disassembled or repaired. The case has clips that hold the case together and these clips can't be easily unclipped.

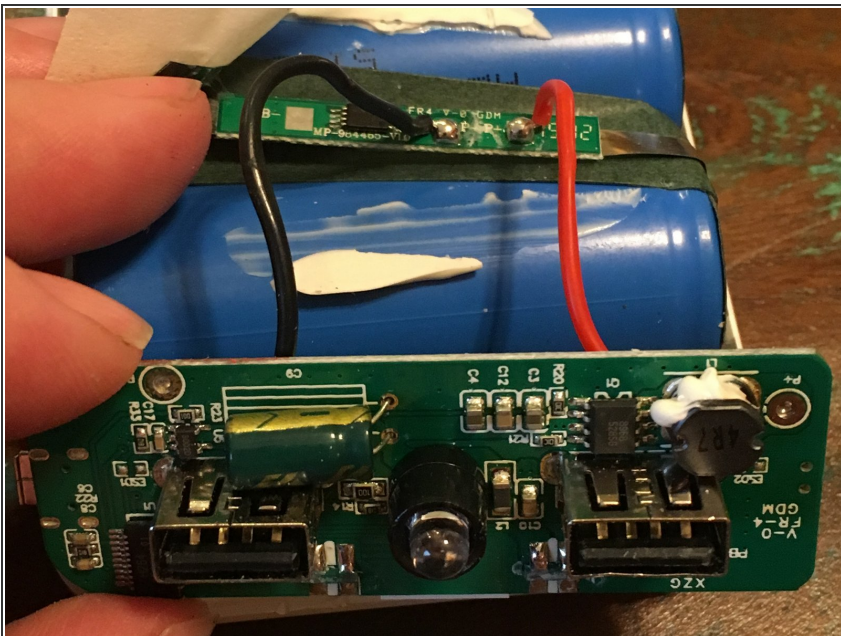


## Step 5 — Lots of glue...



- If you have difficulty prying the case off, it's because of all the glue holding it together... Pry harder!

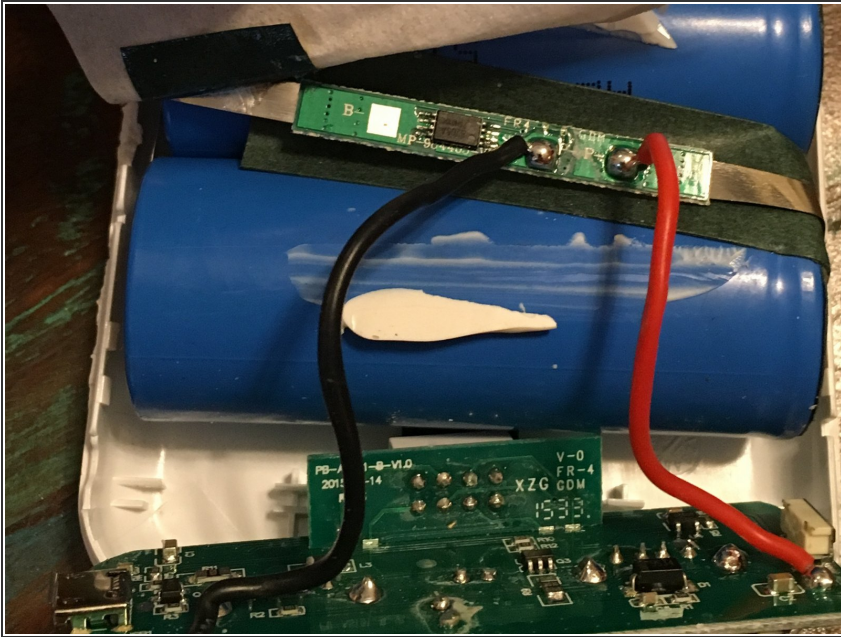
## Step 6 — Main Circuit Board



- Here's a look at the main circuit board. The micro USB charging port is hidden at left, the two main USB

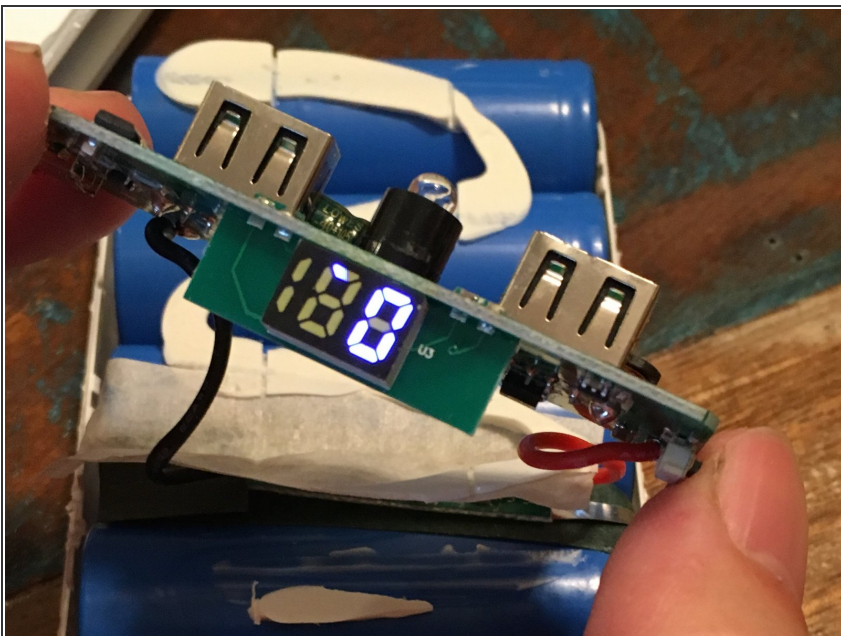
ports are in front on either side of the light, and the number display is hidden at the bottom.

## Step 7 — Battery Board



- There is a smaller circuit board, presumably for voltage regulation, that connects to the battery bank and then, via red and black wires, to the main circuit board.

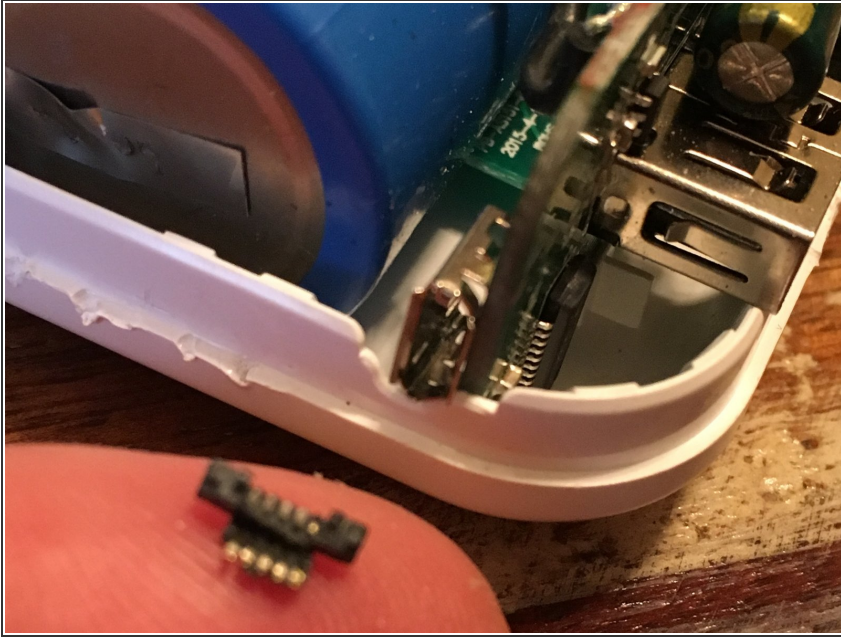
## Step 8 — Number Display



- Here's the LED number display. Note that I've briefly pushed the small button on the right side and the display shows zero charge.



## Step 9 — The Culprit



- This is why I was unable to charge the iMuto charger... The small five-contact metal connector (on my finger tip) that is internal to the micro USB port (on the left side of the main circuit board, just above my finger tip) had broken off and fell inside the iMuto charger.

## Step 10 — Conclusion, For Now.



- This could be repaired by soldering a new micro USB connector port to the main circuit board, but it won't look pretty after reassembly!