



# Duracell CEF14N NiMH Battery Charger - Not charging

Charger will not charge. Two battery test methods eliminated battery as issue. Reader then stepped through disassembly to replace capacitor C5.

Written By: David Greene



## INTRODUCTION

**CAUTION: AC VOLTAGES.** Discharge capacitor before removing, if possible. If not, please leave device unplugged for two to three days before attempting repair. Capacitors can give you a nasty and/or dangerous shock.



### TOOLS:

- [Phillips #0 Screwdriver](#) (1)



### PARTS:

- [25V Rubycon Capacitor](#) (1)

## Step 1 — Remove two screws on top rear of case. Remove two screws on bottom rear of case.



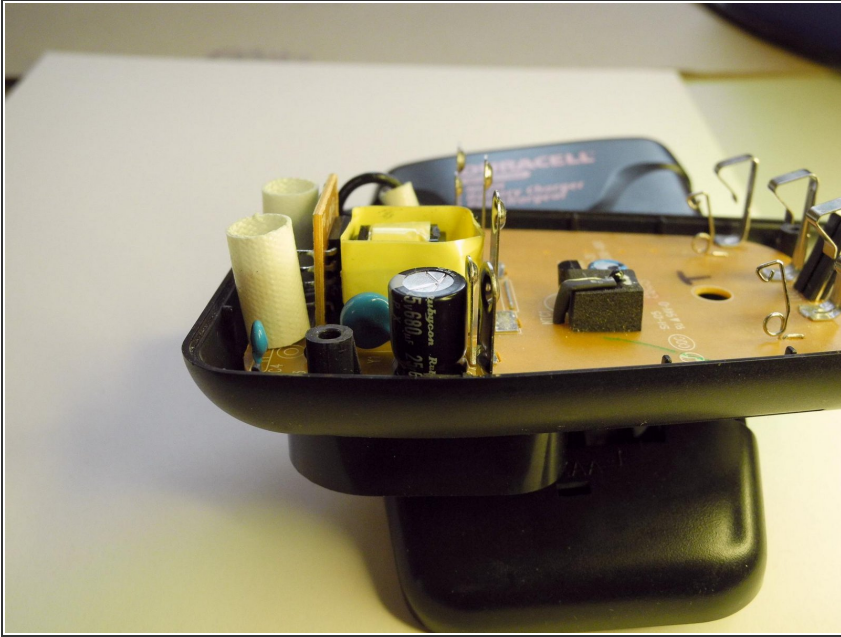
- Use a small screwdriver to remove the four screws on the rear corners of the case.

## Step 2 — Gently separate front and rear of case.



- Use your hands to gently pry apart the front and rear halves of the case.
- ☑ Be very careful as to not tear or strain the wiring inside the white sleeve (as shown in picture).

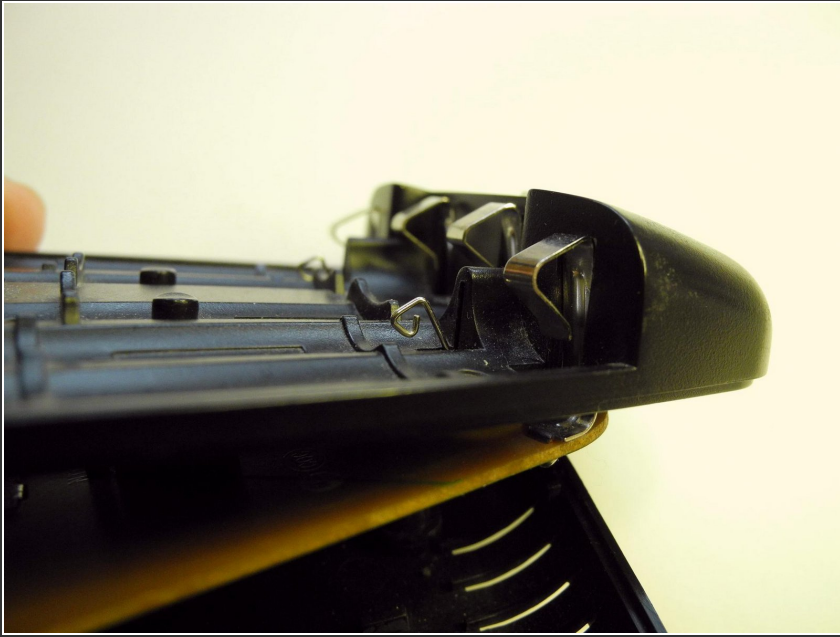
### Step 3 — On beige side of board, check capacitor C5



- Desolder the defective C5 Capacitor (a black, 680uF 20V radial model).
  - ★ If the unit has not been unplugged for three days, you will need to discharge the capacitor with a suitable resistor.
- Replace the resistor with a similar value cap, such as a 25V Rubycon.

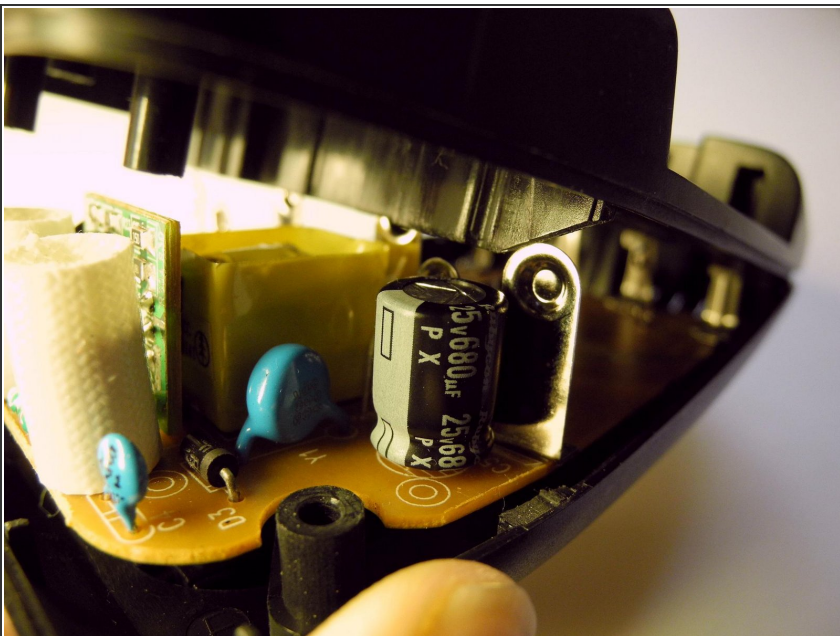


## Step 4



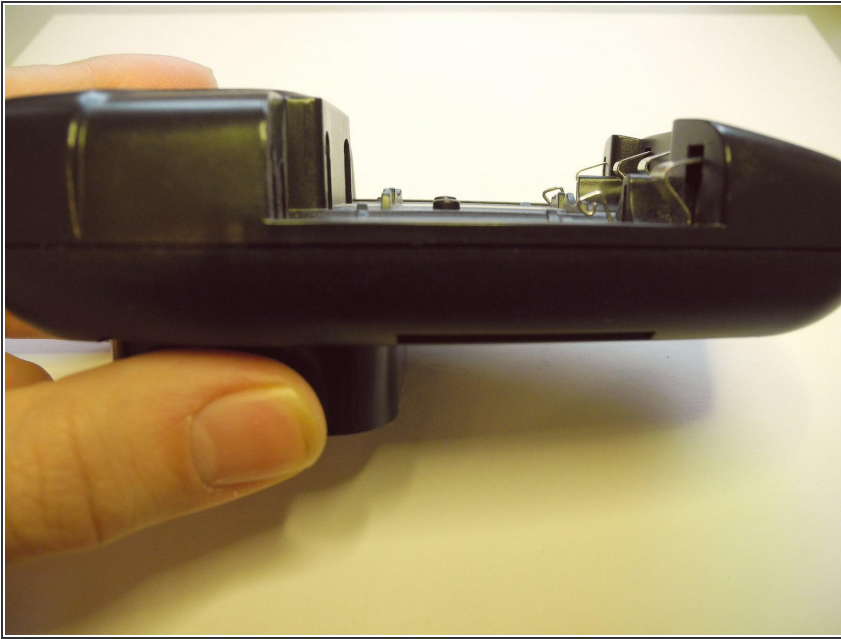
- Insert the PCB through the front half of the case, making sure that the LED and battery contacts come out fully on the other side of the case (as seen in photo).

## Step 5



- Slowly and carefully push the front half of the case down onto the PCB and bottom half of the case.
- ☑ Make sure the plastic tab at the front of the case near the battery contact comes down in front of the metal terminal. You may have to adjust the front of the case to get it to close snugly.

## Step 6



- Verify that the plastic tab inside the front of the case has cleared the metal terminal on the PCB. The front and rear of the case should now join seamlessly together.
- Finish the reassembly by tightening all four screws onto the back of the case.
- ⓘ Test the charger by inserting two new, compatible batteries into symmetrical slots and watching the LED status. RED=Battery charging GREEN=Finished charging, RED FLASHING=Battery or charger problem