



Alcatel One Touch Evolve 2 LCD Screen Replacement

This guide will provide the necessary steps to replace the LCD screen from the Alcatel OneTouch Evolve 2.

Written By: Akira Nakaza



INTRODUCTION

This guide will provide the necessary steps to replace the LCD screen from the Alcatel OneTouch Evolve 2.



TOOLS:


- [iFixit Pro Tech Toolkit](#) (1)
- [iFixit Opening Tools](#) (1)
- [JIS Driver Set](#) (1)


J000

- [Metal Spudger](#) (1)
-

Step 1 — Back Frame



 Turn off the phone before proceeding with disassembly to prevent shock and potential shorting of any electrical components.

- Remove the back cover using one of the plastic opening tools and the slit in one of the corners.
-  Be gentle when prying so as to not wear out the tool.

Step 2



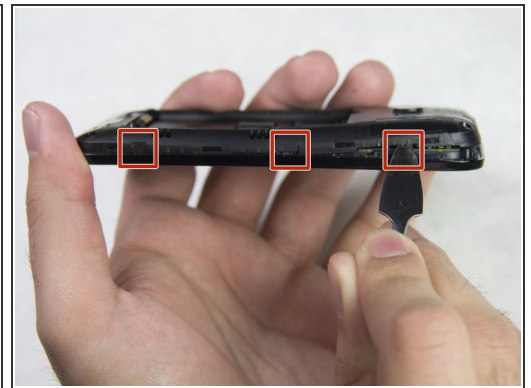
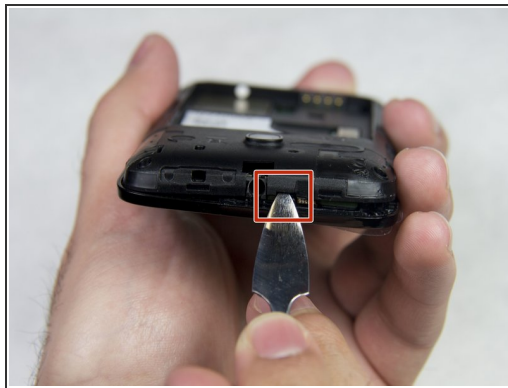
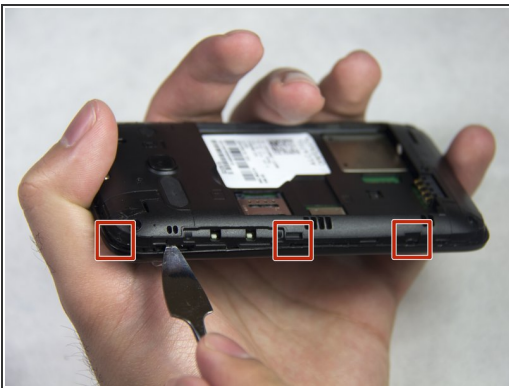
- Remove the battery using one of the plastic opening tools and the dome-shaped indent next to the battery face.

Step 3



- Unscrew the four 4mm JIS screws in each corner using the J000 screwdriver head. Turn the screws counter-clockwise to loosen.

Step 4



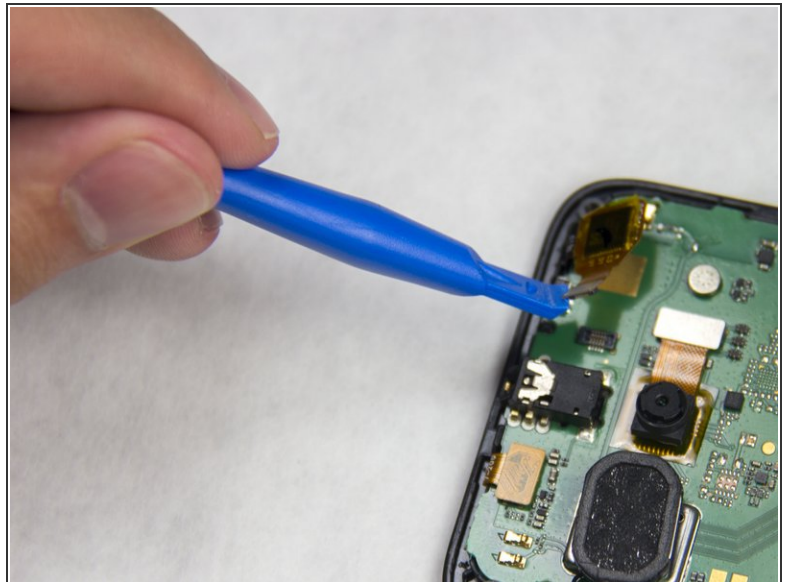
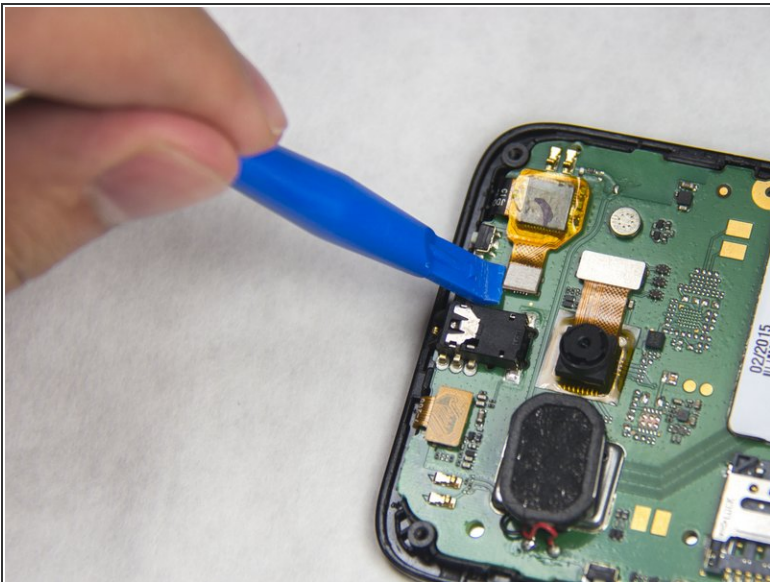
- Insert a plastic or metal spudger between the front cover and rear frame in one of the areas indicated by the red squares and gently pry the rear frame loose. Repeat the process all the way around the phone until the rear frame comes loose.

Step 5



- Pull the rear frame off with your hands.

Step 6 — Main Circuit Board



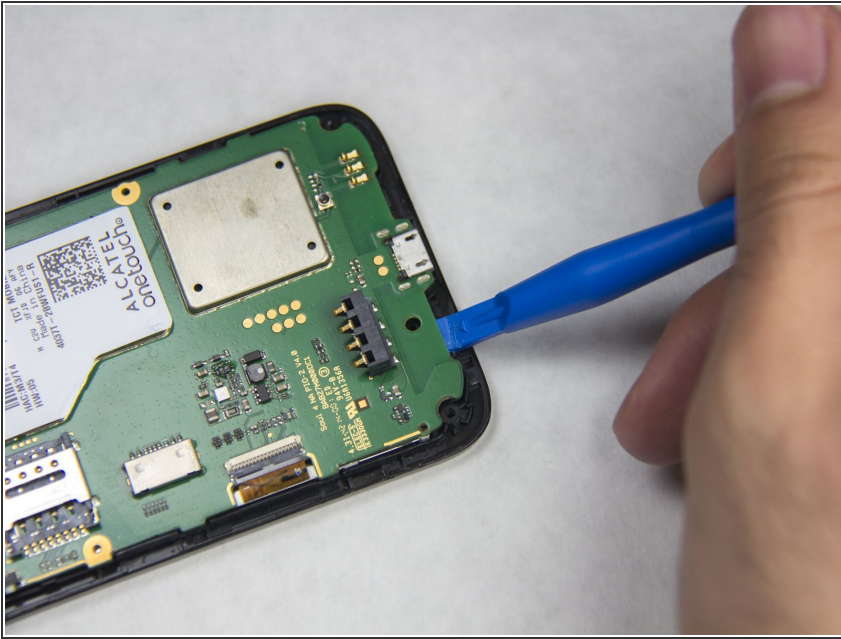
- Use a plastic opening tool to pop the speaker [press-fit connector](#) free.
- Slide the edge of the tool under the connector and gently lift up on the edge; the connector should pop free with little force.

Step 7



- Use a plastic opening tool to lift the front camera press-fit connector free.

Step 8



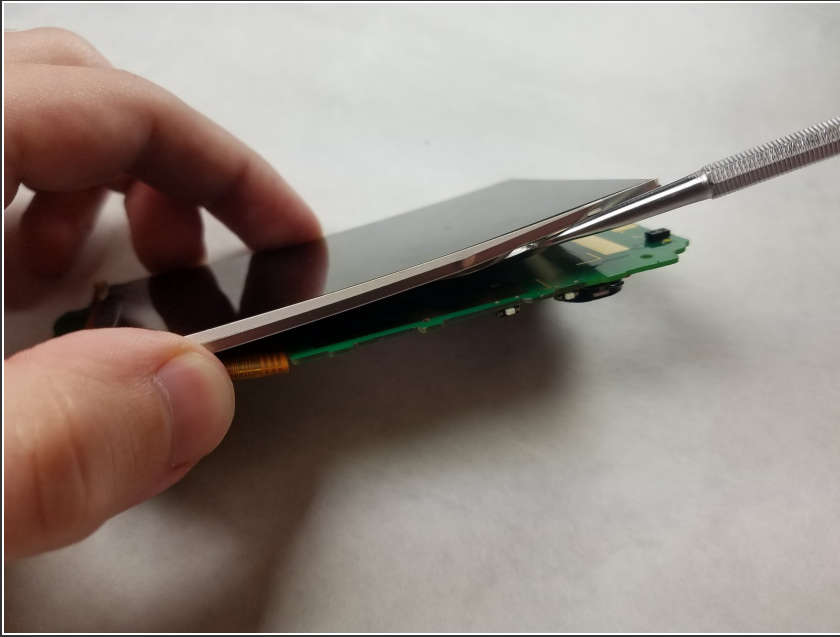
- Insert one of the plastic opening tools into any side of the main circuit board and gently pry it loose from the front cover. Repeat the process all around the circuit board.

Step 9



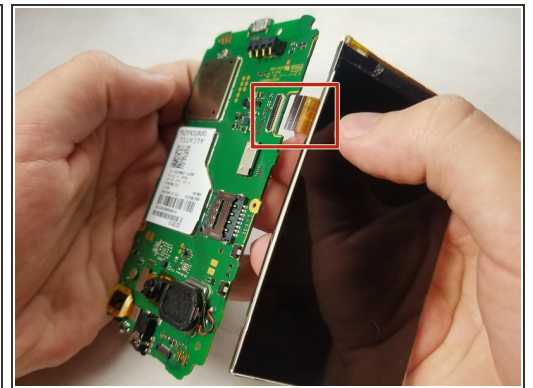
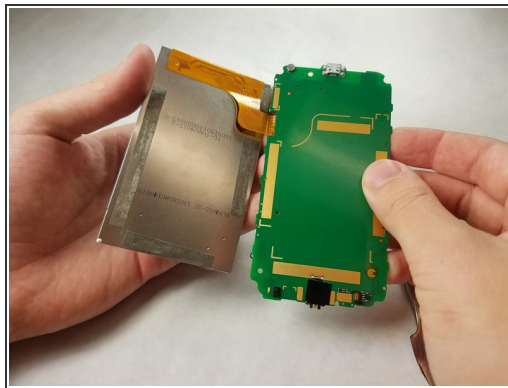
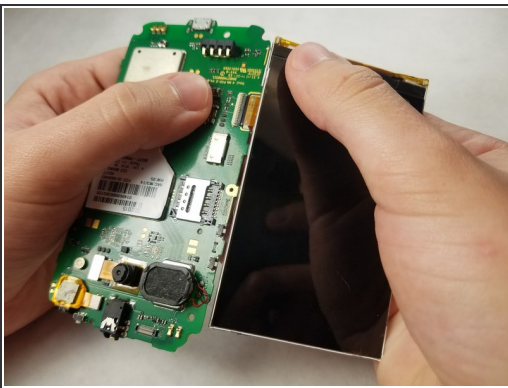
- Detach the main circuit board from the front cover.

Step 10 — LCD Screen



- Gently pry off the digitizer from the main circuit board using a spudger

Step 11



- Carefully separate the digitizer from circuit board.
- Using your hands, gently remove the ribbon connecting the digitizer to the circuit board.

To reassemble your device, follow these instructions in reverse order.