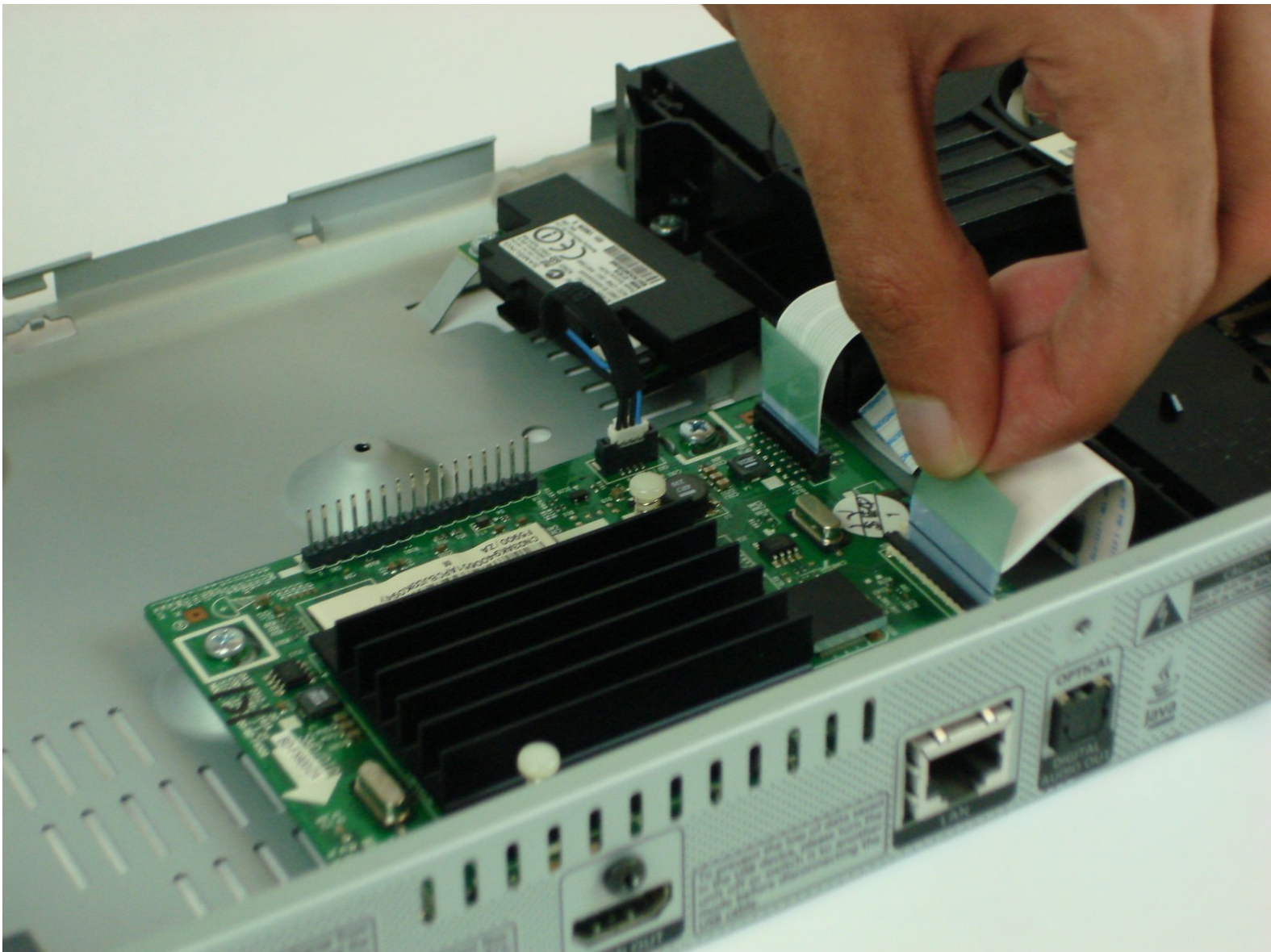




Samsung BD-F5900 Main Logic Board Replacement

This guide helps explain how to replace the Main Logic Board on the Samsung BD-F5900 Blu-ray player

Written By: Louis McKean



This document was generated on 2020-11-27 01:42:02 PM (MST).

INTRODUCTION

In the event of a catastrophic failure on your Blu-ray player, the Main Logic Board may have failed. This guide is for replacing a damaged or broken Main Logic Board. The only tool required is a #1 Phillips head screwdriver.



TOOLS:

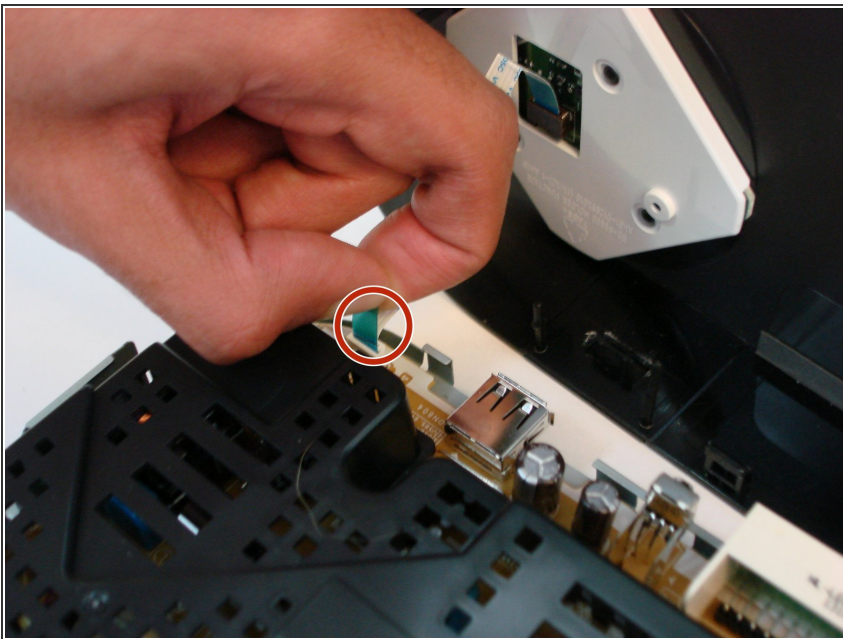
- [Phillips #1 Screwdriver](#) (1)
-

Step 1 — Top Cover



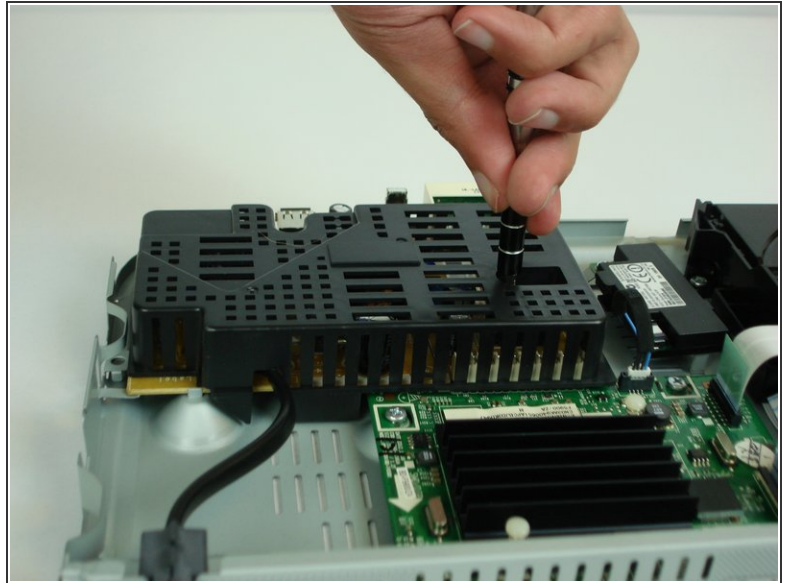
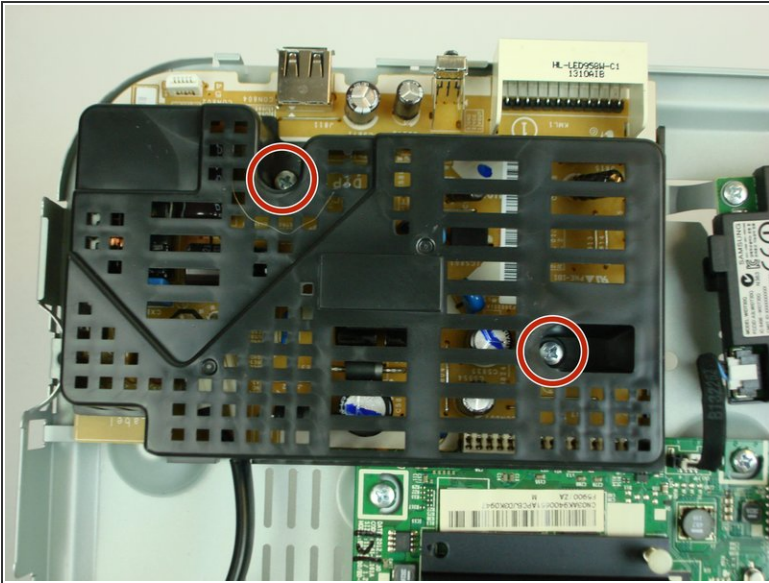
- Using a #1 Phillips head screwdriver, remove the three 10mm screws on the back panel.
- Tilt the back of the top cover forward to remove from chassis.

Step 2



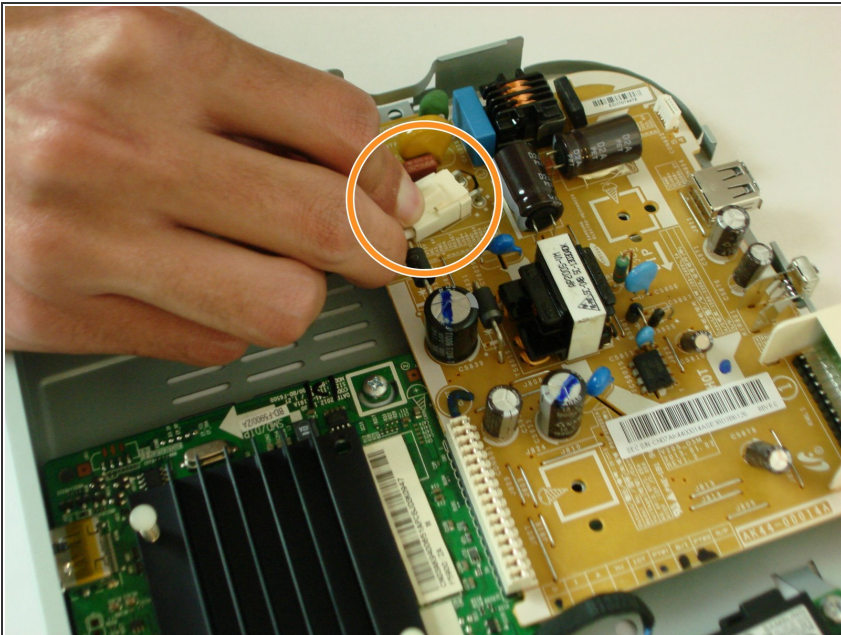
- Gently pull up on the ribbon cable by the blue tab to remove it from the power supply board.

Step 3 — Power Supply



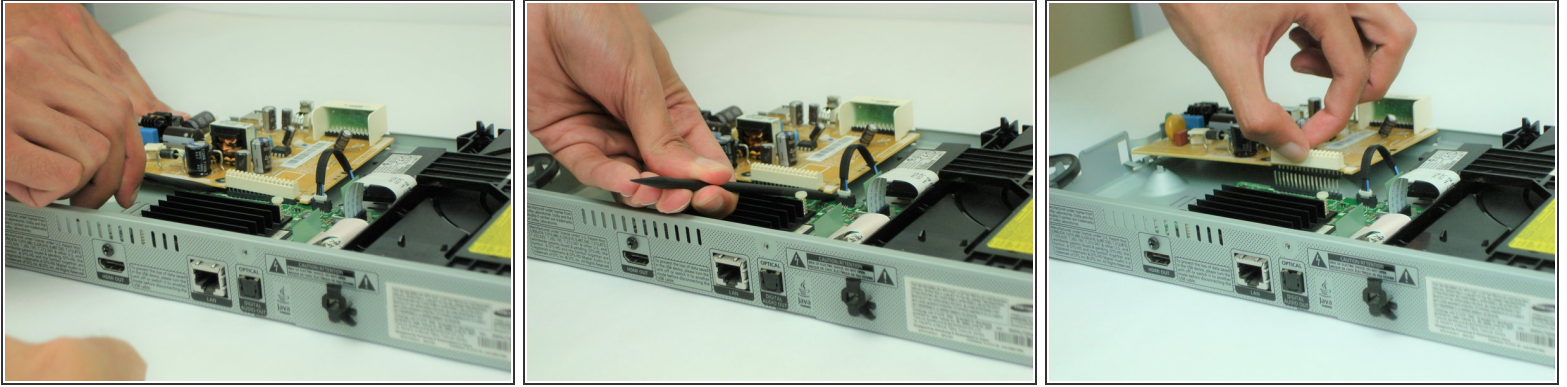
- Using a #1 Phillips head screwdriver, remove the two 7.5mm screws on top of the plastic cover and remove the cover.

Step 4



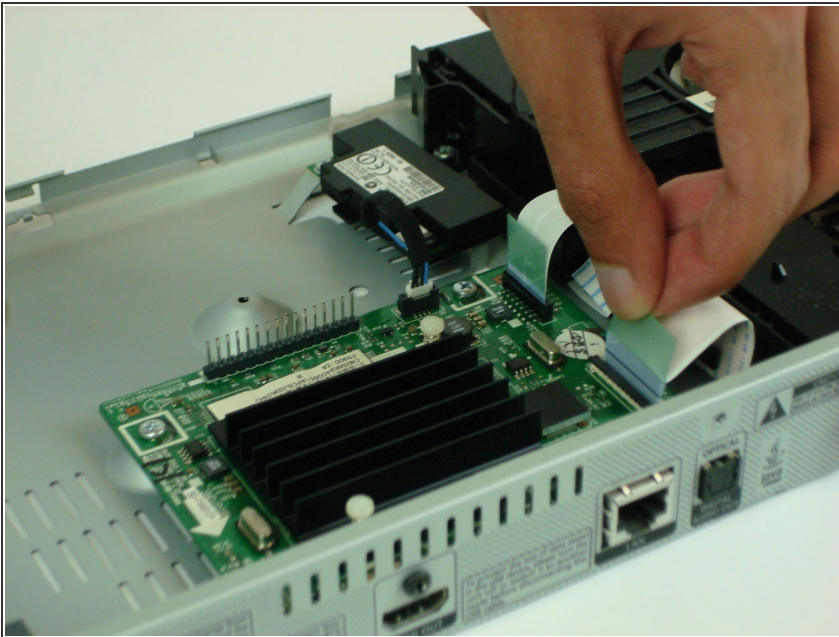
- Press down on the plastic retaining clip and pull backwards to remove the AC power connector from the power supply board.

Step 5



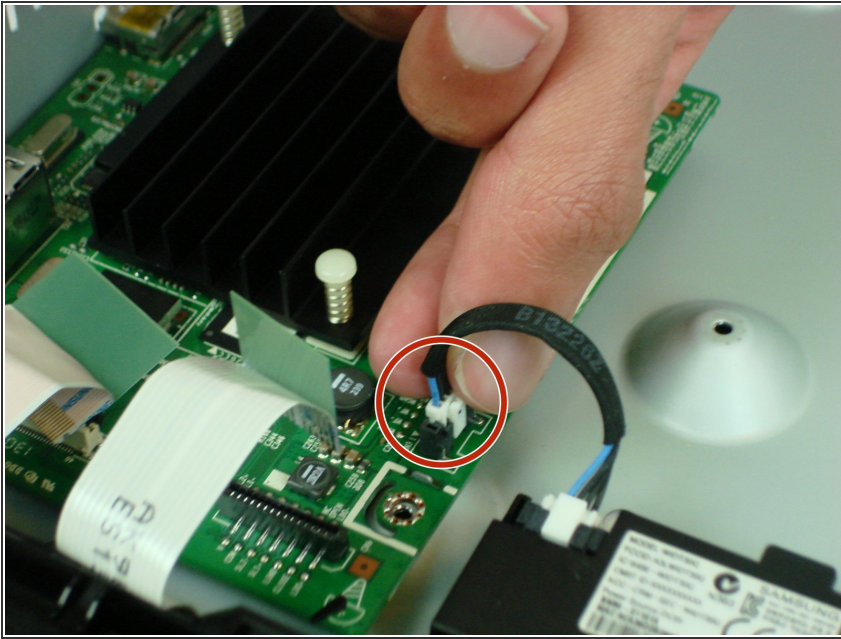
- Using the plastic spudger tool, gently pry on either side of main power connector (CON801) to disconnect from main logic board.
- ⓘ Pry a little bit on each side of board until the board lifts away.
- Tilt the board forward and lift up to remove from the chassis.

Step 6 — Main Logic Board



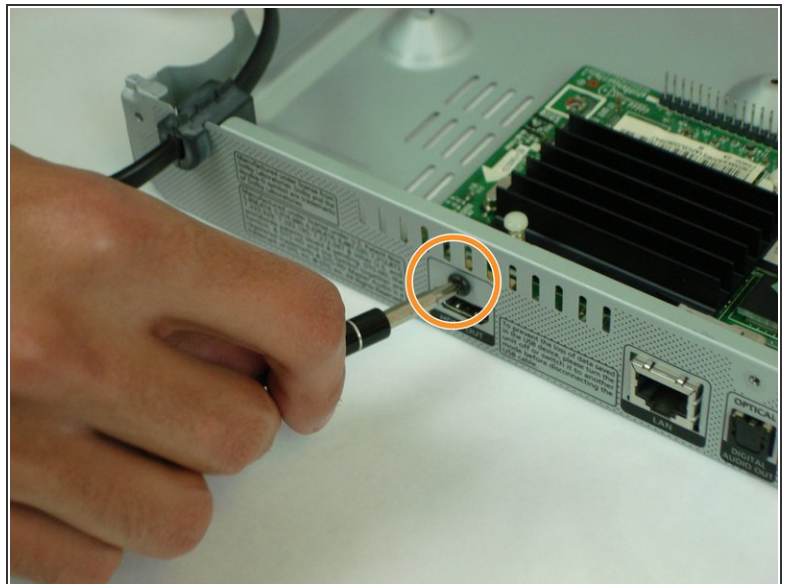
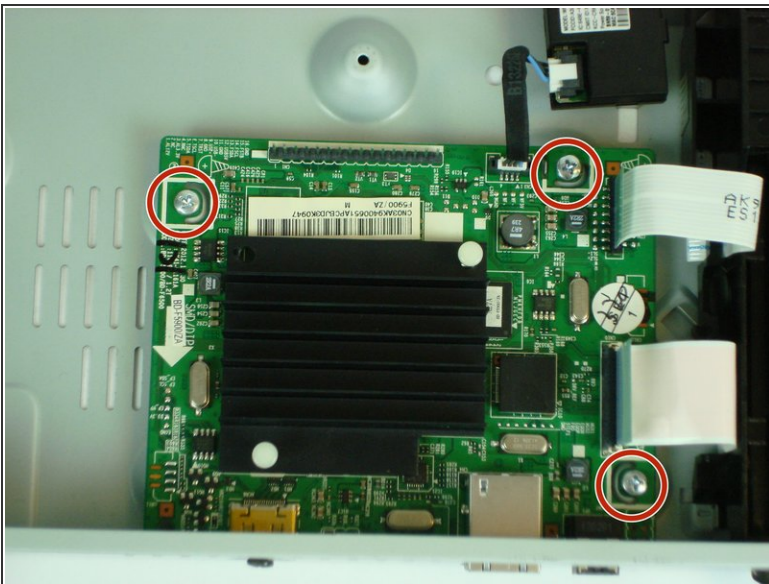
- Remove the two ribbon cables from the Main Logic Board assembly by gently pulling up on the blue tab.
- ⚠ Be careful not to damage the ribbon cable by using too much force.

Step 7



- Disconnect the WiFi board cable connector

Step 8



- Using a #1 Phillips head screwdriver, remove the three 7.5 mm screws from the board
- Also remove the 10 mm screw from the rear panel.
- Remove the Main Logic Board

To reassemble your device, follow these instructions in reverse order.