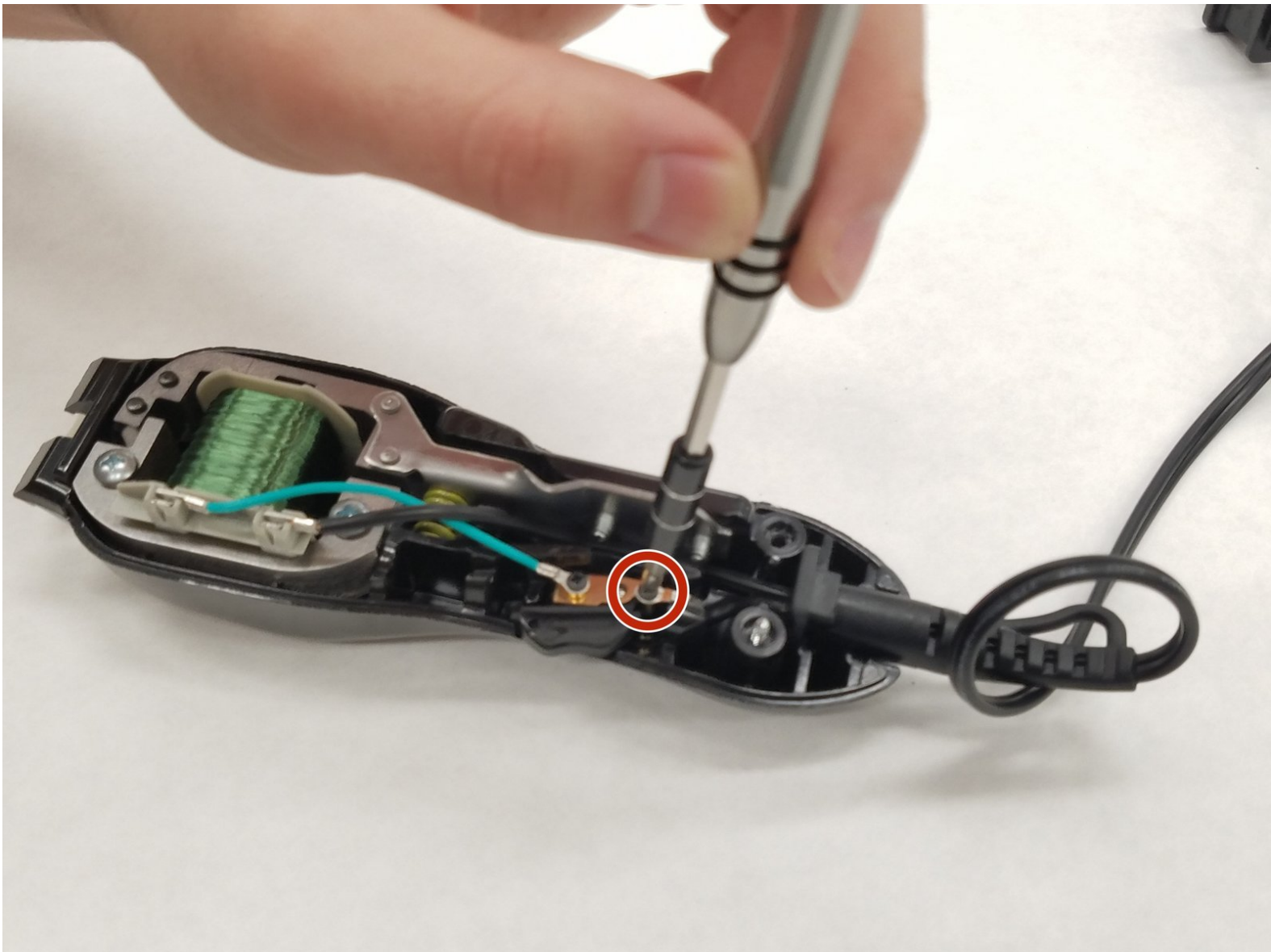




# Wahl Chrome Pro Power Cord Replacement

This guide will provide instructions on how to replace the power cord from Wahl Chrome Pro.

Written By: Manuel Salazar M.



## INTRODUCTION

The power cord connects the clipper to a power supply. If the power cord wiring breaks due to repeated bending, the power cord may need replacement. Replacing a broken power cord makes sure the clippers receive the power needed to run the device.



### TOOLS:

- [Phillips #2 Screwdriver](#) (1)
  - [Spudger](#) (1)
  - [Tweezers](#) (1)
  - [Phillips #1 Screwdriver](#) (1)
-

## Step 1 — Case



- Remove the two 5.0 mm JIS #1 screws to loosen the cutting blades.
- ⚠ Make sure your device is not connected to power before you begin.

## Step 2



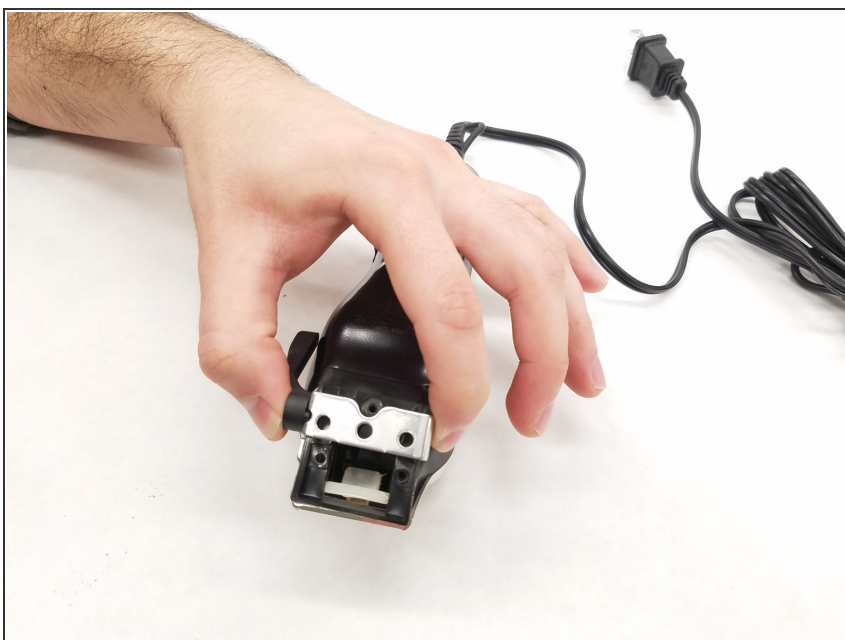
- Lift the bottom blade straight up from the device body to remove it.

### Step 3



- Remove the three 9.0 mm JIS #1 screws attaching the base of the blade assembly to the body.

### Step 4



- Lift the base of blade assembly straight up off of the body.

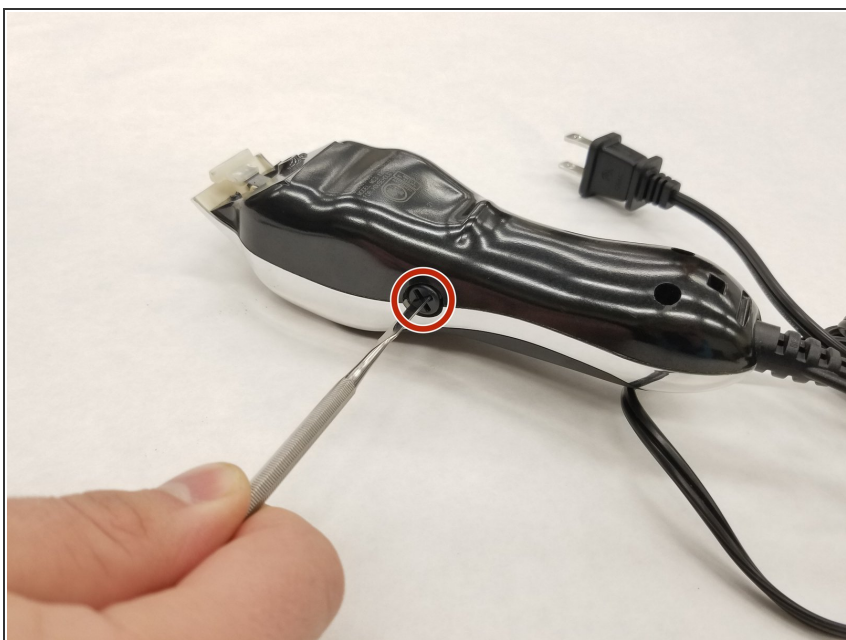


## Step 5



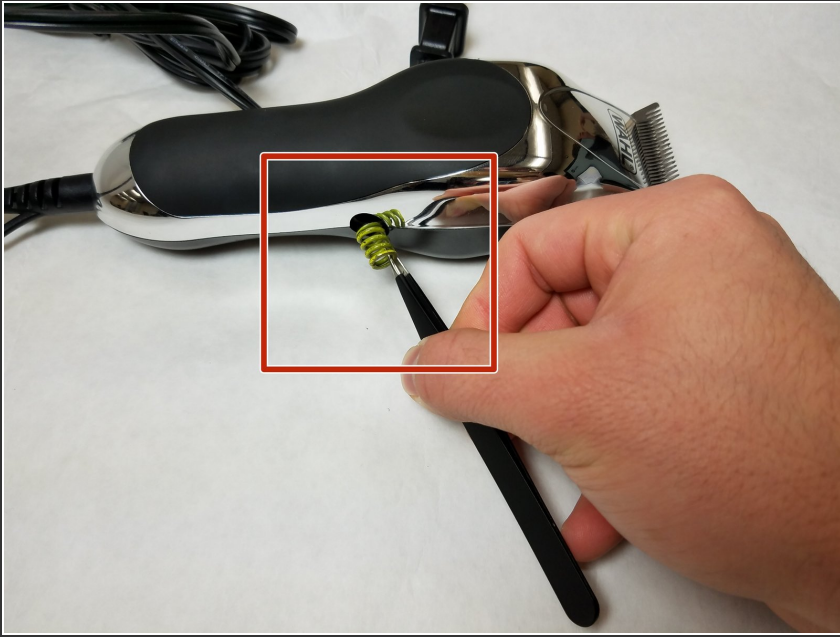
- Remove the two 12.0 mm JIS #1 screws on the back of the device body.

## Step 6



- Remove the 13.0 mm Phillips #2 screw on the side of the device body.
- This screw is located on the opposite side of the body from the switch.

## Step 7



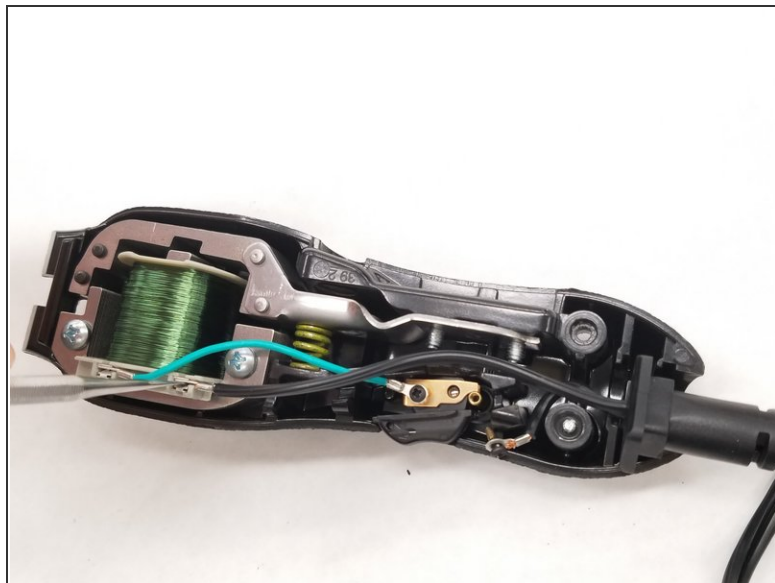
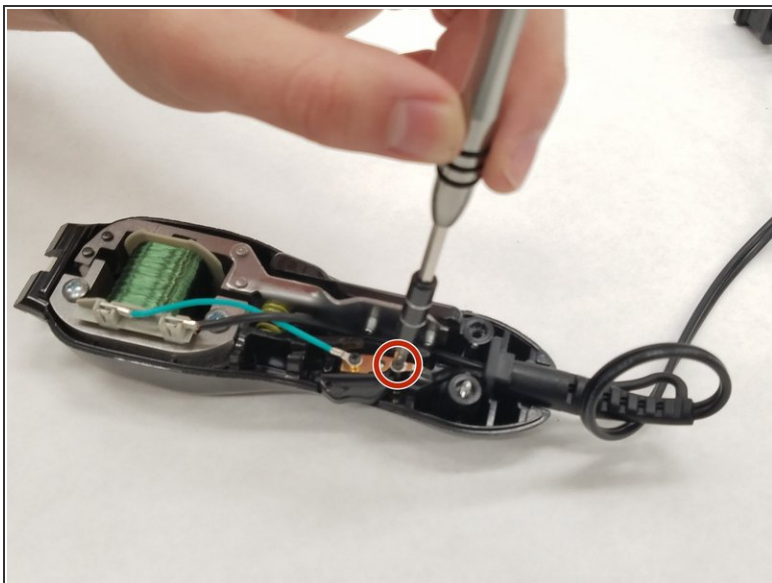
- Remove the spring on the side of the body using tweezers.

## Step 8



- Pry the body case off of the device using a spudger.

## Step 9 — Power Cord



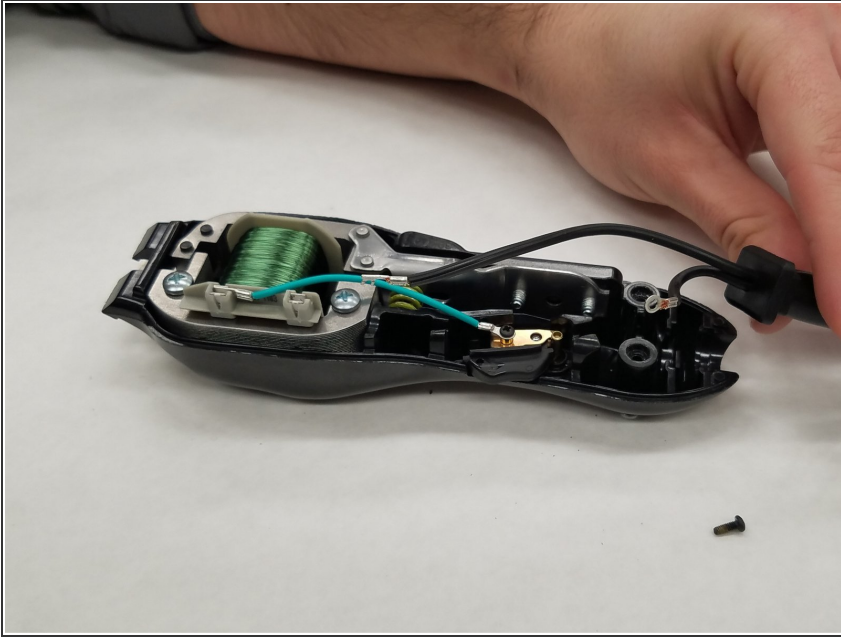
- Remove one 7.5 mm JIS #1 screw from the switch base.

## Step 10



- Unplug the cord terminal from the motor connector.

## Step 11



- Remove the cord from the device base by pulling gently.

To reassemble your device, follow these instructions in reverse order.