



# Dell Inspiron 15-7559 Battery Replacement

Battery replacement guide for the Dell Inspiron 15-7559.

Written By: Trenton Greevebiester



## INTRODUCTION

This guide will demonstrate how to replace the battery for the Dell Inspiron 15-7559. This may be necessary if you have issues charging or turning on the device.

**For your safety, discharge your battery below 25% before disassembling your device.** This reduces the risk of a dangerous thermal event if the battery is accidentally damaged during the repair. If your battery is swollen, [take appropriate precautions](#).



### TOOLS:

- [iFixit Opening Tool](#) (1)
- [Phillips #1 Screwdriver](#) (1)
- [TR8 Torx Security Screwdriver](#) (1)



### PARTS:

- [Dell Inspiron 15 357F9 Battery](#) (1)

## Step 1 — Back Panel



- Turn off the computer.
- Disconnect the charging cable from the computer.
- ⚠ Failure to turn off the device and disconnect the cable could lead to personal injury or device damage.
- Flip the computer upside down.

## Step 2



- Remove the captive screw located on the top section of the back panel, using a Philips #1 screwdriver.
- ⓘ Keep in mind that the screw cannot be fully removed from the panel, even when fully loosened.



### Step 3



- Use the blue, plastic opening tool to gently pry a section of the back panel open.
- Next slide the opening tool around the back panel to disconnect the clips holding the panel in place.
- After the clips have been disconnected, the back panel can then be easily lifted off the computer.

### Step 4 — Battery



- Locate the battery on the bottom left side of the laptop.

## Step 5



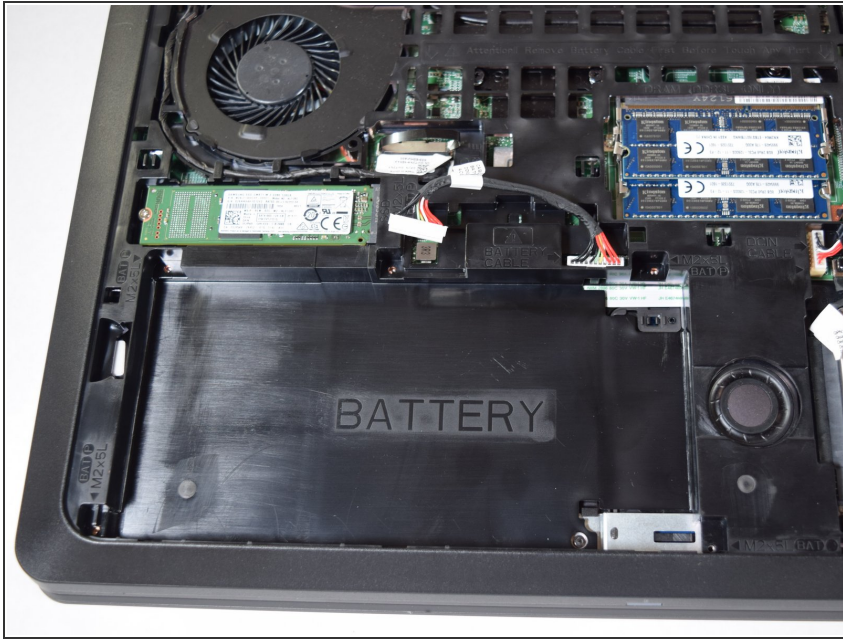
- Unscrew the 5 x 2mm x 5mm screws, using the T8 Torx screwdriver.

## Step 6



- Using the tab above the battery, raise the battery far enough to disconnect the cables attached to it.
- Using your hand grab the white portion connecting the cables to the battery and disconnect it.  
**⚠ Do not pull on the cables directly. This would risk damaging them or tearing them from the device.**

## Step 7



- Now lift the battery from the device to remove it.

To reassemble your device, follow these instructions in reverse order.

Take your e-waste to an [R2 or e-Stewards certified recycler](#).

Repair didn't go as planned? Try some [basic troubleshooting](#), or ask our [Answers community](#) for help.