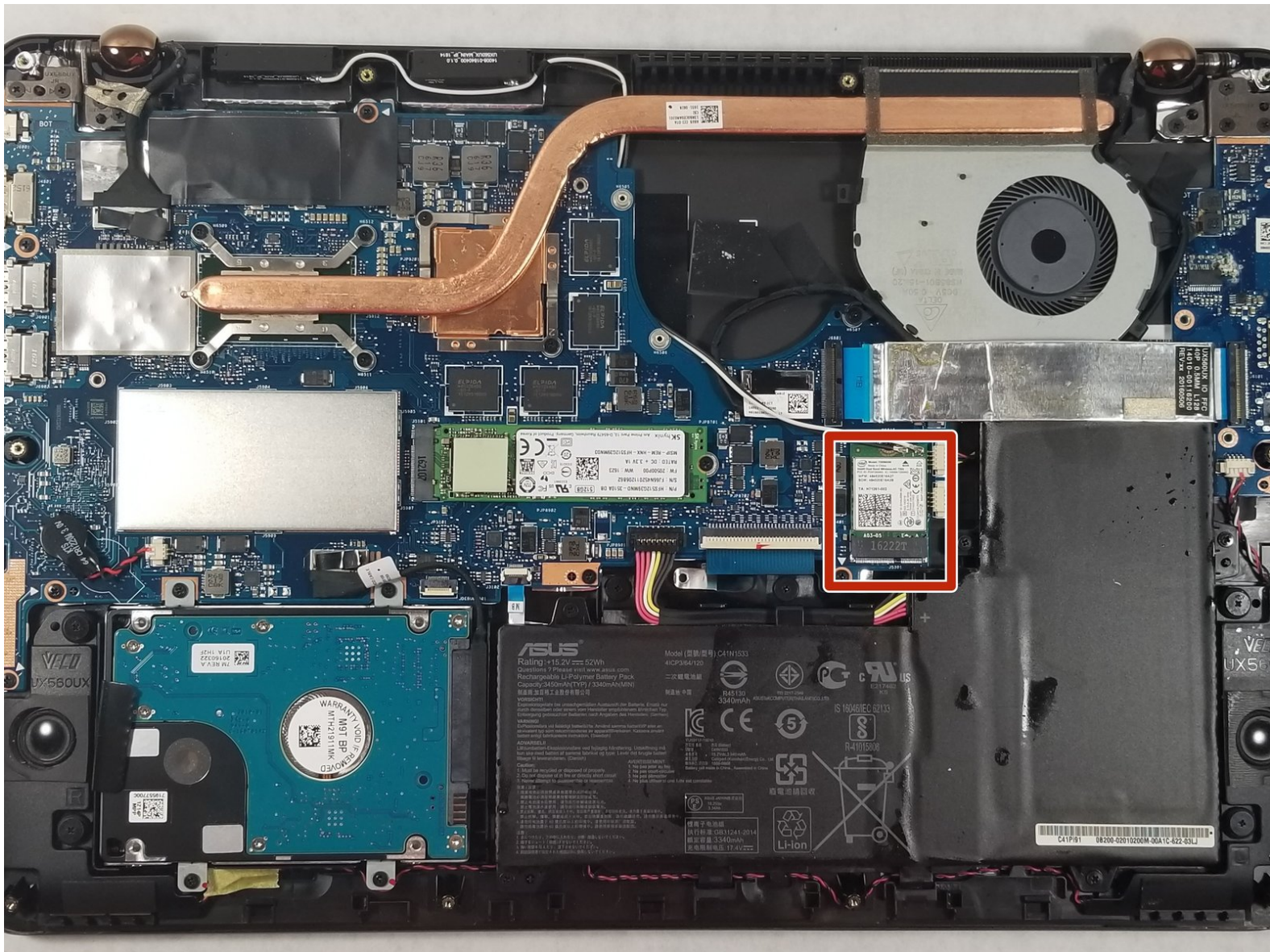




Asus Q534U Wi-fi card Replacement

This guide will take you through the steps needed to replace a damaged Wi-Fi card

Written By: Eric Okoko



INTRODUCTION

If your Asus laptop (Q534U) is having problems connecting to WiFi, then the solution may be as simple as switching out a faulty WiFi card. First, be sure to eliminate all the possible errors with the laptop. Once the problem has been narrowed down to the WiFi card, use this guide to walk you through the steps of changing the WiFi card. This fix should not take more than 20 minutes, and only requires removal of parts.

It does require removing the battery, so use caution as a punctured battery can cause a dangerous fire.



TOOLS:

- [iFixit Opening Tool](#) (1)
 - [Phillips #00 Screwdriver](#) (1)
 - [T5 Torx Screwdriver](#) (1)
-

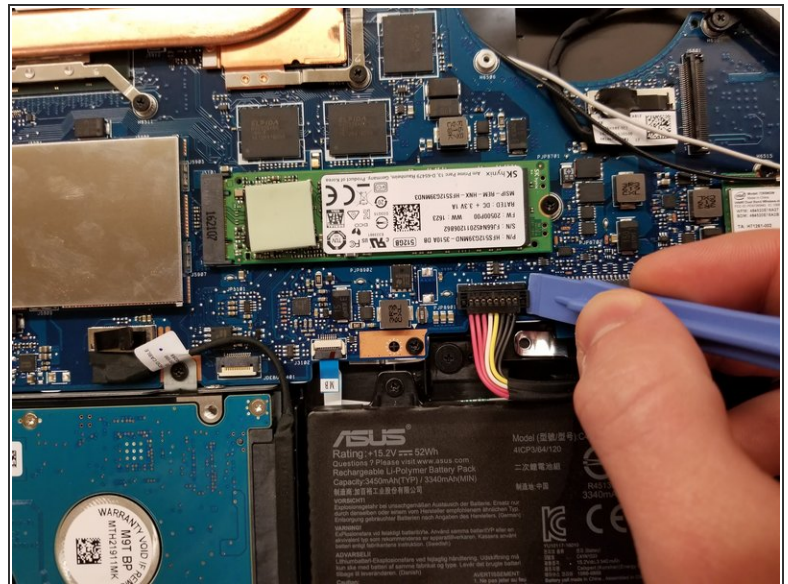
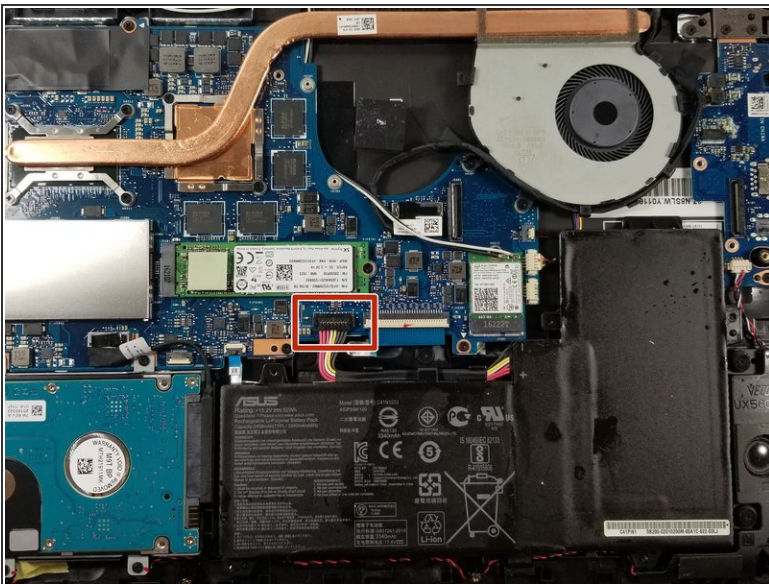
Step 1 — Back Case Removal



⚠ Make sure the device is turned off and unplugged from the charger.

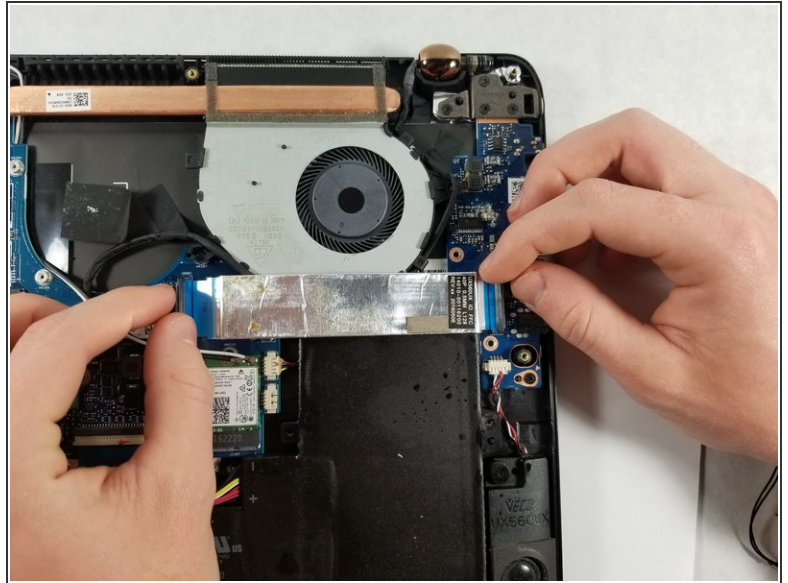
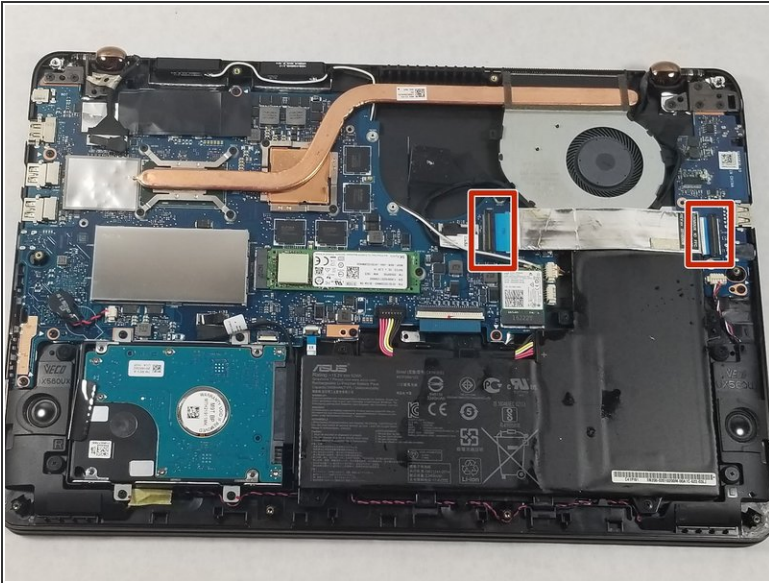
- Use a T5 screwdriver to remove all 10 screws that secure the bottom cover.
- Pull off the back cover of the laptop.
- ⓘ A pry tool may be needed to pull off the back cover.

Step 2



- Wedge an opening tool under the battery's bundled cable connector, and gently pry the connector up and to disconnect the battery.

Step 3



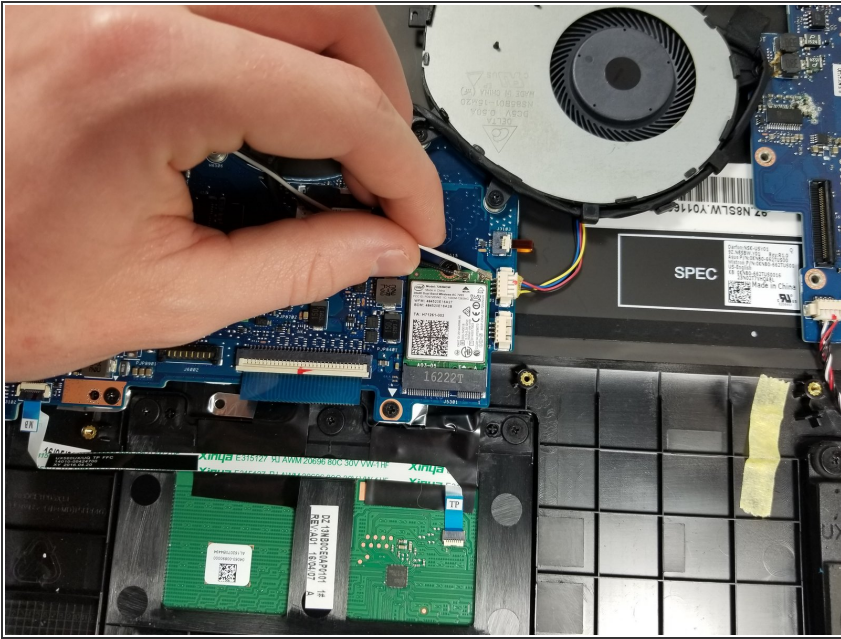
- Lift up the black tab next to the silver ribbon cable.
- Pull lightly on the blue tabs until the silver cable is free.

Step 4



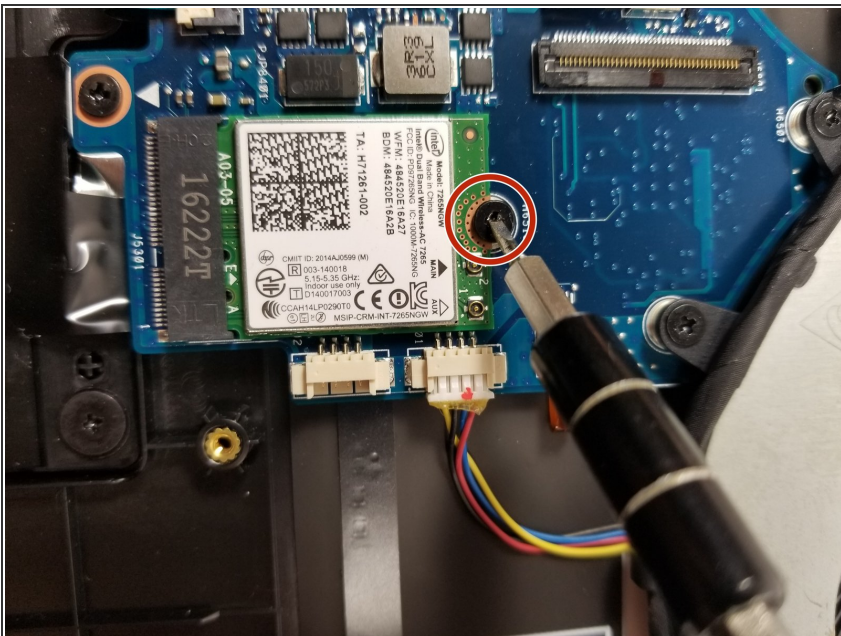
- Use a Phillips #00 screwdriver to remove the 5 marked screws.
 - Gently remove the battery.
- ⚠ Do not bend or puncture the laptop's lithium-polymer battery.

Step 5 — Wi-Fi card



- Disconnect the WiFi antenna cables by gently pulling them in an upwards motion.
- ❗ Needle nose pliers can be used as a detaching tool.

Step 6



- Using a Phillips #0 screwdriver, remove the screw holding the WiFi card down.
- Pull the WiFi card out of the socket toward the fan housing.

To reassemble your device, follow these instructions in reverse order.