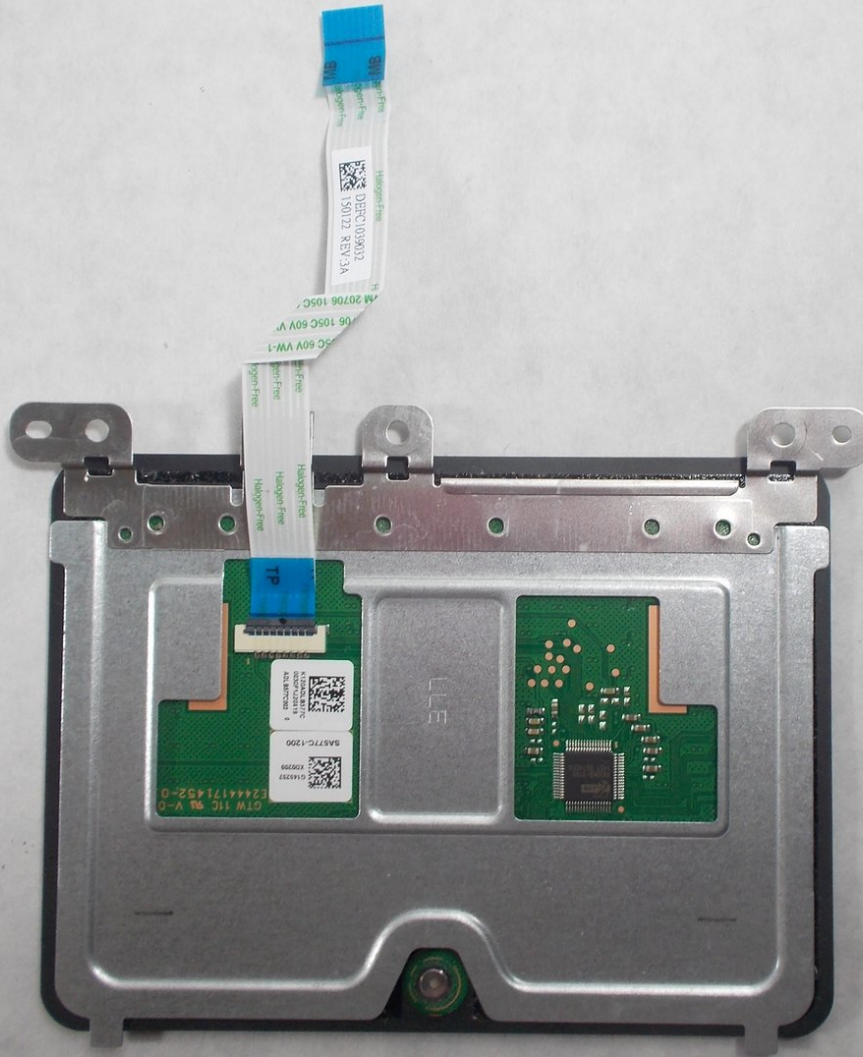




# Acer Chromebook 15 CB5-571-C09S Track Pad Replacement

Use this guide to replace the track pad in your Acer Chromebook 15 CB5-571-C09S.

Written By: Sakiynah Howard



---

## INTRODUCTION

This guide will walk you through replacing the track pad in your Acer Chromebook 15 CB5-571-C09S.



### TOOLS:

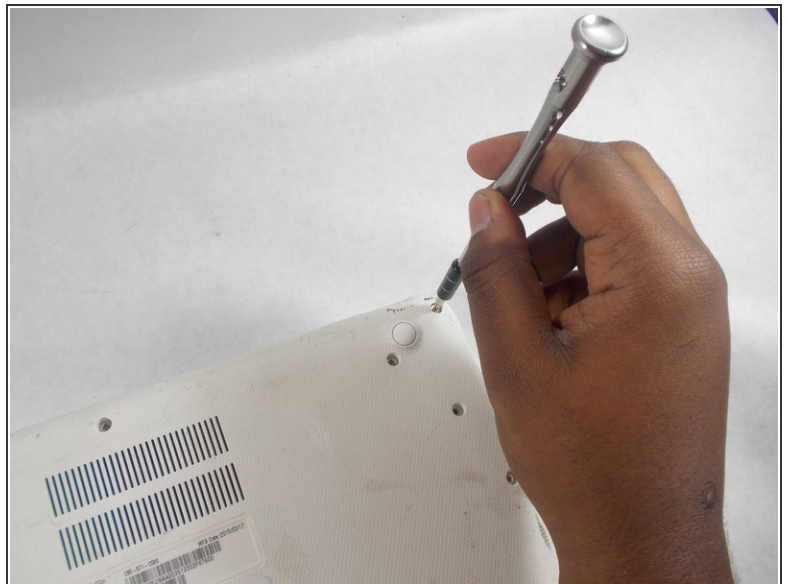
- [iFixit Opening Tools](#) (1)
  - [Phillips #0 Screwdriver](#) (1)
  - [Phillips #00 Screwdriver](#) (1)
-

## Step 1 — Back Cover



- Place the device on a flat surface faced down so that the fan vents are at the top of the device.

## Step 2




- Unscrew the eighteen 6 mm PH0 Phillips head screws from the back of the device.




### Step 3



- Use a plastic opening tool to pry open the back cover around the edges of the device.

 Be careful not to crack or break the back cover of the device.

 You will have to adjust the position of the device to pry it open along all the edges.

### Step 4



- Stand the device up with the hinges on top and carefully pull apart the back cover from the device.

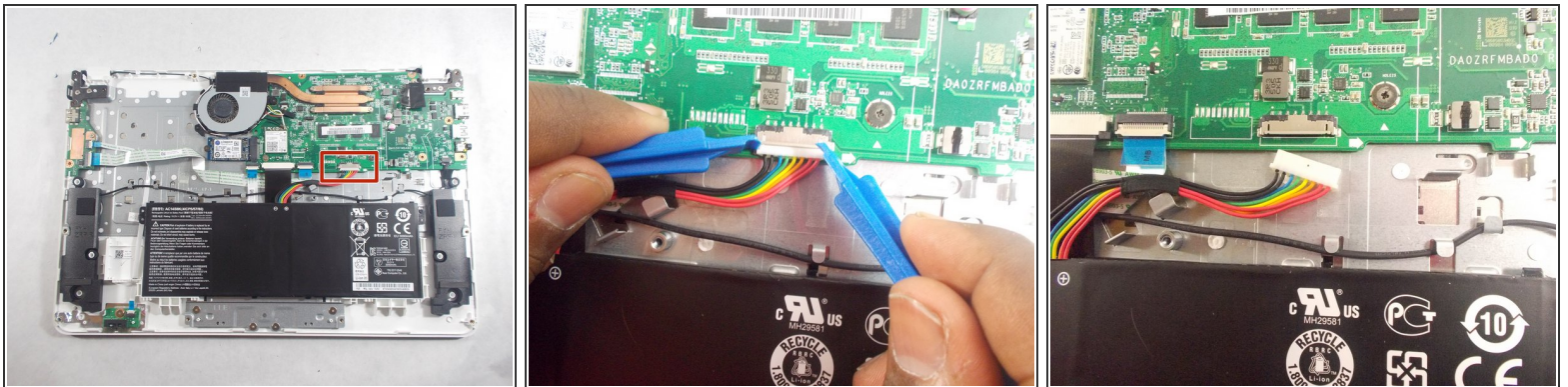
## Step 5 — Battery



**i** The battery is the large black rectangle located in the bottom center of the device.

- Unscrew the single black 5 mm PH00 Phillips head screw holding the battery in place located at the top right corner of the battery.

## Step 6



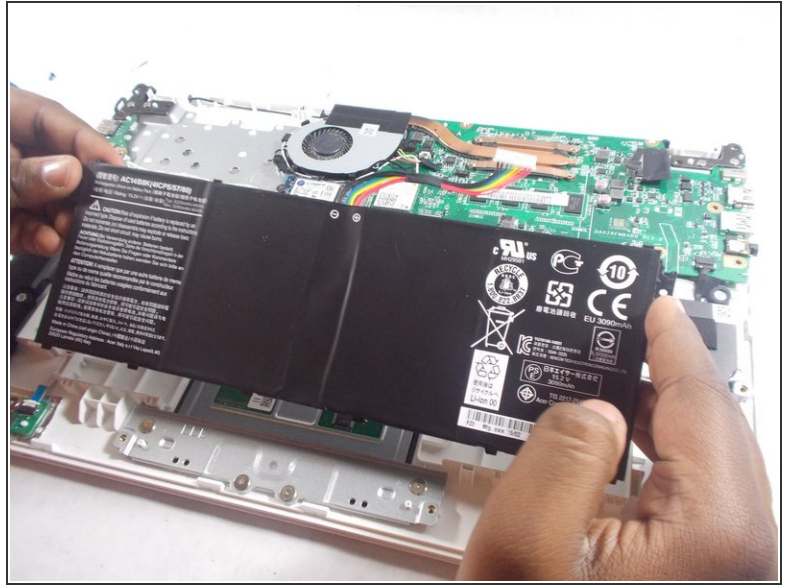
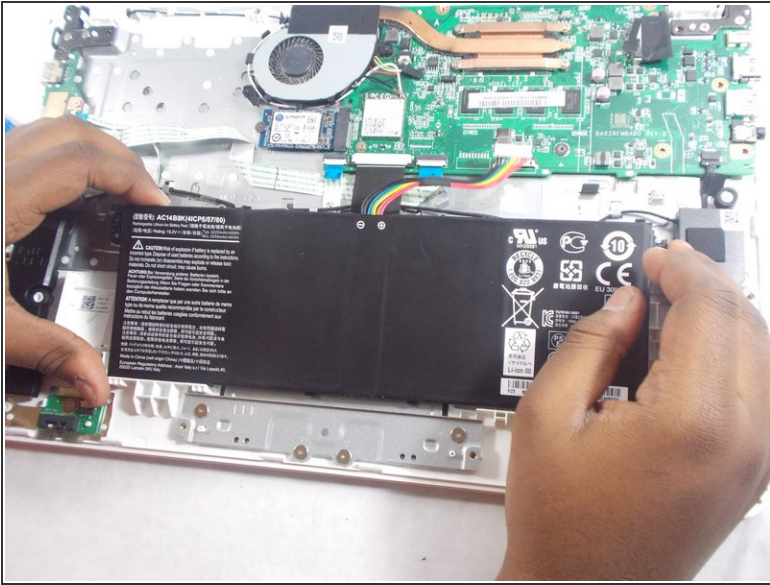
- Disconnect the battery connector from the motherboard using two plastic opening tools.

**i** The battery connector is the white "plug" that connects the battery to the motherboard with rainbow colored wires attached to it.

- Use two of the plastic opening tools on either edge of the battery connector and carefully pull out the battery connector out from the motherboard.

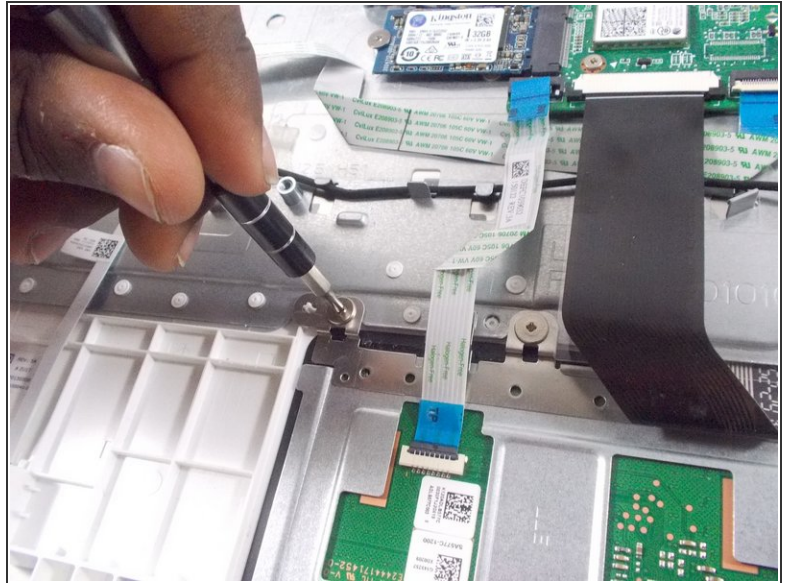
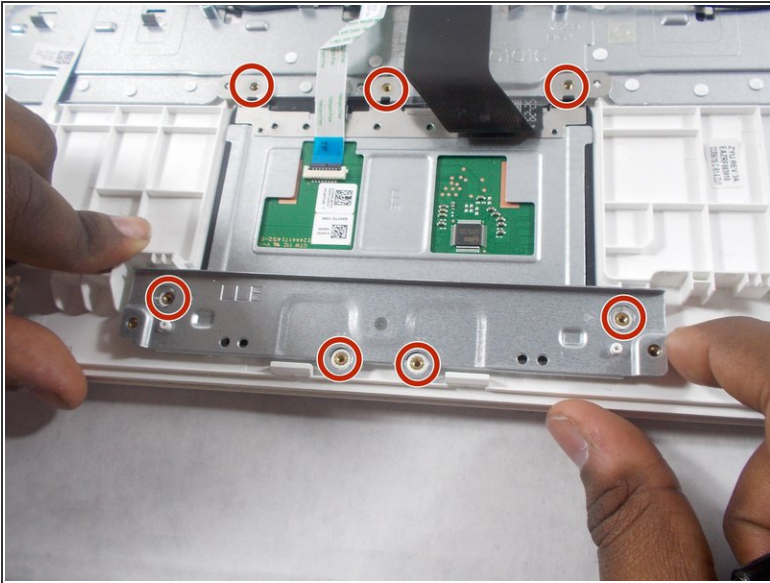


## Step 7



- Once the battery has been disconnected from the motherboard it can easily be removed from the device.
- Grab the top edge of the battery and carefully pull it up and out of the device towards you.

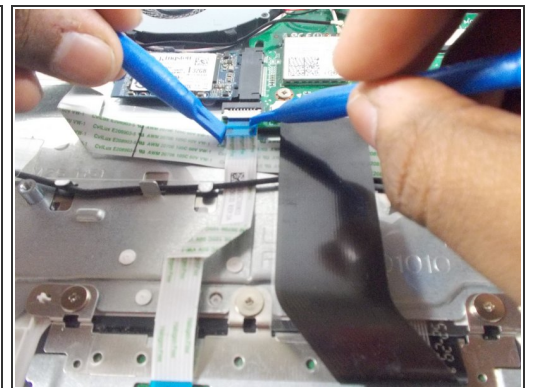
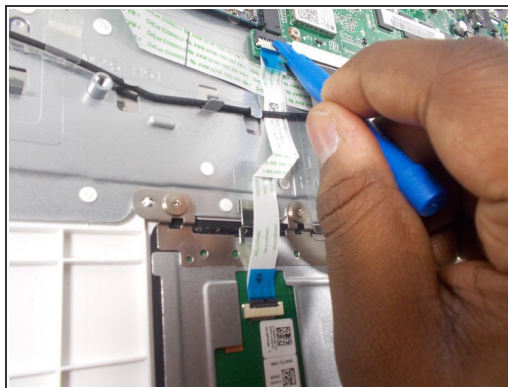
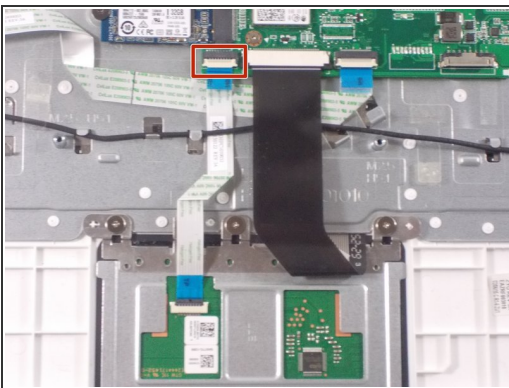
## Step 8 — Track Pad



**i** The track pad is located in the bottom center of the device where the battery used to be.

- Unscrew the seven 2 mm PH00 Phillips head screws.

## Step 9

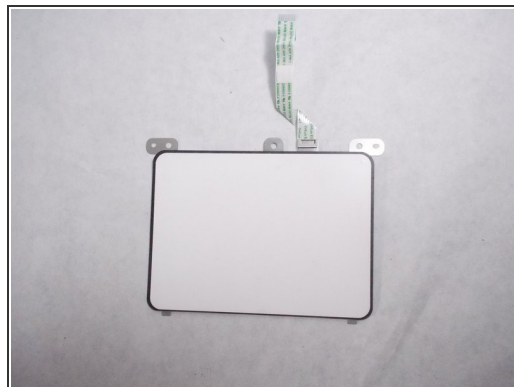
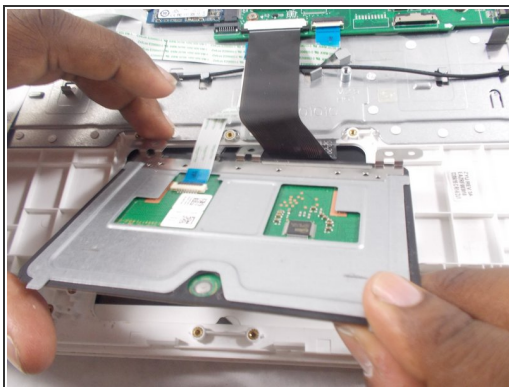


- Remove the track pad connector from the motherboard.

**i** The track pad connector is the white "plug" located at the bottom right corner of the motherboard with a blue and silver ribbon attached to it.

- Use two of the plastic opening tools to grab either side of the track pad connector and carefully pull it out from the motherboard.

## Step 10



- Grab the track pad from its corners and carefully pull it up and out of the device.

To reassemble your device, follow these instructions in reverse order.