



Acer Chromebook 15 CB5-571-C09S Screen Replacement

Use this guide to replace the screen of your Acer Chromebook 15 CB5-571-C09S.

Written By: Sakiynah Howard



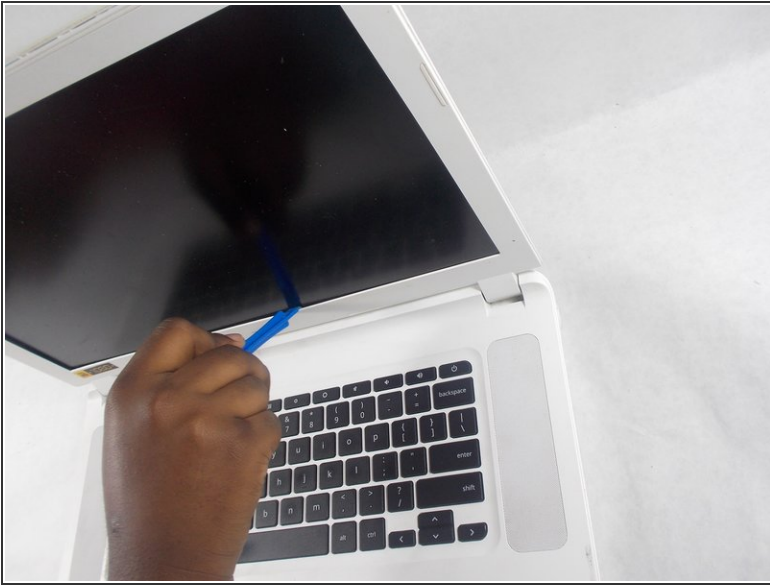
INTRODUCTION

This guide will walk you through replacing the screen of your Acer Chromebook 15 CB5-571-C09S.

TOOLS:

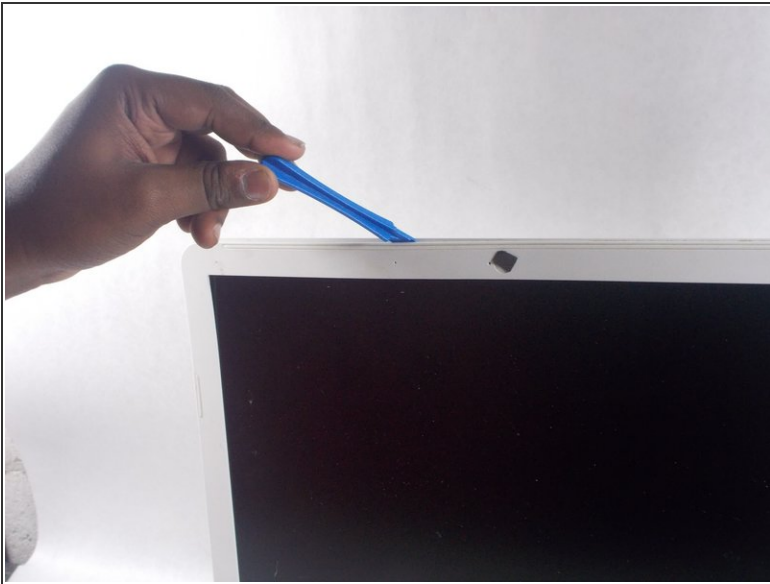
- [Phillips #00 Screwdriver](#) (1)
 - [iFixit Opening Tools](#) (1)
-

Step 1 — Screen



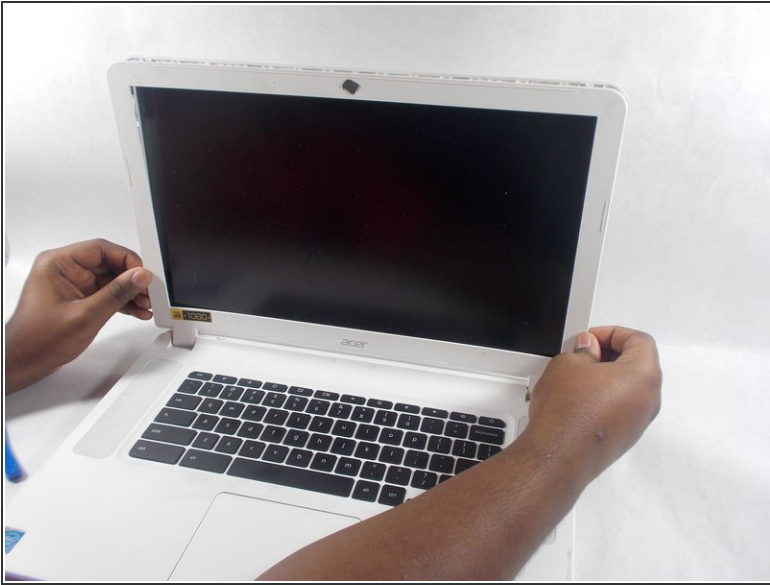
- Wedge one of the plastic opening tool in the inside of the screen cover and run it along the inside perimeter of the screen.

Step 2



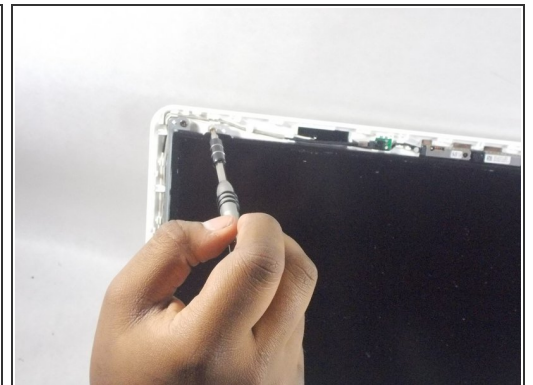
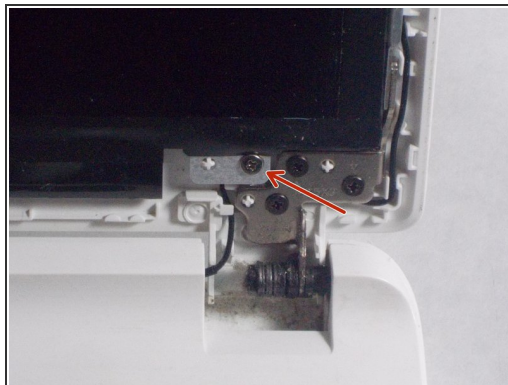
- Wedge the plastic opening tool inside the back of the screen cover and run along the perimeter of the screen.

Step 3



- Remove the screen cover from the screen.
- Pry off a pair of small covers at the back of the hinges first.
- Carefully grab the edges of the screen cover from opposite ends and pull off the screen towards you.

Step 4



- Unscrew the four 3 mm PH00 Phillips head screws located on the inside corners of the screen.

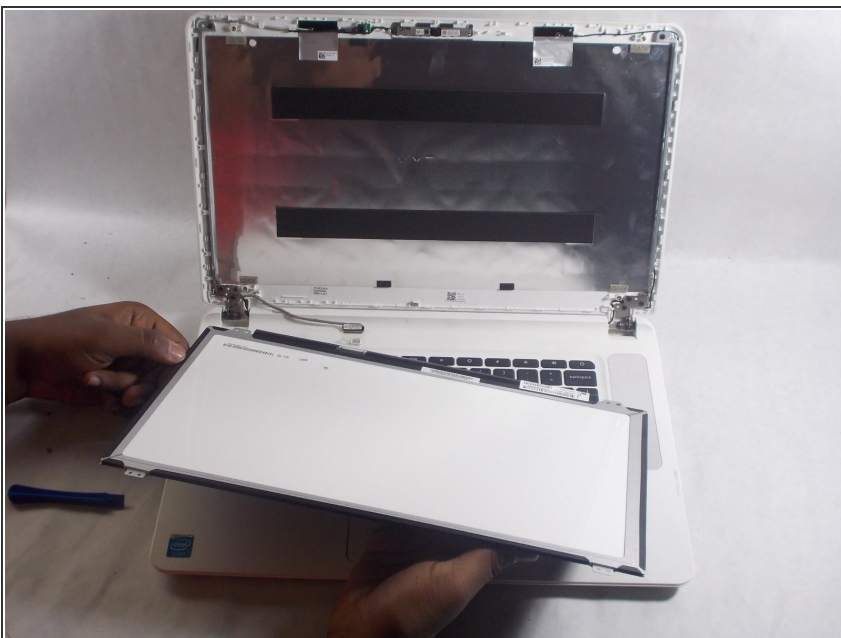
⚠ Be sure to unscrew the inner screws attached to the screen and not the outer screws.

Step 5



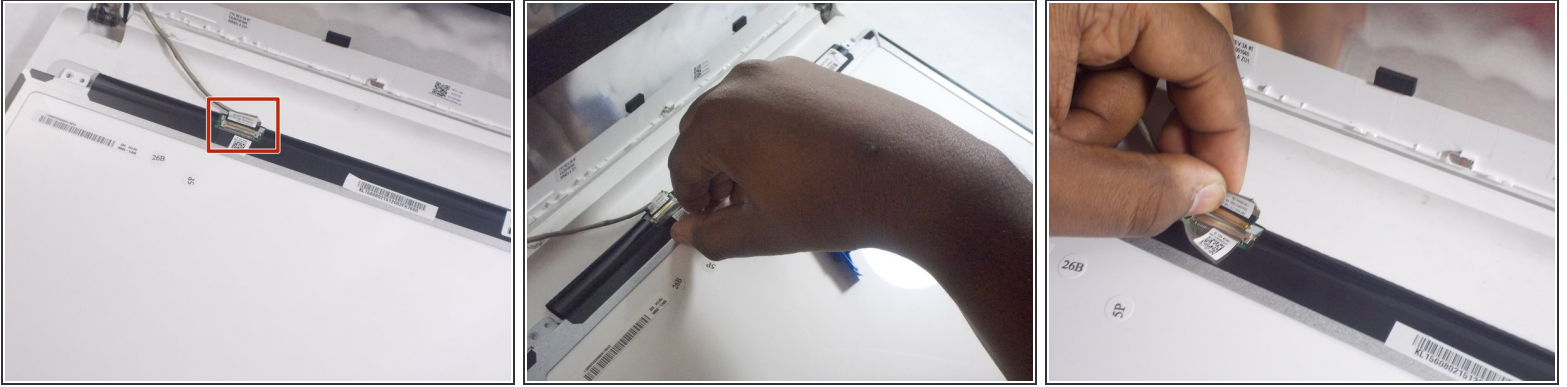
- Grab the edges of the screen and pull it out towards you.
- ⚠ Do not try to remove the screen from the device at this point. There are still connections in the back that need to be disconnected before the screen can be removed.

Step 6



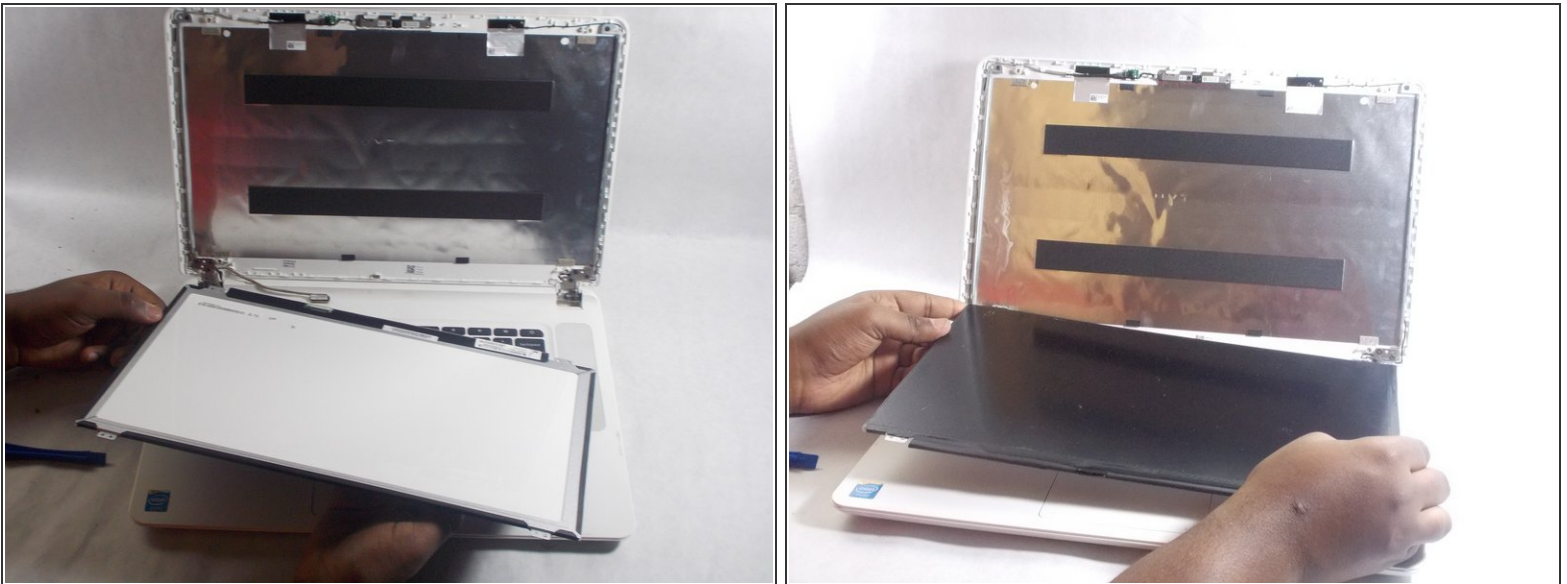
- Take out screen from top part of the device and lay it down flat on the key board.

Step 7



- Remove the screen connector from the back of the screen.
- ⓘ The screen connector is a "plug" that is connected to the back of the screen with a grey wire.
- ⓘ The screen connector is attached to the back of the screen with a sticker.
- Peel and remove the sticker connecting the screen connector to the screen.

Step 8



- Lift the screen back up from the keyboard and remove from the device.

To reassemble your device, follow these instructions in reverse order.

This document was generated on 2020-11-13 03:35:26 PM (MST).

