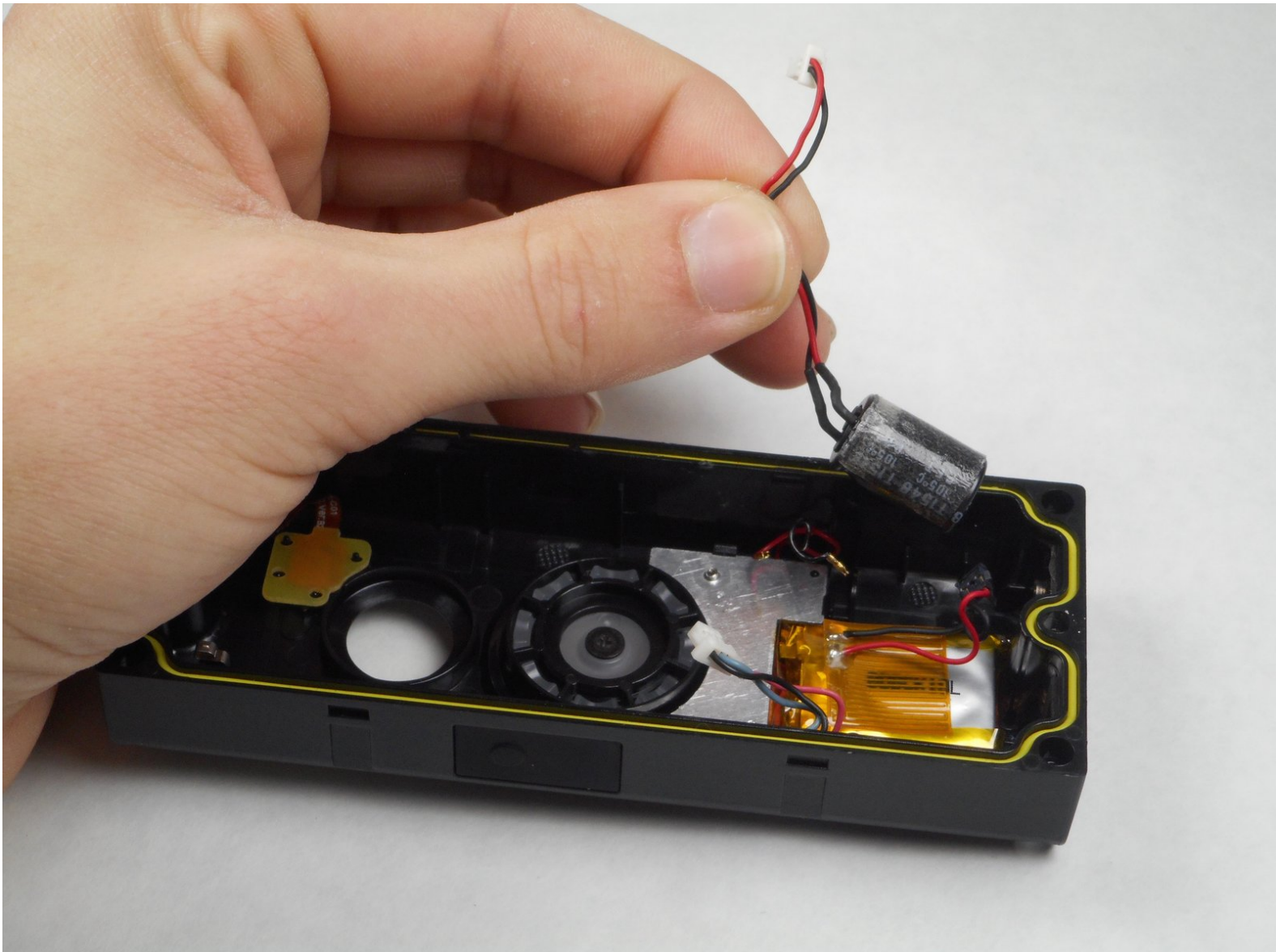




Ring Video Doorbell Pro Capacitor Replacement

This guide will give detailed steps on how to replace the capacitor in the Ring Video Doorbell Pro.

Written By: Jake Dixon



INTRODUCTION

This guide will give detailed steps on how to replace the capacitor in the Ring Video Doorbell Pro.



TOOLS:

- [Phillips PH000 Screwdriver](#) (1)
 - [iFixit Opening Tool](#) (1)
-

Step 1 — Housing



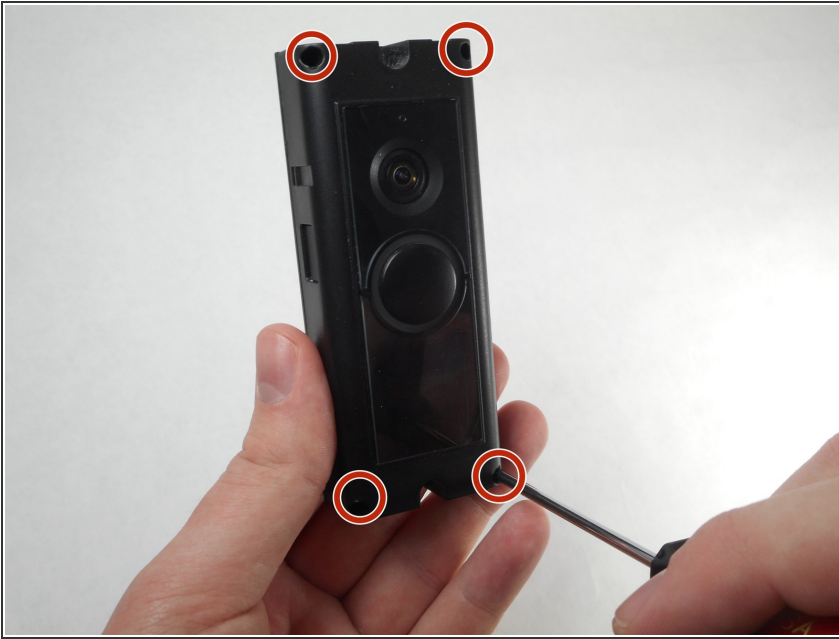
- Start by using the star-shaped end of the included Ring screwdriver to take out the 5 mm screw on the bottom of the device.

Step 2



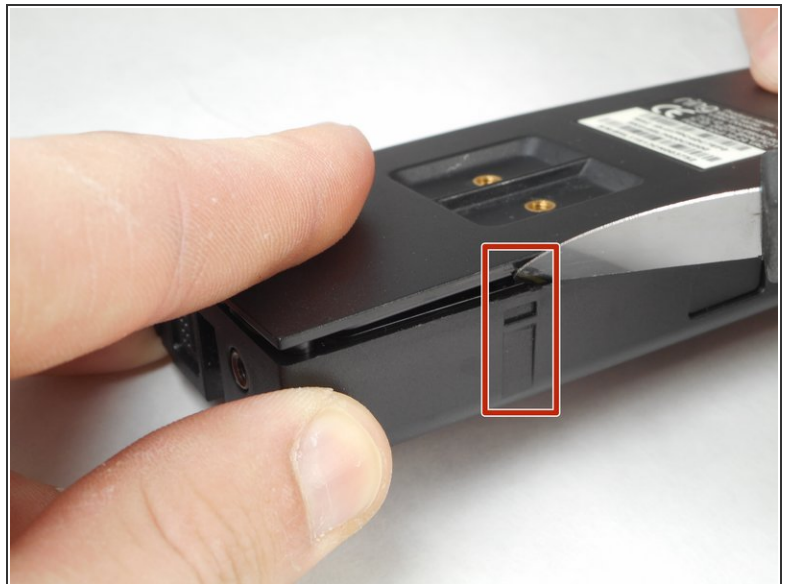
- Use your thumbs to apply downward pressure on the glass part of the device while pulling the faceplate up and off of the device.

Step 3



- Using a PH-000 screwdriver, unscrew and set aside all four of these 5.25 mm screws.

Step 4



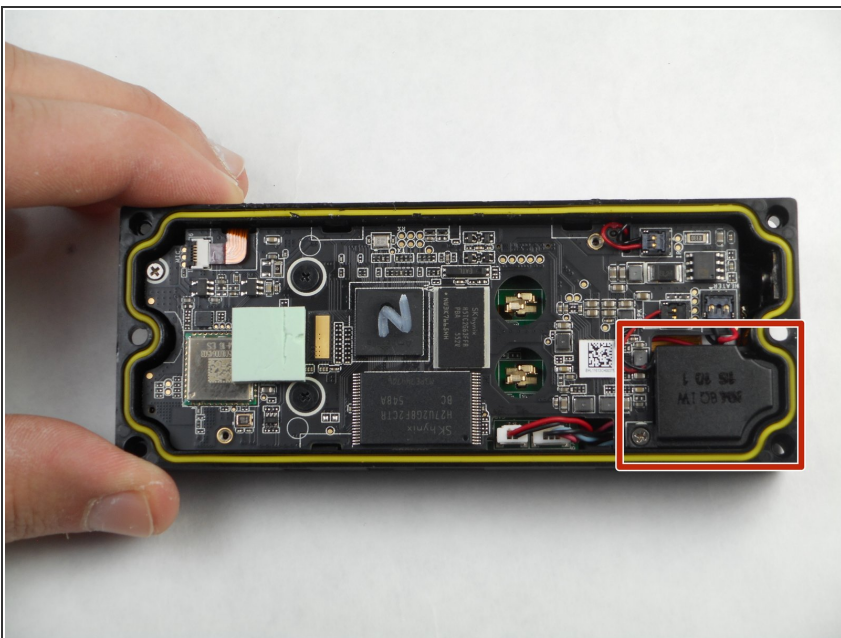
- Using a plastic pry tool, go along the edge of the device prying the device apart. While doing this, focus on the four clips, two of which are on either side of the device.

Step 5



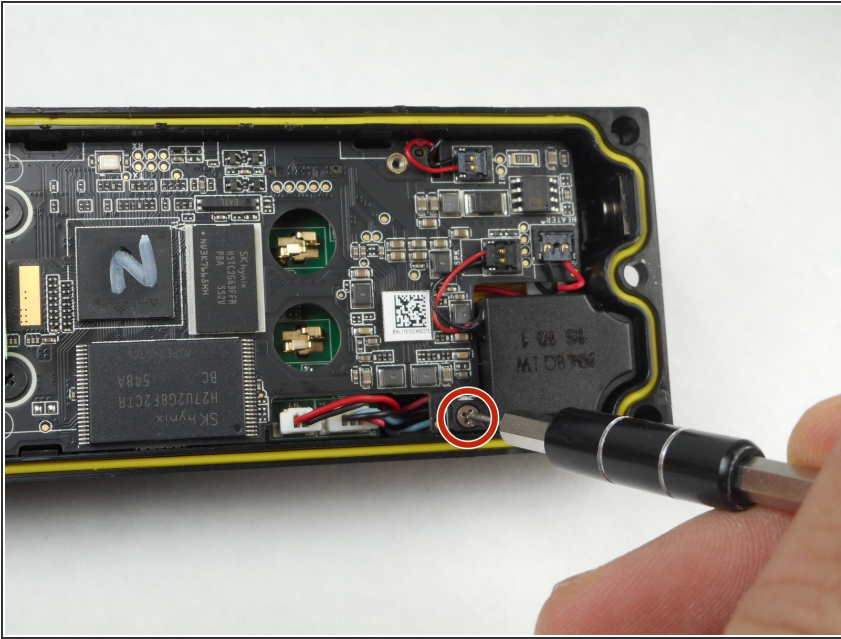
- Remove the front of the device from the back plate.

Step 6 — Speaker



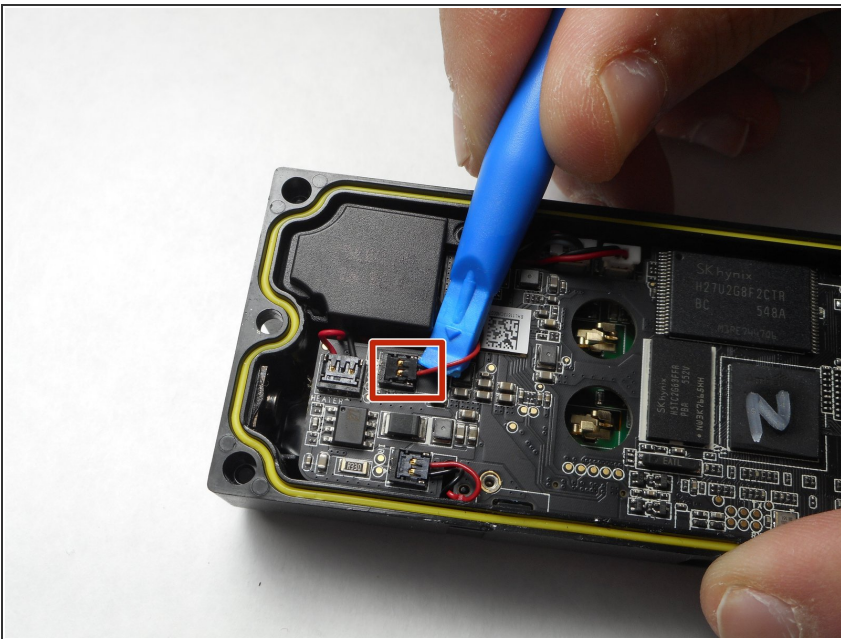
- With the Video Doorbell Pro opened up the speaker is exposed.

Step 7



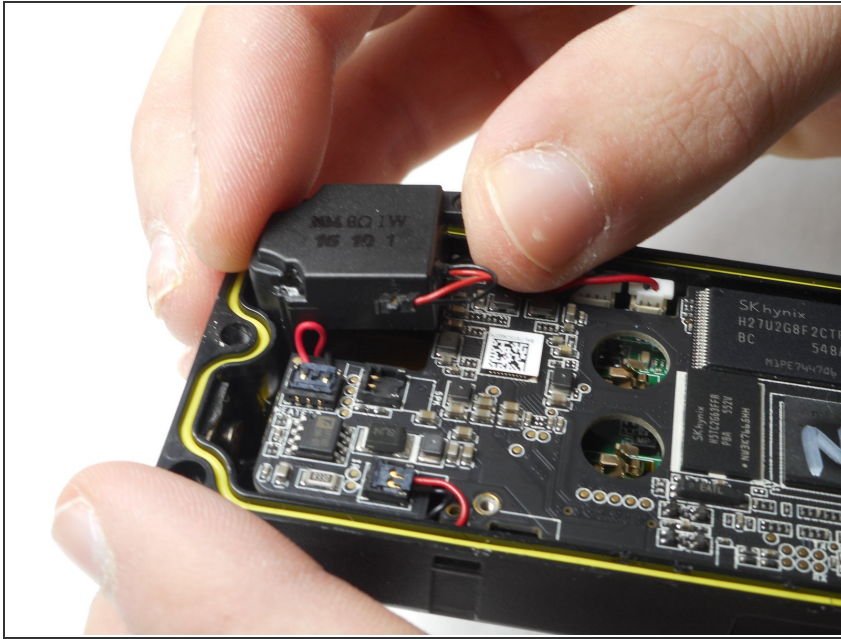
- Remove this 5.25 mm screw.

Step 8



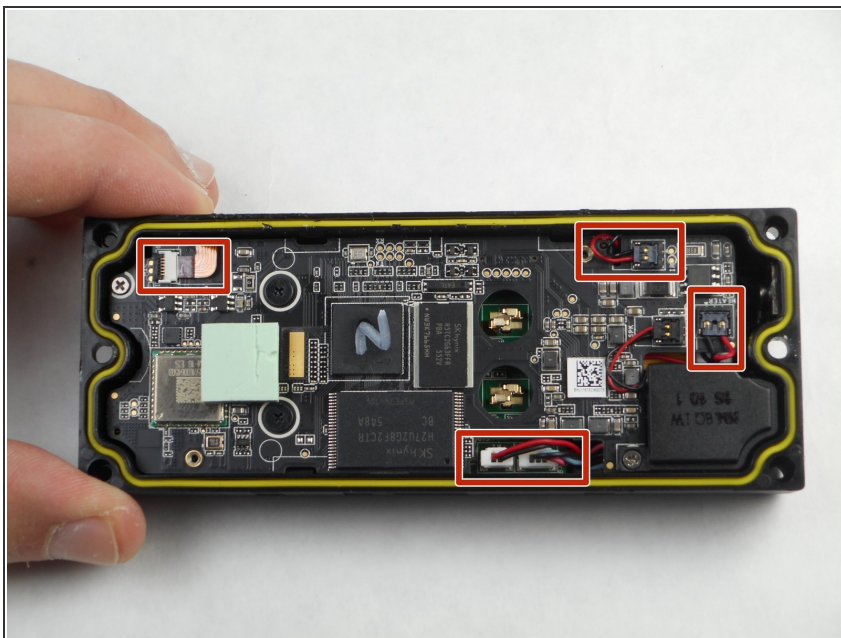
- Remove this wire connection by gently prying it off with a plastic pry tool.

Step 9



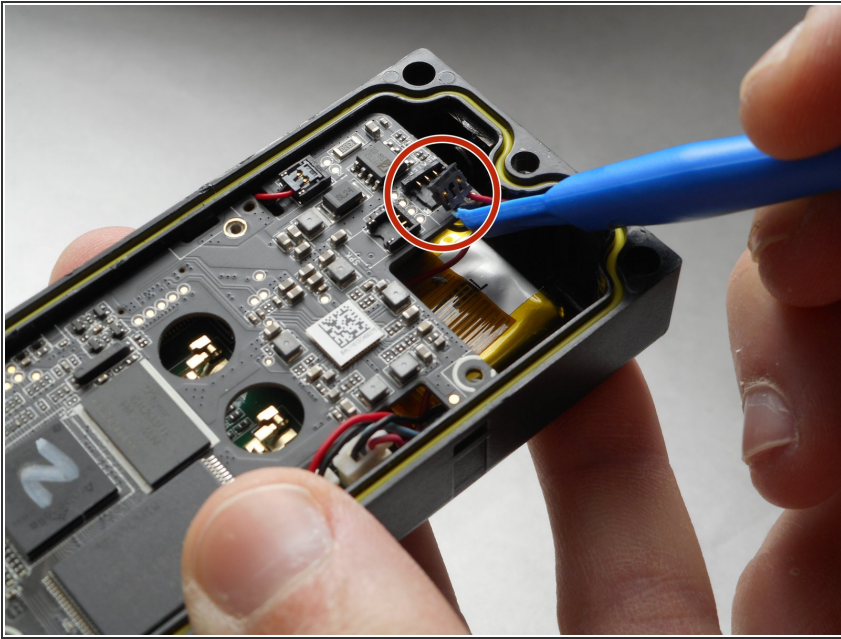
- Remove the speaker from the device.

Step 10 — Motherboard



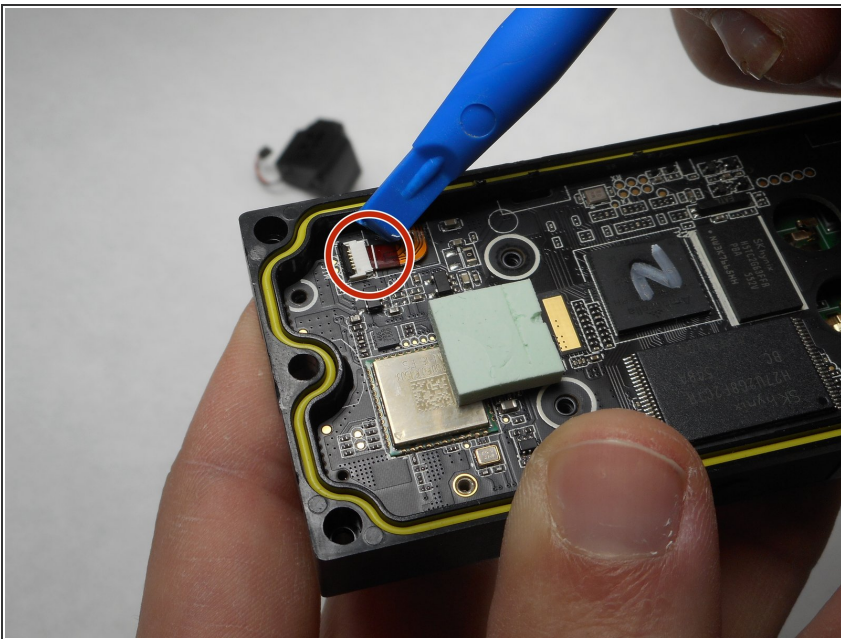
- The next step is to remove the last four connections holding the motherboard in place.

Step 11



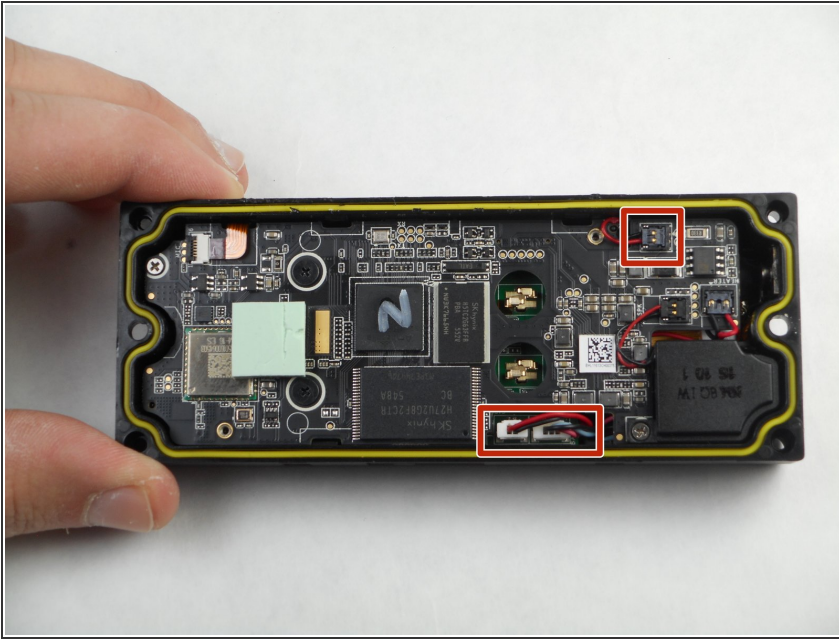
- Using the plastic pry tool, carefully remove this wire connection.

Step 12



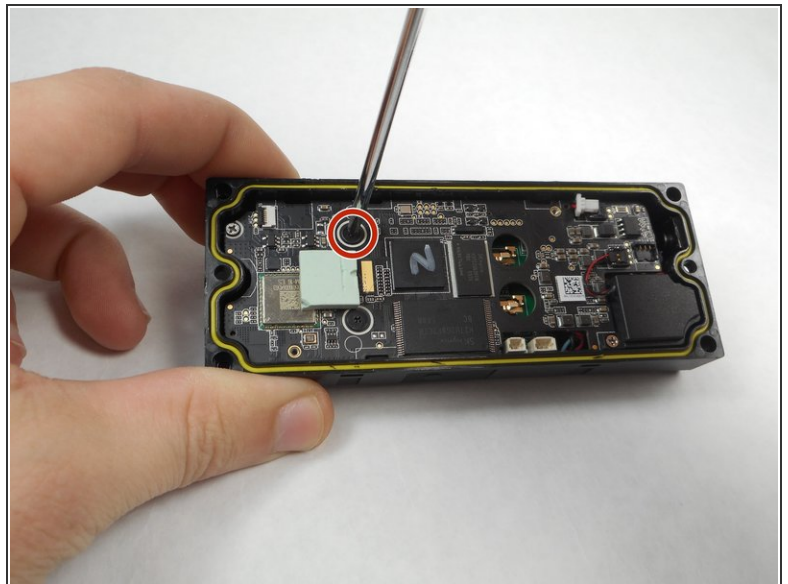
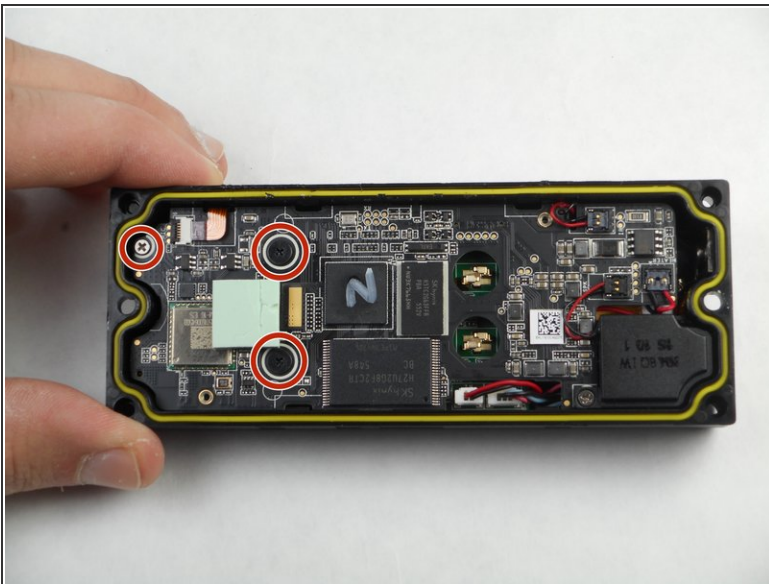
- Using the plastic pry tool, gently ease this ribbon cable from its port.

Step 13



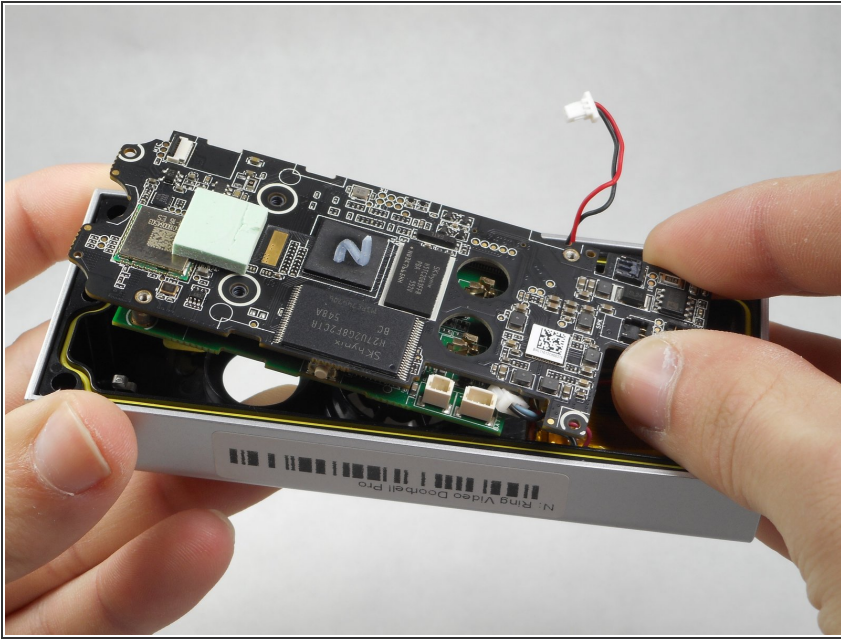
- Remove the last two wire connections shown here using the same methods utilized in the previous steps.

Step 14



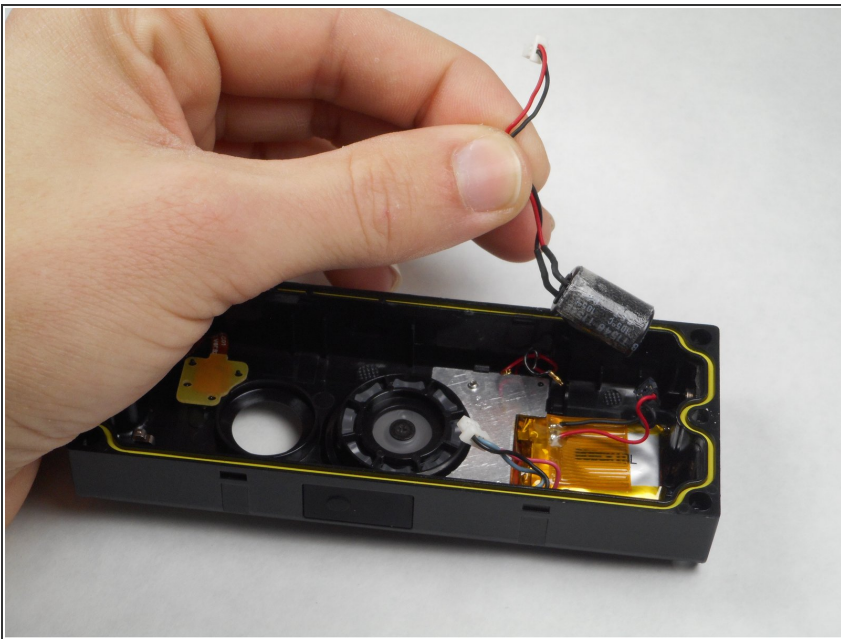
- Using the Phillips 000 screwdriver, remove these three 4.25mm screws.

Step 15



- Take the motherboard out of the housing. Lift slowly while doing this to make sure the wires and the delicate ribbon cable are not damaged.

Step 16 — Capacitor



- Remove the capacitor.

To reassemble your device, insert the new capacitor and follow these instructions in reverse order.