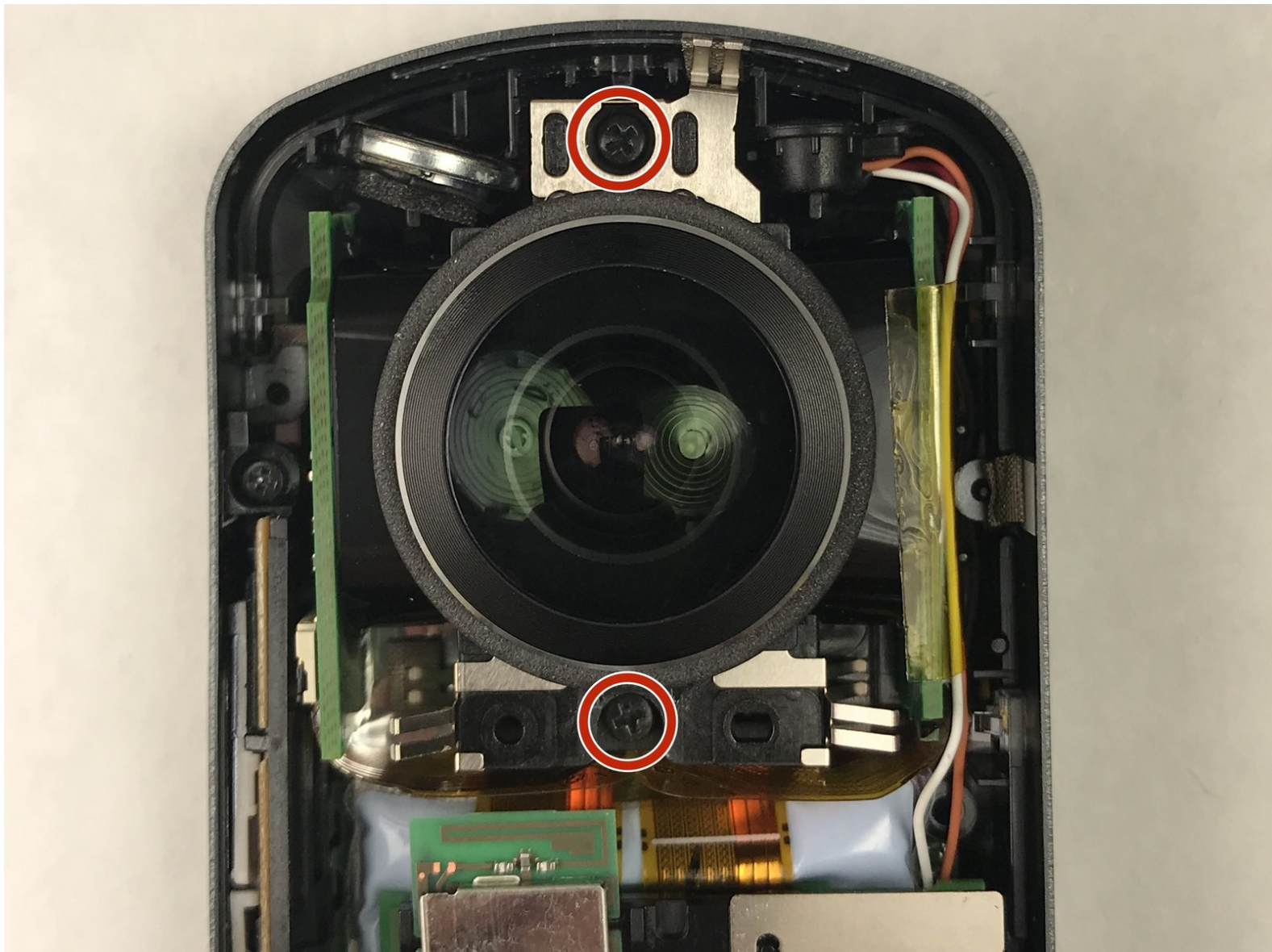




Ricoh Theta S Camera Assembly Replacement

Replace the camera assembly of your Ricoh Theta S Camera.

Written By: Bradley Sutton



INTRODUCTION

This guide will show how to replace the camera assembly for the Ricoh Theta S. Be aware that any replacement or disassembly of the original product may void the manufacturer warranty.



TOOLS:

- [Spudger](#) (1)
 - [Phillips #00 Screwdriver](#) (1)
 - [iFixit Opening Tools](#) (1)
-

Step 1 — Outer Case



- Wedge the spudger underneath the small plastic square located on the bottom of the device.
- Move the spudger to remove the plastic cover.

Step 2



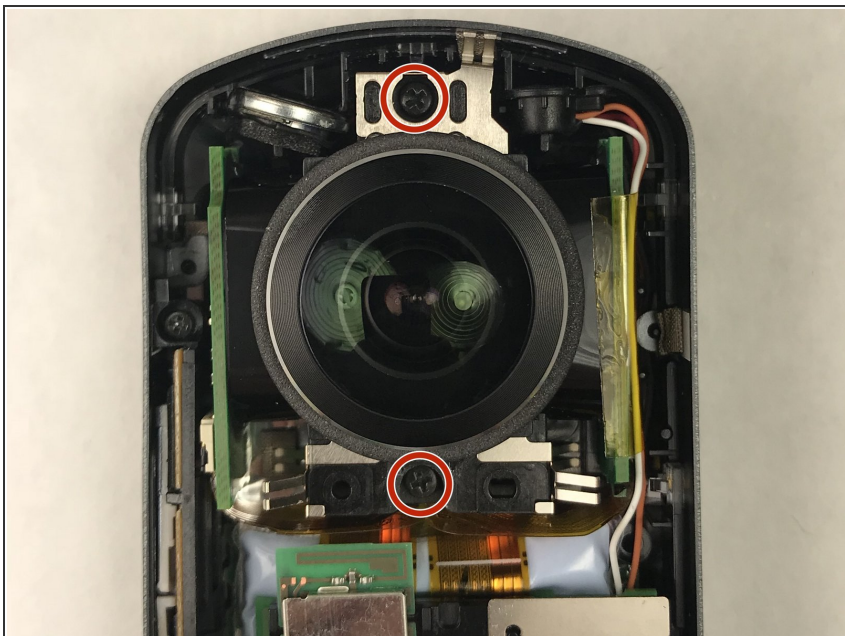
- Remove the four 3-mm screws located on the bottom of the device. You will need to use the Phillips 00 screwdriver.

Step 3



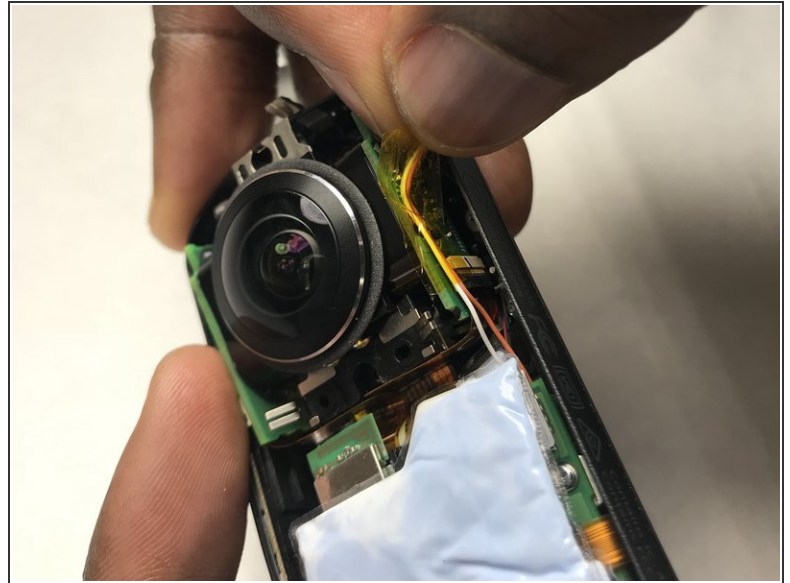
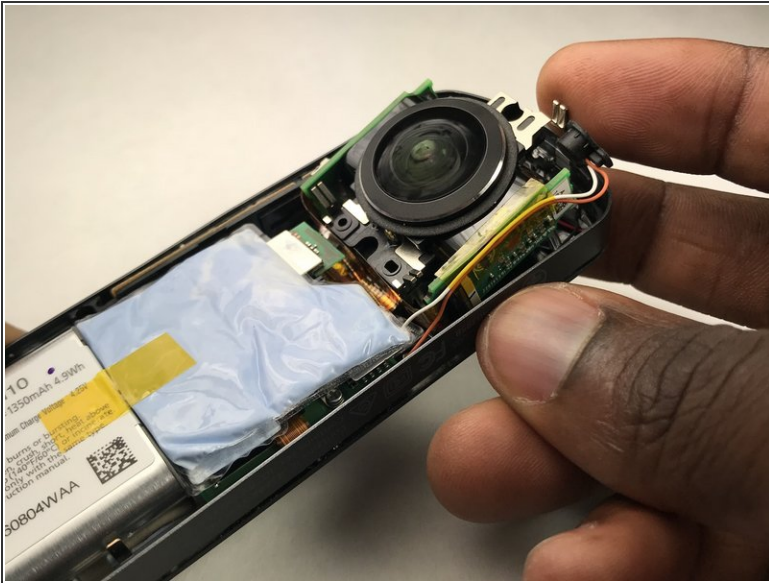
- Insert the plastic opening tool in between the panels shown.
- Apply pressure to unlatch the 9 spring clips located around the perimeter of the device.
- Lift the panel from the device.

Step 4 — Camera Assembly



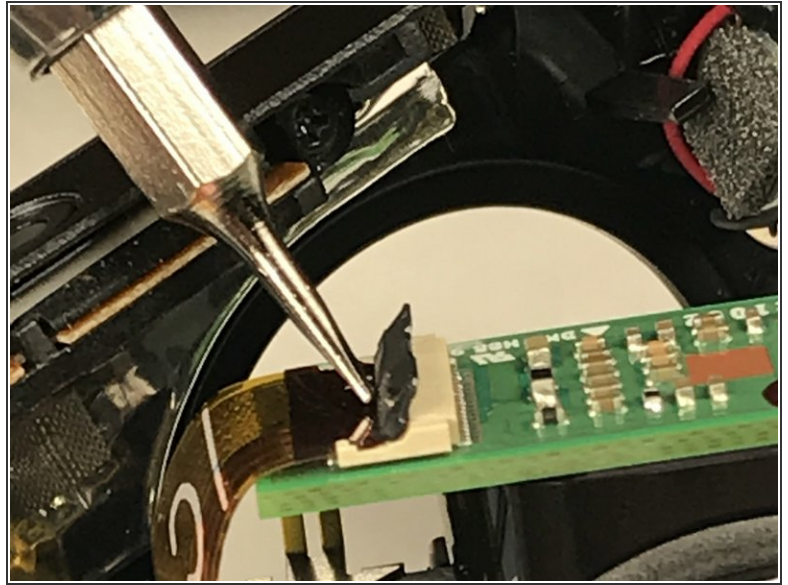
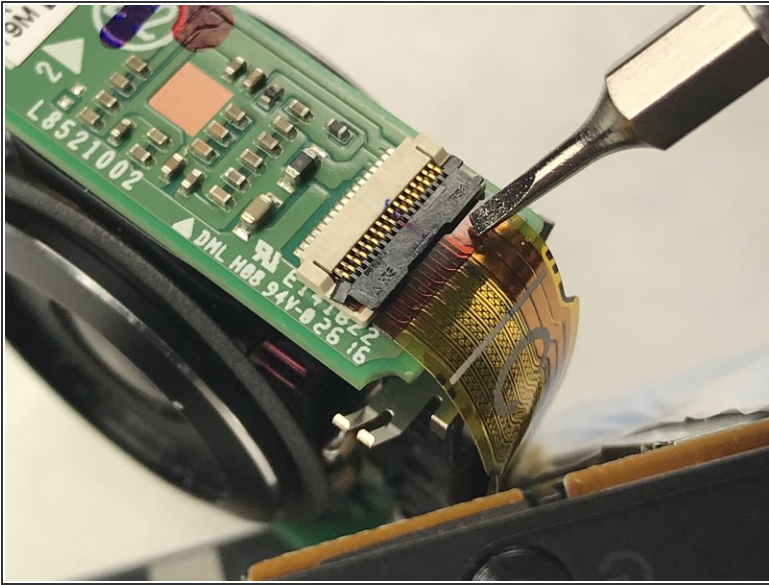
- Remove the two 3mm Phillips screws, with the Phillips 00 Screwdriver.

Step 5



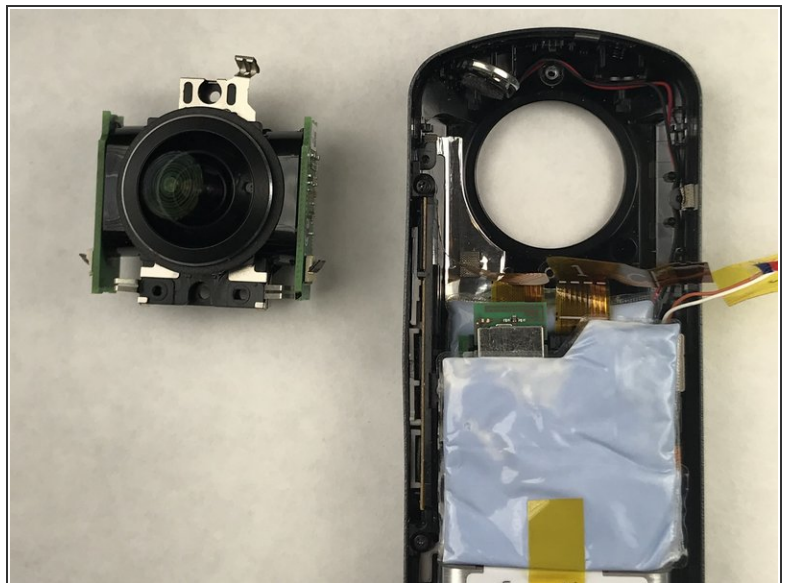
- Gently lift the camera assembly from the device until the ribbon cable connections are accessible.
- Peel back the piece of tape securing the microphone wire the the circuit board.

Step 6



- Find the two ribbon cable connectors located on each side of the device.
 - Using a plastic spudger, gently lift the black plastic piece of the connector.
- ⚠ The images show a screwdriver being used to flip up the tabs of the ZIF connectors, which carries the possibility of shorting the motherboard. Be sure to use an ESD safe tool instead!

Step 7



- Carefully detach the two ribbons cables from their connectors to remove the camera assembly.

This document was generated on 2021-01-12 08:56:14 PM (MST).

To reassemble your device, follow these instructions in reverse order.