



Philips Norelco BG2040 BodyGroom 7100

Motor Replacement

Disassemble and replace Motors in the Philips Norelco Bodygroom series 7100.

Written By: August Post



INTRODUCTION

This guide will show how to take out a broken motor, and replace it with a new one. You may need this if either the trimmer or shaver head on the Philips Norelco Bodygroom stop working due to motor malfunctions. It is also necessary for this guide to show how to disassemble and reassemble the trimmer in order to get to the motors. It is recommended to have the iFixit Pro Tech Toolkit since it will contain all tools necessary for this guide. Lastly, you will need to provide your own working motor to replace the broken one.



TOOLS:

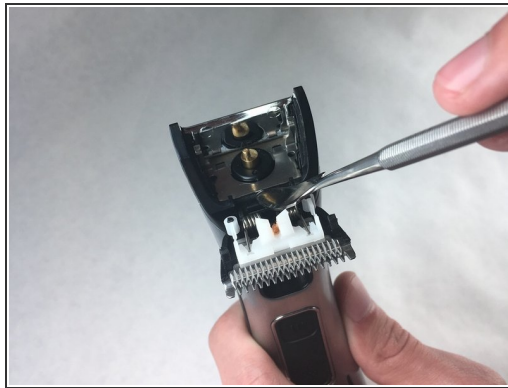
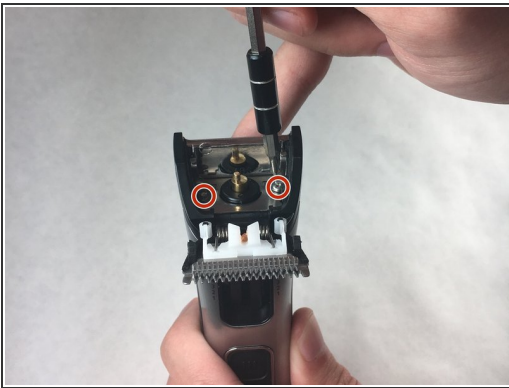
- [Soldering Iron](#) (1)
 - [Spudger](#) (1)
 - [JIS #0 Screwdriver](#) (1)
 - [JIS #00 Screwdriver](#) (1)
-

Step 1 — LED Board



- Place thumb behind trimming blade and push up to open.

Step 2



- Remove two screws (M2 x 9.5) on metal plate with JIS 0 screwdriver bit.
- Use spudger to pry off metal plate.
- Slide up plastic housing to remove the trimmer.

Step 3



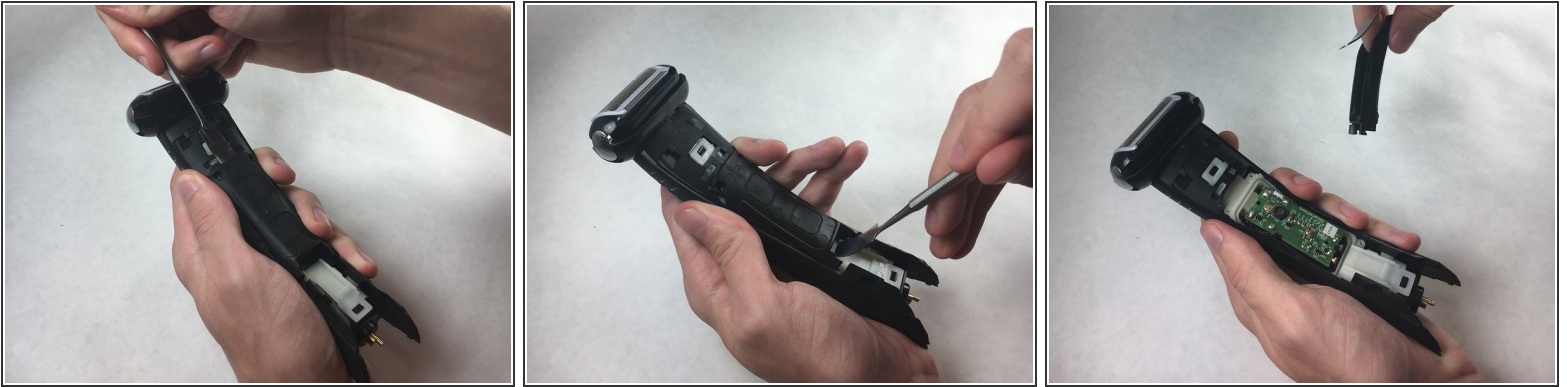
- Slide chrome outer plastic towards removed trimmer.
- Flip to the other side and repeat, sliding the chrome plastic towards removed trimmer.


Step 4



- Remove two top screws (M2 x 6.9) with the JIS 00 screwdriver bit.
- Remove two bottom screws (M2 x 6.9) with the same bit.

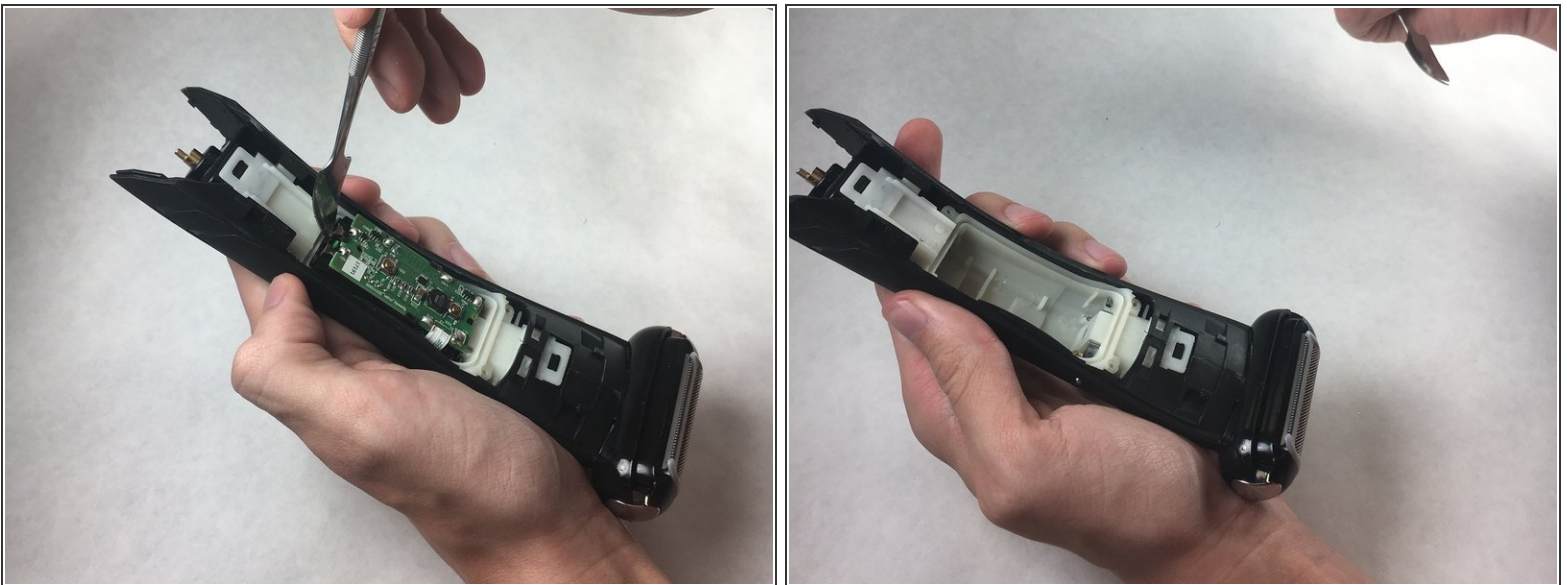
Step 5



 Use spudger to pry off top of the battery cover. **WARNING:** fairly difficult, be aware significant amount of force required.

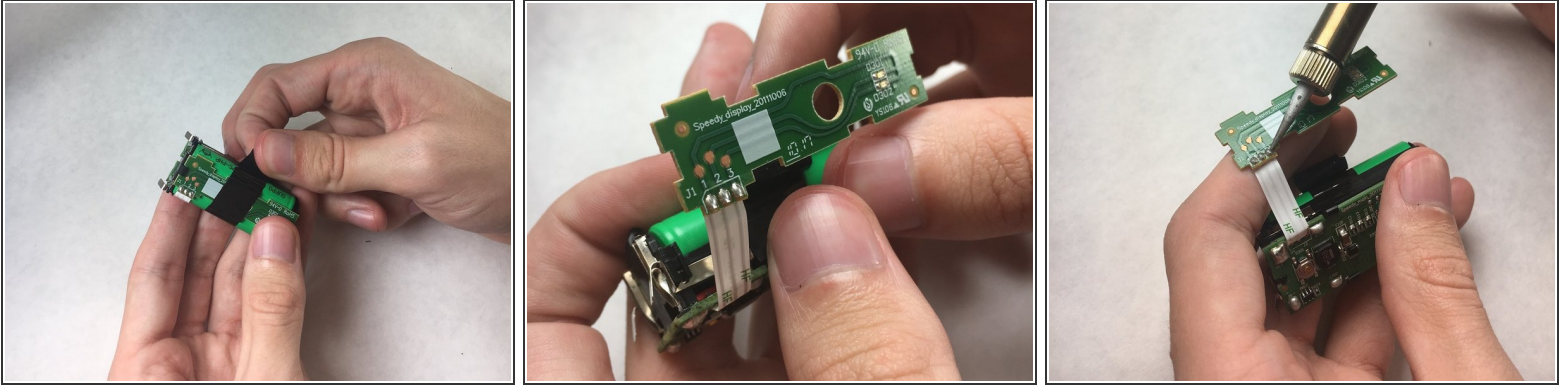
- Use spudger to remove bottom of the battery cover, and remove it.

Step 6



- Use a nylon spudger to pry out battery pack and the attached LED board.

Step 7



- Unwrap electrical tape around the battery pack and LED board.
- Desolder the LED board from the battery pack.
- Solder the new LED board back to the connection to battery pack.

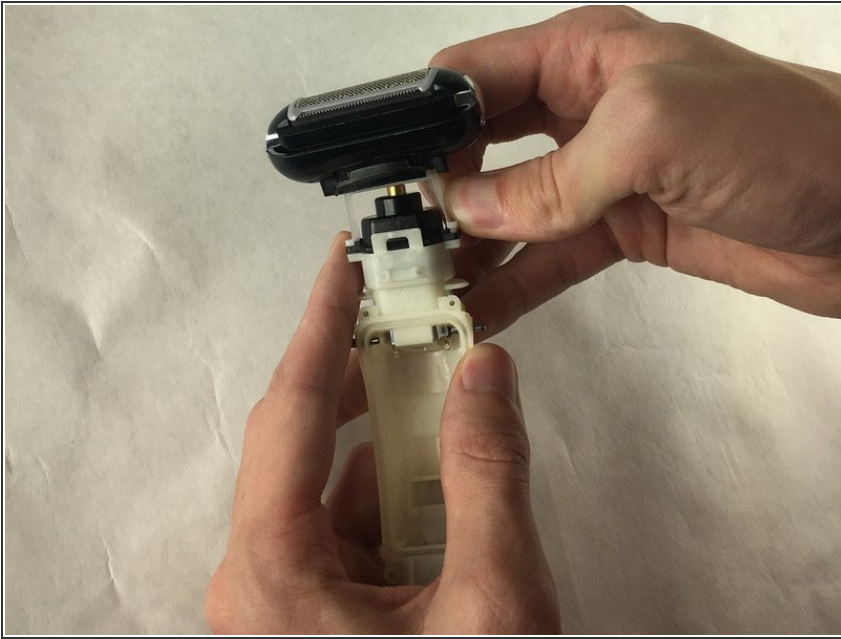
Step 8 — Motor



i *Please note that you do not need to remove the LED board from the battery pack for this guide. Begin the following steps after removal of the entire battery pack.*

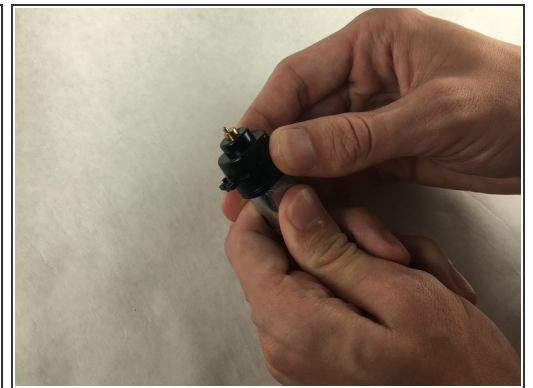
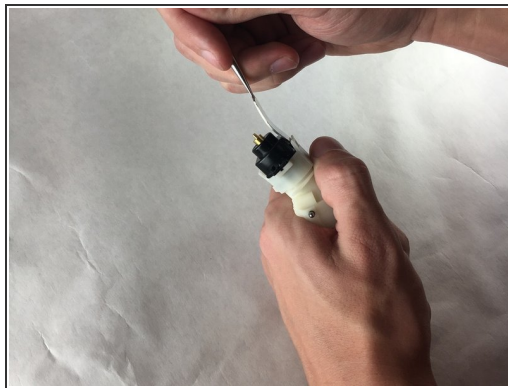
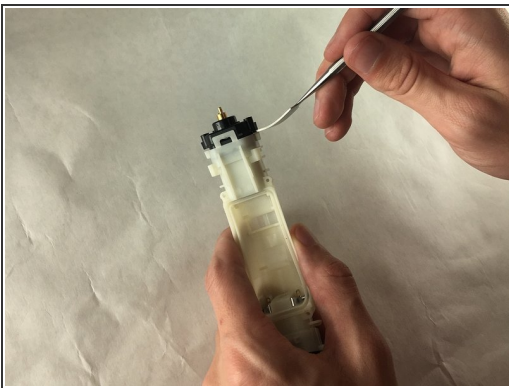
- Using the spudger, unclip the plastic housing around white casing.
- Remove one half of the black housing first, and then proceed to the next half.

Step 9



- Once housing is removed, pull off shaver head. *Once black housing is removed this part may fall off*

Step 10



- Use spudger to pry motor out of the white housing.
- Pull waterproofing case off of the motor.

To reassemble your device, follow these instructions in reverse order.