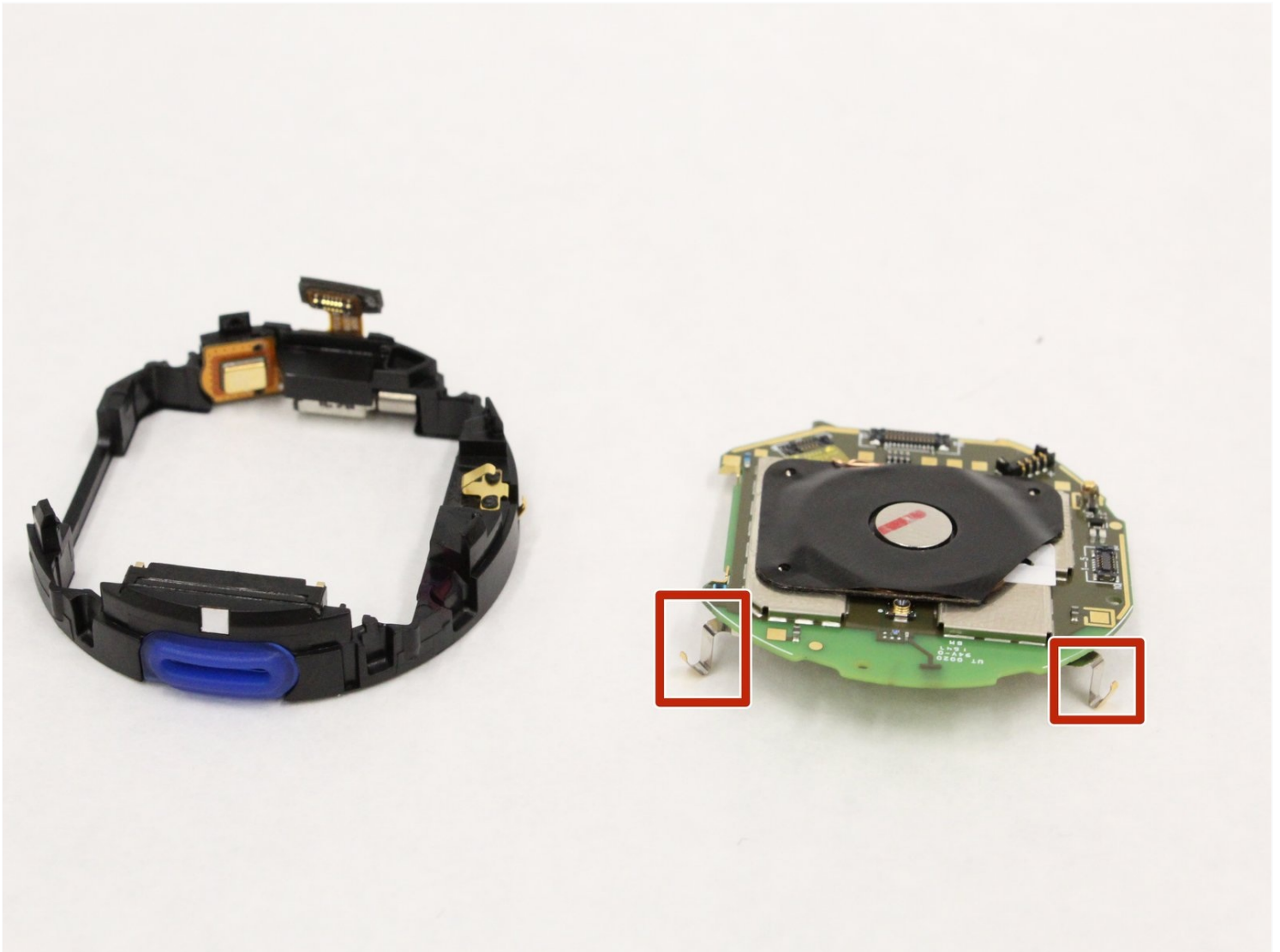




Fossil Q Marshal Gen 2 Motherboard Replacement

This repair guide will show you how to replace...

Written By: Matthew Tucker



INTRODUCTION

This repair guide will show you how to replace the motherboard on a Fossil Q Marshal Gen 2 smartwatch. Be careful not to damage the motherboard, wiring, or the metal connectors on your smartwatch.

TOOLS:

[Tweezers](#) (1)
Straight tipped work best
[Spudger](#) (1)

PARTS:

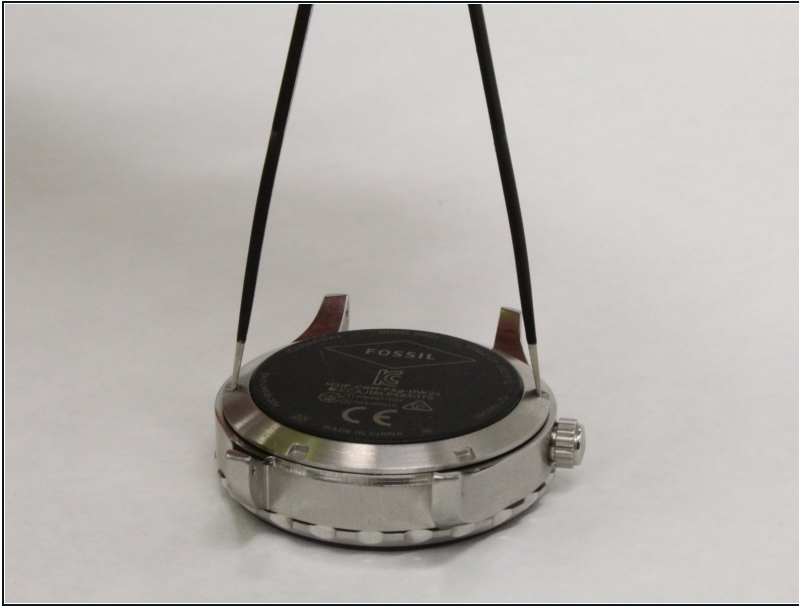
[Fossil Q Marshal Gen 2 Motherboard](#)
(1)

Step 1 — Back Cover



- Squeeze retaining pins together to release chain from watch body. This can be done by hand or with [tweezers](#).
- Remove chain from opposing side of watch body.

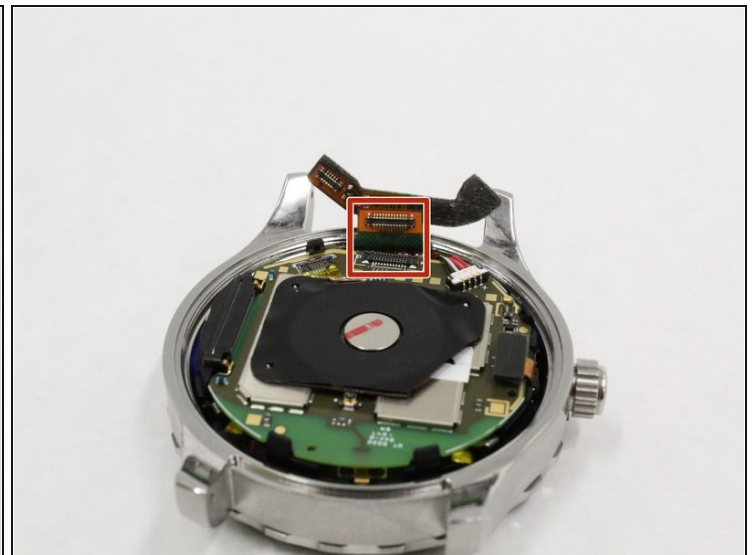
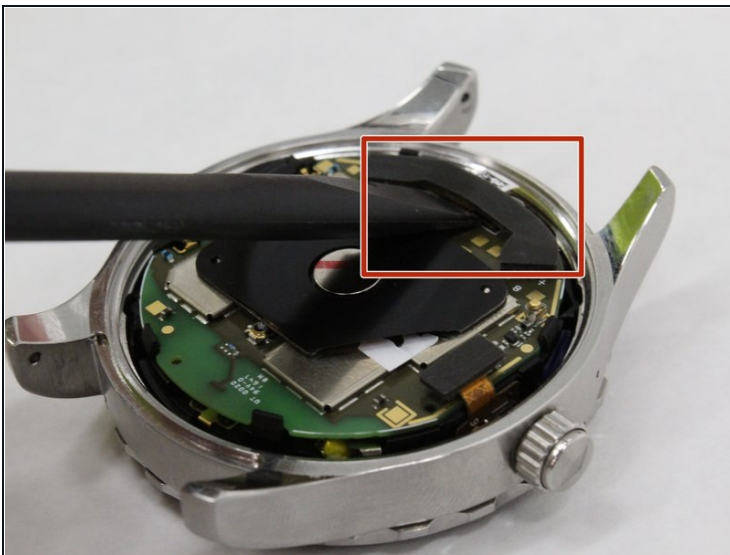
Step 2



- Use tweezers to grip the notches on the back cover, then unscrew the back cover (counter-clockwise) from the watch housing.

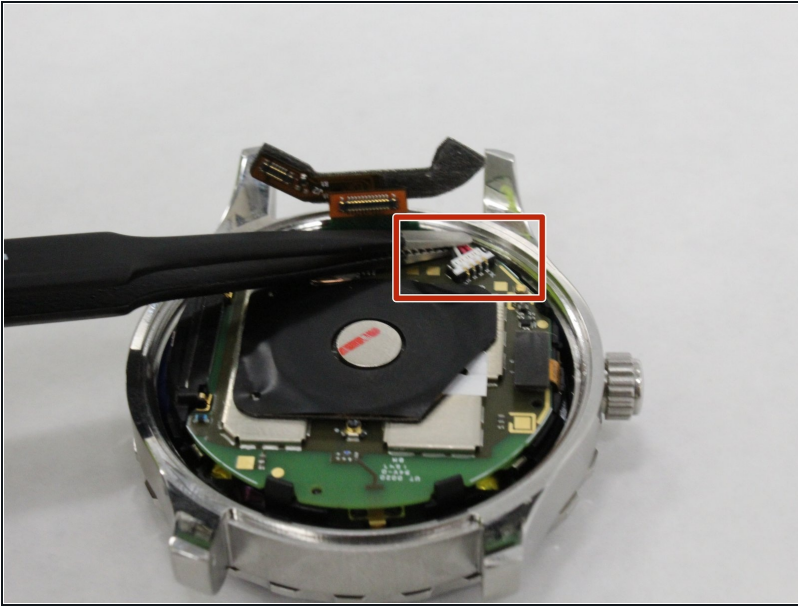
ⓘ There is an actual tool made to remove this back cover, using the right tool may save you from scratching the back of watch with tweezers. The backcover tool can be purchased online, a local jeweler may also be willing to remove it for you.

Step 3



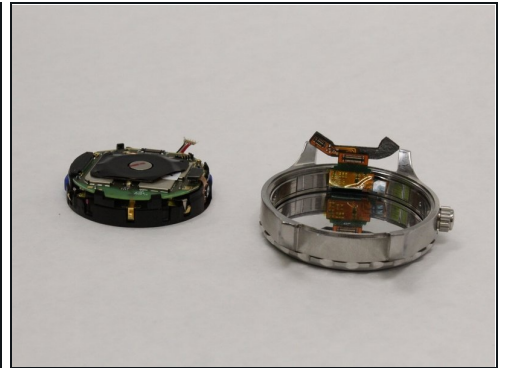
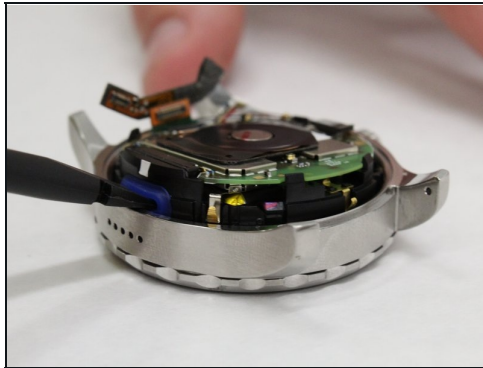
- Utilize tweezers or a spudger or your fingers to pull the black wire connector from the motherboard.
- Utilize a spudger to pull the orange connector off of the motherboard.

Step 4



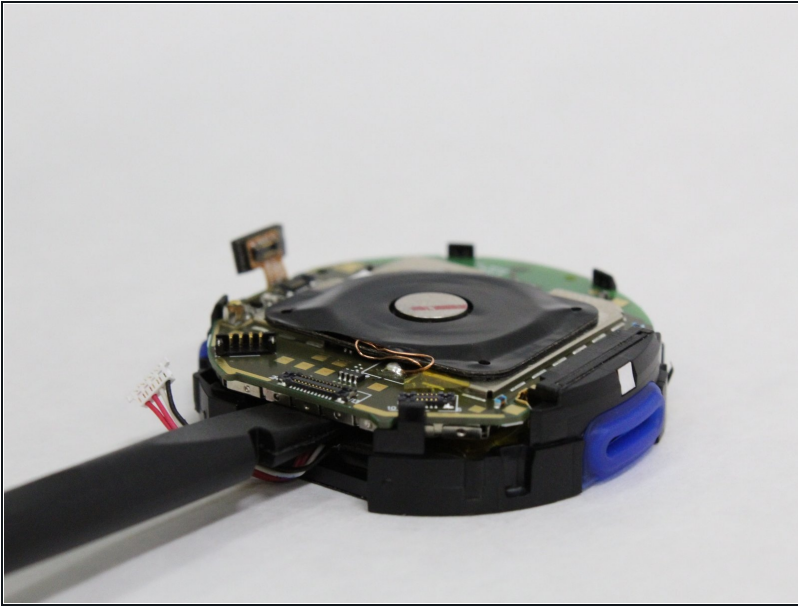
- Utilize tweezers to pull the white battery connector from the motherboard.

Step 5



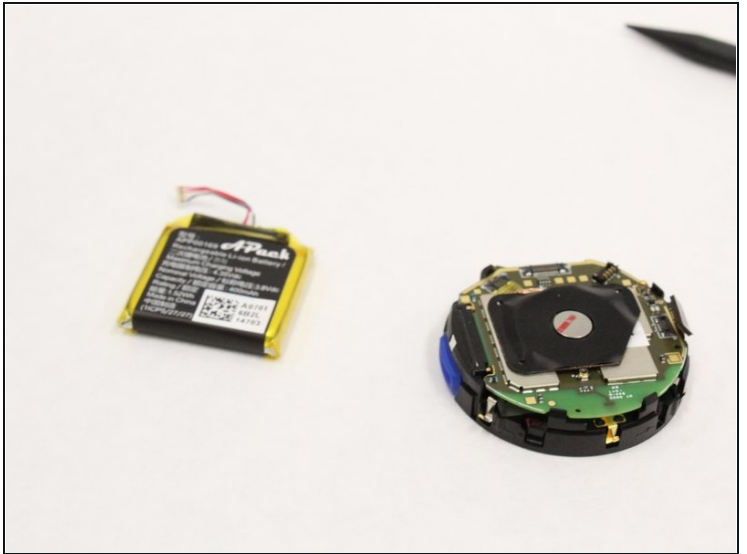
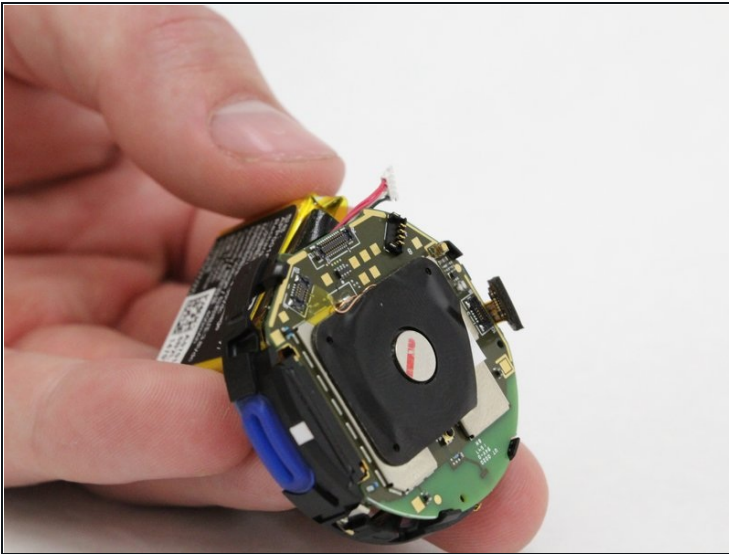
- The internal electronics can now be pulled out of the watch as one unit leaving the screen remaining in the watch housing.
- Taking the flat end of the spudger, pry it up.

Step 6 — Battery



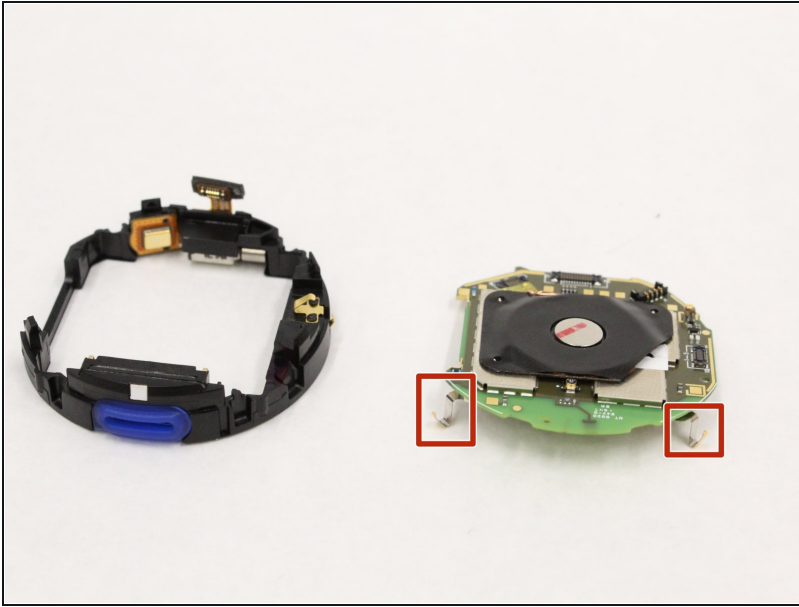
- The battery is secured to the back of the motherboard utilizing a sticky pad. Gently separate the battery from the board while making sure not to put too much stress on the board. This is best done at the location shown.

Step 7



- Remove battery from plastic housing.
- Slip wires through large slot in plastic housing to completely remove.

Step 8 — Motherboard



- Using your finger remove the metal hooks from the black electronic housing.

To reassemble your device, follow these instructions in reverse order.