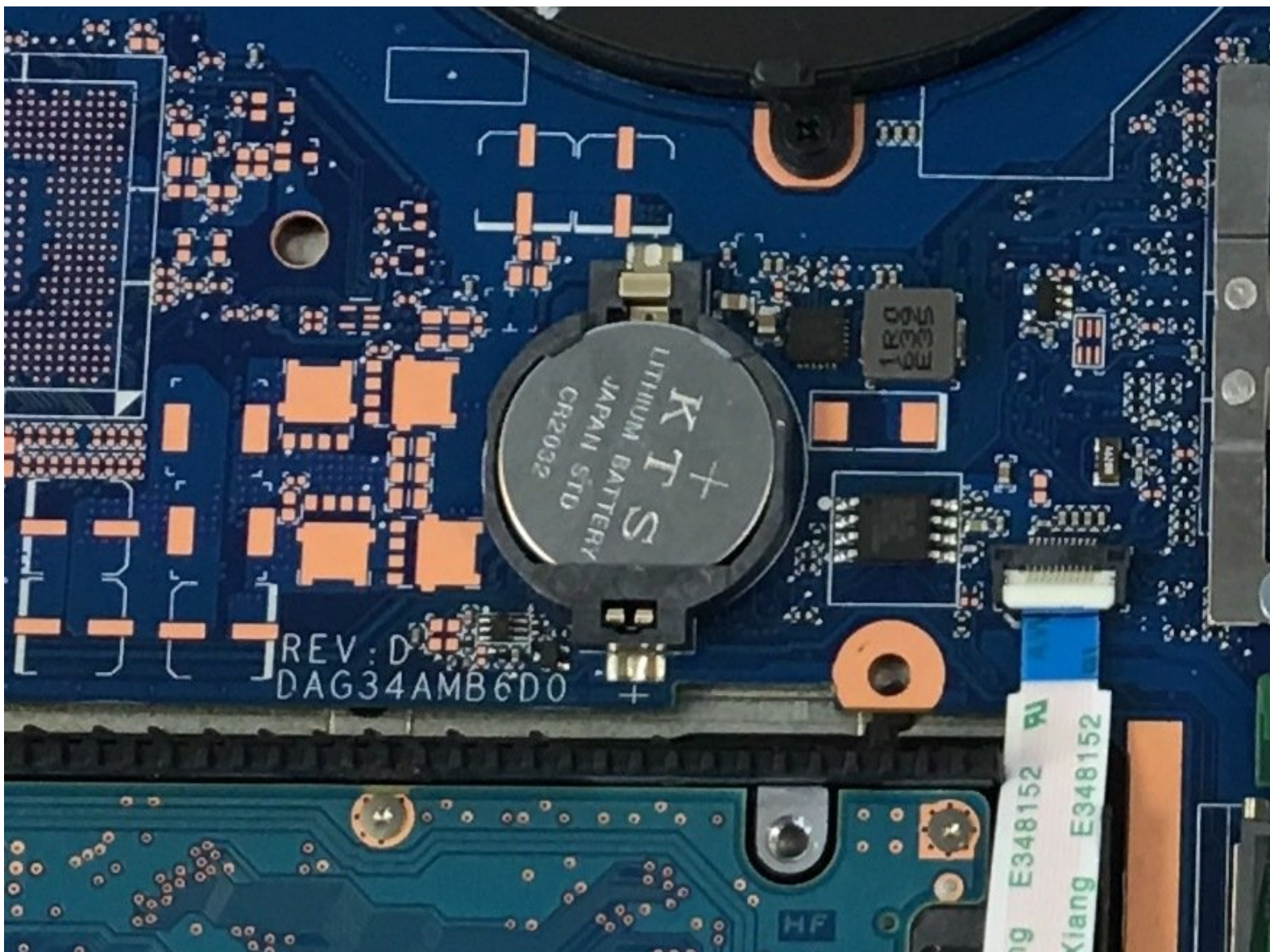




# HP Pavilion 15-au123cl CMOS Battery Replacement

If you are having issues with your CMOS battery, follow this guide for replacing it for the HP Pavilion 15-au123cl.

Written By: Mohammad Gardezi



---

## INTRODUCTION

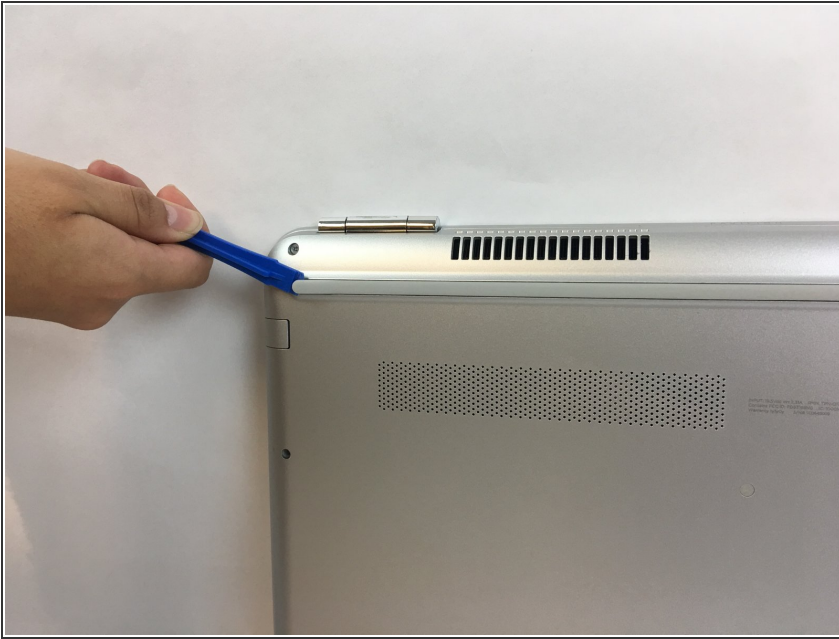
If you are noticing the settings are wrong on the BIOS, you will want to follow this guide to reset the BIOS settings. The CMOS battery holds BIOS settings so booting up the computer after removing the battery should fix all BIOS issues.



### TOOLS:

- [Phillips #0 Screwdriver](#) (1)
  - [iFixit Opening Tool](#) (1)
  - [Spudger](#) (1)
-

## Step 1 — Battery



- ★ Make sure the laptop is off and unplugged before starting.
- Using the plastic opening tool, remove the top rubber feet on the back panel as it hides one of the screws we will be removing.

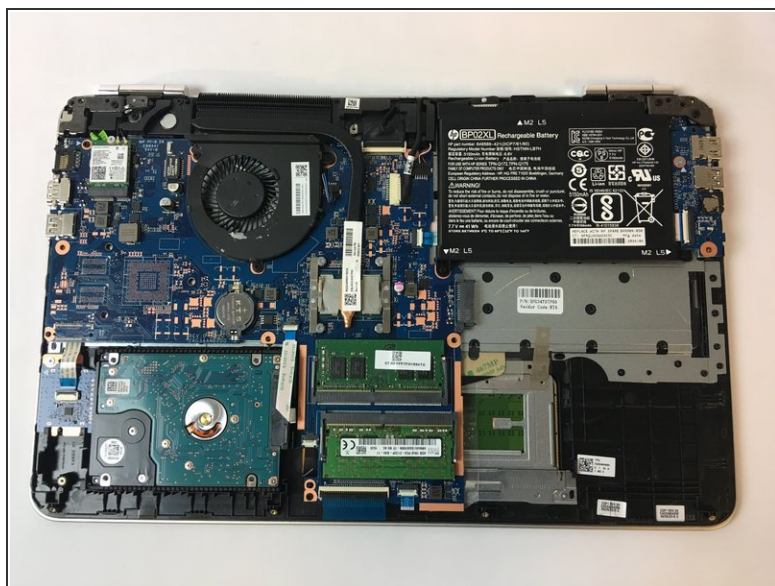
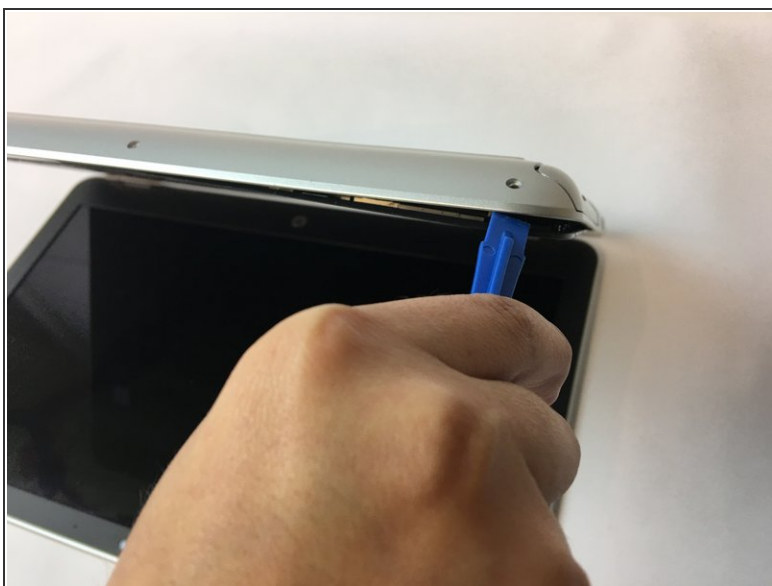
## Step 2



- Using a PH0 screwdriver, unscrew the ten 4.4mm Phillips head screws located on the back panel.



## Step 3



- Using the plastic opening tool, remove the back cover of the laptop.
- ⓘ It is recommended that you start with a corner and run the tool throughout the edges of the cover.
- ⚠ Be sure not to bend the cover by applying too much force.

## Step 4



- Using a PH0 screwdriver, unscrew the two 3.8mm PH0 Phillips head screws that hold the battery in place.

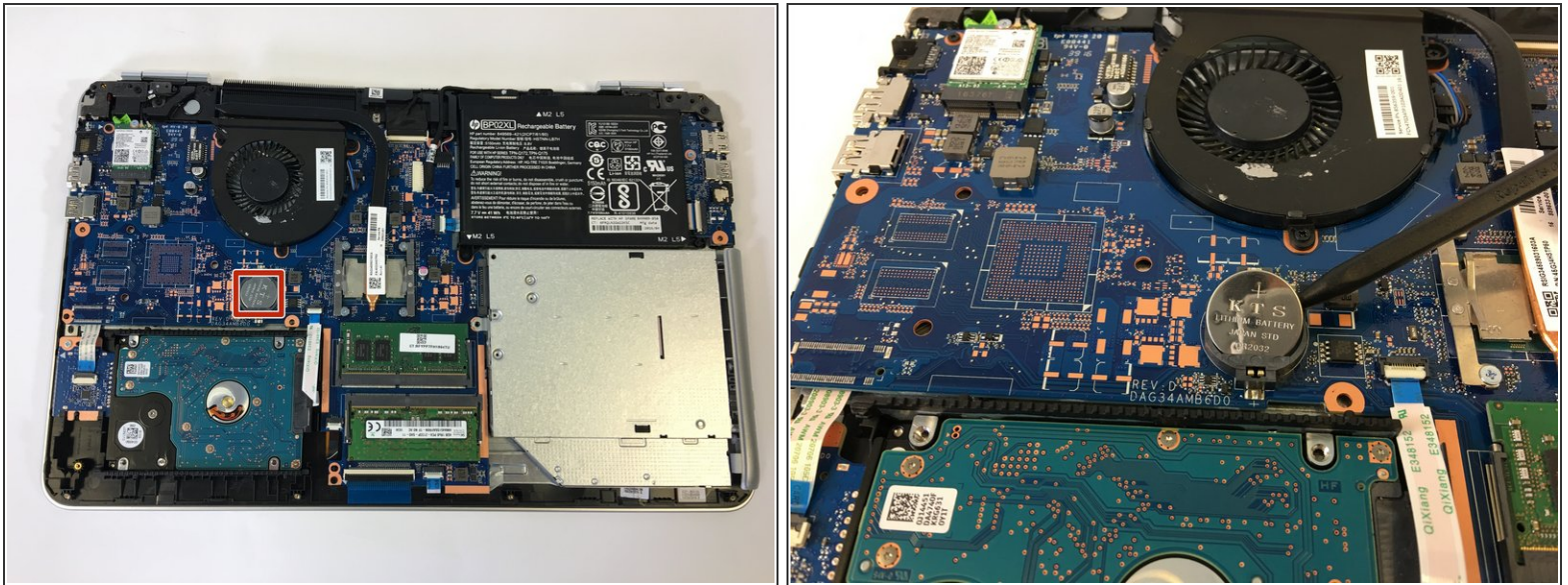
## Step 5



- Carefully disconnect the cable connecting the top of the battery and remove the battery.

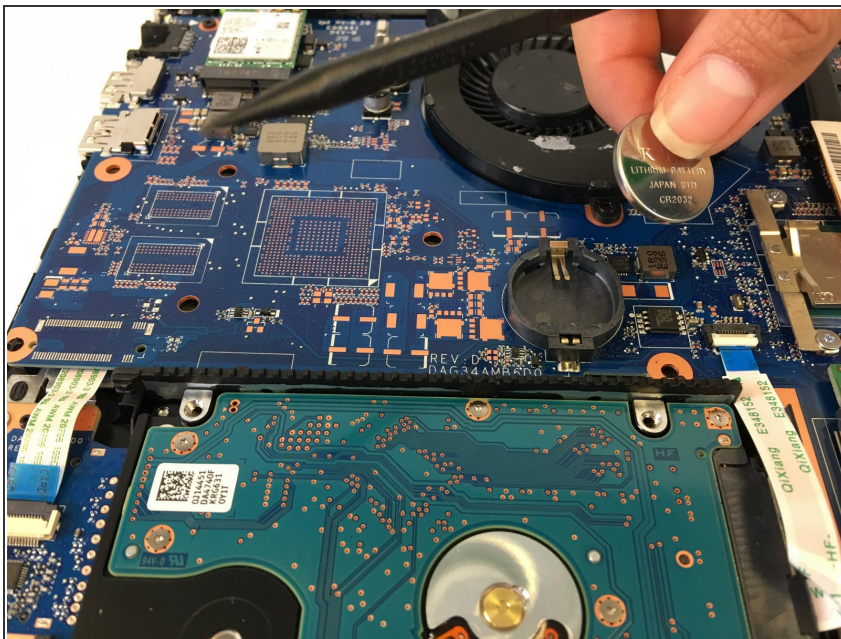


## Step 6 — CMOS Battery



- The CMOS battery is located toward the middle left area of the motherboard.
- Using the spudger, lift the CMOS battery out of its plastic casing.

## Step 7



- Fully remove the CMOS battery from the motherboard.

To reassemble your device, follow these instructions in reverse order.