



# Gateway P-7805u Hard Drive Replacement

Learn how to easily replace your Gateway P-7805u's hard drive!

Written By: Emily Pendleton



---

# INTRODUCTION

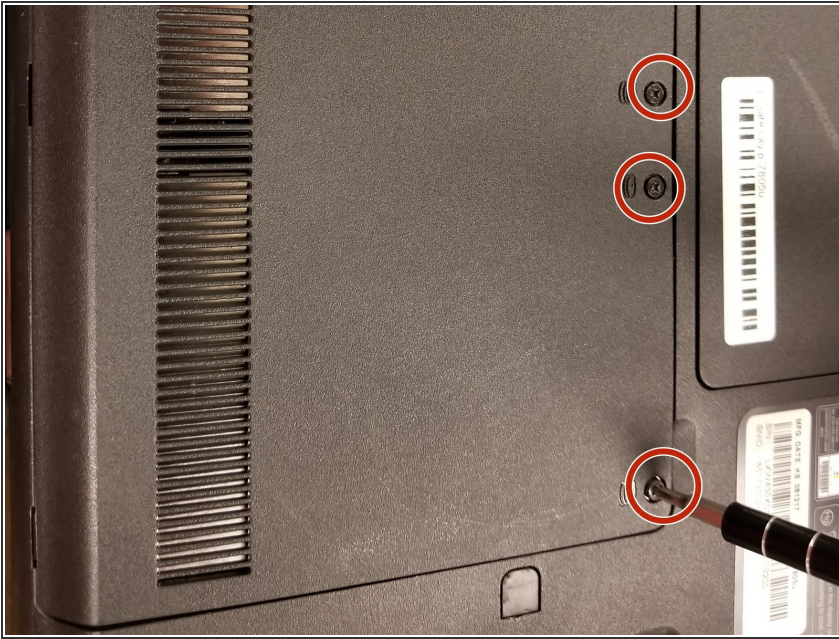
This guide will show you how to replace your laptop's hard drive.



## TOOLS:

- [JIS #0 Screwdriver](#) (1)
-

## Step 1 — Hard Drive



- Unscrew all .5mm screws from the back rectangular panel. Use a J0 screwdriver.
- ⓘ Screws will not come out all the way out. Simply unscrew until they do not come out any further.

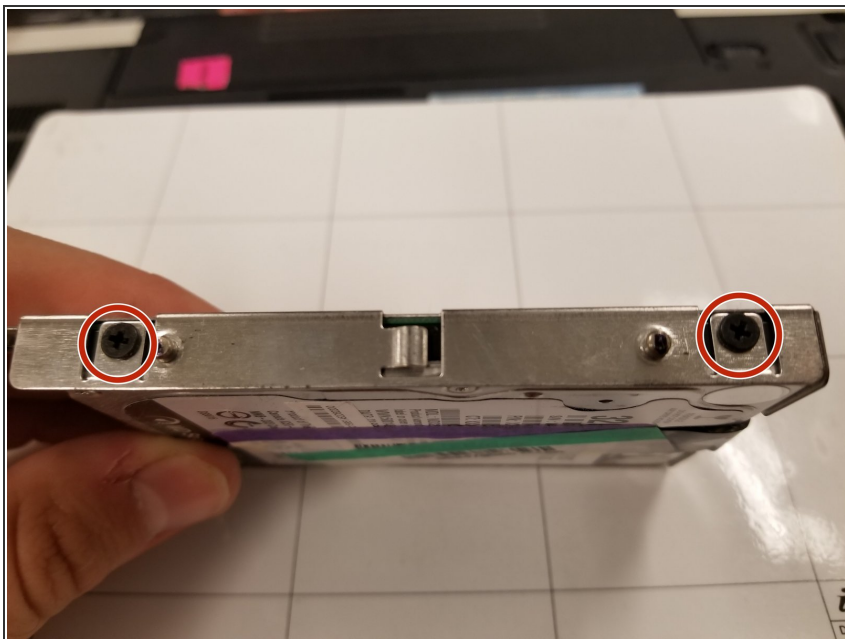
## Step 2



- Firmly press with your hand on the silver surface and pull back, dislodging the hard drive from its port.



### Step 3



- Remove the four 1.2mm screws attaching the case to the hard drive. Use the same J0 screwdriver.

### Step 4



- Pull out the old hard drive.

To reassemble your device, follow these instructions in reverse order.