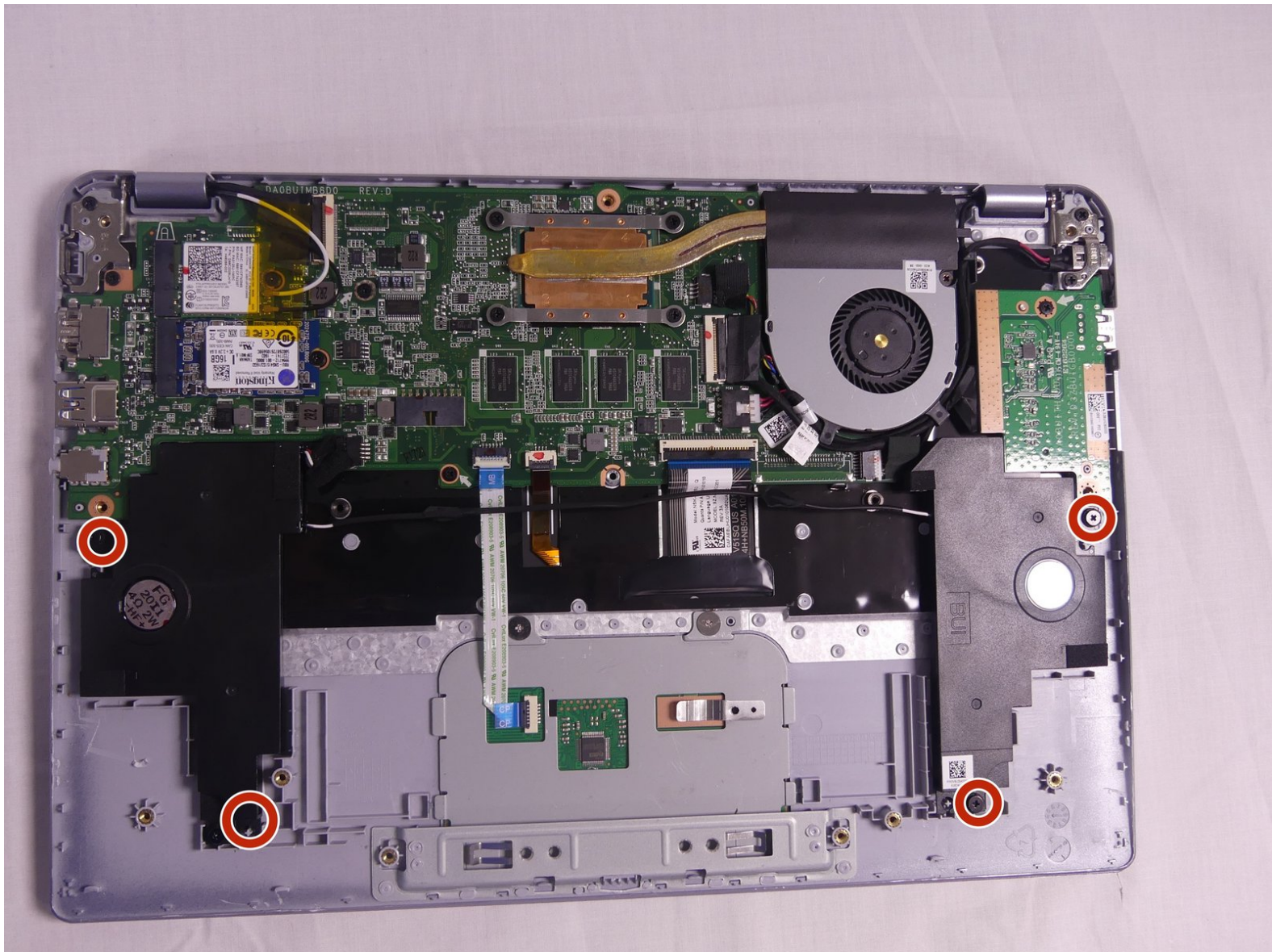




Toshiba CB35-C3300 Chromebook 2 Speakers

Removing the Speakers in a Toshiba CB35-C3300 Chromebook 2.

Written By: Mehdi Mohammadi



INTRODUCTION

The only hard thing about the guide is making sure the wire does not get in the way!



TOOLS:

- [Phillips #1 Screwdriver](#) (1)
 - [iFixit Opening Tools](#) (1)
 - [Spudger](#) (1)
-

Step 1 — Back Cover



- Remove the 2 rubber foot pads from the bottom (opposite the hinge) with the small Plastic Opening tool.

Step 2



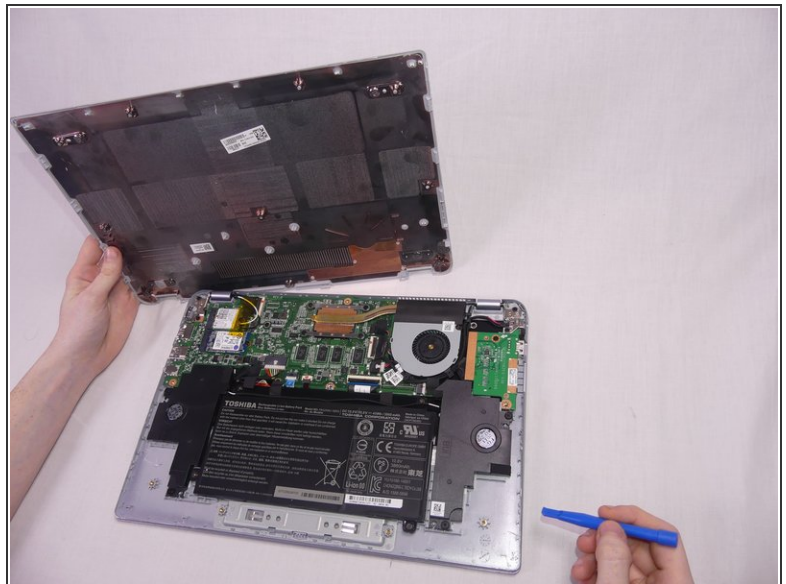
- Remove the 10 7.1 mm screws using Phillips #1 screwdriver.

Step 3



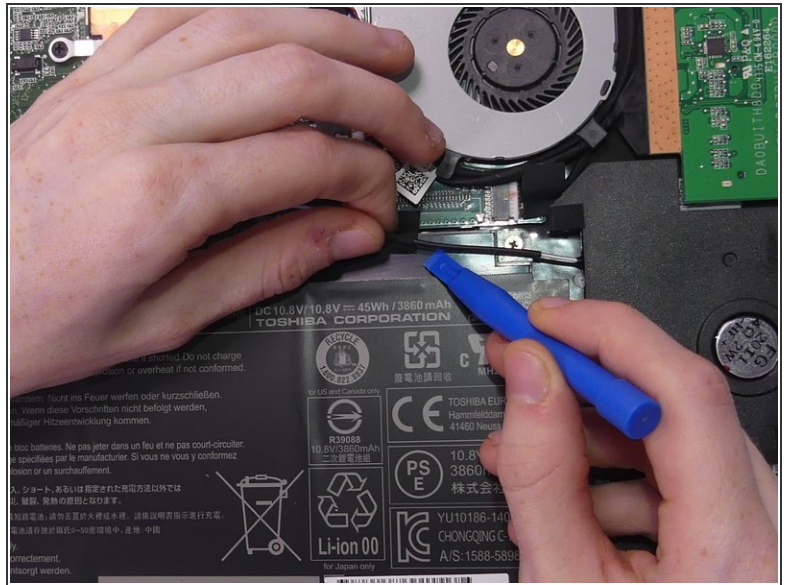
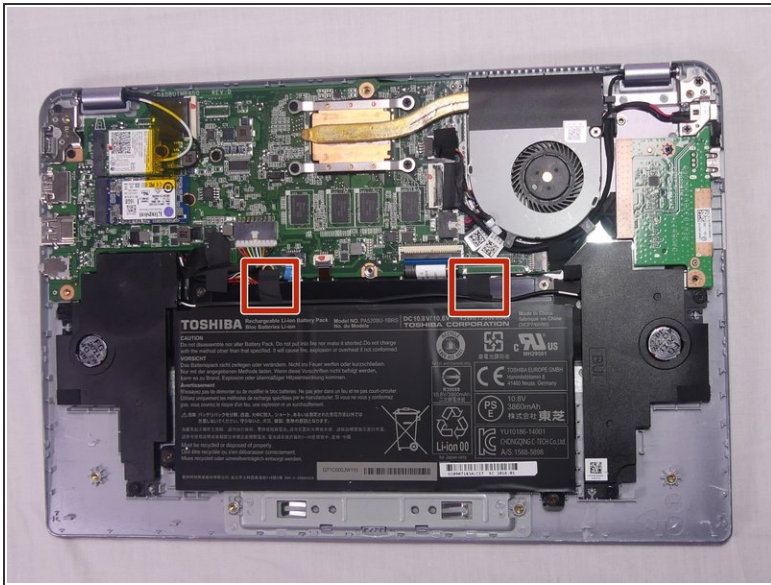
- Loosen the back cover by using a plastic opening tool all the way around the device.
- ⓘ There are areas all along the sides of the device that help aid in this.
- ⚠ Be careful when prying, and go slow. The silver plastic frame around the dull gray plastic bottom is fragile and easily dented from prying pressure.

Step 4



- Remove the back cover by gently lifting up on one side of the device.
- ⓘ The easiest side to lift up on is the one with the removed rubber foot pads.

Step 5 — Battery



- Remove the tape holding the speaker wire to the battery on both sides using a small opening tool.

Step 6



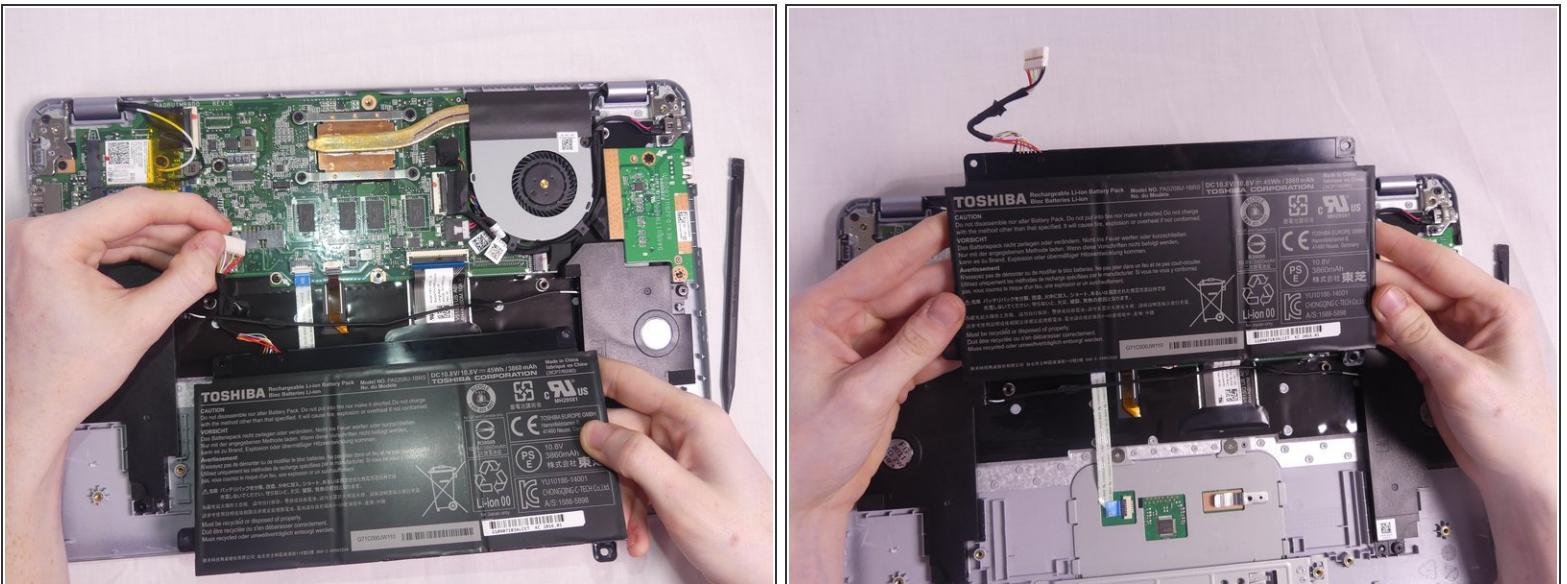
- Remove the 4 Phillips 3.2 mm screws holding the battery in place, with the Phillips #1 screwdriver.

Step 7



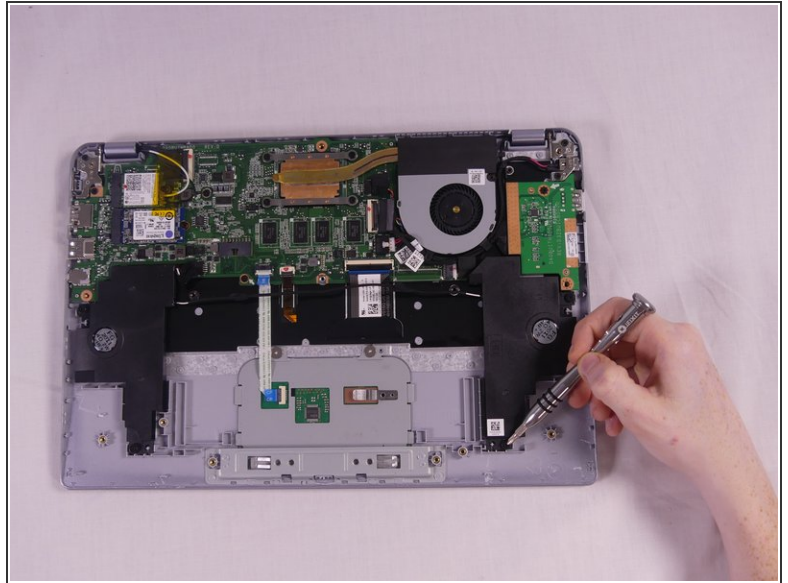
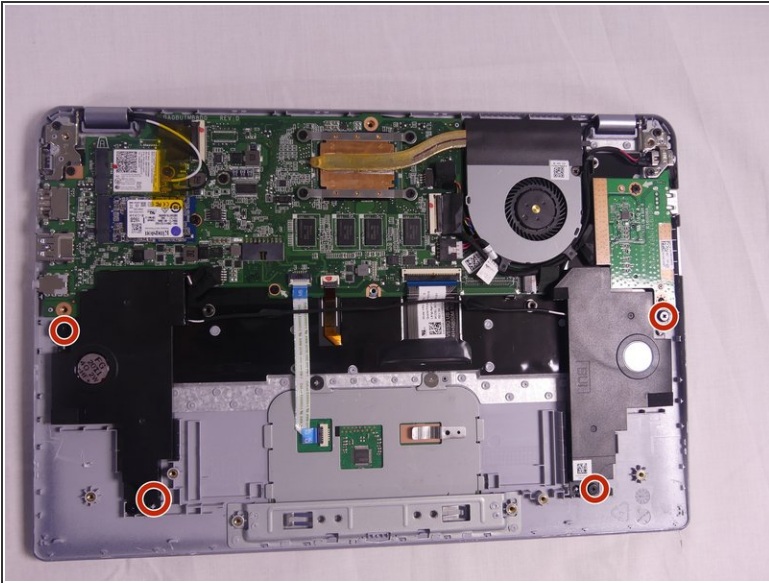
- To disconnect the wire from the motherboard, gently press down with the flat end of Spudger and pull on the wire.
- ① Gently shaking the wire from left to right helps with the wire removal

Step 8



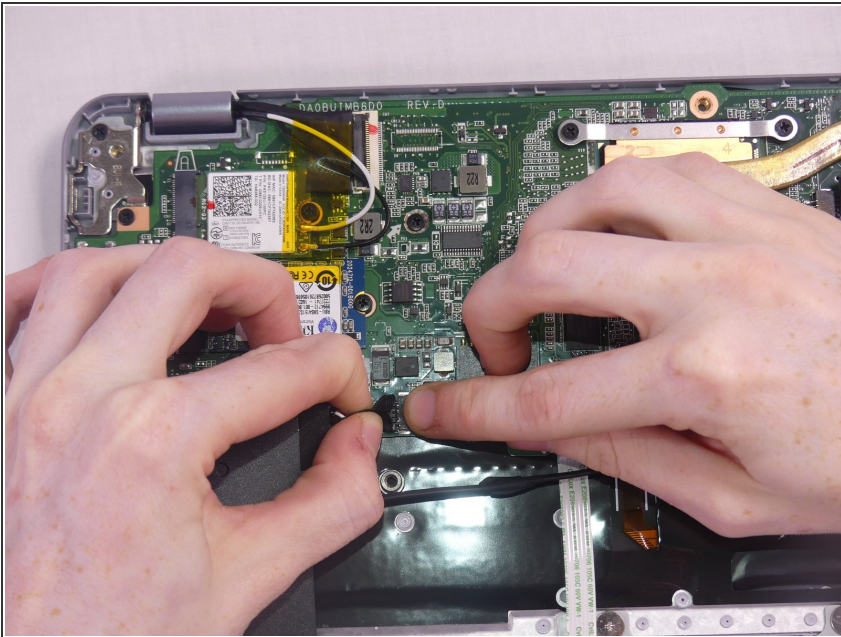
- Remove the battery by gently pulling on the bottom corners.
- ⚠ Be careful to move the battery's wire under the speaker's wire.

Step 9 — Speakers



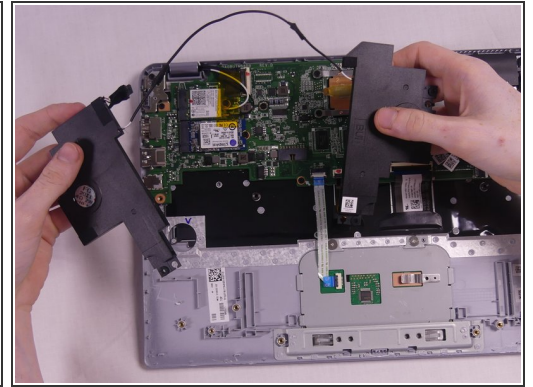
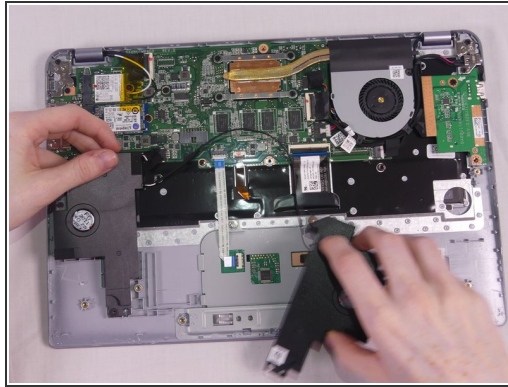
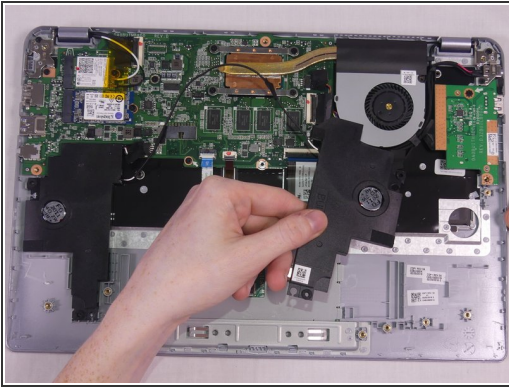
- Remove the 4 Phillip 6.3 mm screws from both the right and left speakers using Phillips 1 screwdriver.

Step 10



- Gently remove wire from the motherboard by pulling it out of the connector socket.

Step 11



- Remove the right and left speaker by lifting them up.

To reassemble your device, follow these instructions in reverse order.