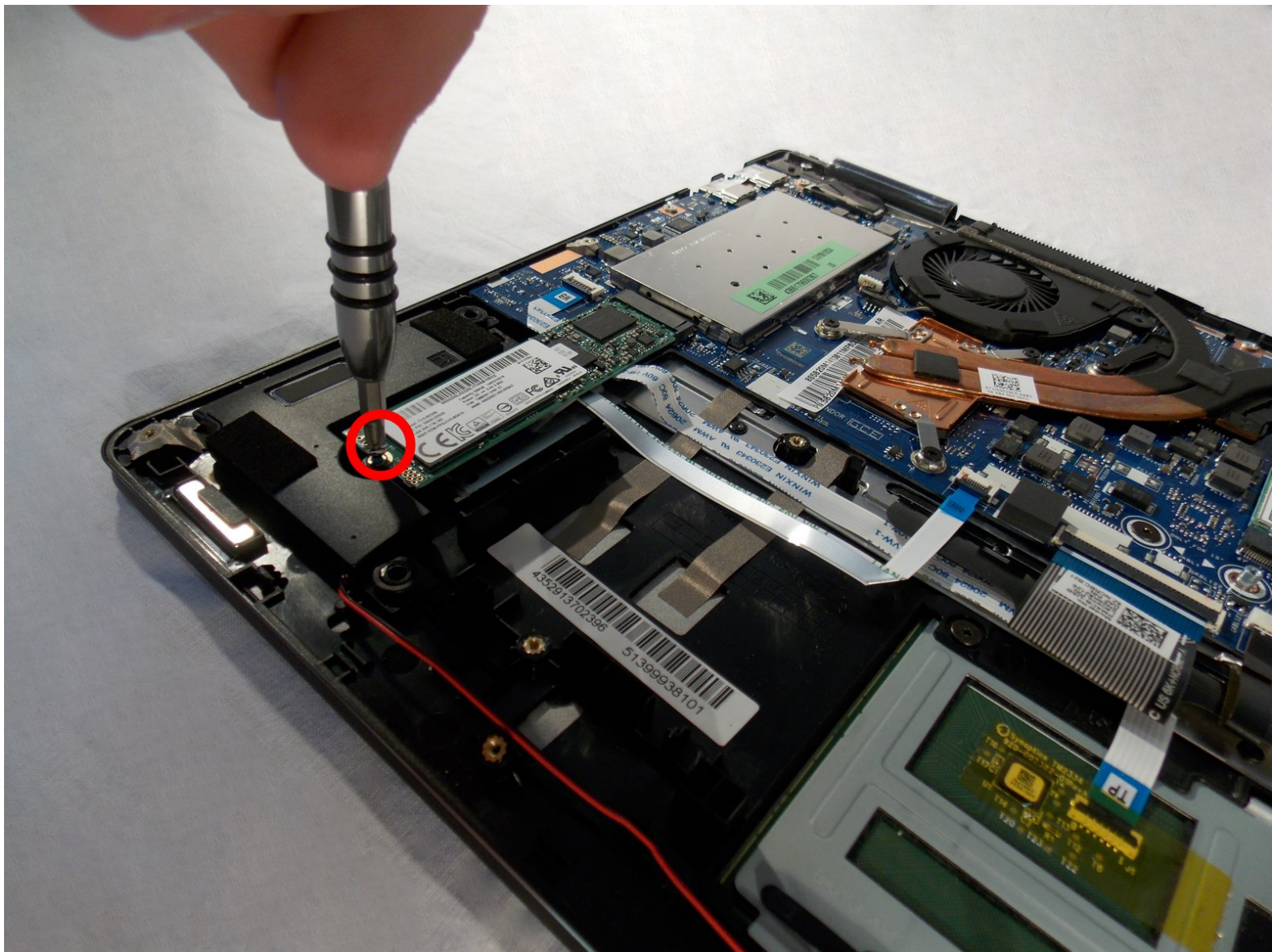




# Lenovo Yoga 710-15IKB Solid State Drive Replacement

This guide will demonstrate how to remove the solid state drive of a Lenovo Yoga 710-151KB. The battery should be removed first as an extra precaution.

Written By: Andrew Keenan



# INTRODUCTION

Solid state drives are known to fail occasionally, but this doesn't mean you have to do away with your laptop entirely. Replacing a bad drive is as simple as removing the battery and a single screw. Failure can be caused by heat, voltage fluctuation, and age.



## TOOLS:

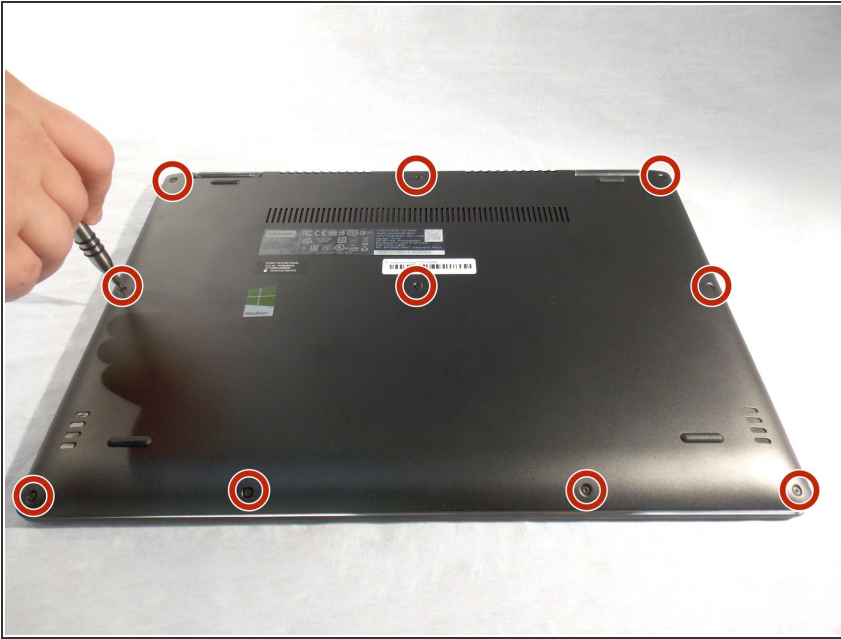
- [Phillips #00 Screwdriver](#) (1)
- [T5 Torx Screwdriver](#) (1)
- [iFixit Opening Tool](#) (1)
- [Tweezers](#) (1)
- [JIS #1](#) (1)



## PARTS:

- [1 TB SSD / Upgrade Bundle](#) (1)
- [250 GB SSD / Upgrade Bundle](#) (1)
- [500 GB SSD / Upgrade Bundle](#) (1)
- [2 TB SSD](#) (1)

## Step 1 — Battery



**i** Ensure your computer is completely OFF before starting this guide.

- Remove the ten 3.3 mm T5 screws from the base cover.

**!** The screws aren't all the same length. Be sure to keep the screws sorted as you work.

## Step 2



- Slide an opening tool between the base and back cover and work your way around the entire device to release the back cover.

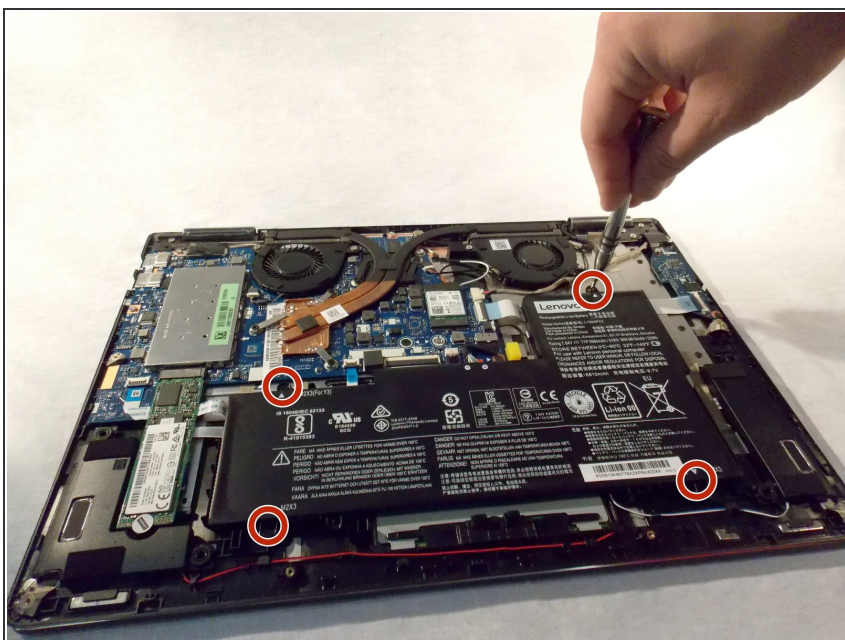


## Step 3



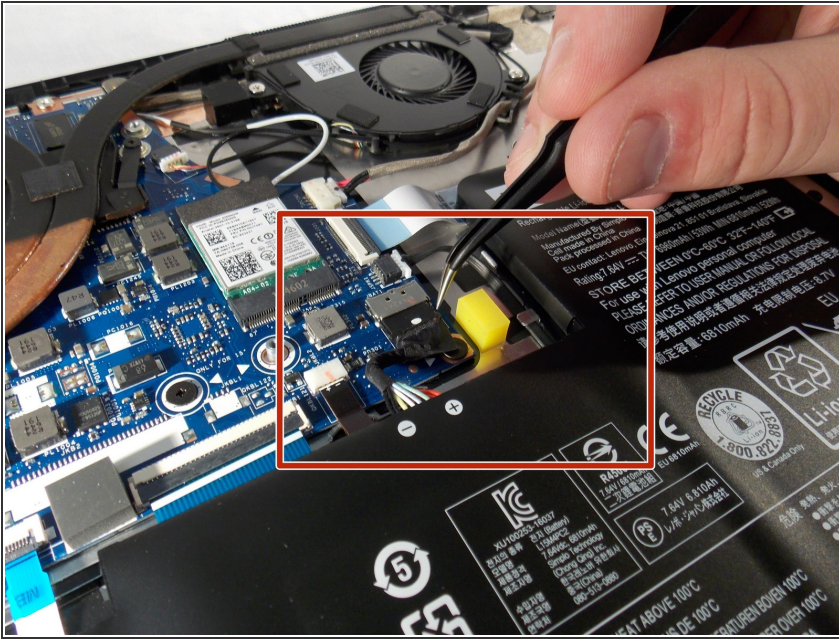
- Lift and remove the back cover.

## Step 4



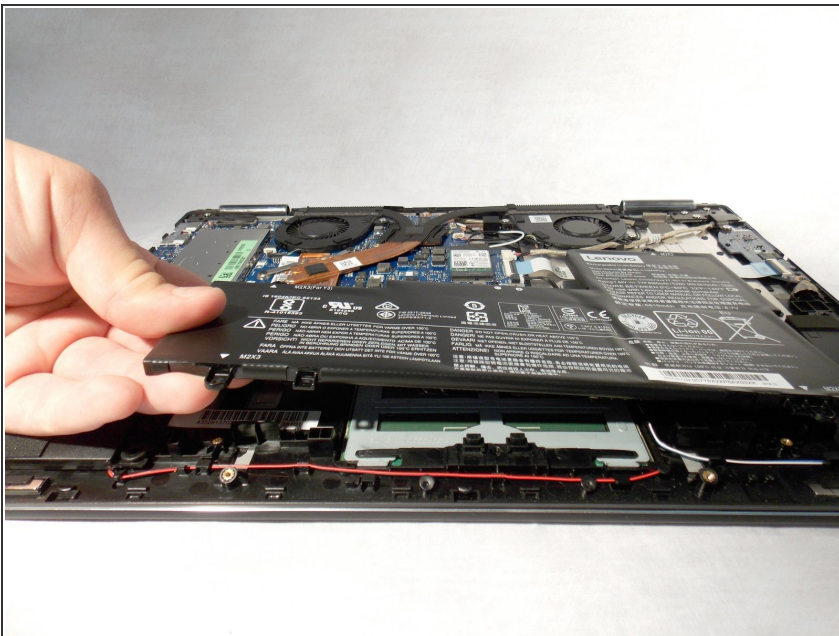
- Remove the four 3.5 mm screws around the battery using a Phillips #1 screwdriver.

## Step 5



- Disconnect the battery by pulling its cable away from the hinge with a pair of tweezers or your fingers.

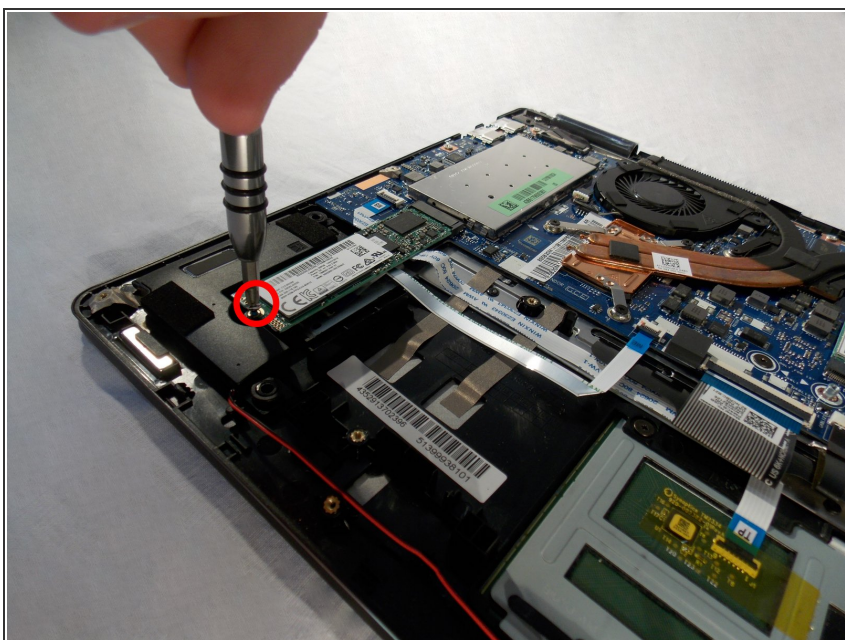
## Step 6



- Gently lift and remove the battery.

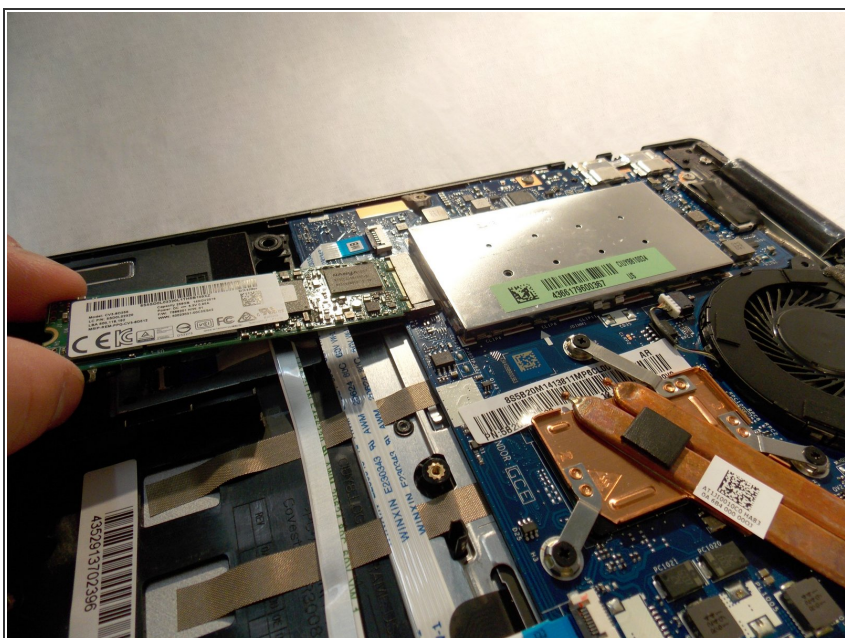


## Step 7 — Solid State Drive



- Remove the one JIS 1 screw holding the solid state drive in place.

## Step 8



- Gently pull the solid state drive out and up to remove it from the connector.

To reassemble your device, follow these instructions in reverse order.