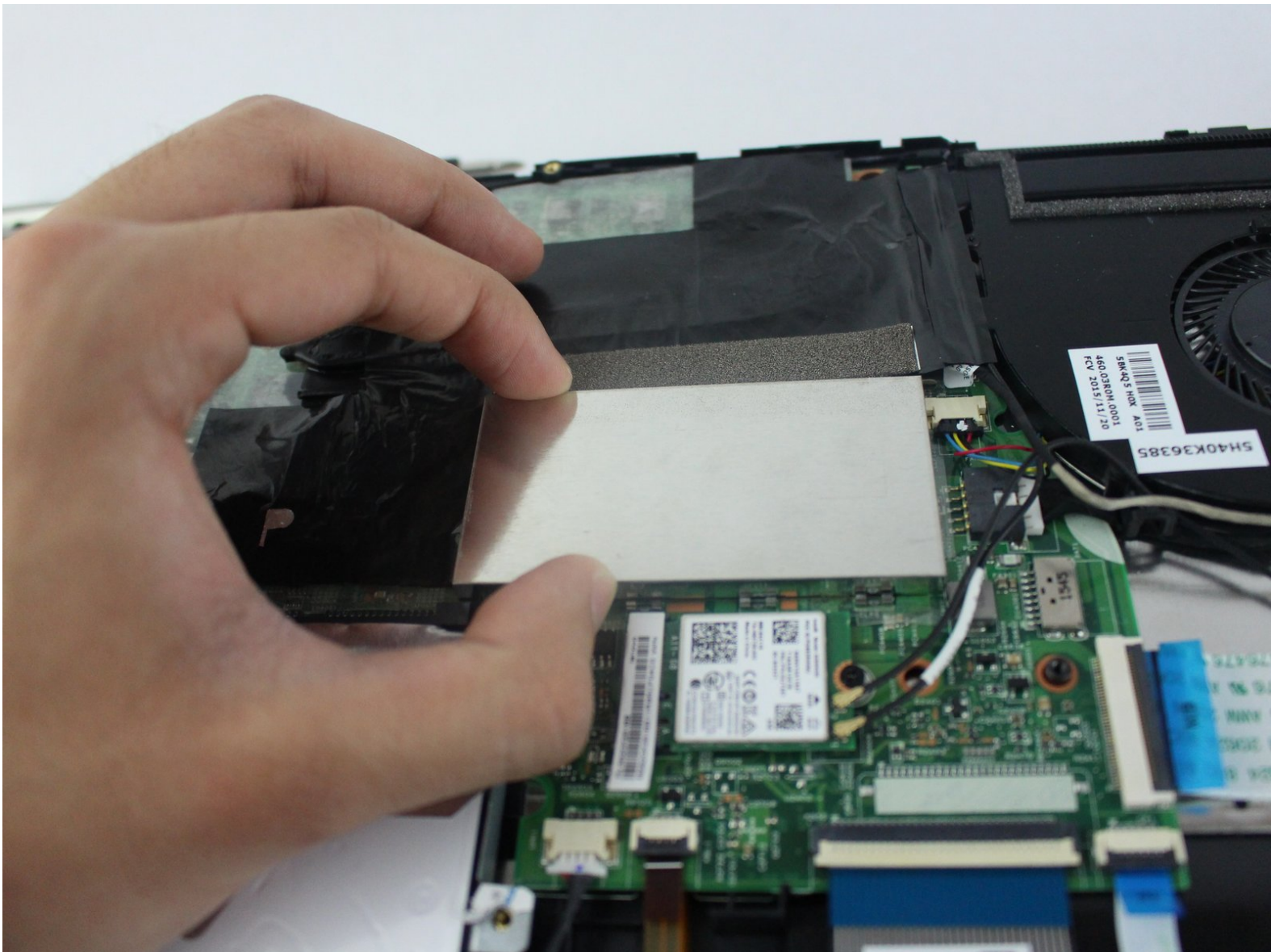




# Lenovo Edge 2-1580 RAM Replacement

This guide describes the steps to replacing the Lenovo Edge 2-1580 8GB DDR3L RAM.

Written By: Julian Escallon



## INTRODUCTION

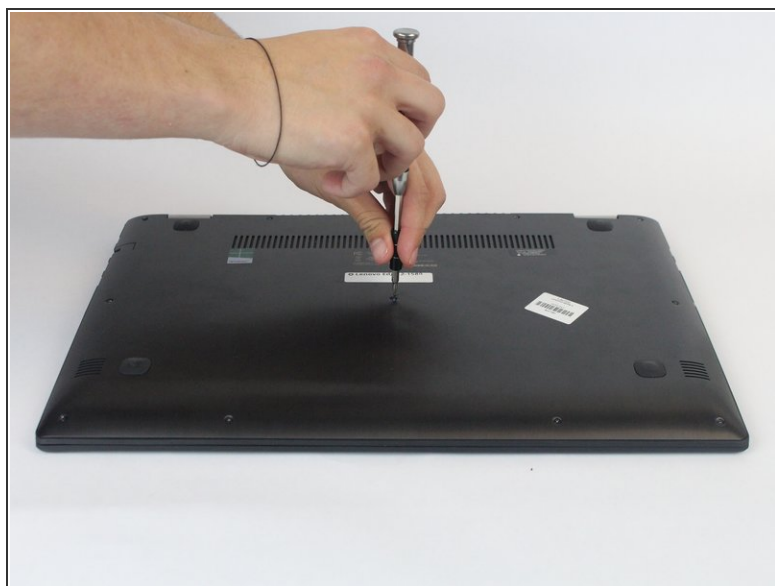
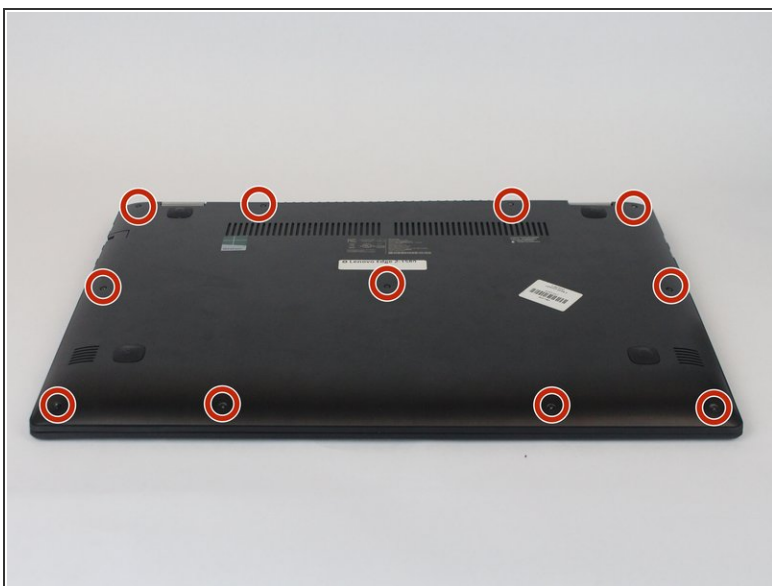
The guide will show you how to remove and replace the RAM module that comes with the laptop. Be sure the new replacement module is compatible with the motherboard.

---

### TOOLS:

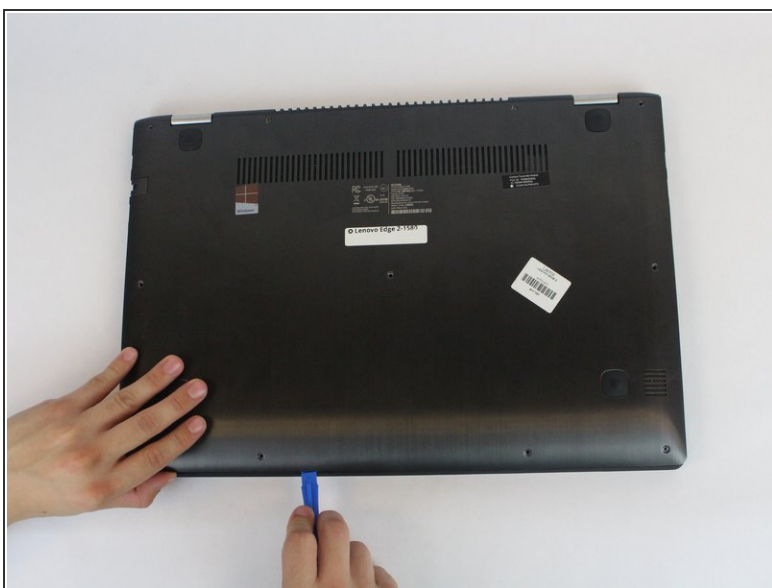
- [Phillips #0 Screwdriver](#) (1)
  - [iFixit Opening Tools](#) (1)
-

## Step 1 — Battery



- Using the Phillips #0 screwdriver, remove the (11) eleven 5.4 mm screws from the back panel.

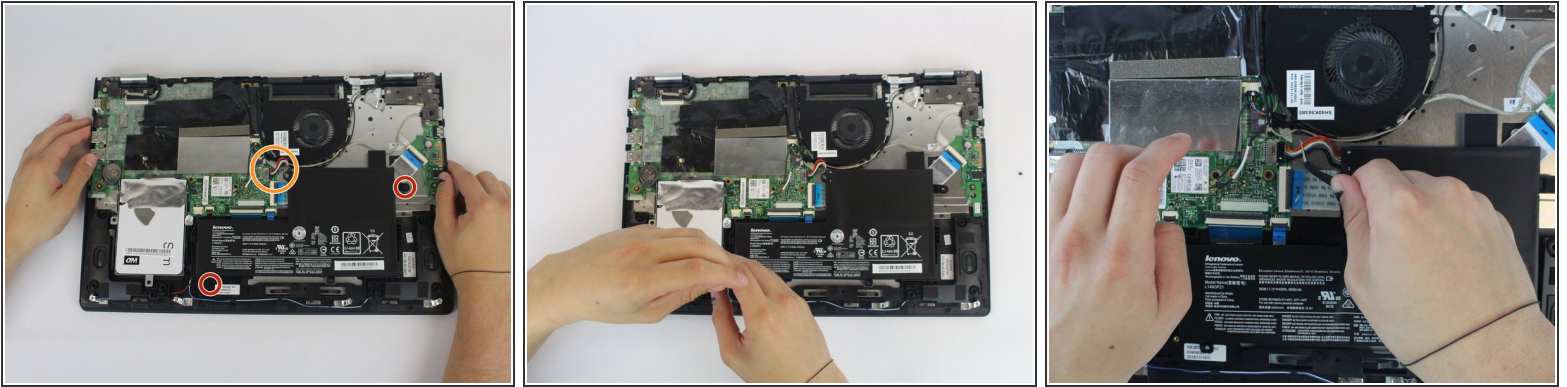
## Step 2



- Using a plastic opening tool, pull out the back panel from the laptop.

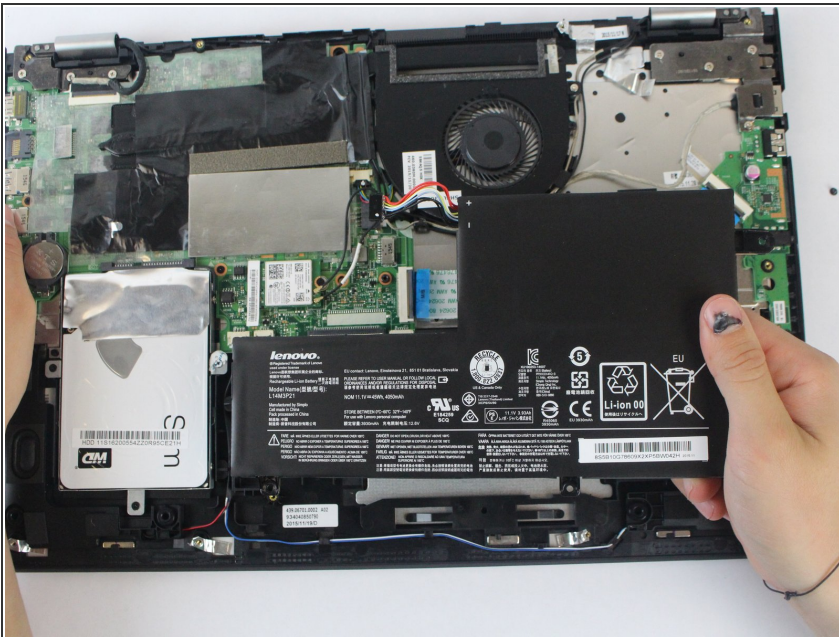


## Step 3



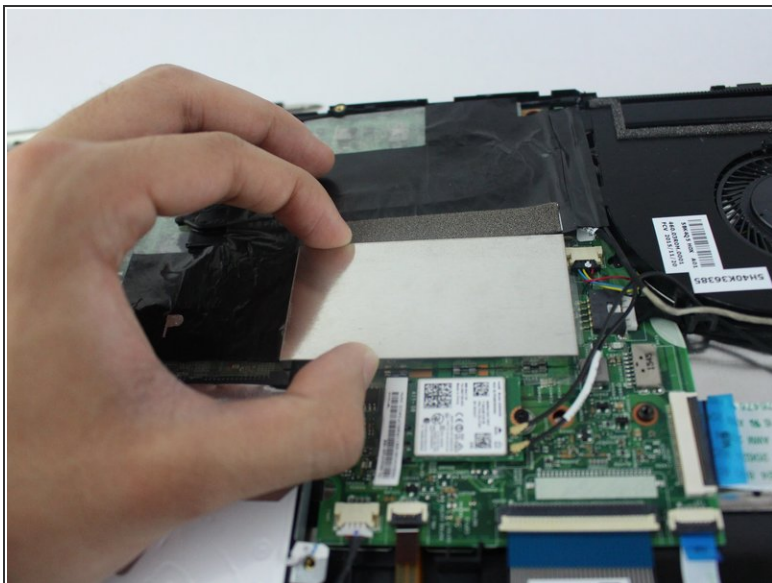
- Using the Phillips #0 screwdriver, remove the (2) 5.4 mm screws.
- Disconnect the battery connector from the motherboard.

## Step 4



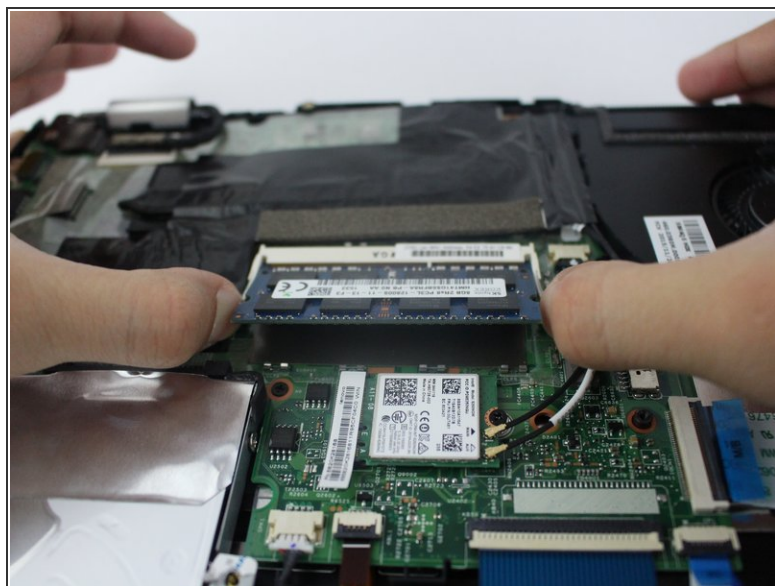
- Pull the battery outward and remove it from the rest of the laptop.

## Step 5 — RAM



- Remove the metallic RAM cover

## Step 6



- With both of your thumbs, gently pull both adjacent levers outwards. The RAM module will rise a bit.



## Step 7



- Grab the RAM module , and gently pull it out.

To reassemble your device, follow these instructions in reverse order.