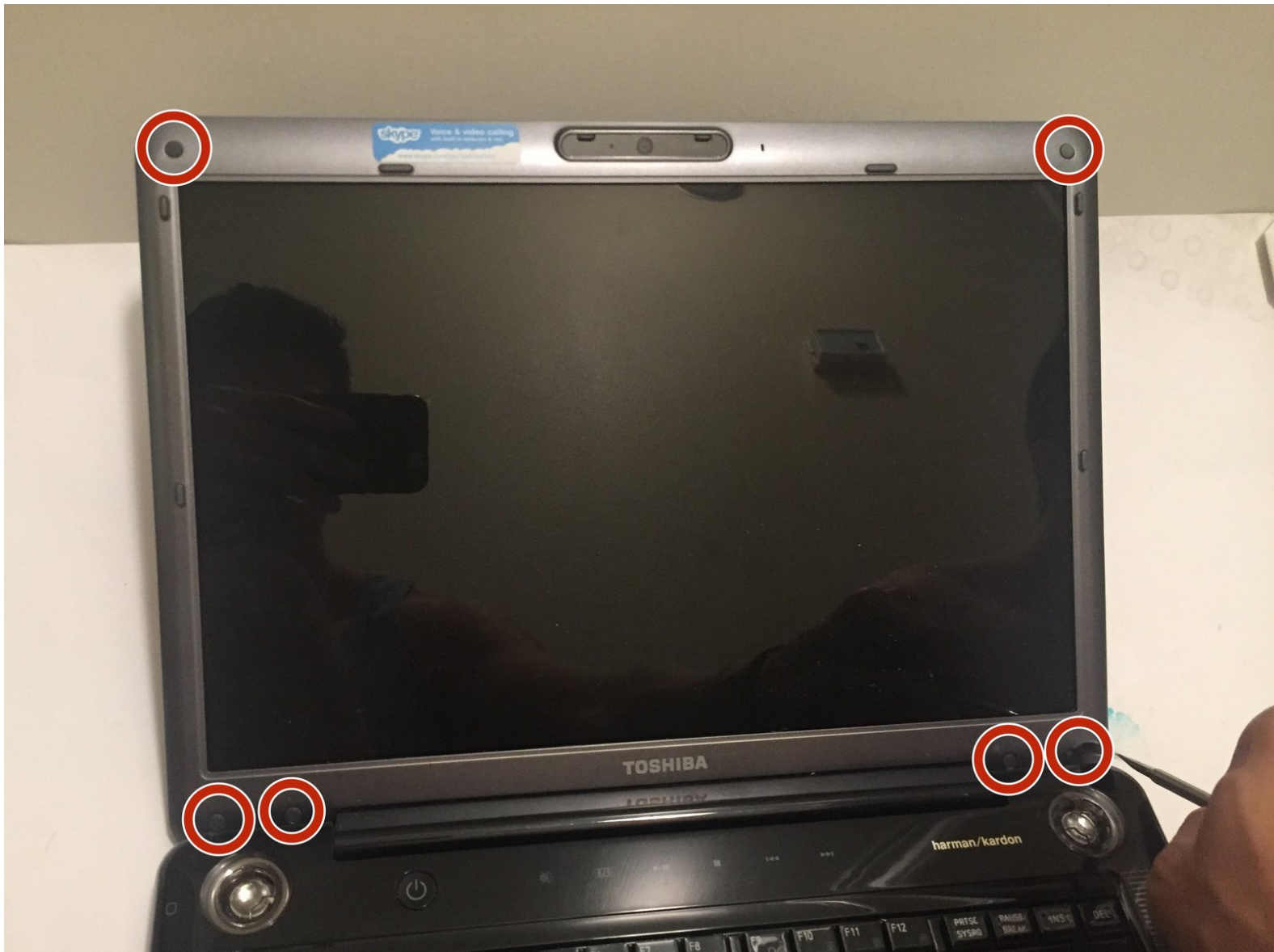




Toshiba Satellite A305-S6848 LCD Screen Replacement

Replace the your defective LCD Screen.

Written By: Joshua E Hong



INTRODUCTION

This guide teaches you how to replace the screen for the Toshiba Satellite A305-S6848



TOOLS:

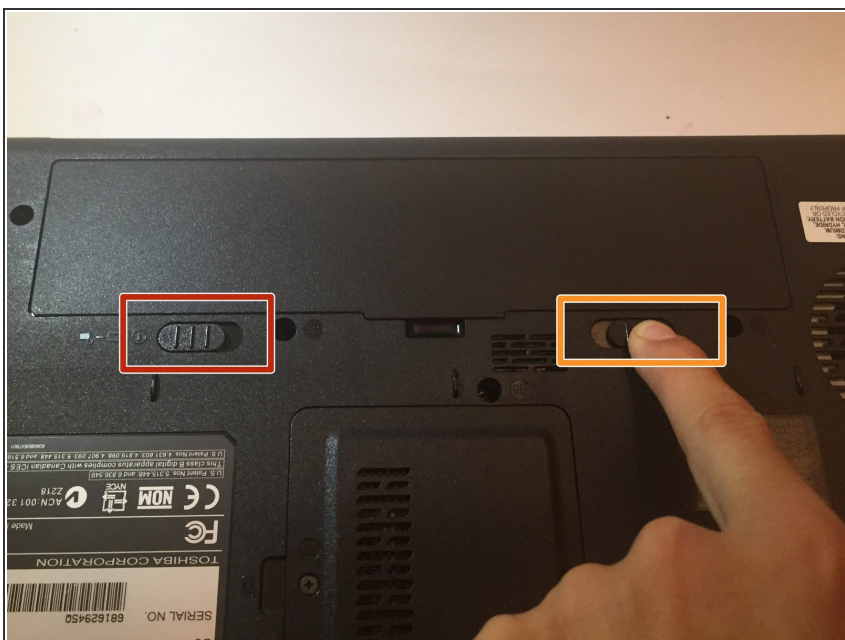
- [Metal Spudger](#) (1)
 - [Phillips #0 Screwdriver](#) (1)
-

Step 1 — Battery



- Close laptop and turn it upside down.

Step 2



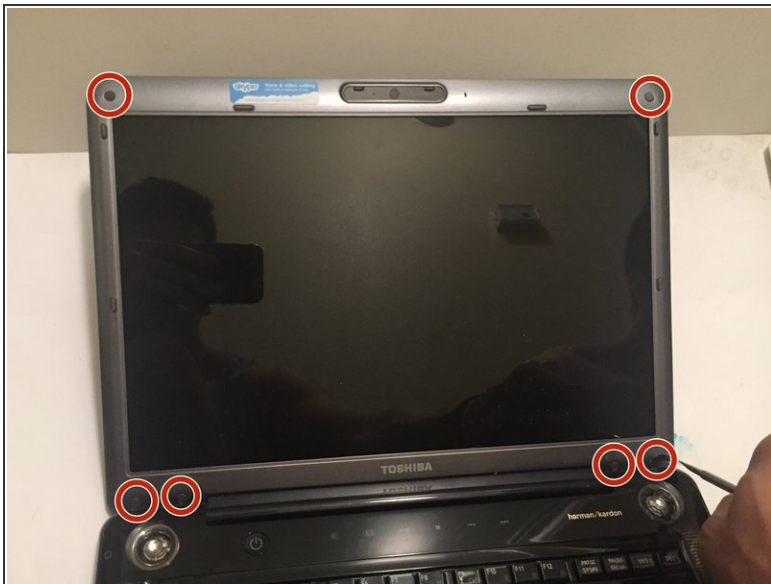
- Move the left locking hatch to the left.
- Hold the right spring latch to the right.

Step 3



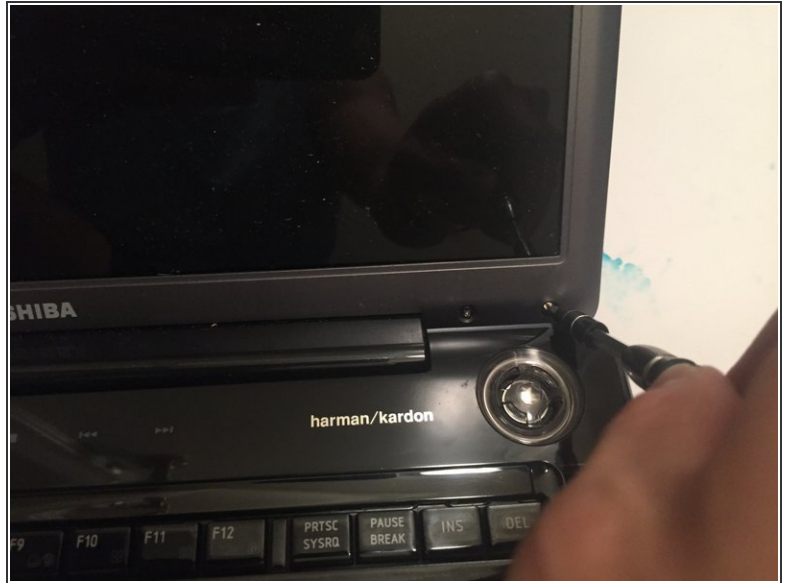
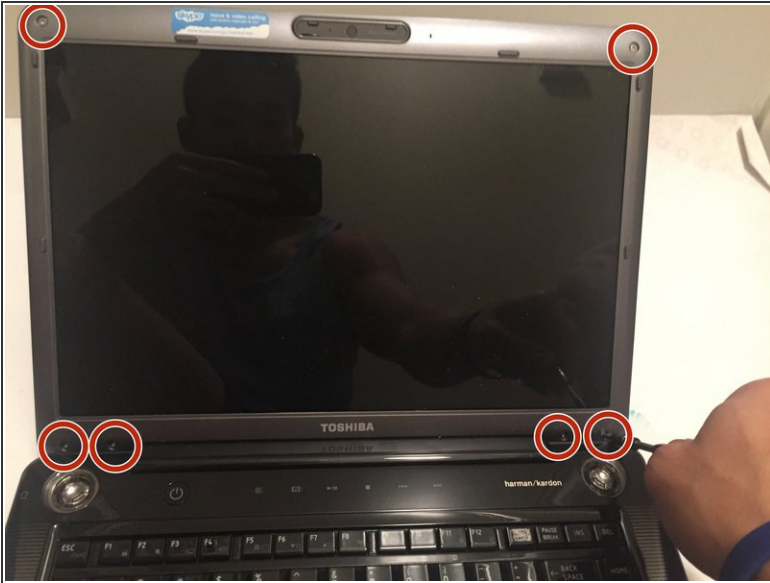
- Carefully remove the battery from the laptop.

Step 4 — LCD Screen



- Remove the 6 rubber tabs on the housing using the metal spudger.

Step 5



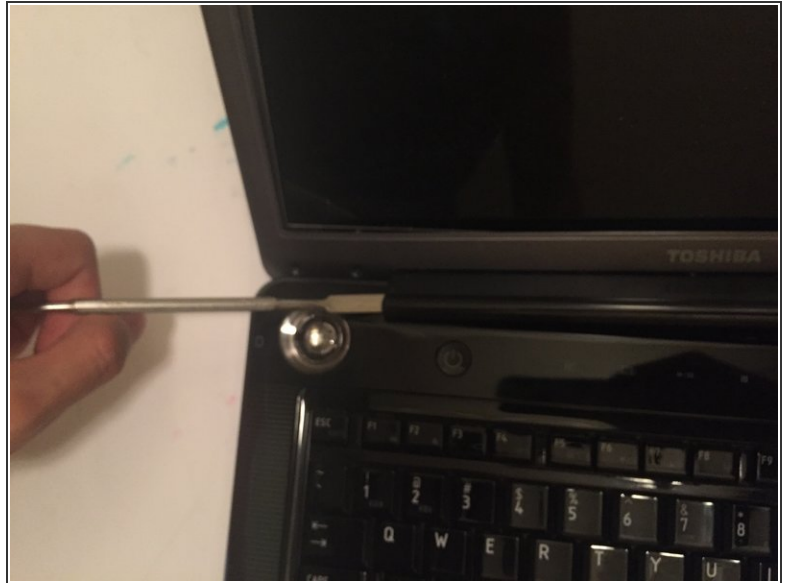
- Remove the six 5.8 mm screws using the Phillip's #0 screwdriver.

Step 6



- Pry out plastic housing on all sides.

Step 7



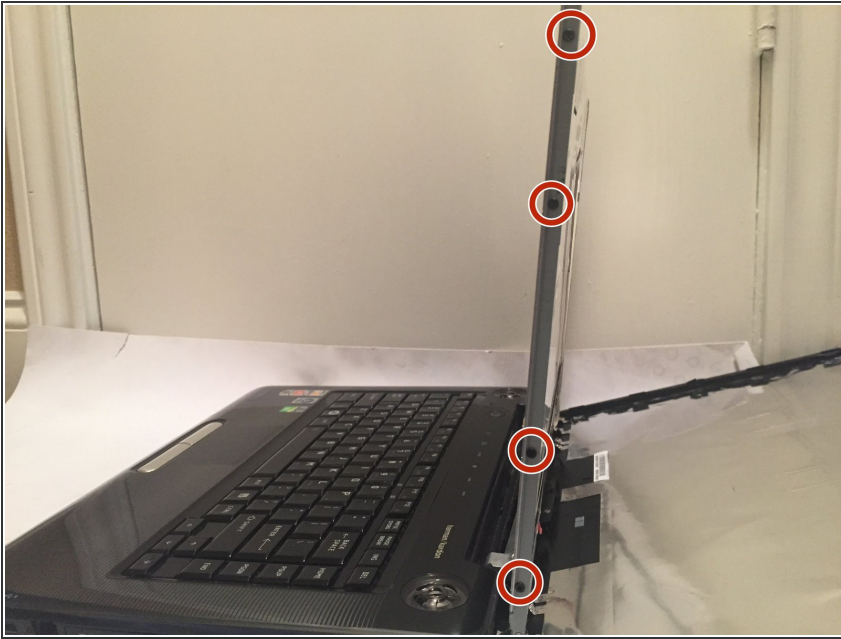
- Pry out the bottom left and right locking pieces of the plastic housing with the metal spudger.

Step 8



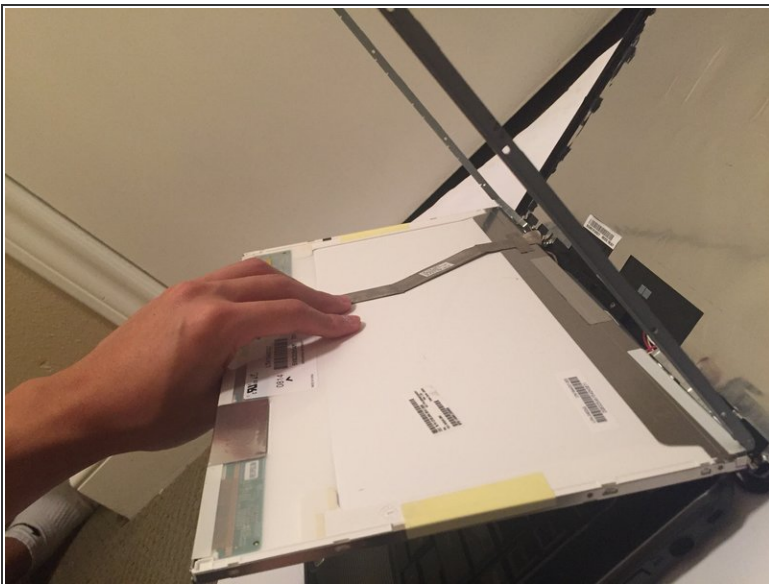
- Remove the four 5.8 mm screws using the Phillip's #0 screwdriver.

Step 9



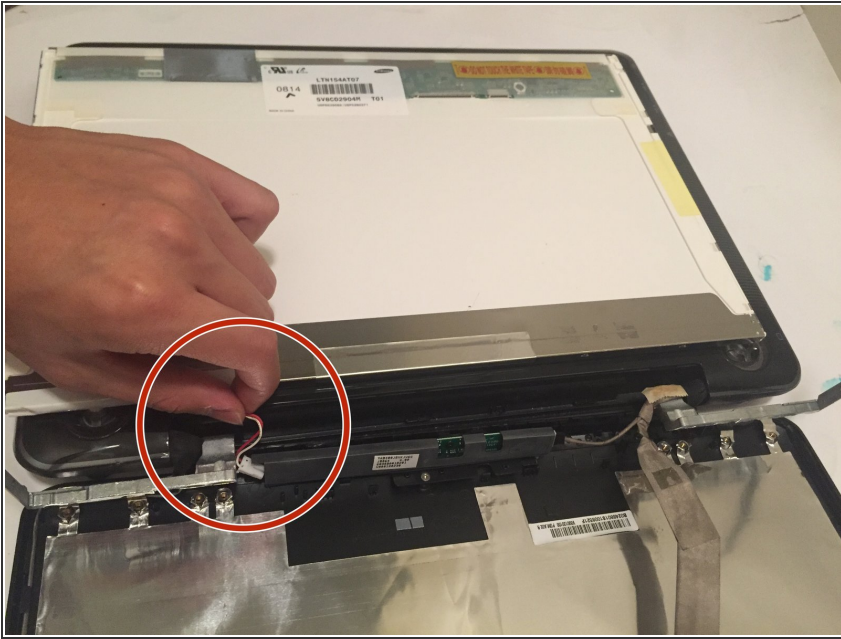
- Remove the eight 6.5 mm screws on the left and right sides of the screen using the Phillip's #0 screwdriver.

Step 10



- Pull the screen down.
- Pull off tape and take our video connector.

Step 11



- Remove cold cathode fluorescent light bulb connector.

To reassemble your device, follow these instructions in reverse order.