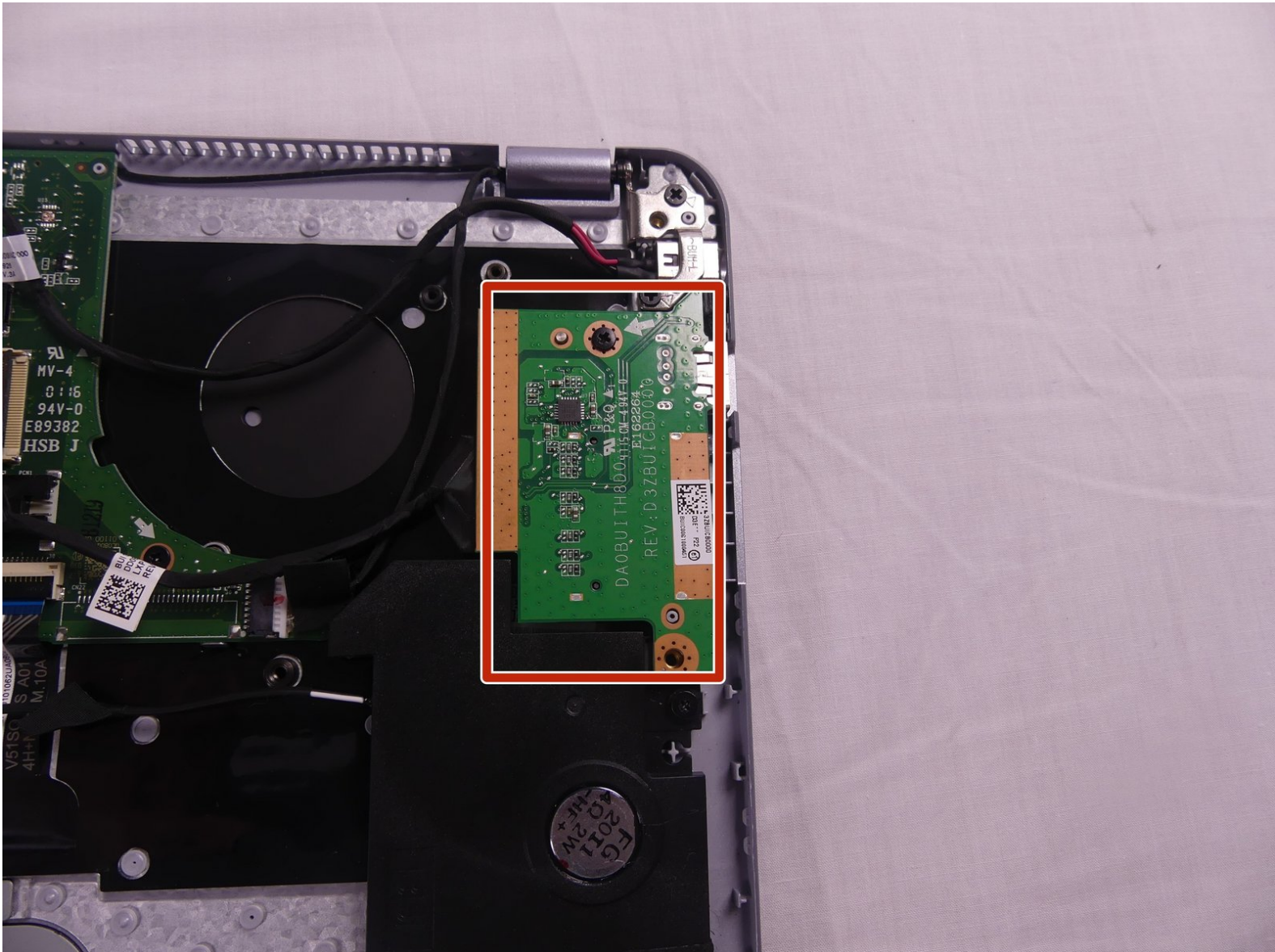




# Toshiba CB35-C3300 Chromebook 2 WiFi PCB Replacement

Removing the WIFI PCB from the Toshiba CB35- C3300 Chromebook 2.

Written By: Jillian Thomas



---

## INTRODUCTION

The WIFI PCB is how your device is able to connect to the internet through an antenna. This may need replacement if your device refuses to connect to working WIFI when other devices can connect.



### TOOLS:

- [Phillips #1 Screwdriver](#) (1)
  - [iFixit Opening Tools](#) (1)
  - [Spudger](#) (1)
-

## Step 1 — Back Cover



- Remove the 2 rubber foot pads from the bottom (opposite the hinge) with the small Plastic Opening tool.

## Step 2



- Remove the 10 7.1 mm screws using Phillips #1 screwdriver.



## Step 3



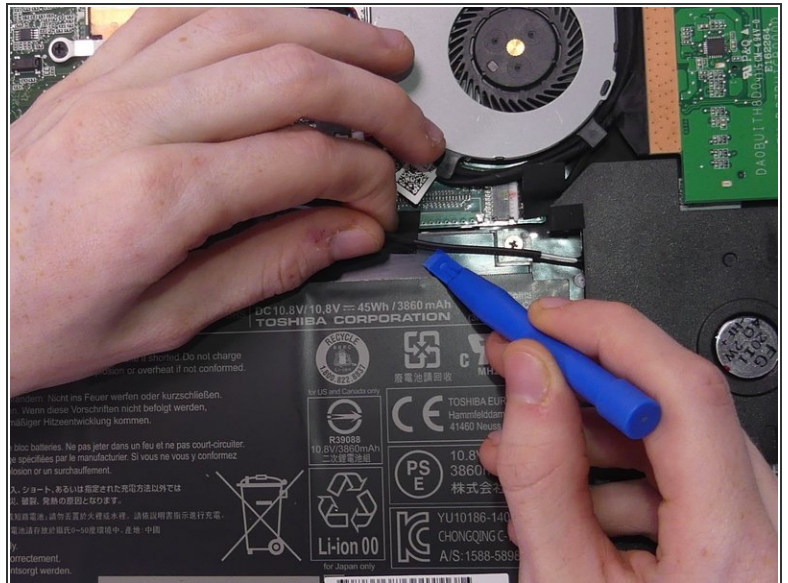
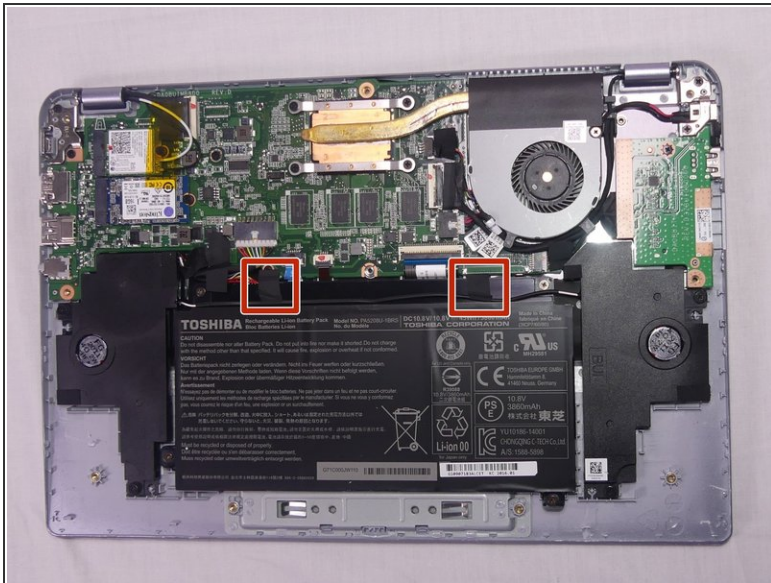
- Loosen the back cover by using a plastic opening tool all the way around the device.
- ⓘ There are areas all along the sides of the device that help aid in this.
- ⚠ Be careful when prying, and go slow. The silver plastic frame around the dull gray plastic bottom is fragile and easily dented from prying pressure.

## Step 4



- Remove the back cover by gently lifting up on one side of the device.
- ⓘ The easiest side to lift up on is the one with the removed rubber foot pads.

## Step 5 — Battery



- Remove the tape holding the speaker wire to the battery on both sides using a small opening tool.

## Step 6



- Remove the 4 Phillips 3.2 mm screws holding the battery in place, with the Phillips #1 screwdriver.

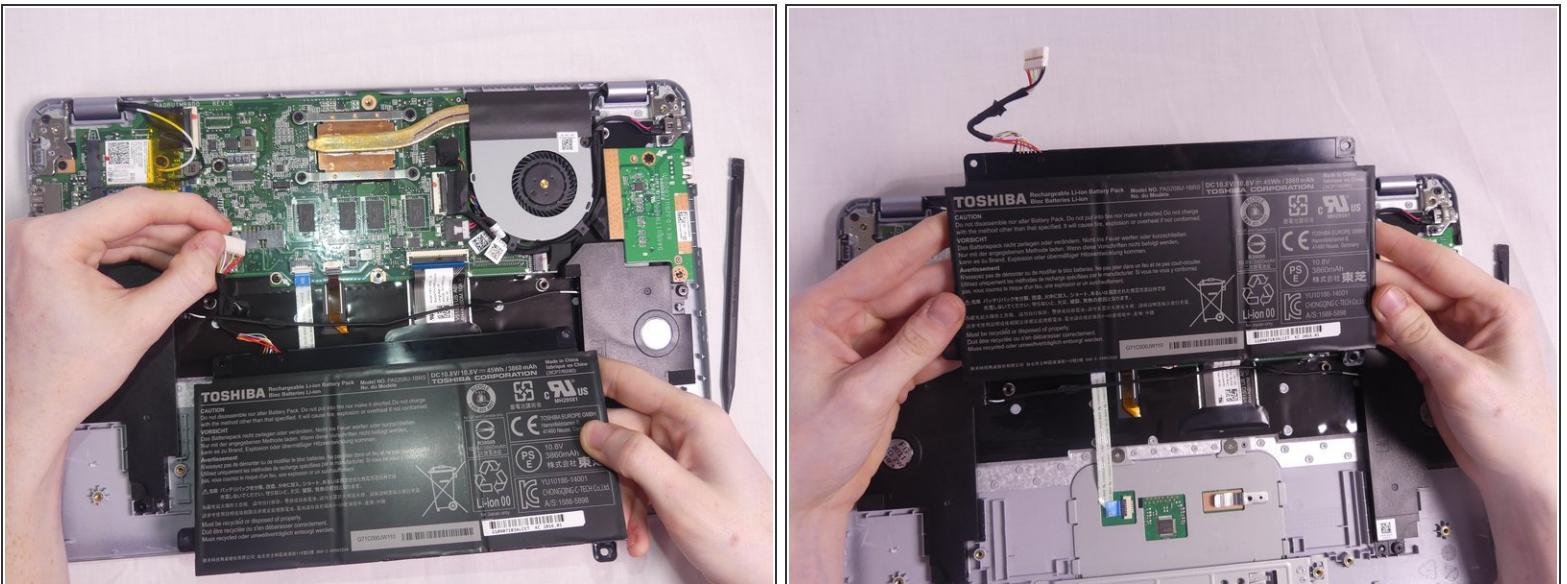


## Step 7



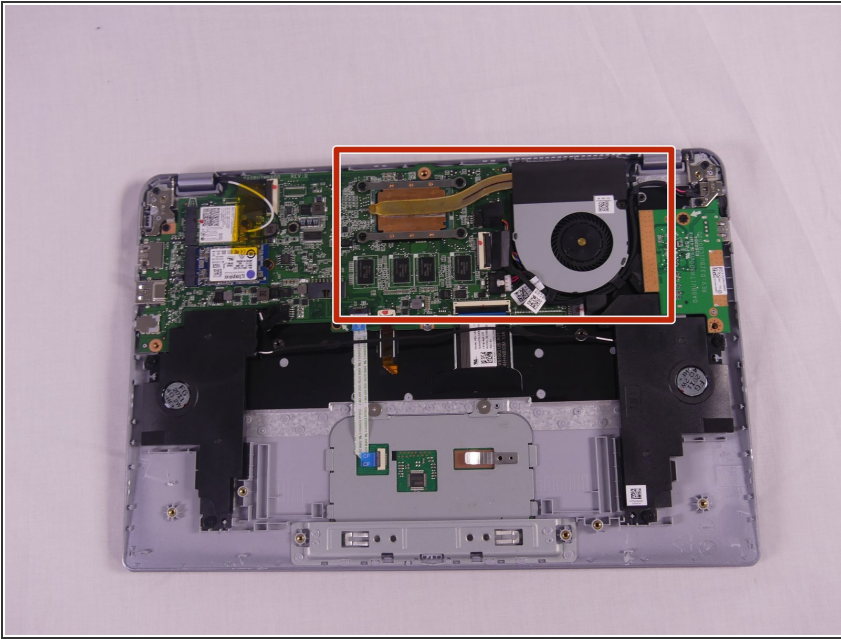
- To disconnect the wire from the motherboard, gently press down with the flat end of Spudger and pull on the wire.
- ① Gently shaking the wire from left to right helps with the wire removal

## Step 8



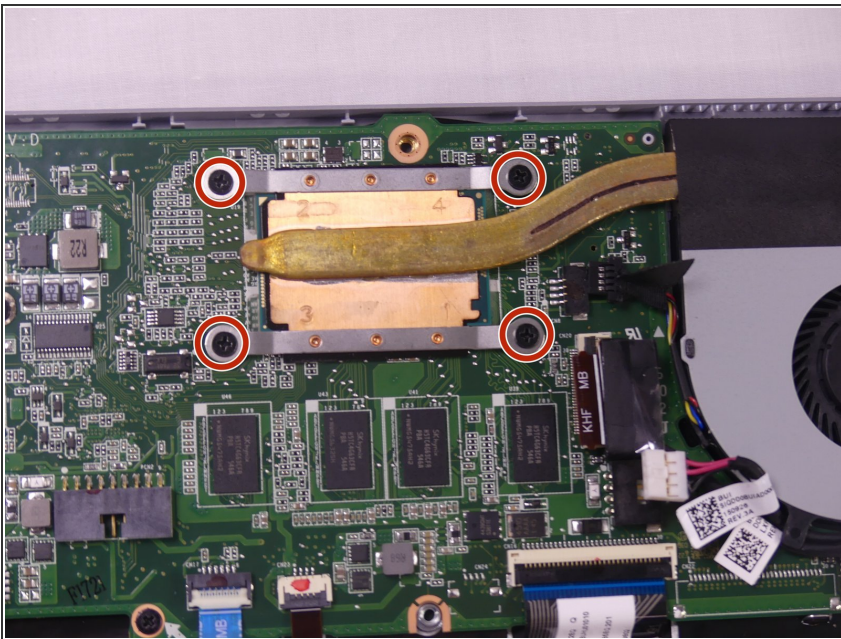
- Remove the battery by gently pulling on the bottom corners.
- ⚠ Be careful to move the battery's wire under the speaker's wire.

## Step 9 — Fan



- Locate the fan

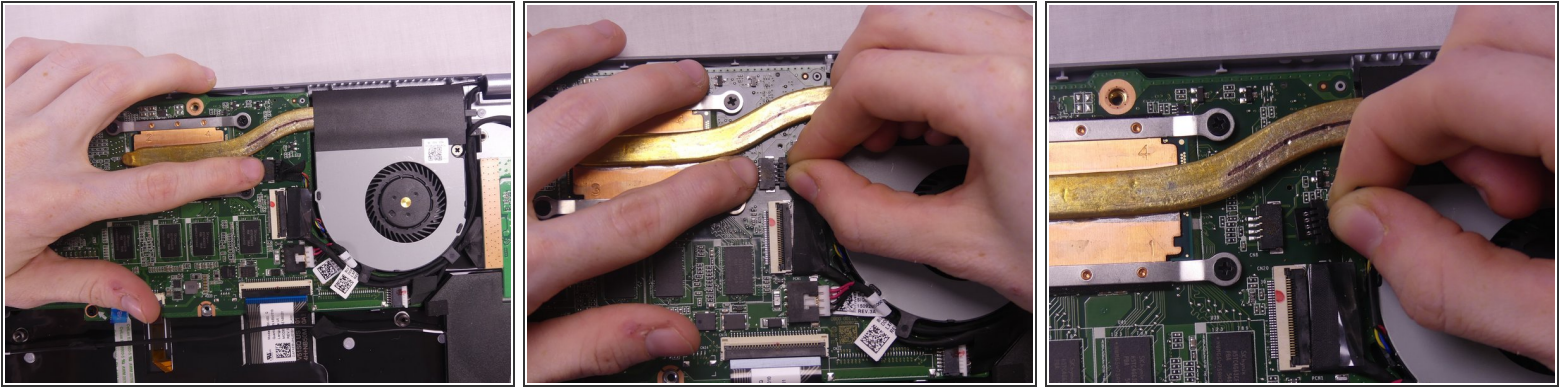
## Step 10



- Unscrew the 4 Phillip screws using a Phillips # 1 Screwdriver.
- ⓘ These screws only loosen partially, they do not disconnect.

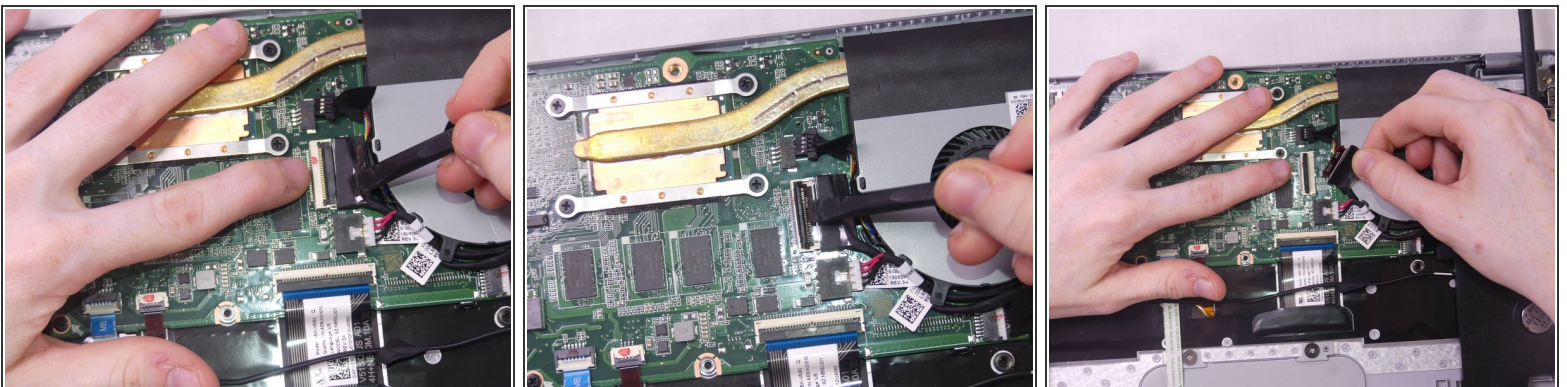


## Step 11



- The top wire is the fan's wire. Remove it by pulling it from the motherboard.

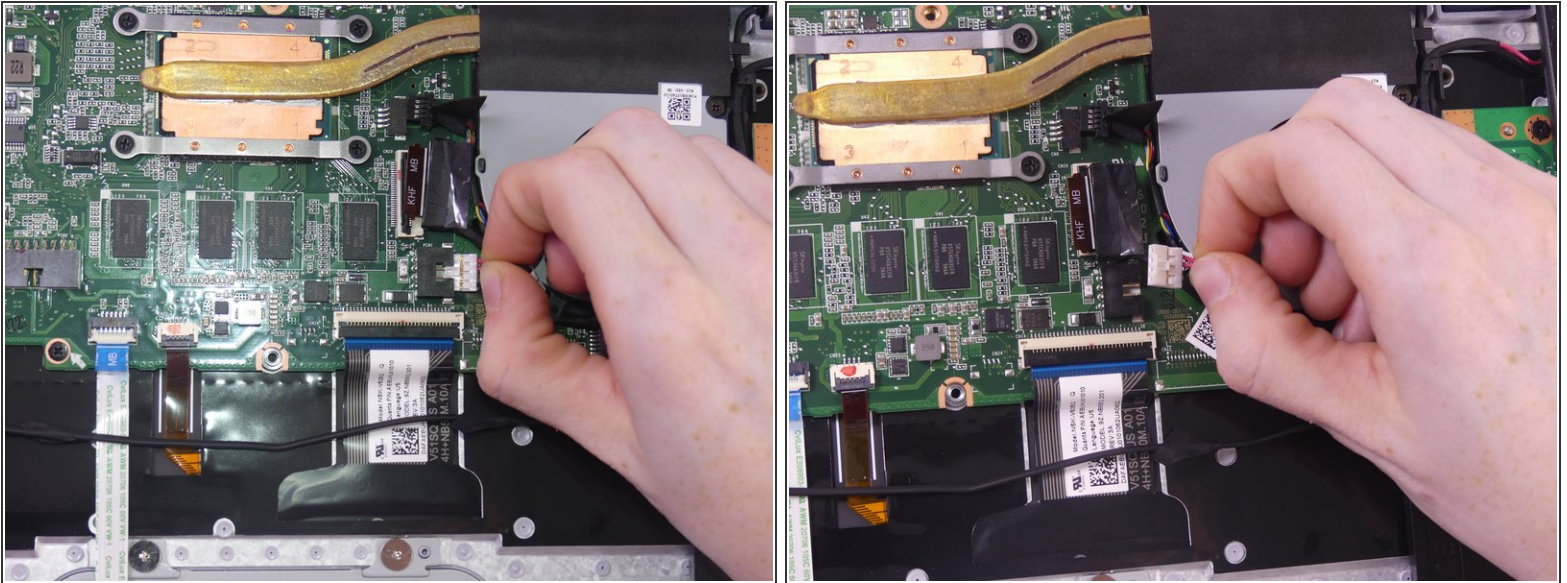
## Step 12



- To remove the Wifi PCB wire lift up the hinged flap with your finger or with the aid of the spudger tool.
- After the flap is lifted, pull the wire up out of the connector socket.

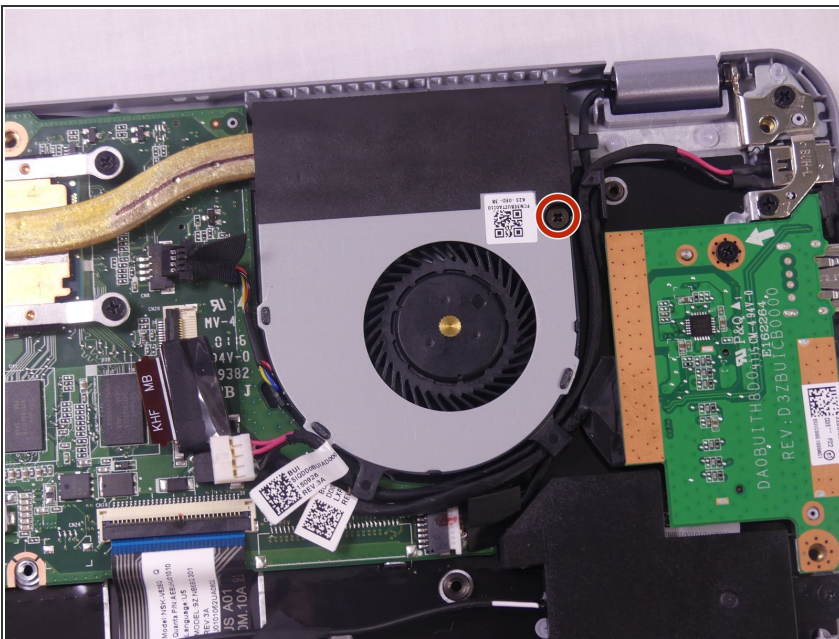


## Step 13



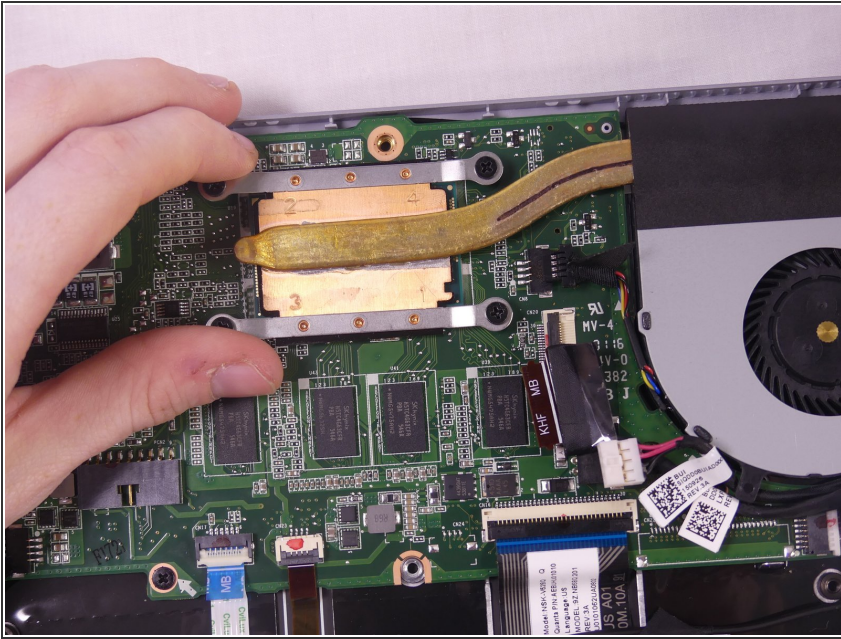
- Remove the headphone jack wire by pulling it out of the connector socket.

## Step 14



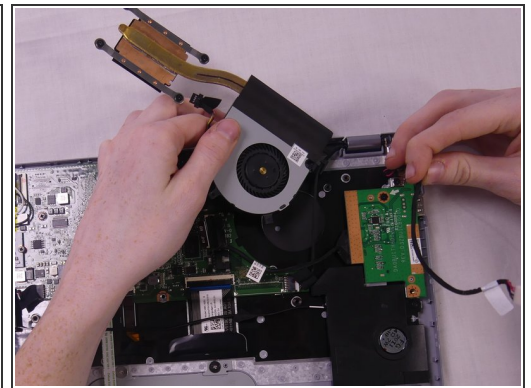
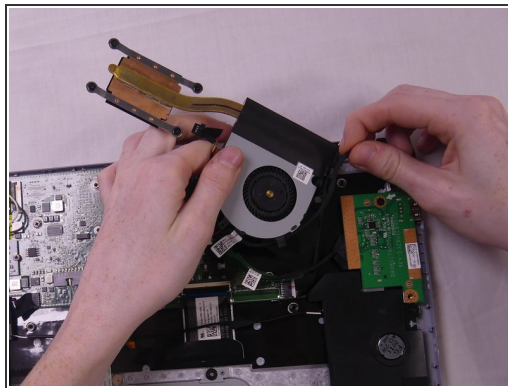
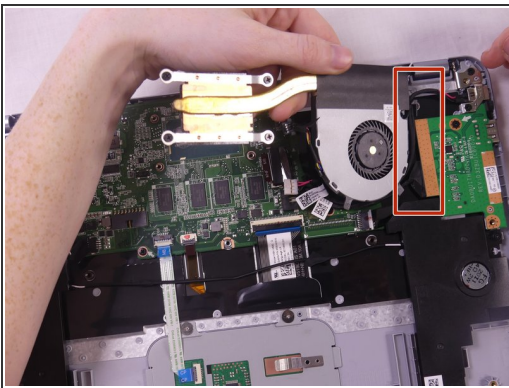
- Remove the Phillip 3.6 mm screw from the fan using a Phillips #1 screwdriver.

## Step 15



- Lift up on the metal plate that hold the screws to start removing the fan.

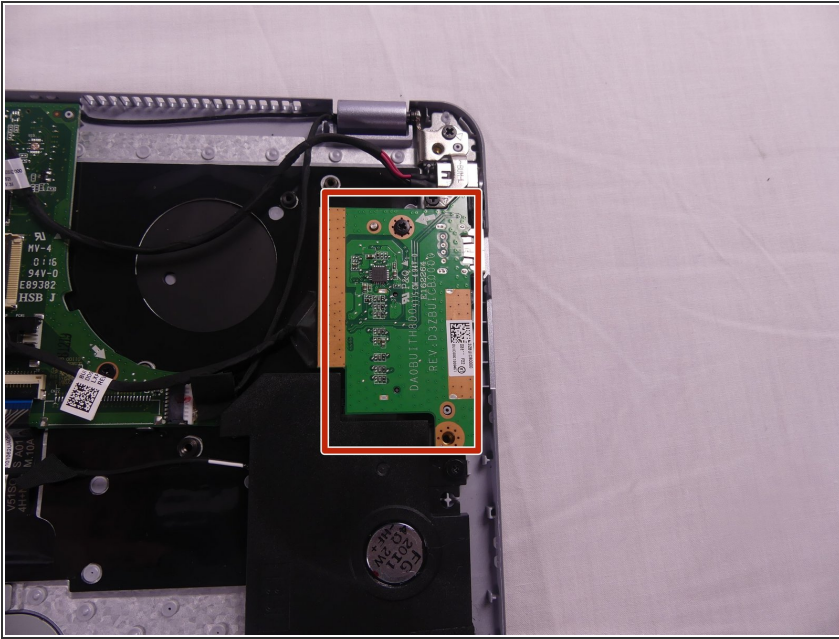
## Step 16



- Once lifted, you will notice that there are two wires tucked under plastic tunnels on the right side of the fan. Remove these wires.
- ❗ These wires require you to gently pull them out of there tunnel.
- Once the wires are removed the fan should be removed entirely.

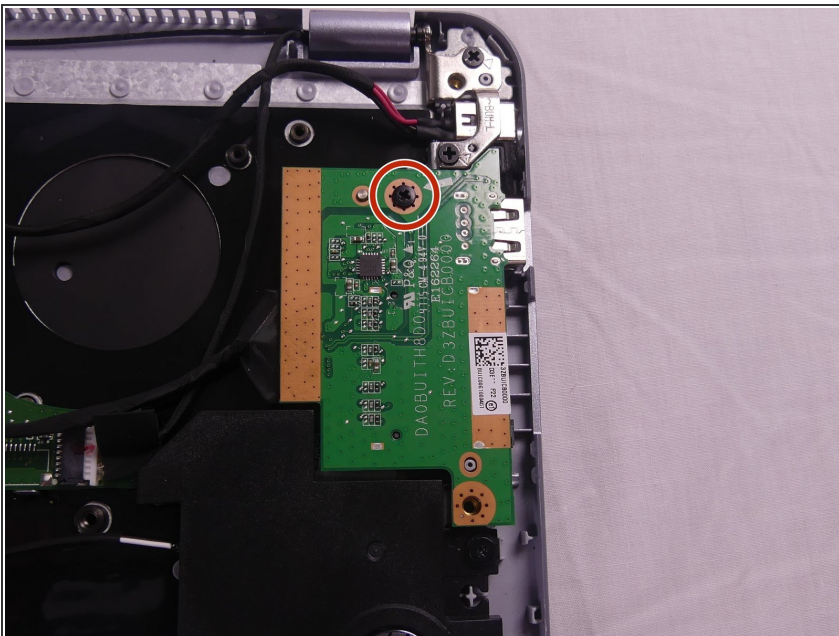


## Step 17 — WiFi PCB



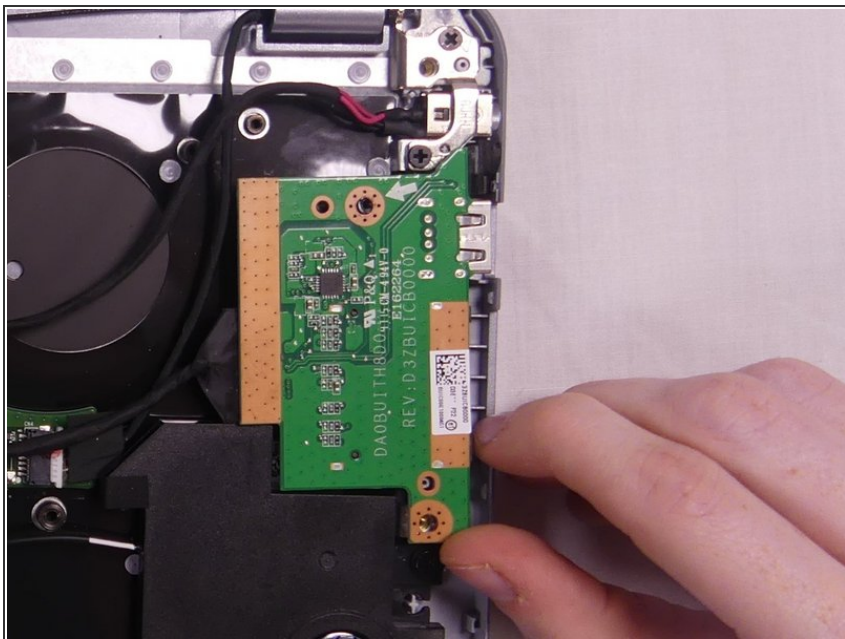
- The WiFi PCB is located next to the fan.

## Step 18



- Remove the Phillips 3.7 mm screw using a Phillips #1 screwdriver.

## Step 19



- Gently remove the WiFi PCB by pulling upward.

To reassemble your device, follow these instructions in reverse order.