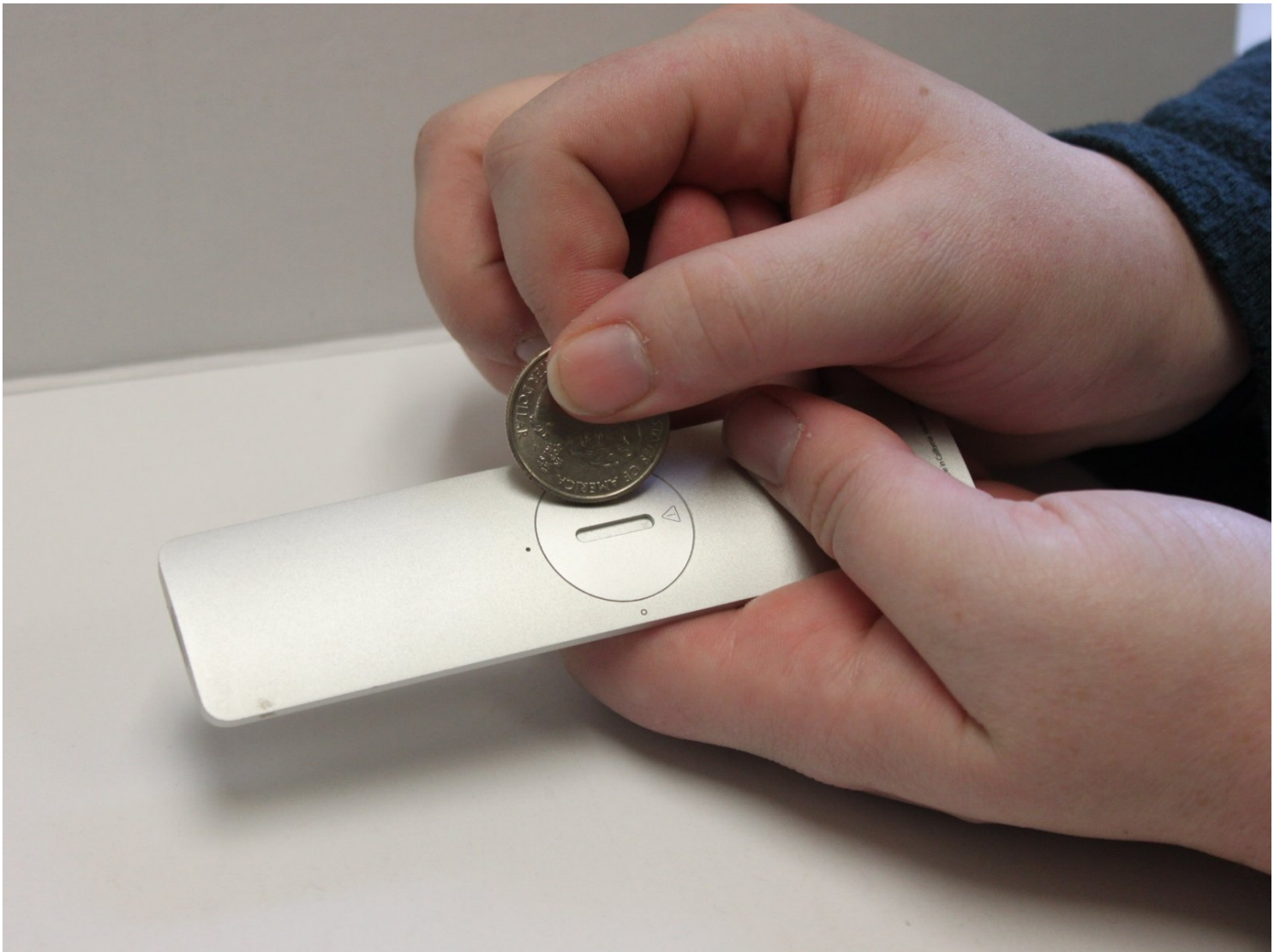




# Apple TV 2nd Generation Remote Battery Replacement

Remote not working? This guide will show how to...

Written By: Deanna Rice



# INTRODUCTION

Remote not working? This guide will show how to replace a dead battery in the Apple TV 2nd generation remote.

---

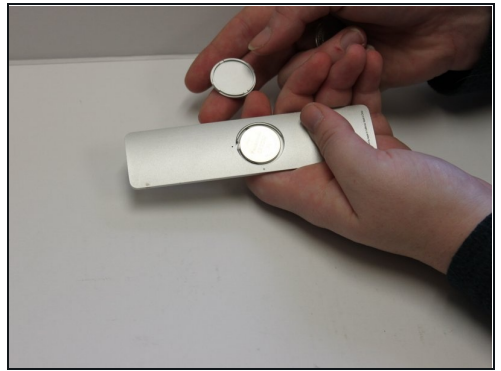
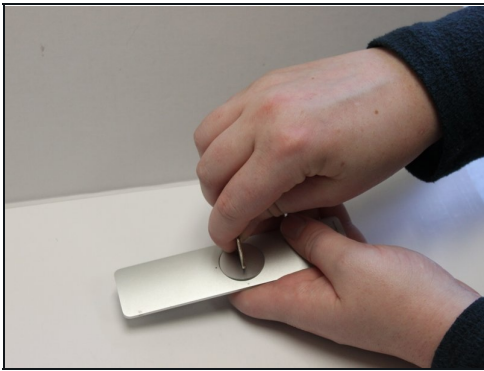
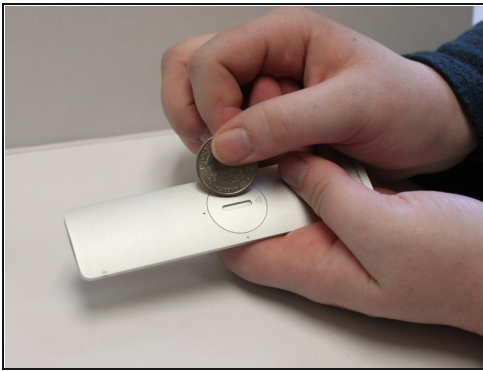
## TOOLS:

6-in-1 Screwdriver (1)

Coin (1)

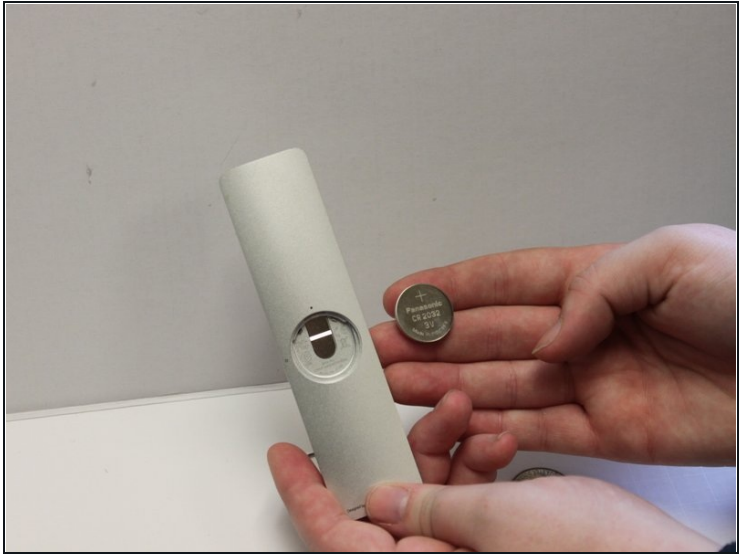
---

### Step 1 — Remote Battery



- Turn the remote over so the back is facing upwards. Locate the battery component.
- Place a coin or flathead screwdriver inside the slot, and turn it counterclockwise until the cover opens.

## Step 2



- The battery should easily pop out of the remote.
- Place the new battery into the empty compartment.

---

To reassemble your device, follow these instructions in reverse order.