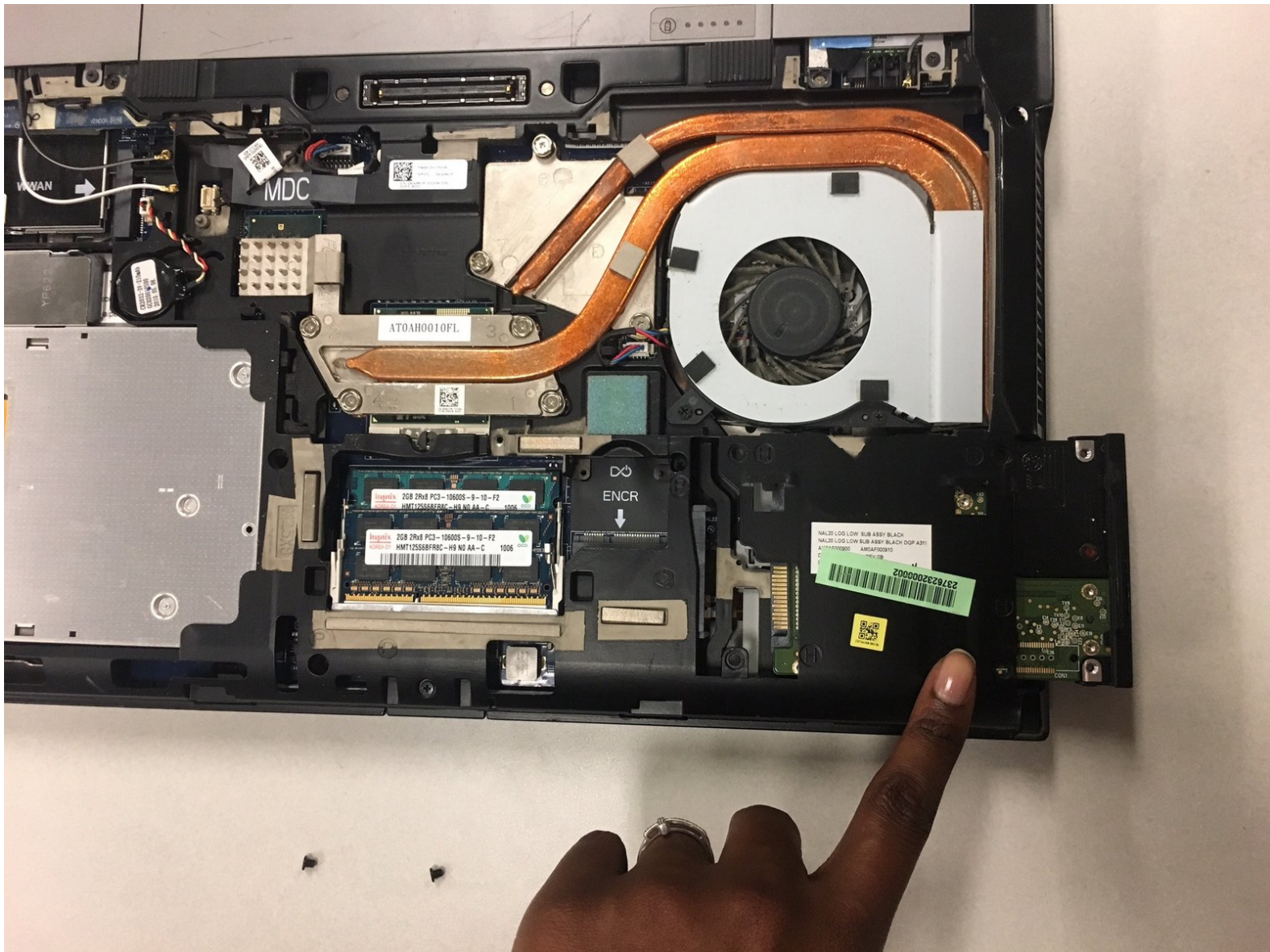




Dell Latitude E6510 Hard Drive Replacement

Follow this guide in order to replace the hard...

Written By: Kolin Doyle



INTRODUCTION

Follow this guide in order to replace the hard drive to your Dell Latitude E6510.



TOOLS:

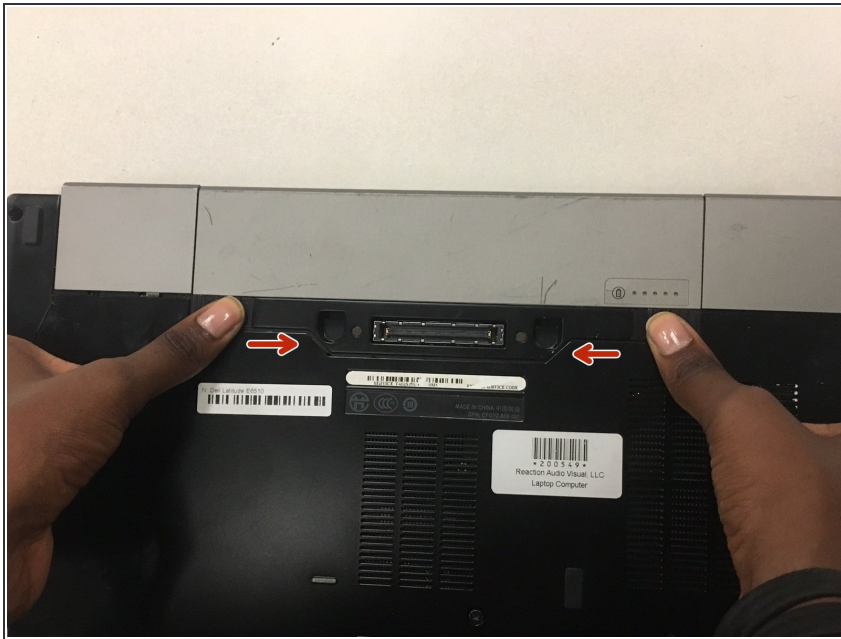
- [Spudger](#) (1)
- [Phillips #1 Screwdriver](#) (1)



PARTS:

- [1 TB SSD](#) (1)
- [250 GB SSD](#) (1)
- [Crucial MX500 500 GB SSD](#) (1)
- [2 TB SSD](#) (1)

Step 1 — Battery



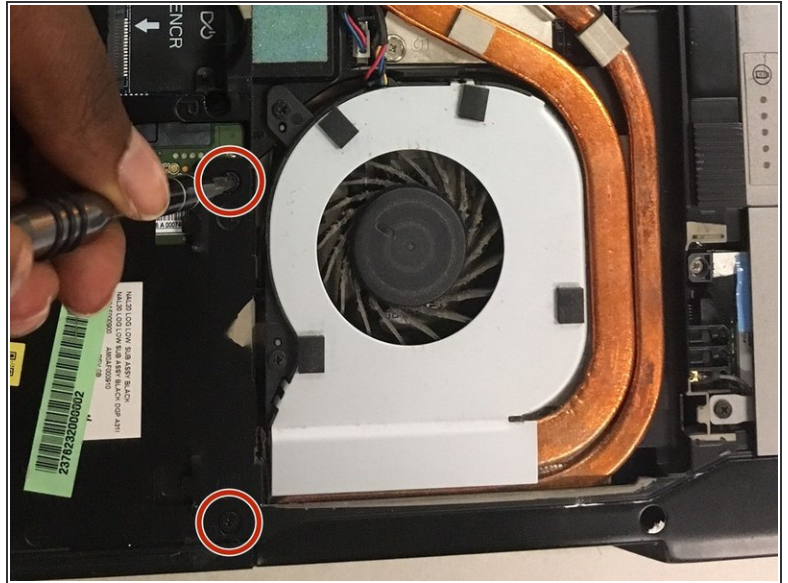
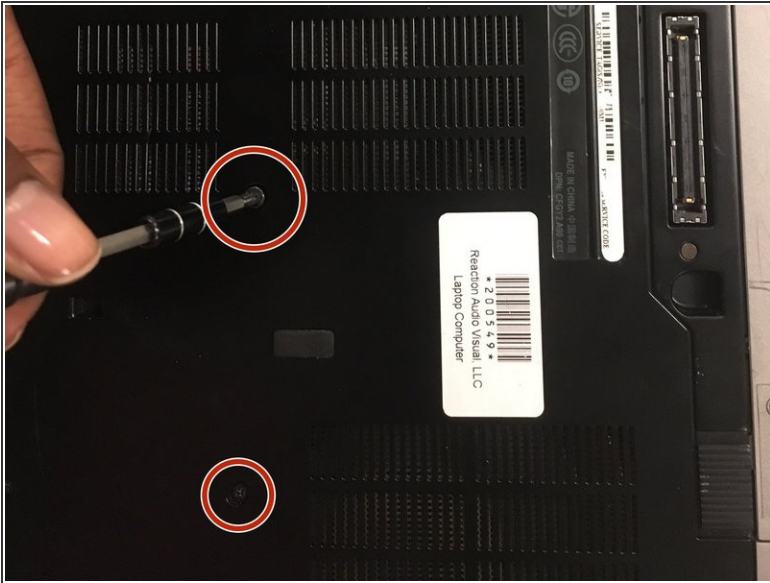
- Unlock the two latches on the back by sliding them inwards.

Step 2



- Slide the battery out from the laptop.

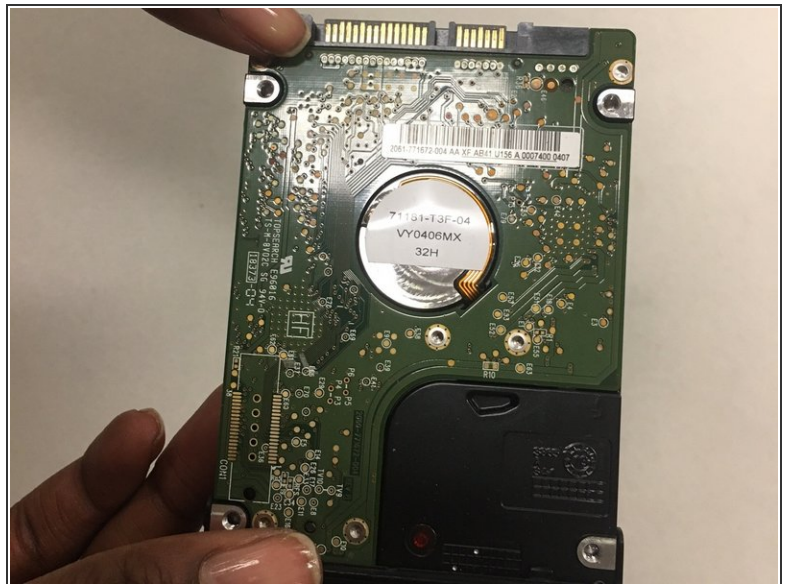
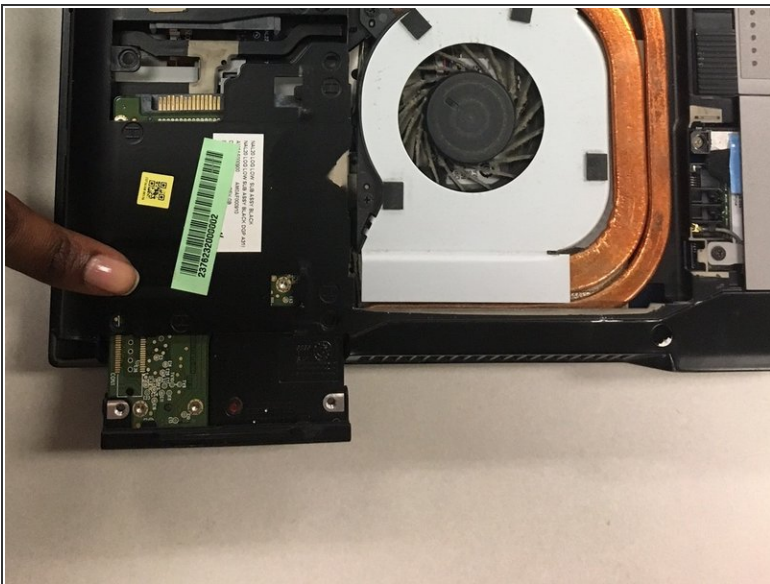
Step 3 — Hard Drive



- After removing the battery, unscrew the four 3 mm screws on the back plate using a Phillips #1 screwdriver.

i The back plate does not need to be removed. Removed only for a clear view.

Step 4



- The hard drive should slide out of the laptop. However, if not, use a spudger to pry the hard drive out of the laptop.

To reassemble your device, follow these instructions in reverse order.