



# Logitech Circle Speaker Replacement

Use this guide to replace the speaker on the Logitech Circle.

Written By: Emma Cochran



# INTRODUCTION

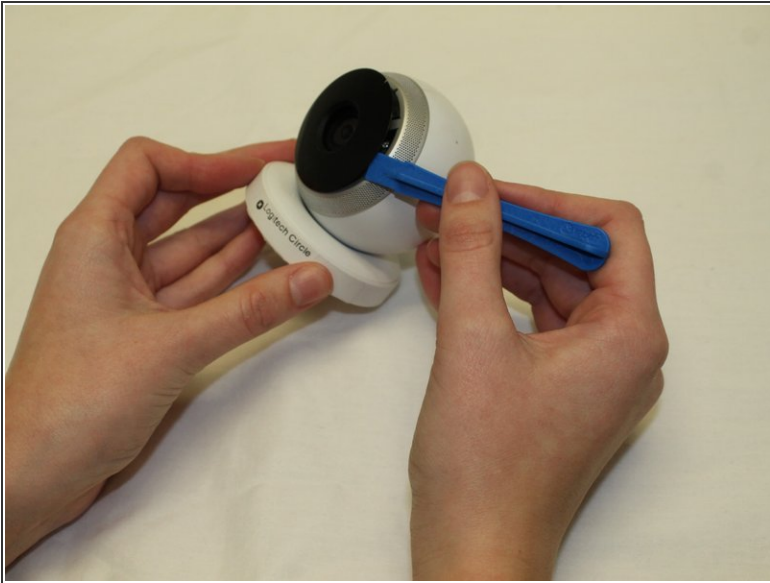
This guide will allow you to remove and replace the speaker inside of the Logitech Circle. This guide is relatively simple, but requires the removal of several screws and gently prying out the speaker from the base. Be sure to keep the screws organized for easier reconstruction.



## TOOLS:

- [Phillips #0 Screwdriver](#) (1)
  - [iFixit Opening Tools](#) (1)
-

## Step 1 — Speaker



- Wedge the plastic opening tool under the black circle lens to gently pry it off.
- ⓘ The lens is only attached with sticky tape and should remove relatively easily.

## Step 2



- Remove the four 3mm Phillips #0 screws that hold down the first ring.

### Step 3



- Remove the four 3mm Phillips #0 screws that hold down the second ring.

### Step 4

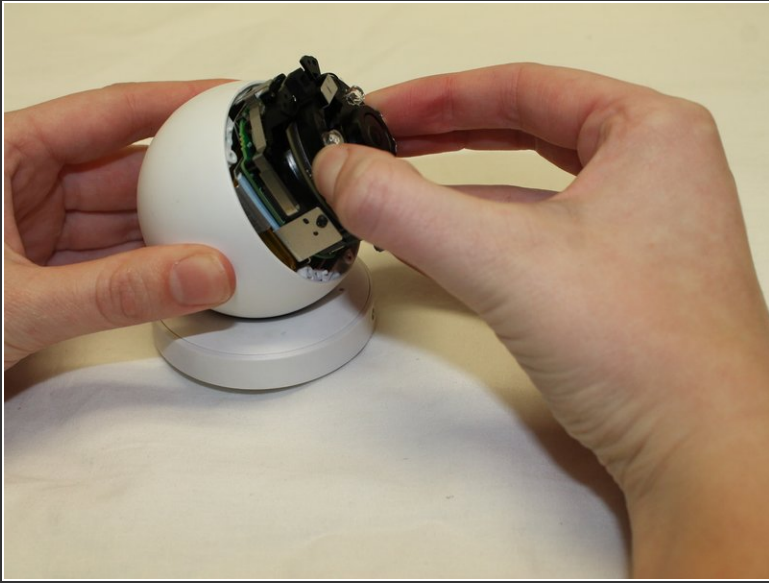


- Remove the four 3mm Phillips #0 screws that hold down the final ring. Do not remove the lens/battery bundle yet.

⚠ The lens/battery bundle is attached to the base by a ribbon cable that can break, so be very careful handling the circle.

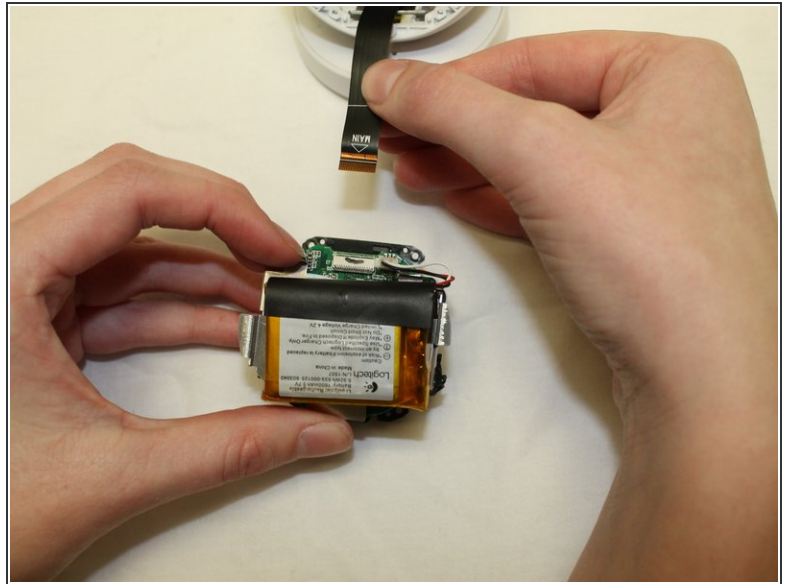
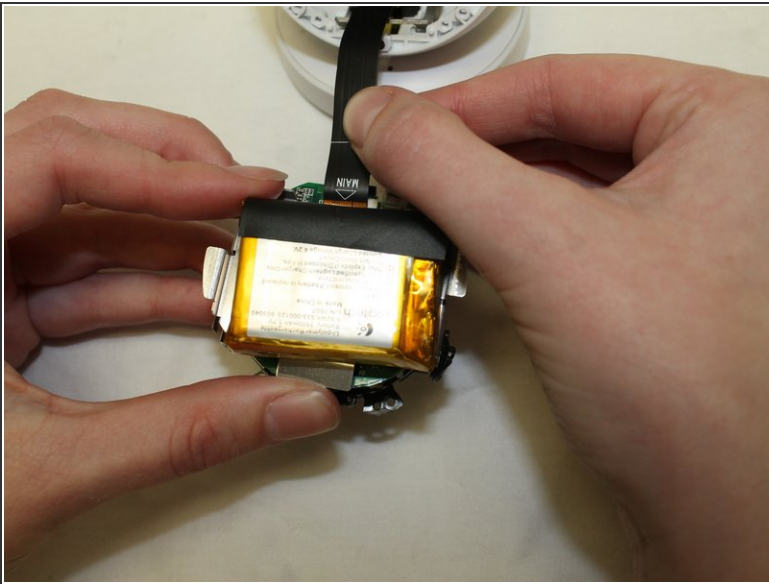


## Step 5



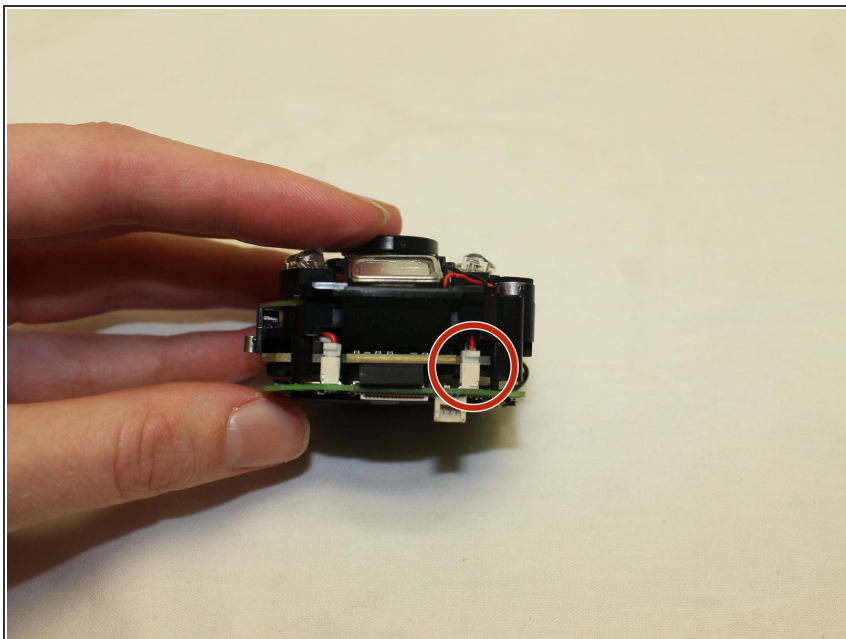
- Gently remove the lens/battery bundle from the base of the circle, being mindful of the ribbon cable.

## Step 6



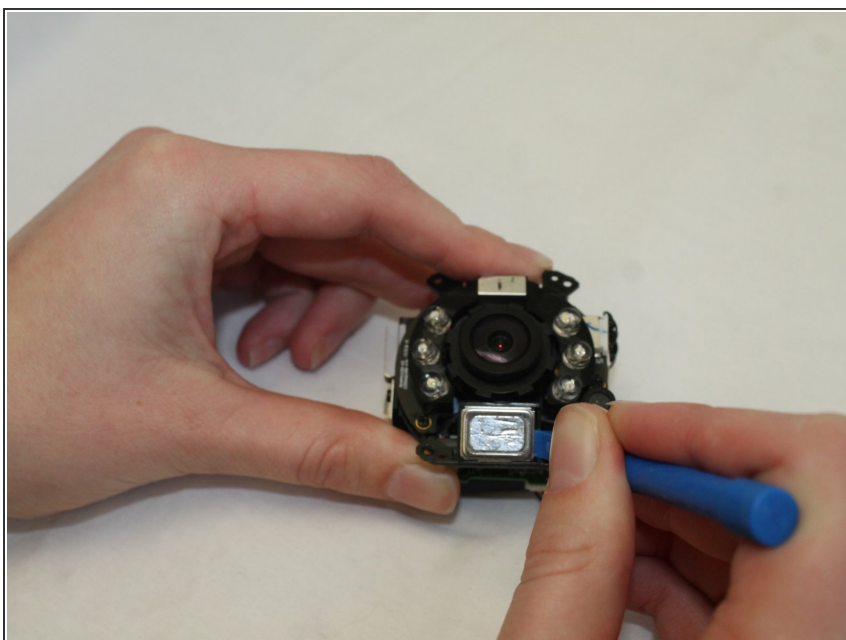
- Gently pull the ribbon cable loose from the lens/battery bundle.
- ⓘ While this is not an entirely necessary step, it helps to ensure the ribbon cable will not break during the rest of the replacement.

## Step 7



- Locate the speaker attachment, and carefully remove the speaker plug from the lens.

## Step 8



- Remove the speaker using a plastic opening tool. The battery is attached with glue, so use gentle prying motions to remove speaker.

To reassemble your device, follow these instructions in reverse order.