



Samsung Galaxy Core Display Replacement

Use this guide to replace the display

Written By: Smilzo



Step 1 — Display



- Turn the phone off
- Remove the back cover
- Extract battery

Step 2



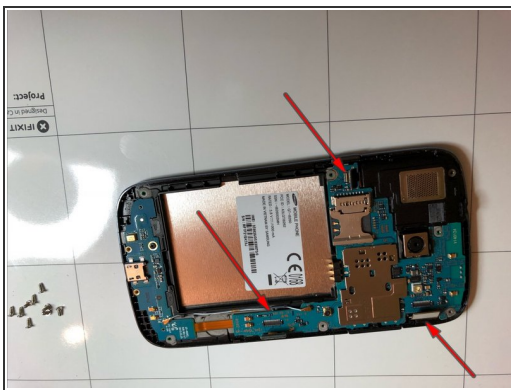
- Remove the 9 screws

Step 3



- Remove the central frame to access the motherboard, help yourself with a thin tool
- Remove the black screw that secures the lower motherboard

Step 4



- Unclip the 3 connectors
- Disconnect the connection cable of the 2 motherboards
- With a flat instrument, help yourself to unhook the motherboard

Step 5



- Remove top motherboard
- Remove Speaker
- Remove the lower motherboard with the help of a hot air hairdryer to help it detach from the adhesive

Step 6



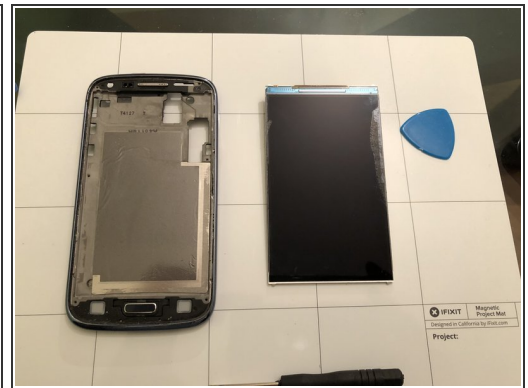
- If the touch screen glass is broken, use tape to avoid injury
- Disconnect the TouchScreen connector

Step 7



- Remove the touchscreen with thin tools between the glass and the central cover with the aid of a hair dryer or heat so that you can loosen the adhesive grip
- Be careful in the part of the buttons and the flat cable of the touchscreen if you need to use it again and do not replace it with a new one

Step 8



- Remove the display with thin tools, using heat to detach the fixing adhesive

To Reassemble your device, Follow these instruction reverse order.