



# How to disable touchscreen on samsung chromebook plus

This guide will show you how to physically...

Written By: Evan Elm



# INTRODUCTION

This guide will show you how to physically disable the touchscreen on the Samsung Chromebook plus

---

## TOOLS:

Phillips #0 Screwdriver (1)

---

## Step 1 — Before We begin



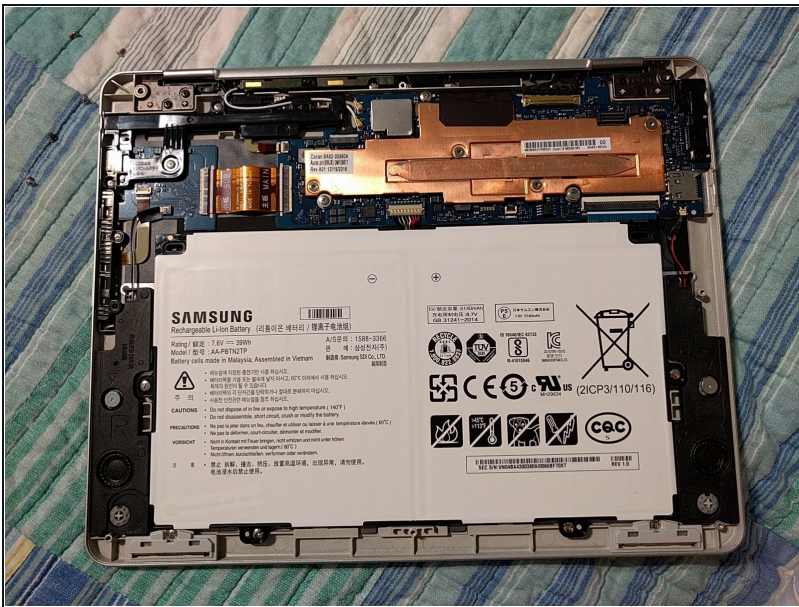
- This is not a normal thing to do to a chromebook. Please keep in mind that android app functionality may be degraded without touchscreen. This should only be done if your touchscreen is hypersensitive (like mine) and you can live without (certain) android apps.

## Step 2 — Opening the computer



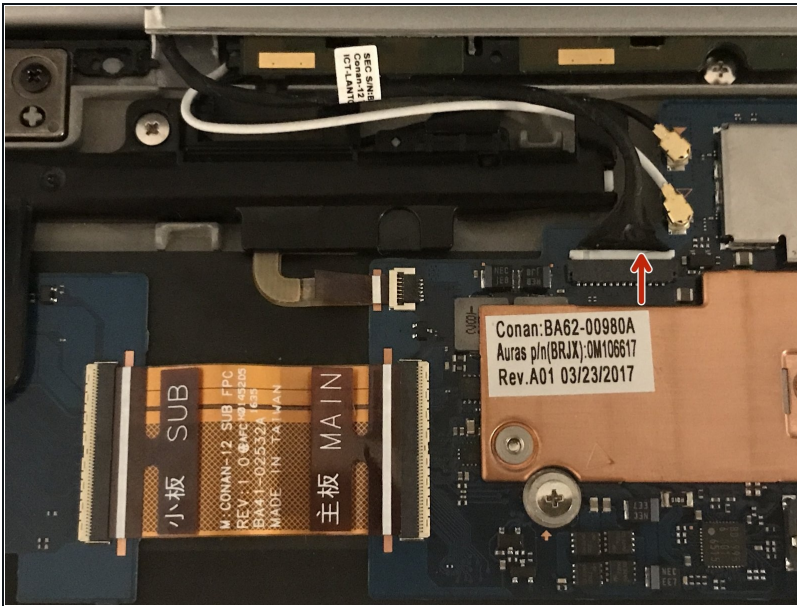
- This step is very easy, use a PHILIPS#0 to remove the 8 screws on the back panel (flip computer upside down). There are no screws under the feet.

## Step 3 — Removing Cover



- Use a [plastic card](#) (or fingernail) to separate the panel from the back where the gap is.

## Step 4 — Removing the digitizer cable



- In the top left corner (with the battery at the bottom) where the arrow is pointing, pull the cable out of the socket.

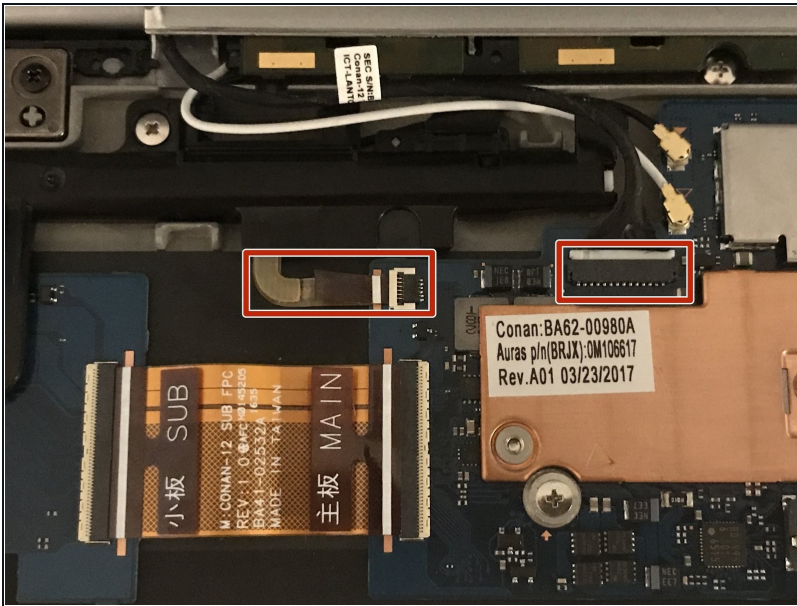
## Step 5 — Removing the S Pen sensor cable



- Remove the cable marked in this image by pulling on the pull tab. This will disable the s pen but will not physically remove it from the computer.



## Step 6 — Putting the cables back in (optional)



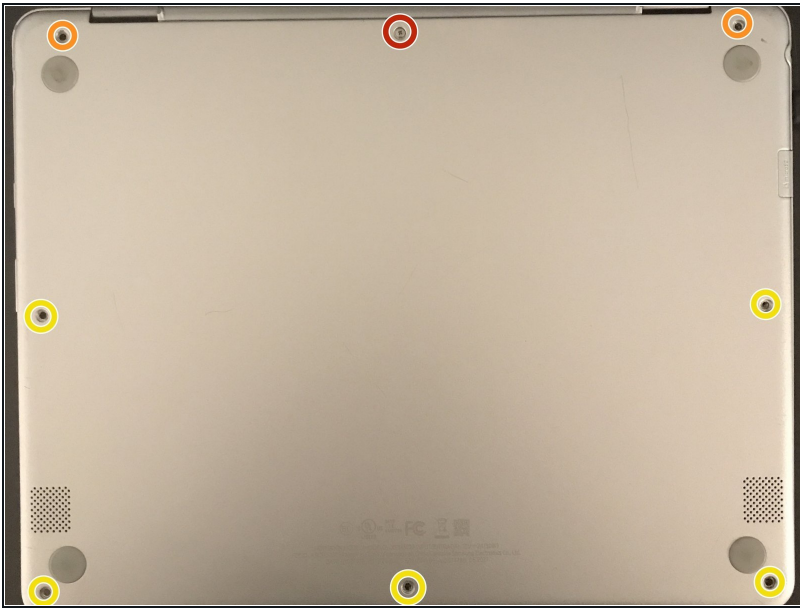
- To re-insert the digitizer cable just push on it until it goes in. To re-insert the S Pen cable, shove the end of the cable in until there is almost no space between the socket and the white line

## Step 7 — Re-adding the screws (NOTICE!)



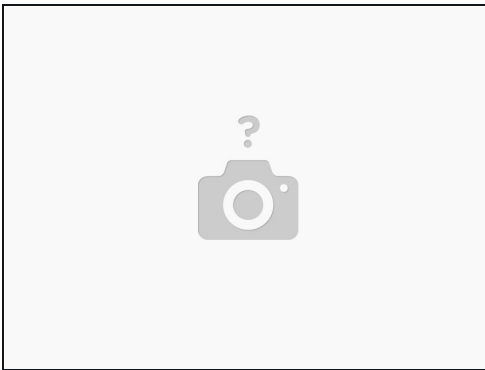
- Look at the red circle, do NOT put a screw there. One of the screws holding the back panel also fits in there.

## Step 8 — Re-inserting the screws



- NOTICE: YOU MUST RE-INSERT THE BACK COVER THIS WAY IN ORDER TO KEEP THE PANEL FROM BULGING! Slide the cover into the back (hinge side first), make sure to slide in then push down on top to make sure cover is secured. Once secured, insert top middle screw first (red), then insert other top screws (orange), then the other screws (yellow).

## Step 9 — Finished



- Done! To re-insert cables, please go thru the steps again (skip steps 4 and 5) and refer to step 6 on re-inserting the cables. After that, complete the rest of the steps.

---

To reactivate touchscreen/s pen support, please follow the steps in order again, skipping 4 and 5, but including 6.