



HP TouchSmart 15-r015dx Screen Replacement

This guide aims to aid in the replacement of your HP TouchSmart 15 screen.

Written By: Gabriel Terrasas



INTRODUCTION

Use this guide to lead in the replacement of your HP TouchSmart 15 screen.



TOOLS:

- [Metal Spudger](#) (1)
 - [64 Bit Driver Kit](#) (1)
-

Step 1 — Screen



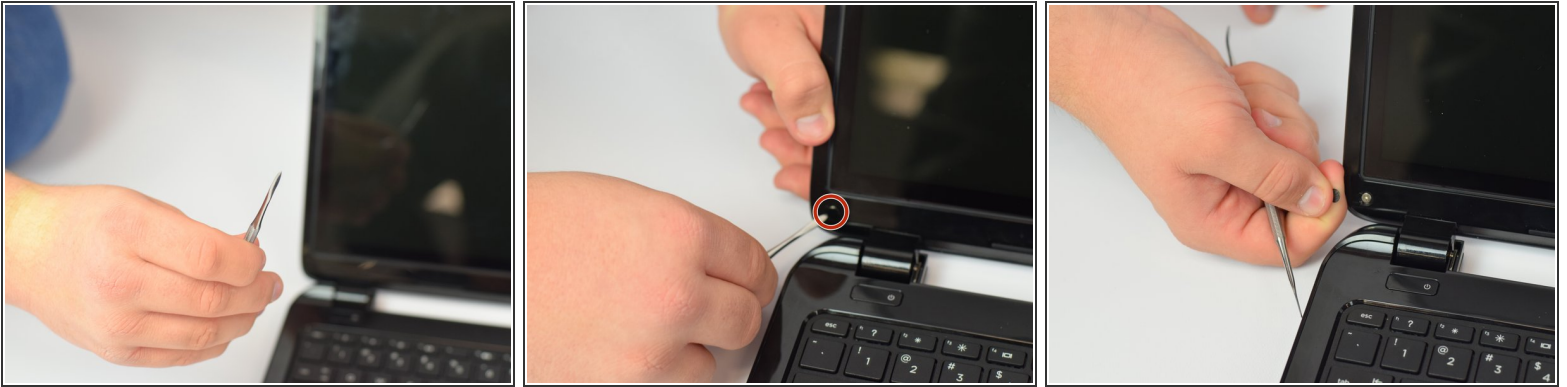
- Acquire the **metal spudger** and a **Precision Magnetized Driver with J1 size bit**.
- Flip your HP TouchSmart 15 over.

Step 2



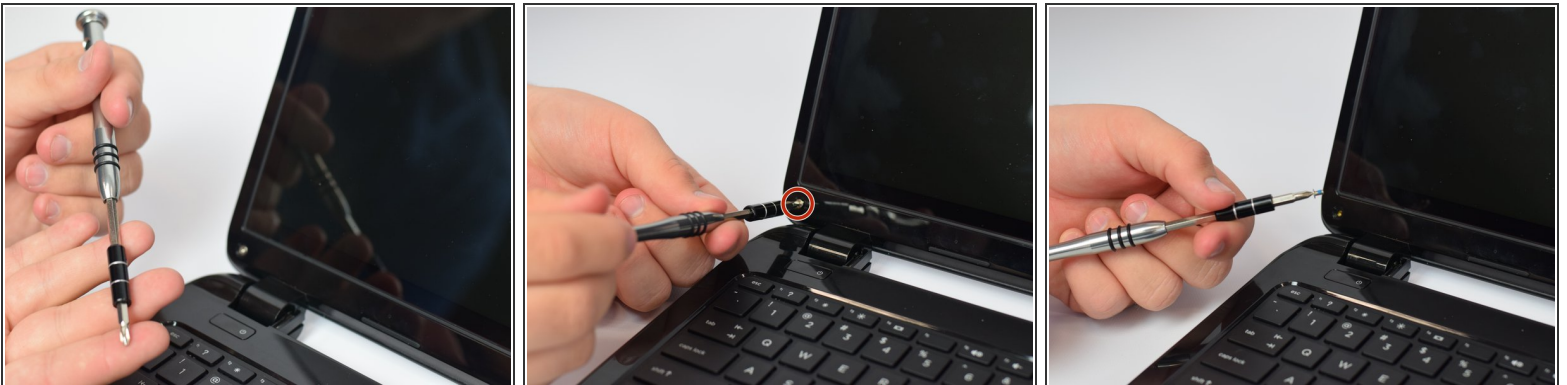
- Locate tabs on the underside of the laptop.
- Push both tabs towards the center of the laptop and pull away to remove battery.

Step 3



- Take the sharp end of the **pry tool** and pop out the black screw cover.
- Repeat on opposite side.

Step 4



- Take the **Precision Magnetized Driver with J1 size bit** and unscrew the screw.
- Repeat on opposite side.

Step 5



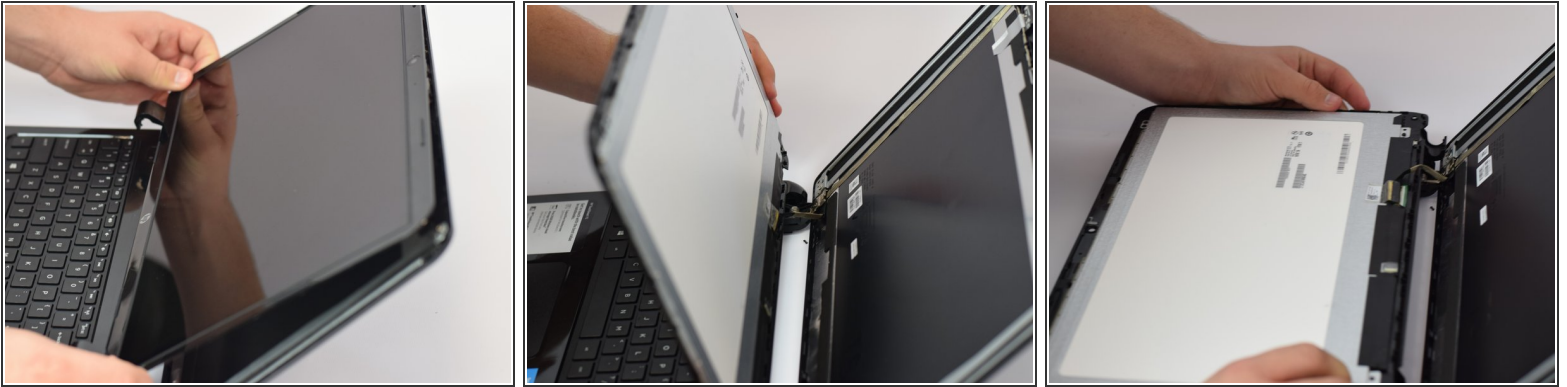
- Using the **pry tool**, begin to separate the touchscreen from the plastic backing.


Step 6



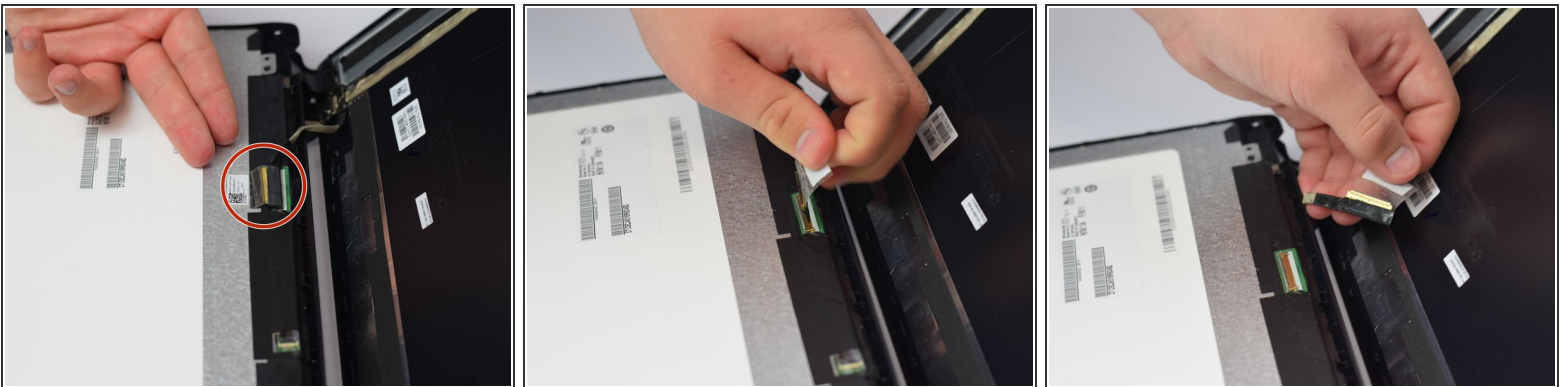
- Close the laptop and flip it over once again.
- Continue to pry the touchscreen from the plastic backing in the hinged area of the laptop.

Step 7



- Flip over the laptop and open it.
- Pull up on the separated touchscreen while pulling it away from the plastic backing.
 Be careful while laying down the touchscreen to not pull the connection point.
- Lay the touchscreen on the keyboard facedown.

Step 8



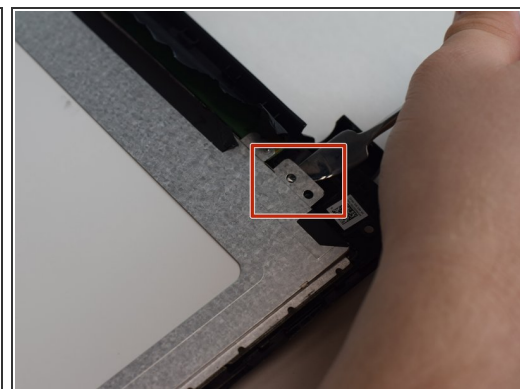
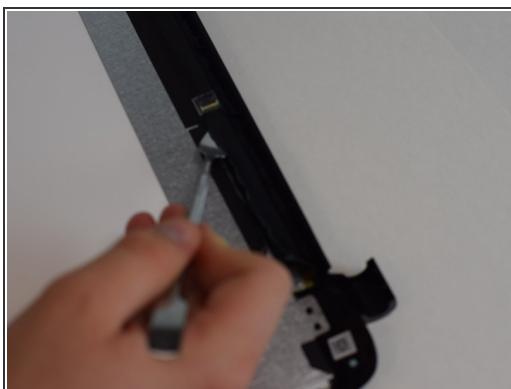
- Locate the connection point.
- Slowly and carefully peel off.

Step 9



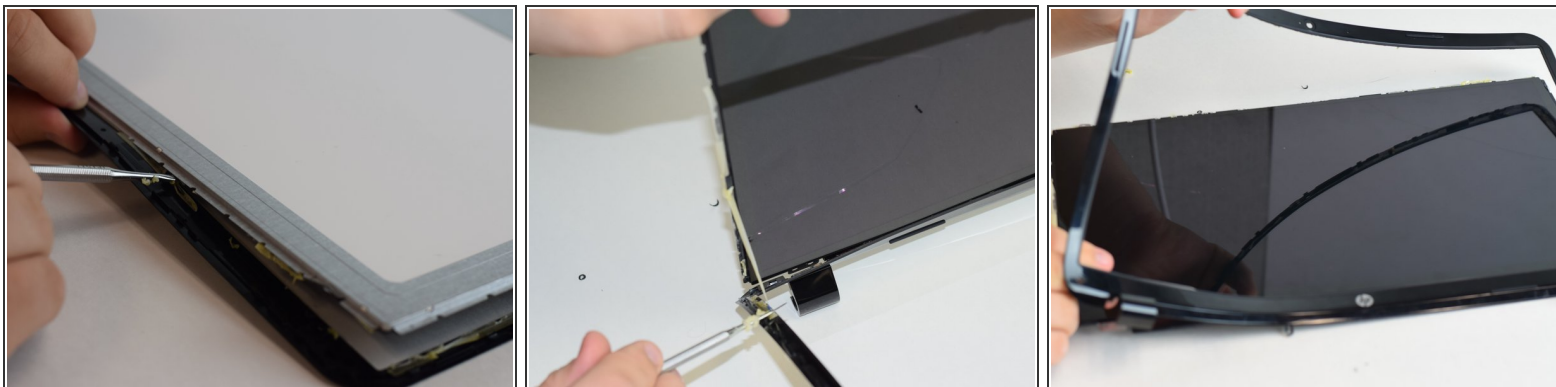
- Isolate the touchscreen from the keyboard.

Step 10



- Begin by peeling off the black adhesive tape using the **pry tool**.
- Once adhesive tape is removed, use the **pry tool** to remove the tab in the corner. Repeat in each corner.

Step 11



- Using the sharp end of the **pry tool**, separate the plastic from the screen.

Step 12



- Now it is time to reassemble your device with a new screen.

To reassemble your device, follow these instructions in reverse order.