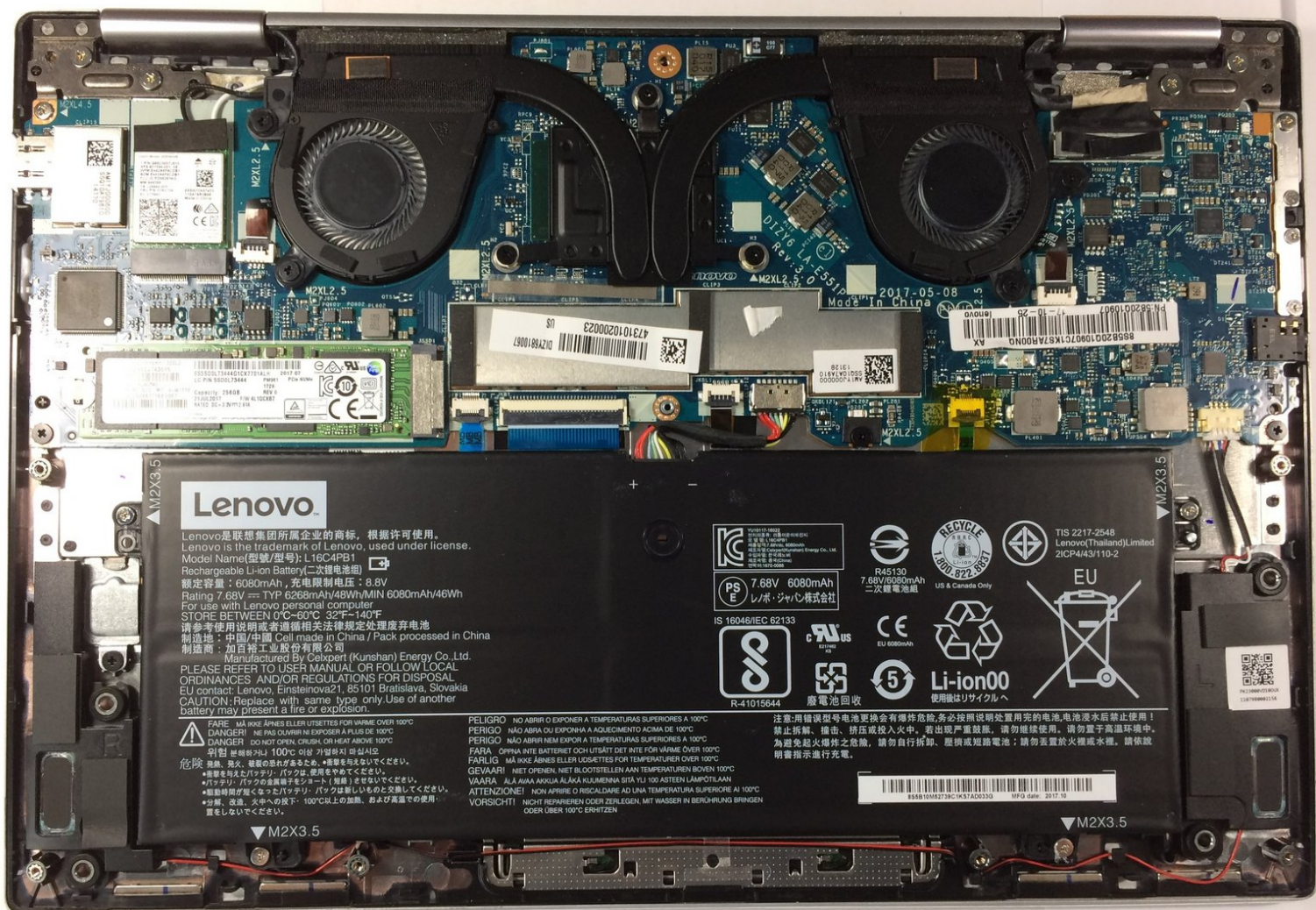




Lenovo Yoga 720 Battery Replacement

How to replace the battery

Written By: Aiden Baker



INTRODUCTION

This guide will show you how to replace your laptop's battery.



TOOLS:

- [T5 Torx Screwdriver](#) (1)
- [iFixit Opening Tools](#) (1)
- [JIS #1](#) (1)







PARTS:

- [Lenovo Yoga 720 13" Replacement Battery](#) (1)





Step 1 — Bottom Cover



-  Before you begin, be sure to turn off your laptop and discharge the battery down to 25%.
-  Start by flipping the device over so that you see the screws.
 -  Remove seven Torx T5 short screws.
 -  Remove three Torx T5 long screws.

Step 2



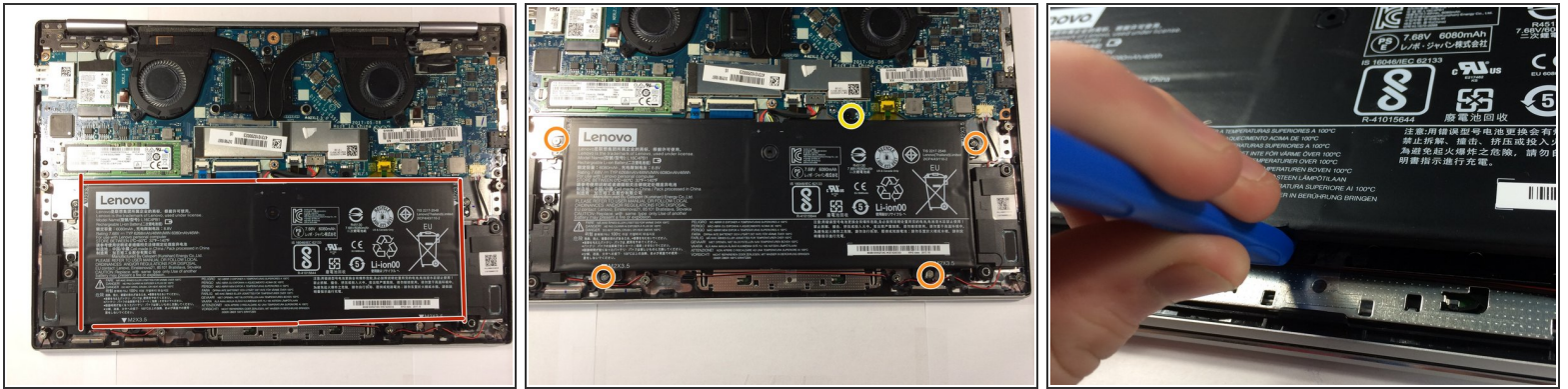
-  Starting from the USB port, use your opening tool to gently pry up the case.
-  Make sure you are prying on the cover itself, not the metal shield around the USB port.
-  Pry along the laptop in the order shown by the arrows.
-  Do NOT pry along the top side, or you risk damaging the casing. Stay with the arrows.

Step 3



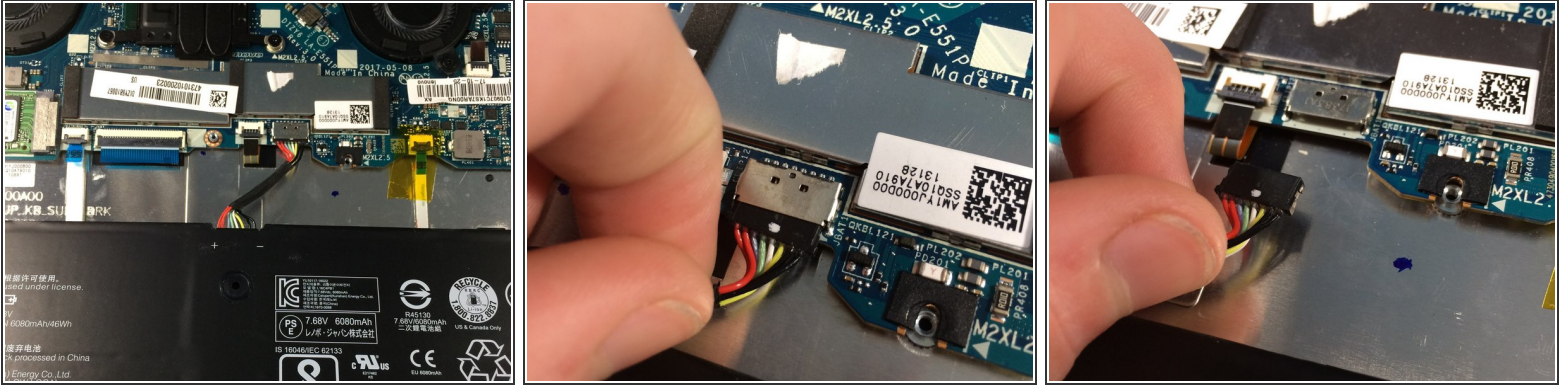
- Lift the case from the bottom side. NOT the side with the hinges.
⚠ When you feel resistance, do NOT keep lifting or you will damage the housing.
- Once you feel resistance, gently pull the case towards you. (away from the hinges.)
- Remove the case.

Step 4 — Battery



- This is the battery. For guides that are for other parts, the battery is removed for the reason of it being a pain to connect or disconnect while screwed in.
- ⚠ Be careful not to short anything on the motherboard, as the battery cannot be disconnected before removal.
- Remove four [J1 Philips screws](#).
- Remove one J1 philips screw.
- ⓘ Do not mix these screws up. If you put the longer screw where the shorter screw belongs, you will damage the shield around the keyboard.
- Lift the battery slightly using your plastic opening tool.
- ⚠ Do not lift the battery out all the way, as it is still connected to the motherboard.
- ⚠ Do NOT puncture or deform the battery or it may catch fire or even explode.

Step 5



- Pull the battery towards you until the wire is accessible.
- gently tug and wiggle on the wire until it pops out.
- Remove the battery.

To reassemble your device, follow these instructions in reverse order.

For optimal performance, after completing this guide, [calibrate](#) your newly installed battery.

Take your e-waste to an [R2 or e-Stewards certified recycler](#).

Repair didn't go as planned? Try some [basic troubleshooting](#), or ask our [Answers community](#) for help.