



Dare To Repair: How To Create a Guide

Learn how to create a guide on iFixit.com

Written By: Kelsea Weber



The free repair guide for everything,
written by everyone.

What would you like to fix today?



Join Log In



[iPhone 6 Battery Replacement](#) >

[Repair Guides](#) [Answers Forum](#) [Parts & Tools Store](#) [Teardowns](#) [Translate](#)



New Battery = Faster iPhone

Fix Kits starting at **\$16.99**

[Buy Now](#)

INTRODUCTION

This guide will walk you through how to create a repair guide on iFixit.com for the Dare to Repair Contest.

For more information about the contest, including rules, submission guidelines, and prizes, refer to our Dare to Repair contest announcement ["here"](#). As a reminder, your submissions are due on **Monday, May 14**.

Step 1 — Dare To Repair: How To Create a Guide

The image shows two side-by-side screenshots from the iFixit website. The left screenshot is the homepage, featuring the iFixit logo, a search bar, and a navigation menu. A red box highlights the 'Join' and 'Log In' links in the top right corner. The right screenshot is the 'Create Account' form, which includes fields for Name, Unique Username, Email, and Password, along with social media login options and a 'Create My Account' button.

Left Screenshot (iFixit Homepage):

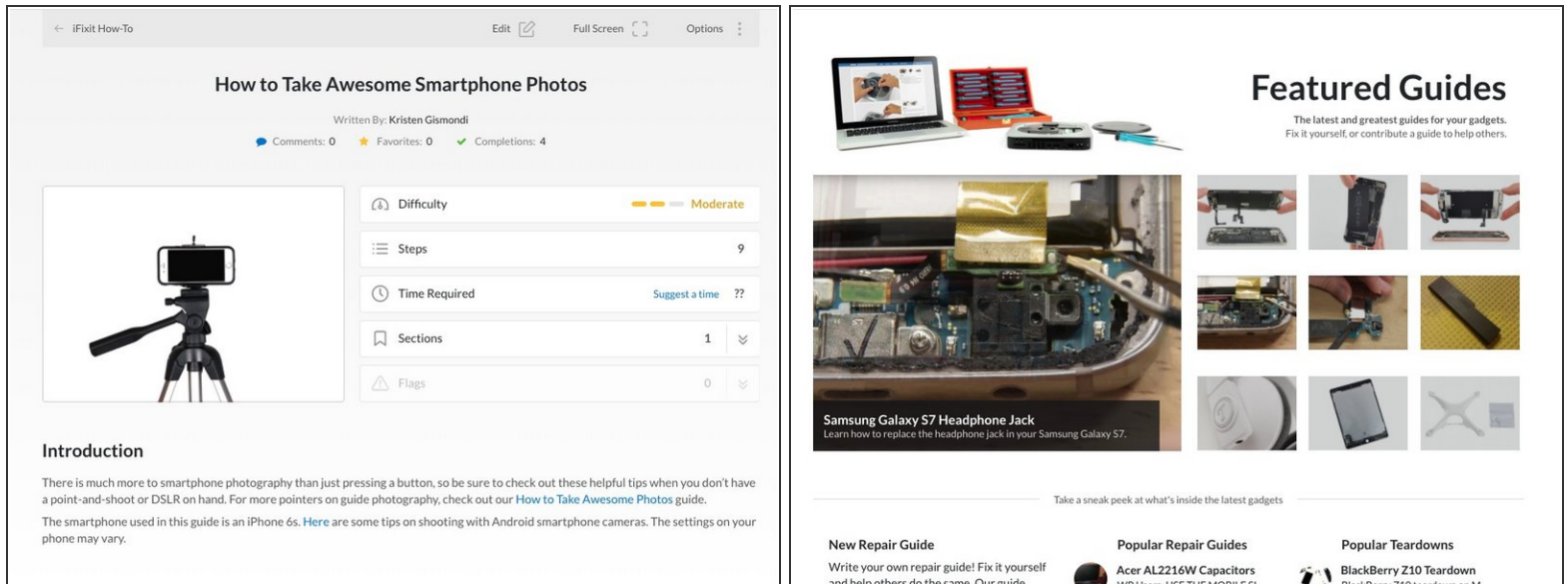
- Logo: iFIXIT
- Slogan: The free repair guide for everything, written by everyone.
- Search bar: What would you like to fix today?
- Navigation menu: Repair Guides, Answers Forum, Parts & Tools Store, Tear-downs, Translate
- Featured article: iPhone 6 Battery Replacement
- Promotional banner: New Battery = Faster iPhone. Fix Kits starting at \$16.99. Buy Now
- Top right corner: Join, Log In (highlighted with a red box)

Right Screenshot (Create Account Form):

- Form title: Create Account
- Fields: Name (Albert Einstein), Unique Username (@albert), Email (albert@domain.com), Password
- Social media options: Sign in with Google, Sign in with Facebook, Sign in with Yahoo!
- Buttons: Create My Account, Log In (link)

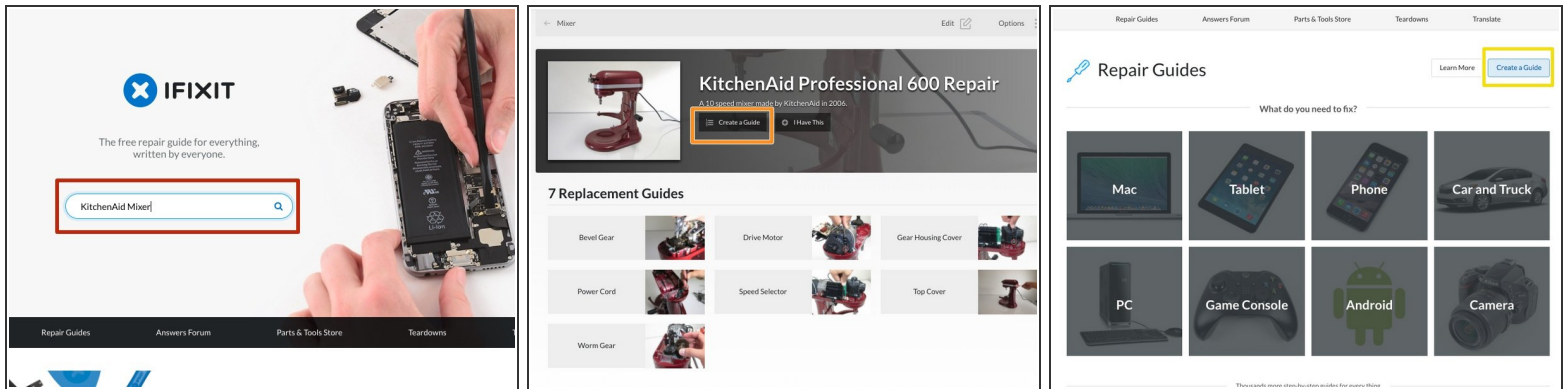
- First things first—you'll need to create an account. Go to [iFixit.com](https://www.ifixit.com), then click **Join** on the top-right corner of the homepage. Next, fill in the boxes with your information and click that big blue **Create My Account** button to finish.
- So far, so good! Now that you have an account, you're ready to start creating content on the site.

Step 2 — Guide Photos



- Behind every great repair guide, there are quality photos. Don't worry—you don't need a professional camera to take good photos. We put together a few guides with some photography tips and tricks to help get you started:
 - [How to Take Awesome Photos](#)
 - [How to Take Awesome Photos with Your Smartphone](#)
- Now that you're primed to be the next Ansel Adams, you can start documenting your repair process. Take a photo for every step of your repair process. We'll show you how and where to upload them in a bit.

Step 3



- Your beautiful pictures need a guide to live in! Before you getcha' guide on, check to see if your device already exists on the iFixit site by searching for your device on the [iFixit homepage](#).
- If your device exists, click **Create a Guide** located to the right of the device photo.
- Didn't find your device? No problem. Just click **Create a Guide** from the [Guide Homepage](#).

Step 4

- Now, select what type of guide you will be writing.
- For the Dare to Repair contest, select **Replacement**.
- Then, fill out the section “**What part are you replacing ?**”

Step 5

Introduction Details Guide Steps English

What type of guide is this?
Replacement

Device
KitchenAid Professional 600

What part are you replacing?
Example: Oil and Oil Filter

Title
KitchenAid Professional 600 Replacement

Search Summary
Summarize in a sentence or two what this guide will accomplish.

Show More

Save

Creating Introduction

Your contributions are licensed under the open source Creative Commons license.

Create a New Guide

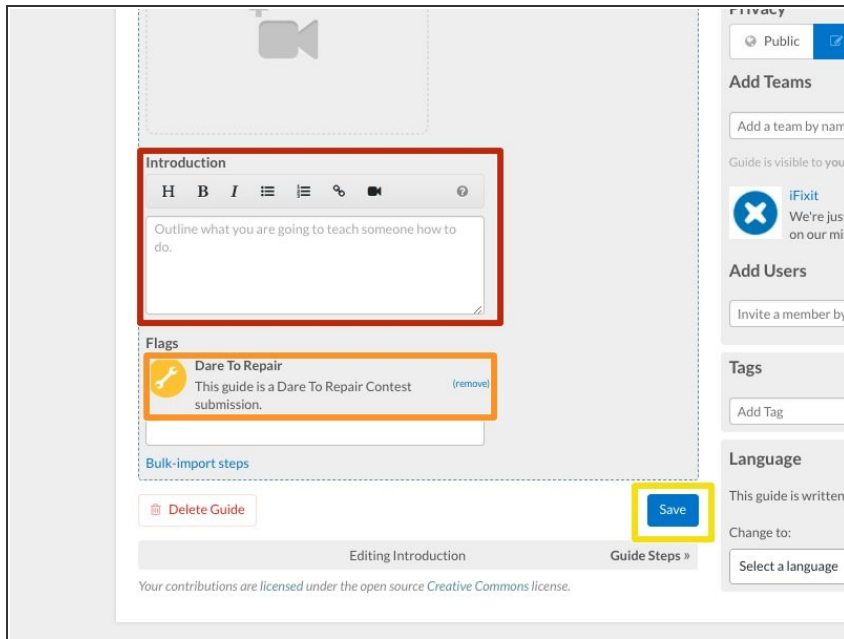
Create a repair guide!
Help the world by sharing your repair knowledge.

Need some coaching? Visit our wiki:
[Creating a Repair Guide](#)

Participate in other ways:
[Ways to Contribute](#)

- Next up, fill out the **Search Summary**. Fun fact—this summary isn't visible on our site, but it tells search engines how to find your guide. So make sure it includes the name of the device and describes what your guide accomplishes in one sentence. The better the summary, the more likely you'll be discovered and become repair-famous.
- Click **Show More** to get started on your **Guide Introduction**.

Step 6



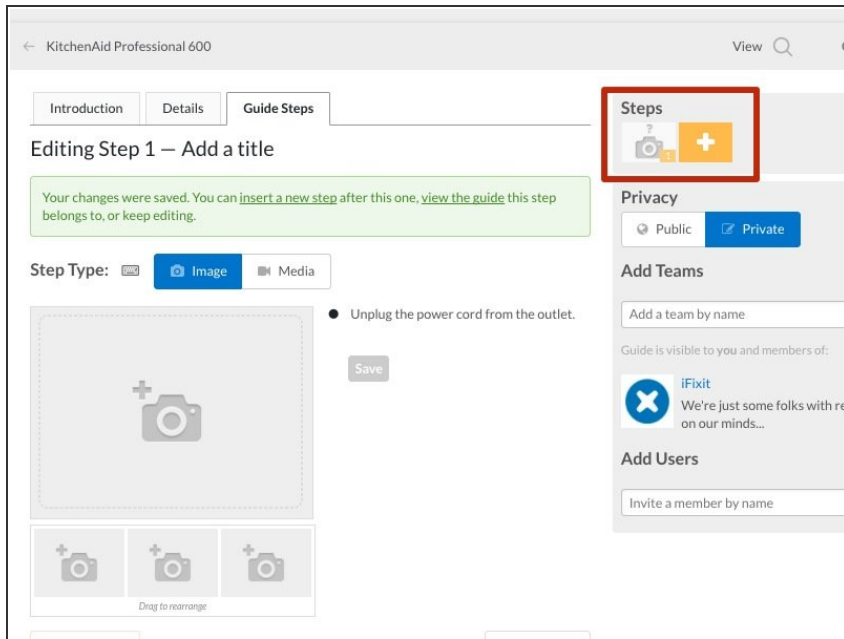
- Your **Introduction** should outline what your guide covers, and why someone would need it. Introductions appear at the top of the guide.
- We'd also like you to include a brief explanation that tells us why you chose to model your replacement part.
- Under **Flags**, select **Dare to Repair** from the drop down list.
- **⚠ This is very important! We won't be able to find your submission without this flag. Which means we won't be able to give you \$\$ if we can't find your guide.**
- Save your work by clicking that big blue **Save** button on the bottom right of your screen.

Step 7 — Upload your model

The screenshot shows the 'Details' tab of the iFixit guide creation interface. At the top, there are three tabs: 'Introduction', 'Details' (highlighted with a red box), and 'Guide Steps'. The 'Details' tab contains several sections: 'Time estimate' with a 'Range' toggle set to 'No' and a 'No estimate' label; 'Difficulty estimate' set to 'Moderate'; 'Prerequisite guides' with a text input field; 'Tools' with an 'Add a tool' link; 'Parts' with an 'Add a part' link; 'Conclusion' with a text area containing the instruction 'To reassemble your device, follow these instructions in reverse order.'; 'Attached documents' with an 'Add New' link (highlighted with an orange box) and a 'Featured' section; and a 'Bulk-import steps' link. On the right sidebar, there is a camera icon for uploading a model, a 'Steps' section with a plus icon, an 'Edit Permissions' section with a reputation slider set to 500, a 'Privacy' section with 'Public' and 'Private' radio buttons (with 'Private' selected), an 'Add Teams' section with a text input field, and a list of guides visible to the user and members, including one from 'iFixit'.

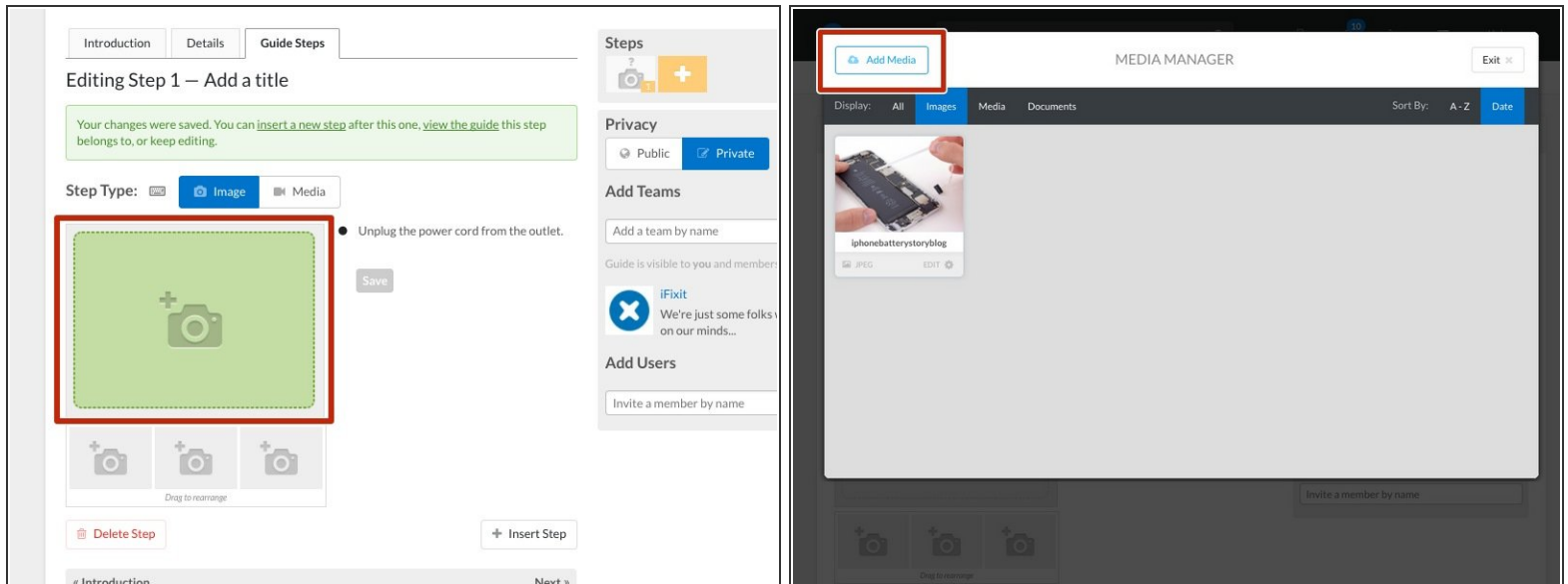
- At the top of your screen, you'll see three tabs. Click the **Details** tab to add information about your modeling procedure. Then upload the raw files. Here's a list of the file types we accept:
 - (.3ds) (.amf) (.blend) (.c4d) (.dwg) (.fbx) (.ma) (.obj) (.stl)
- Click **Add New** to attach any documents you want us to see.
- Hit **Save**.

Step 8



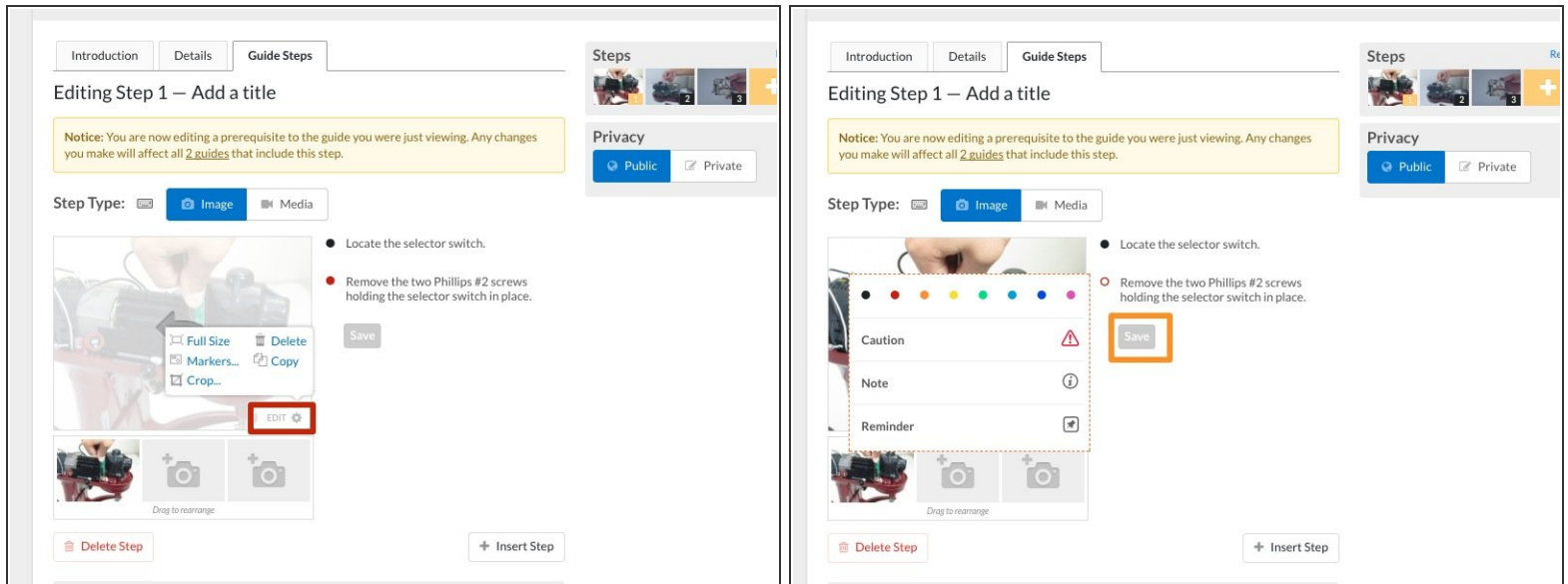
- Now sharpen your keyboard and get ready to write. In the text box to the right of the empty picture box, write the instructions for the first step of your repair.
- Once you're happy with your text, it's time for images!
- To add a new step, select the white plus sign in the yellow box at the top right of your screen. Then add text to your new step. Rinse and repeat for every step in your guide.

Step 9



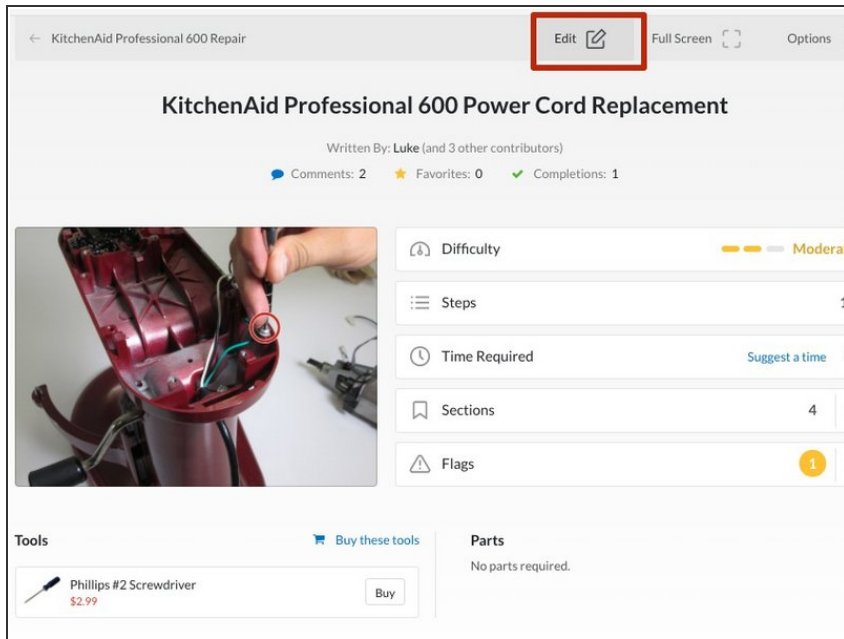
- Time to add all those pretty pictures you took. Click the camera icon in the photo box to open the Media Manager.
- Once you're in the Media Manager, upload photo files from your computer by selecting **Add Media**.
- Once your photo has uploaded, click on it to place it on the guide step.
- To rearrange the order of the photos, click and drag the photo to move it to the desired position on the image shelf.

Step 10



- Photo editing tools can be found by clicking **Edit**, located at the bottom right corner of the image.
- If you'd like to highlight something specific in your image—like the location of small screws or connectors—select **Markup**.
 - Pro Tip: You can change the color of the corresponding bullet by clicking on it. Color coding your bullets to match the pictures in a step makes it easier for readers to follow along. Plus, colors are fun.
 - You know what else is fun? Adding **Caution**, **Note**, and **Reminder** bullets to your guides. The easier it is to follow your guide, the more people will use it. The more people that use it, the more devices we save from the landfill. So basically, we're relying on you to help us save the world. No pressure, tho.
- And **PLEASE** Don't forget to save your work! The world needs to see your guide.

Step 11



- If you're not happy with your guide (or you're a crazy perfectionist), you can always go back and edit. Just select **Edit** on the top right corner of the guide to re-open your work.
- That's it! That's everything you need to know to create a guide. Feel free to comment below with any questions. Thanks for contributing and happy fixing!

Thank you for your contribution!