



Google Pixel 2 XL Screen Replacement

This repair guide was authored by the iFixit...

Written By: Adam O'Camb



INTRODUCTION

This repair guide was authored by the iFixit staff and hasn't been endorsed by Google. Learn more about our repair guides [here](#).

Use this guide to replace a cracked or faulty screen, including the display and digitizer, on your Google Pixel 2 XL. If it does not include adhesive, the replacement part will need replacement adhesive in order to seal the phone. There may also be small parts that need to be transferred from the original display to the replacement. Inspect both displays closely to make sure all relevant components are moved from the original display to the replacement.



TOOLS:

[iFixit Opening Picks \(Set of 6\)](#) (1)
[iFixit Opening Tool](#) (1)
[Spudger](#) (1)
[Suction Handle](#) (1)
[Tweezers](#) (1)
[Scissors](#) (1)



PARTS:

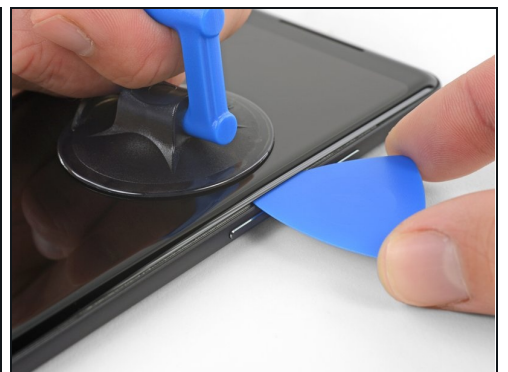
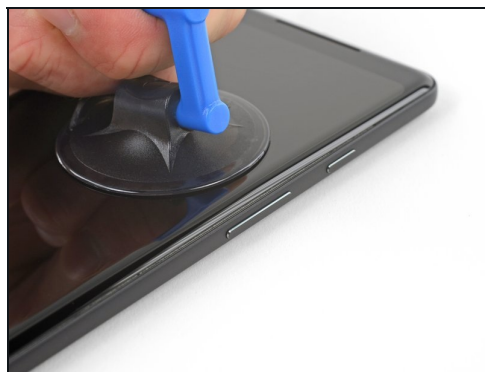
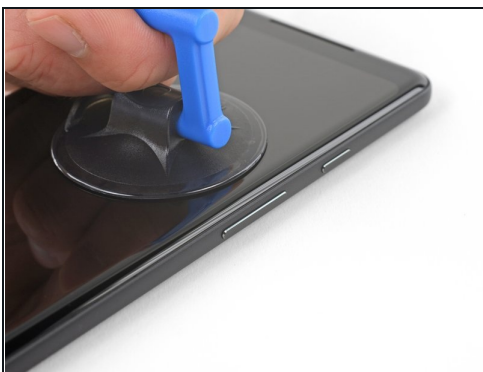
[Google Pixel 2 XL Screen - Genuine](#) (1)
[Tesa 61395 Double-Sided Tape](#) (1)

Step 1 — Opening Procedure



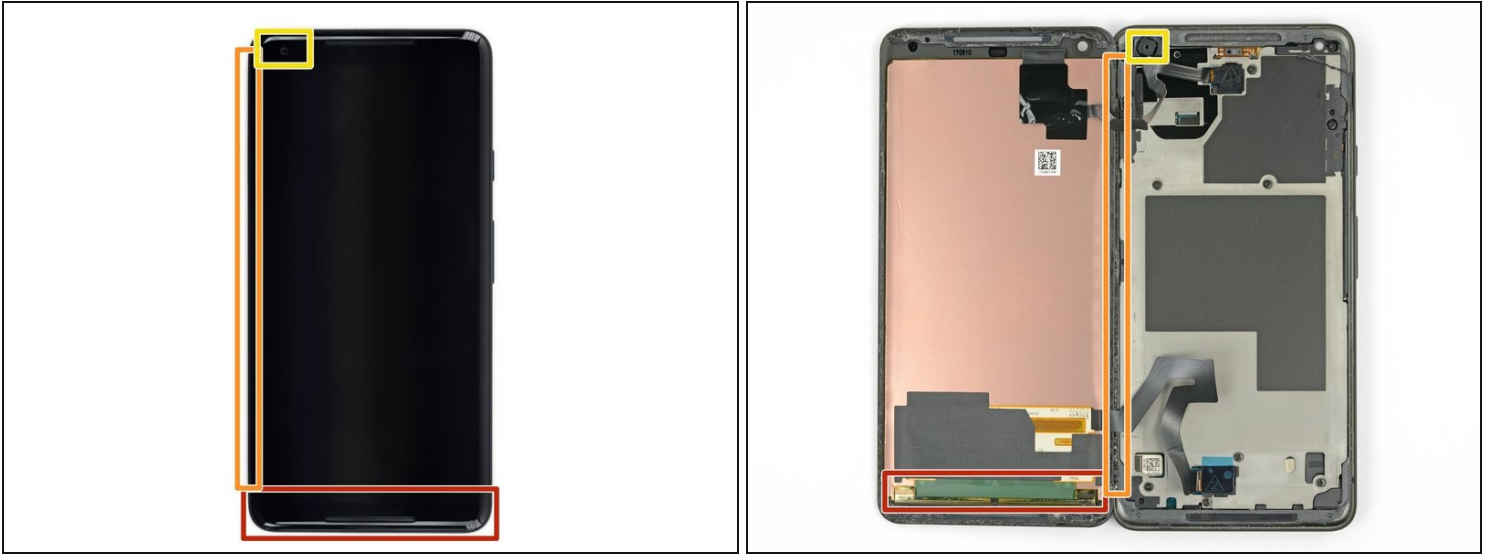
- ① If your display glass is cracked, tape over the glass to prevent bodily harm and further breakage. This also makes a smooth surface allowing the suction cup to bond.
- Apply a suction cup as close to the SIM slot edge of the phone as you can while avoiding the curved edge.
 - ① The suction cup will not make a good seal on the curved portion of the glass.

Step 2



- Pull up on the suction cup with firm, constant pressure and insert an opening pick between the front panel and rear case.
- ① This requires a significant amount of force and patience. If you have trouble, rock the suction cup and screen to weaken the adhesive, or apply heat with an iOpener, heat gun, or hair dryer.

Step 3



⚠ In the following steps, extra caution is required in certain areas to avoid damage to the phone:

- Do not insert the pick more than 0.25 inches (6 mm) into the bottom edge of the phone. If the pick contacts the folded portion of the OLED panel, it can damage the display.
- Do not cut along the left edge; there are delicate display cables that can be damaged.
- Only make very shallow cuts in the upper left corner; prying deeply can damage the front-facing camera.

Step 4



- Slide the opening pick down the right side of the phone to separate the display adhesive.

Step 5



- ① In the following steps, use the flat edge of the opening pick, rather than a corner, to cut. This will help prevent inserting the pick too deeply.
- Slide the opening pick around the lower-right corner and along the bottom edge of the phone.

Step 6



- Reinsert the flat edge of the pick at the top-right corner of the phone, and slide it around the corner and the top edge of the phone.

Step 7

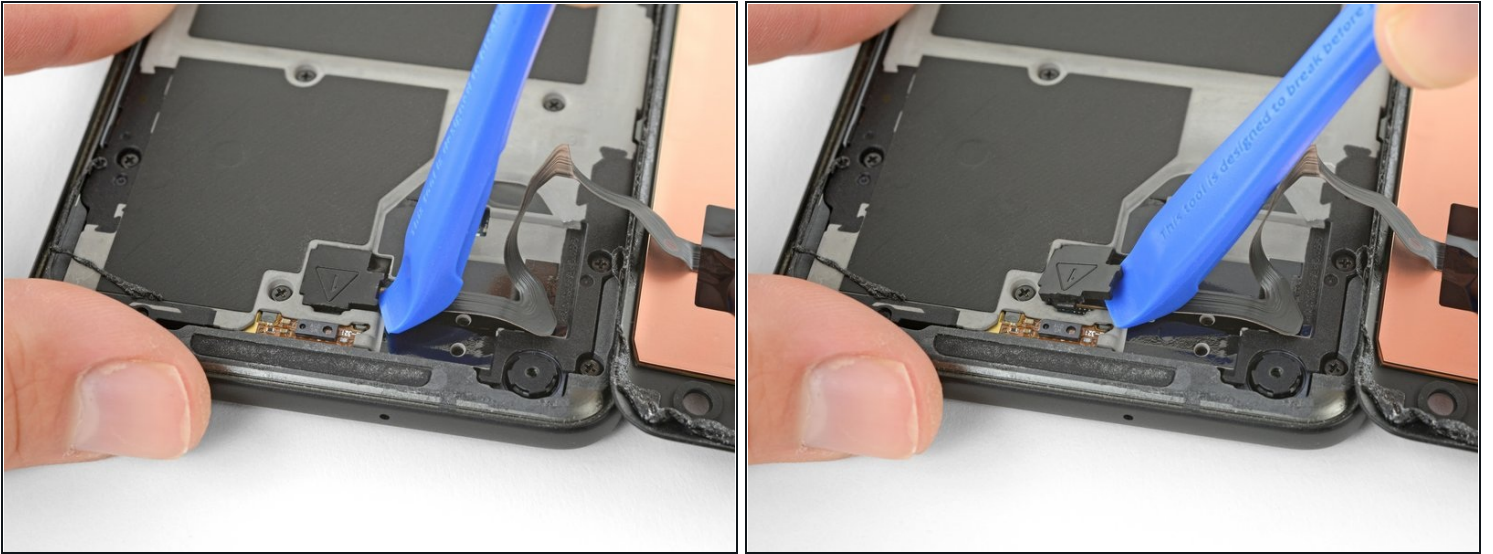


- Gently lift the display from the right side of the phone, opening it like a book.
 - ① If the display doesn't readily lift, do some extra prying to separate the last of the adhesive.

⚠ Don't try to fully separate the display yet, as fragile ribbon cables still connect it to the phone's motherboard.

- Carefully lay the display flat on the table next to the rest of the phone, keeping it close to the phone to avoid straining the display and digitizer cables.

Step 8



- Use the corner of an opening tool to pry up and unclip on the lower edge of the digitizer cable connector cover.

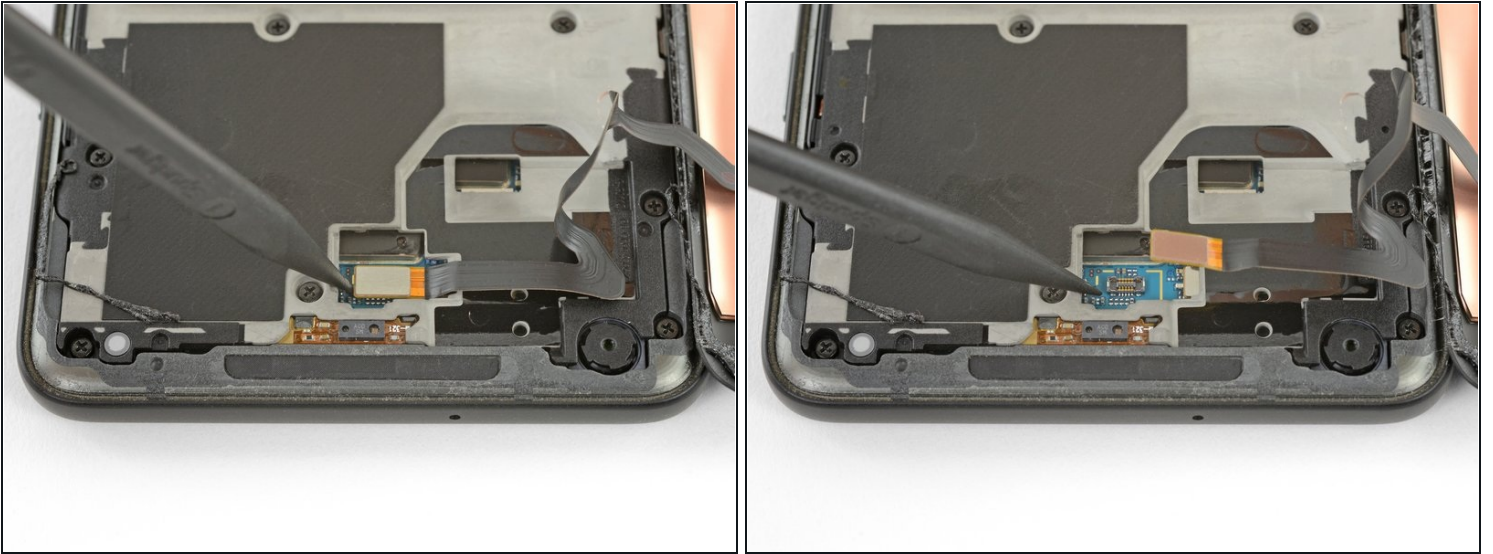
ⓘ The clip securing this cover is [along the bottom edge](#).

⚠ Pry carefully to avoid damaging the cable underneath, or losing the cover itself.

- Remove the connector cover.

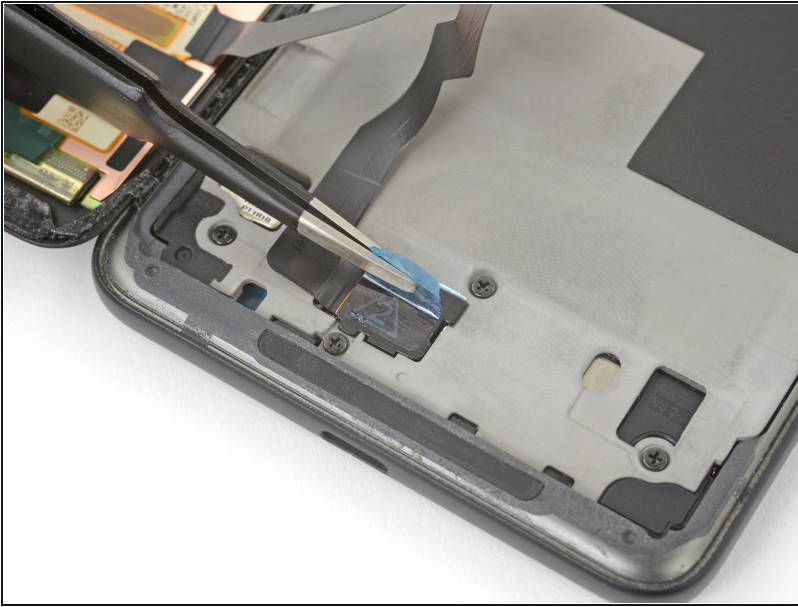
ⓘ Make sure to keep this component so you can reinstall it during reassembly.

Step 9



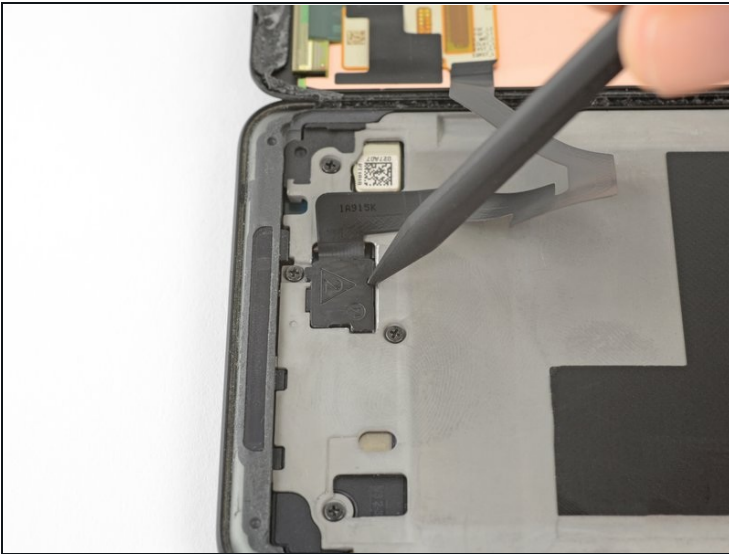
- Use the point of a spudger to lift the digitizer cable connector up and out of its socket on the motherboard.
- ☑ To re-attach [press connectors](#) like this one, carefully align and press down on one side until it clicks into place, then repeat on the other side. Do not press down on the middle. If the connector is misaligned, the pins can bend, causing permanent damage.
- ☑ If any part of your screen doesn't respond to touch after your repair, re-seat this connector, making sure it clicks fully into place and that there's no dust or other obstruction in the socket.

Step 10



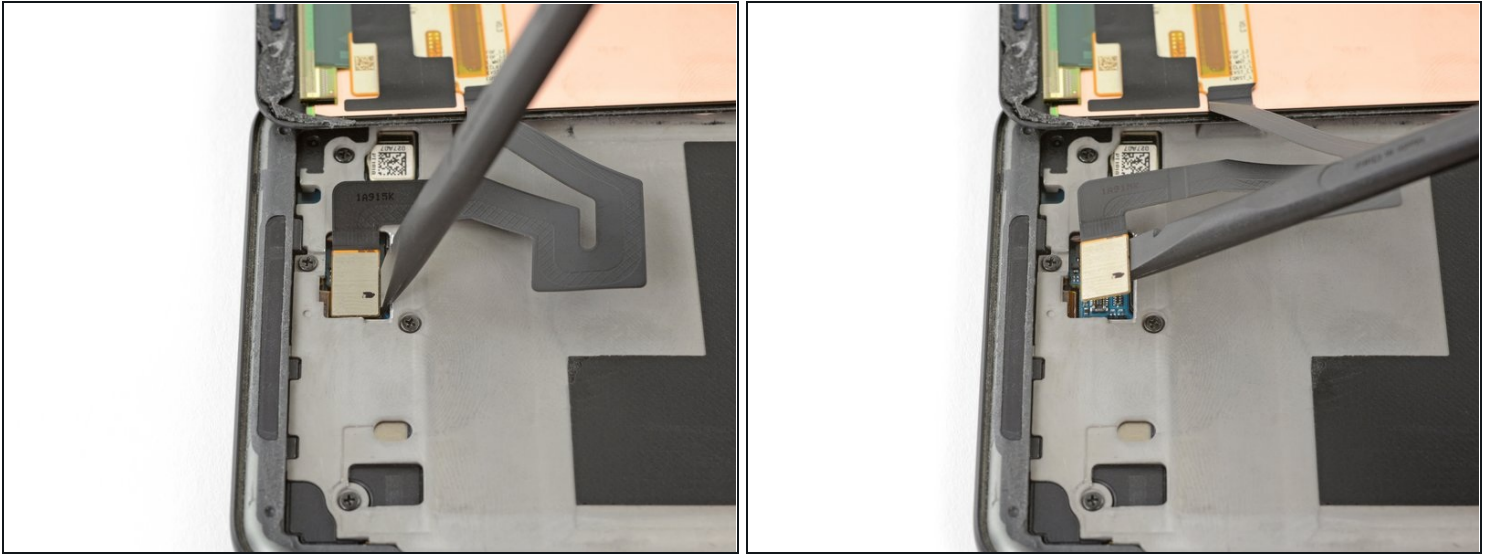
- Use [tweezers](#) to remove any tape from the display connector cover.

Step 11



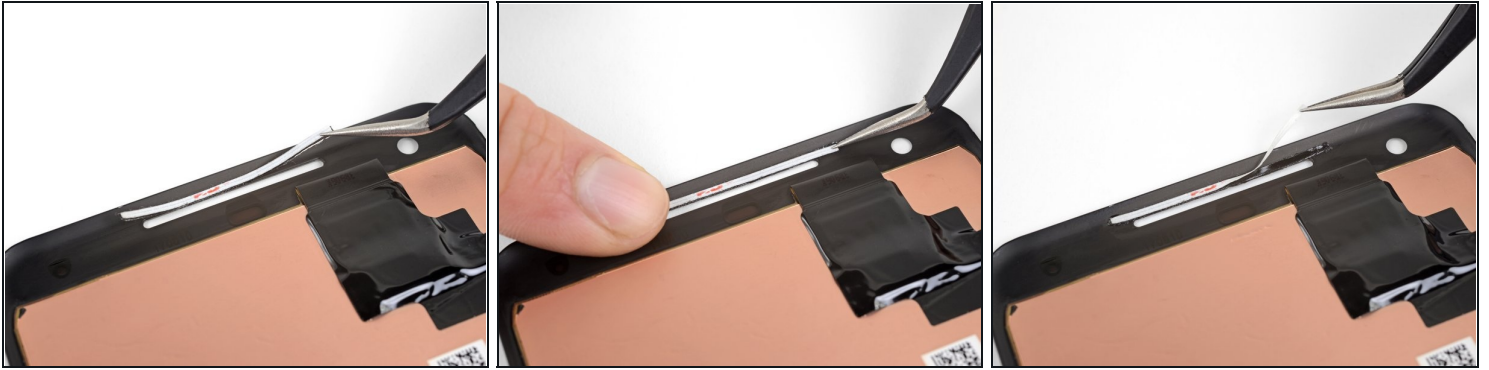
- Insert the point of a spudger into the small hole on the edge of the display connector cover.
 - Use the spudger to pry the cover out of its recess.
 - Remove the connector cover.
- ⓘ Make sure to keep this component so you can reinstall it during reassembly.

Step 12



- Use the flat edge of a spudger to lift the display cable connector up from its socket.
 - Remove the display.
- ☒ During reassembly, pause here if you wish to [replace the adhesive around the edges of the display](#).

Step 13 — Screen



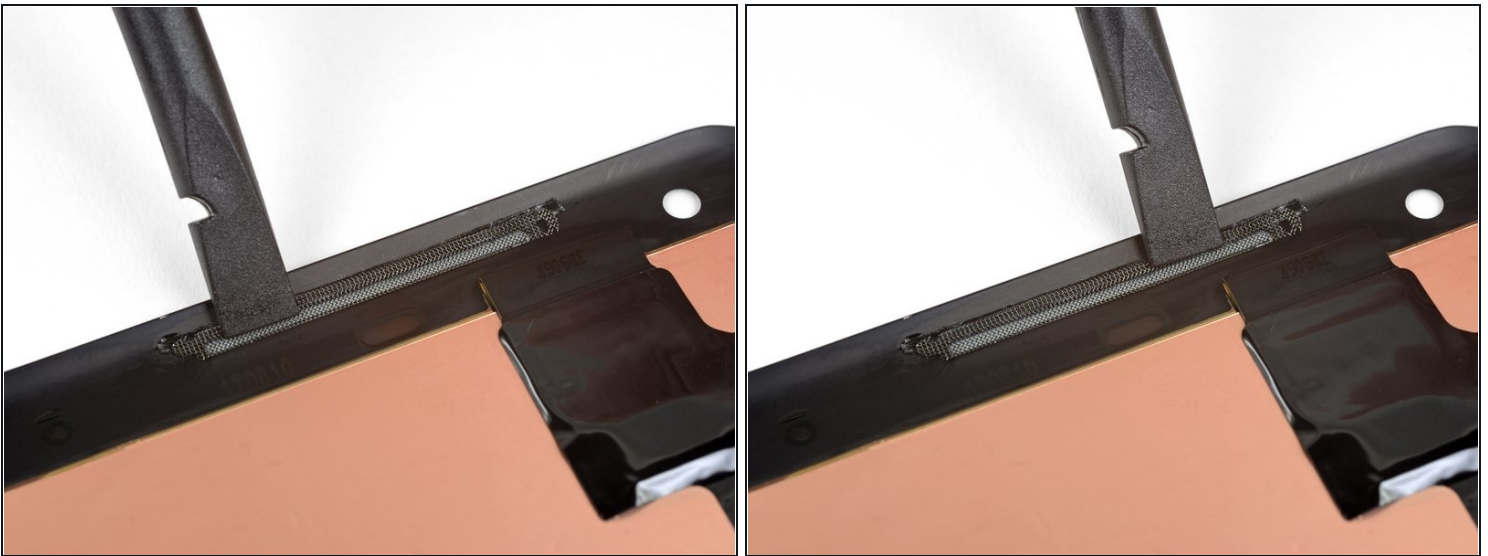
- Your replacement display may not come with pre-installed speaker grilles or a front-facing camera gasket. If that is the case, use [tweezers](#) to carefully remove these parts from your old display and follow the rest of the guide to install them on a new display.
- Clean any adhesive residue off of the parts before reinstalling them.
- ⓘ Make sure to install the grilles and gasket before applying display adhesive.
- Cut a strip of 1 mm wide double-sided tape to be about 3 cm (1.25 inches) long.
- Lay the adhesive strip along the upper edge of the earpiece speaker slot in your new display so that it's centered over the slot and touching the upper edge.
- ⓘ The adhesive strip needs to be as close as possible to the edge of the slot without overlapping. Otherwise, it can interfere with the display adhesive.
- Gently press the adhesive strip into place on the display with your finger or a spudger.
- Peel the white backing away from the adhesive strip.

Step 14



- Lightly set the speaker grille into its slot so that the indented half of the grille sits inside the slot, and the flat, unindented half of the grille is above the slot on top of the adhesive. Do not push it onto the adhesive yet.
- Use the point of a spudger to gently push the edges of the grille against the edges of the slot, centering the grille in the slot.

Step 15



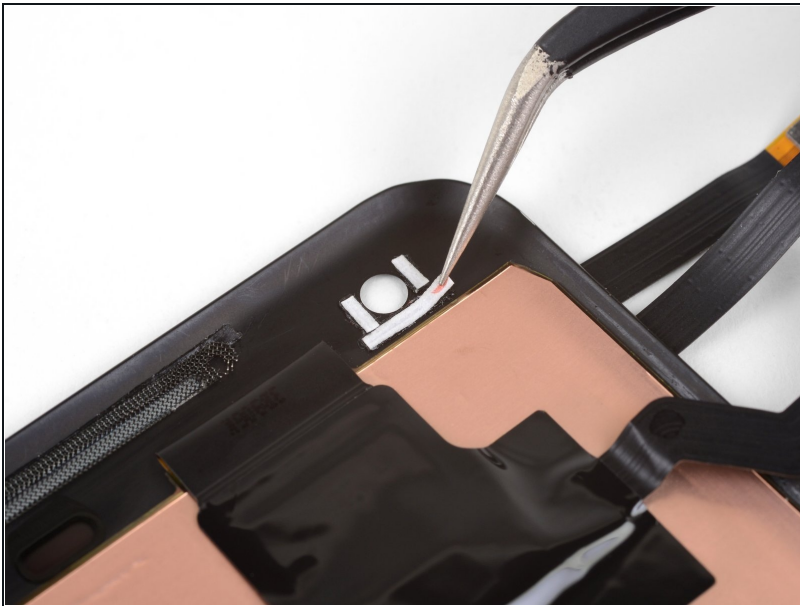
- Use the flat end of a spudger to push the top of the grille down against the adhesive strip.
- Repeat the last three steps to install the lower speaker grille.
 - When installing the lower speaker grille, apply the adhesive strip to the lower edge of the speaker slot, and position the grille with the flat half below the slot.

Step 16



- ① If you're reusing the camera gasket from your old screen, the old adhesive may have stuck to the gasket when you removed it. If this is the case, and the adhesive is still sticky, skip to the last step.
- Cut one strip of 1 mm wide adhesive to be 6 mm (1/4") long.
 - Place the adhesive underneath the front-facing camera hole, parallel to the top edge of the display.
- Cut two 3 mm (1/8") strips of 1 mm wide adhesive.
 - Place the adhesive strips to the left and right of the camera hole, perpendicular to the bottom adhesive strip.
- Gently press the adhesive strips into place on the display with your finger or a spudger.
- ① Make sure all three strips are as close as possible to the camera hole, without overlapping the hole.

Step 17



- Peel the white backing off of all three adhesive strips.

Step 18



- Carefully place the front-facing camera gasket down on top of the adhesive.
 - Make sure that the gasket is centered around the camera hole. If it overlaps the hole at all, it will disrupt the function of the camera.
 - Press the gasket down against the adhesive with your finger or a spudger.
- ✦ During the boot-up process after reassembly, the screen will go through a calibration sequence. Do not touch the screen during this process, as it could result in improper touch calibration and create touch issues.

Compare your new replacement part to the original part—you may need to transfer remaining components or remove adhesive backings from the new part before installing.

To reassemble your device, follow the above steps in reverse order.

Take your e-waste to an [R2 or e-Stewards certified recycler](#).

Repair didn't go as planned? Check out our [Answers community](#) for troubleshooting help.