



Sharper Image SBT5002 Speaker Replacement

This guide shows how to replace the speaker in the woofer.

Written By: Linda Freund



INTRODUCTION


Speakers rely on precisely placed components to convert electronic signals into sound waves. Touching the speaker by pushing or pulling can cause the speaker components to deform. As a result, the speaker will no longer produce an accurate sound. Replacing the speaker is the best repair for speaker damage.

TOOLS:

- [Pin Punch](#) (1)
 - [Phillips #0 Screwdriver](#) (1)
 - [Spudger](#) (1)
 - [Hammer](#) (1)
 - [Phillips #2 Screwdriver](#) (1)
-

Step 1 — Back Panel



 Unplug the speaker before doing any work on it.

- Use a #0 Phillips screwdriver to remove the eight 13mm Phillips head screws from the back panel.

Step 2



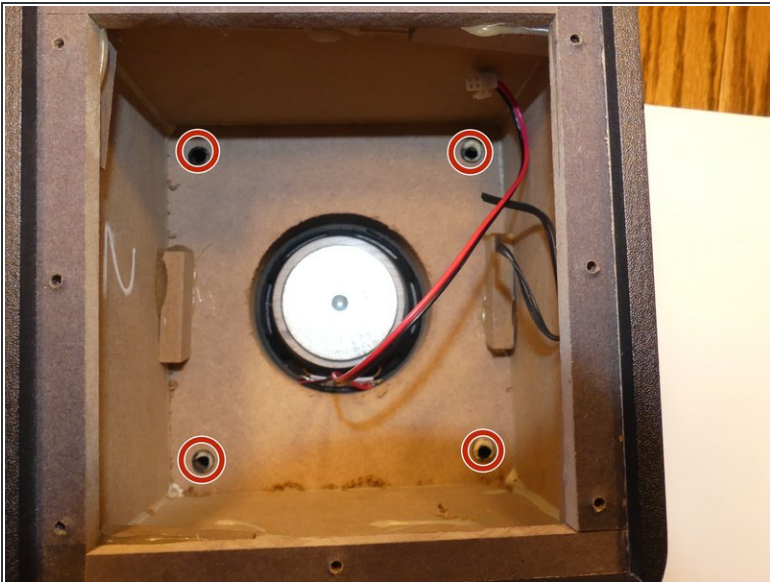
- Remove the back panel.

Step 3 — Speaker



- Remove the snap cable that connects the speaker to the circuit board.

Step 4



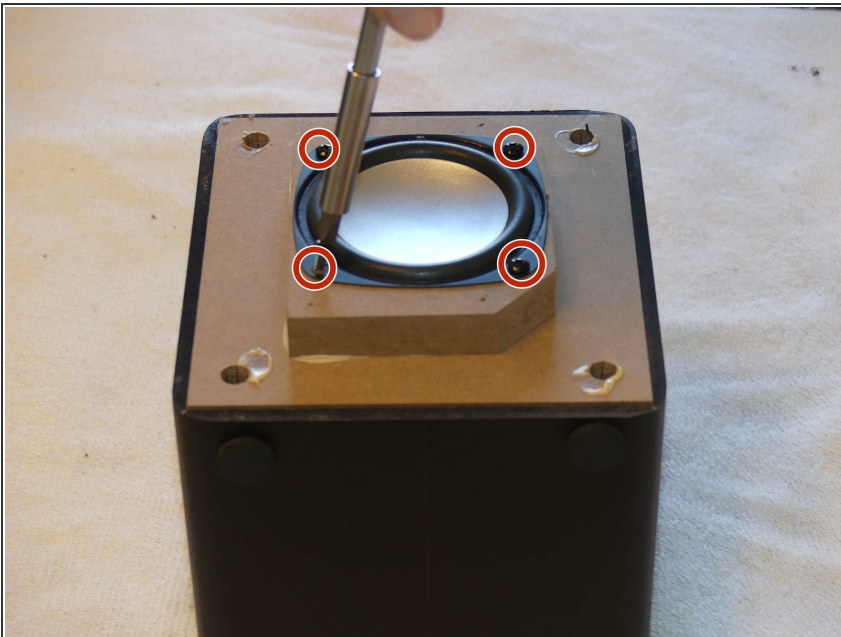
- Use a tap hammer and a punch to release the 4 posts that hold the front panel in place.

Step 5



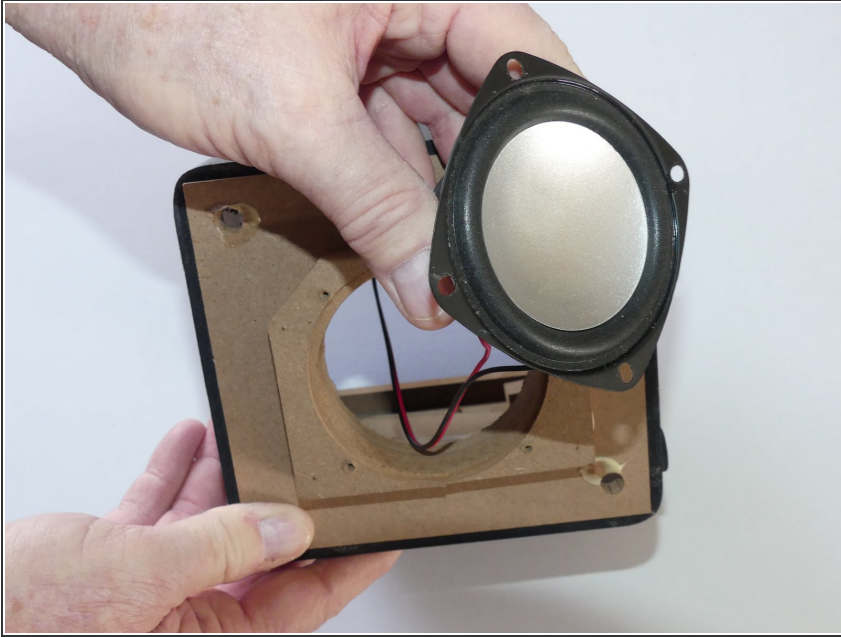
- Use a plastic opening tool or spudger to pry off the front panel.

Step 6



- Use a #4 Phillips screwdriver to remove the four 9.5mm screws that secure the subwoofer to the woofer box.

Step 7



- Remove the defective speaker.

To reassemble your device, follow these instructions in reverse order.