



Samsung Galaxy Tab A 8.0 Display Assembly Replacement

Replacement guide for the OEM Samsung Galaxy...

Written By: Richard



INTRODUCTION

Replacement guide for the OEM Samsung Galaxy Tab A 8.0 (SM-T350) display assembly.

TOOLS:


Metal Spudger Set (1)
Precision Tweezers Set (1)
Spudger (1)
Tweezers (1)
Phillips #0 Screwdriver (1)

PARTS:

Samsung Galaxy Tab A 8.0 Screen (1)

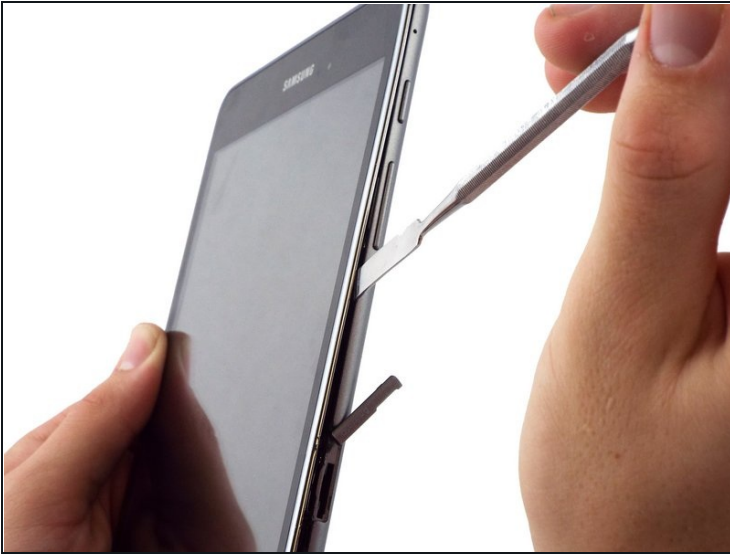
Step 1 — Battery



 **Make sure the device is turned off before attempting to disassemble it.**

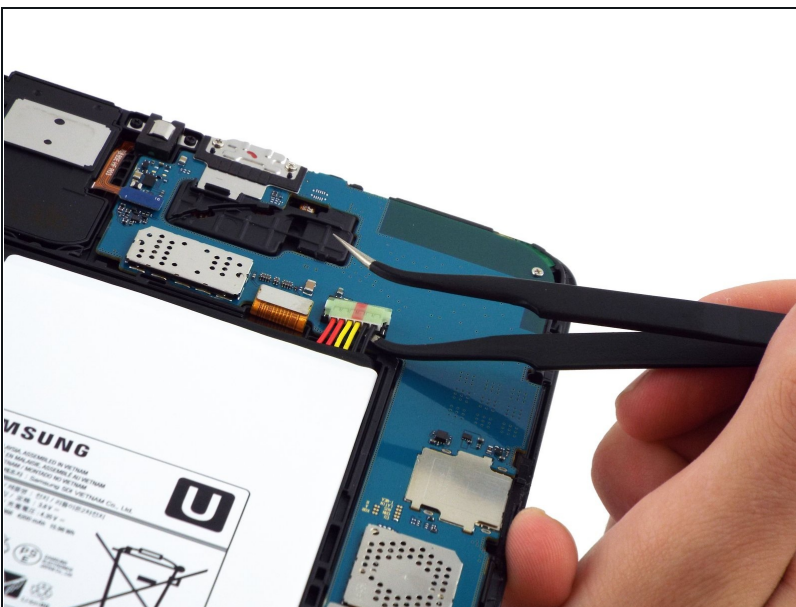
- At the top portion of the memory card slot, use the small metal spudger to create separation between the back cover and the rest of the device.
- ① The small metal spudger is only used to create separation between the back cover and the rest of the device, not to remove the back cover.
- ① If possible, try to use a normal nylon spudger to separate the back cover, as it is much softer and less likely to mar/scratch the device.

Step 2



- Use the intermediate metal spudger in place of the small metal spudger to remove the back cover. This is done by sliding the intermediate metal spudger around the perimeter of the device, beginning at the top portion of the memory card slot.
- The second picture shows the internal portion of the device once the back cover is removed.

Step 3



- Disconnect the electrical connector from the motherboard using the bent precision [tweezers](#).

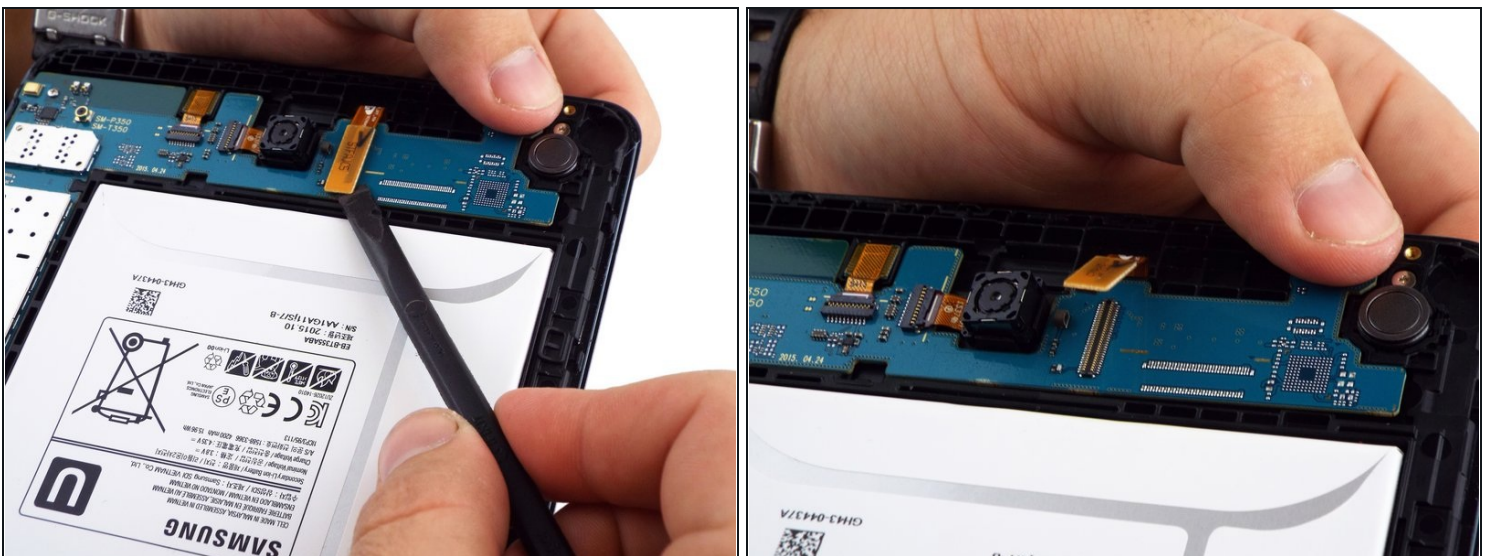
⚠ Avoid touching the motherboard with the tweezers. Metal tools such as the tweezers can scratch the motherboard and potentially cause damage.

Step 4



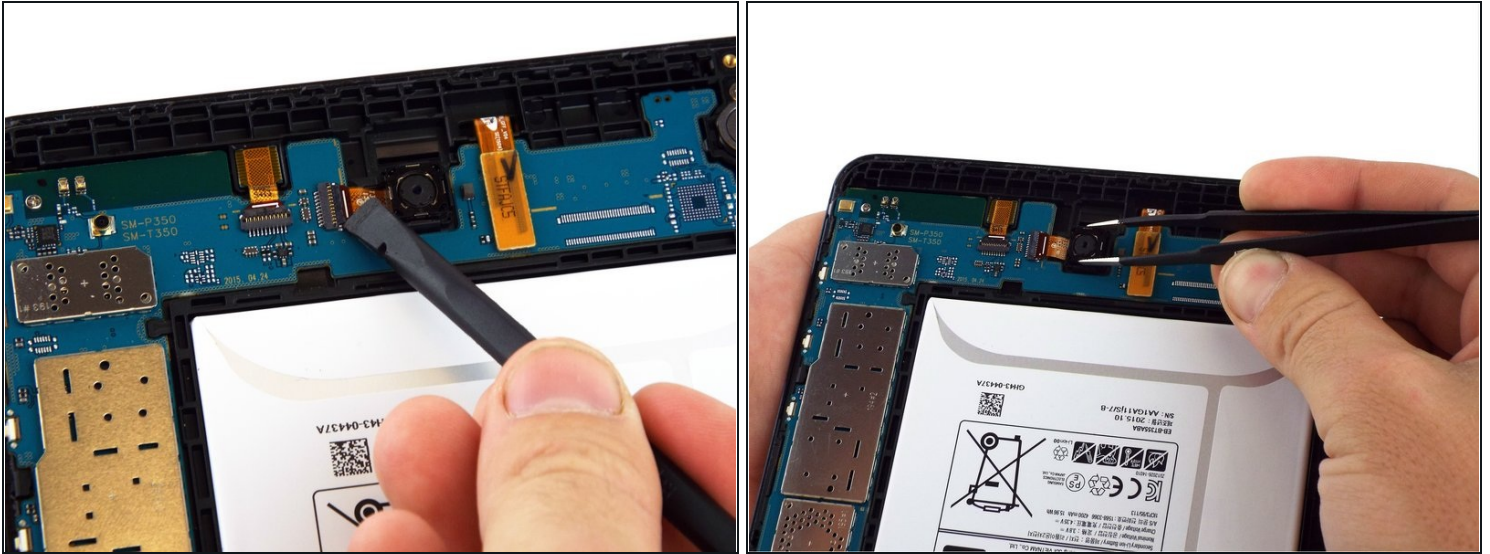
- Use the flat end of the plastic spudger to pry the battery apart from the rest of the device.
- ① An alternative method is to loosen the battery using the plastic spudger, and then to remove the battery by pulling on the paper tab that says "Pull (Hands Only)."
- Once the back cover and battery are removed, the device should look like as illustrated in the second picture.

Step 5 — Display Assembly



- Use a spudger to lift up and release the press-fit display cable connector from the motherboard.

Step 6



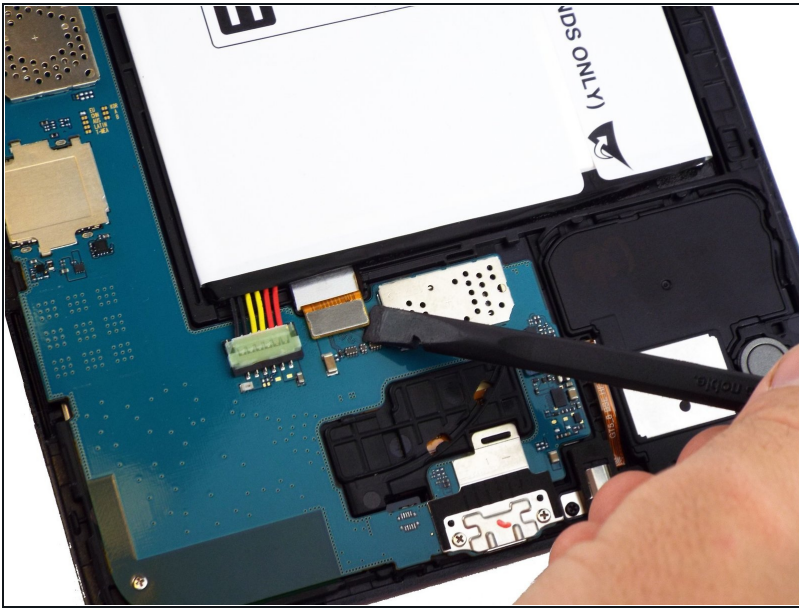
- Use a spudger to lift up and release the ZIF connector; gently pull the rear facing camera ribbon cable free.
- Use a pair of [tweezers](#) to gently secure the camera and lift it out of the frame.
 - ① If you're unable to secure the camera with tweezers, slide an opening pick between the frame and the camera and lift the camera out.

Step 7



- Use a spudger to flip the front-facing camera ZIF connector up; gently pull the ribbon cable free.
- Use tweezers to gently remove the front facing camera from the frame.

Step 8



- Use the flat end of a spudger to lift up and disconnect the LCD screen press-fit connector.

Step 9



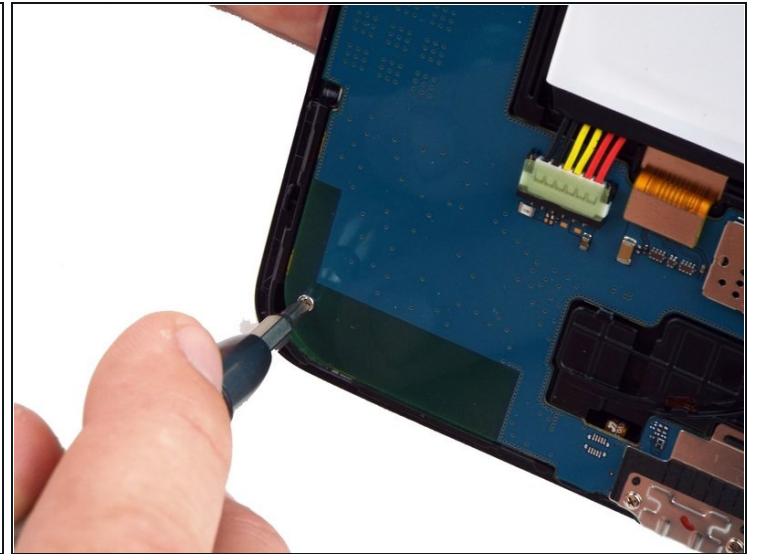
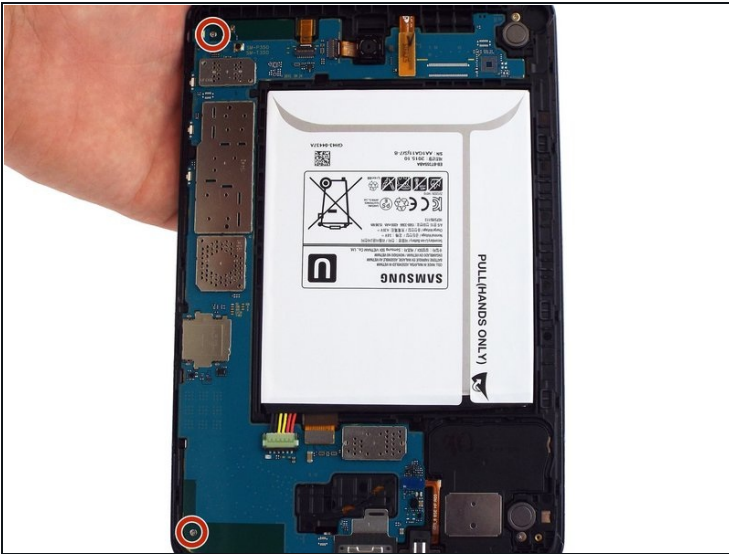
- Use the flat end of a spudger to lift up and disconnect the 3.5mm headset jack press-fit connector.

Step 10



- Use a PH000 screwdriver to remove the two 3 mm screws that connect the USB port shield to the midframe.

Step 11



- Use a PH000 screwdriver to remove the two 3 mm screws on the left side of the motherboard.

Step 12



- Lift the motherboard free from the power and volume button side.
- You may use a spudger to assist in gently lifting the motherboard up from the button side.
- A small plastic bracket secures the motherboard to the frame; lift the motherboard from the power and volume button side first, and slide away from the bracket.

To reassemble your device, follow these instructions in reverse order.