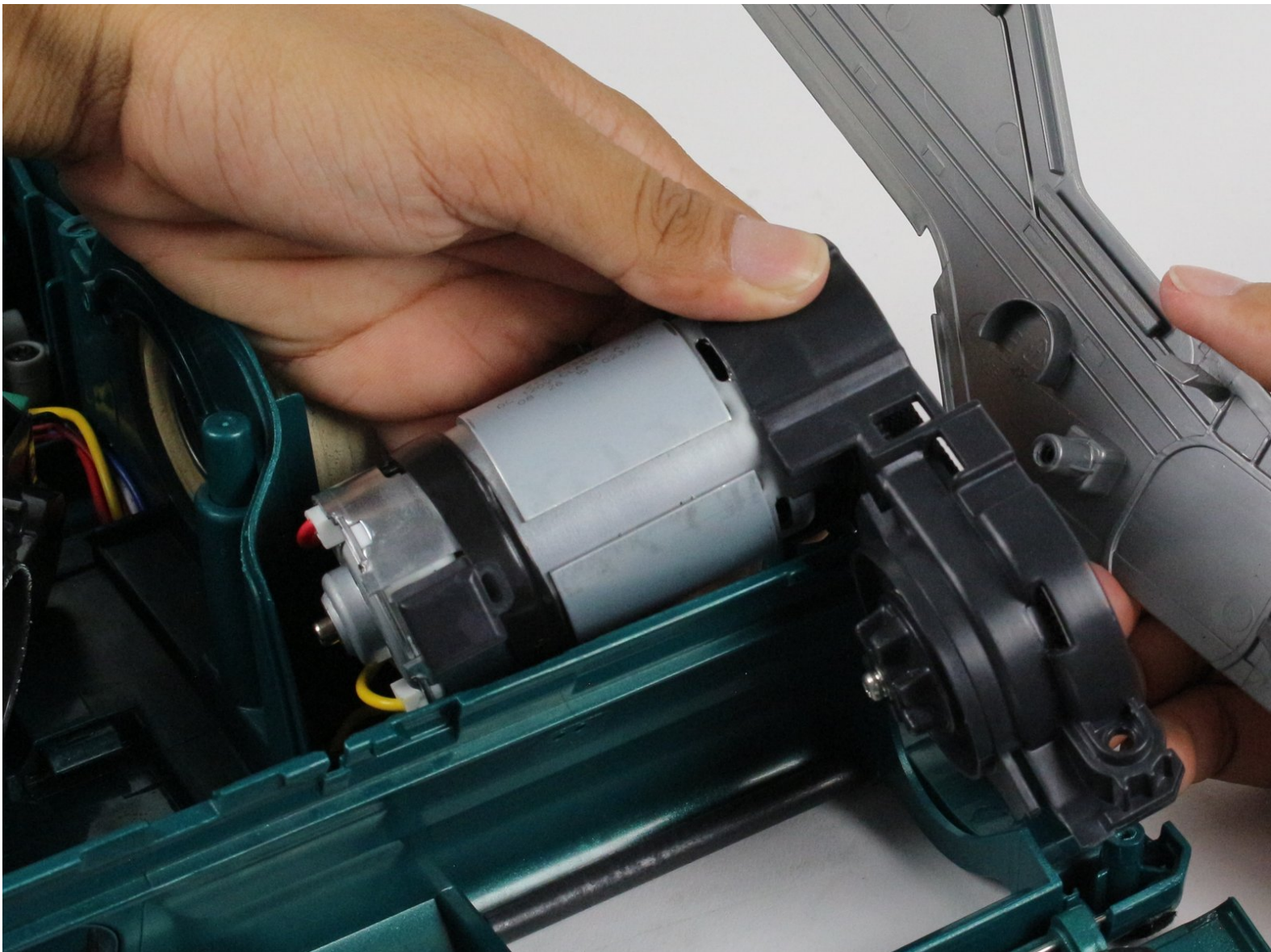




Shark Rocket Powerhead AH401 Motor Replacement

This guide will explain how to remove the Shark Rocket Powerhead AH401 brushroll motor if it becomes damaged or too old.

Written By: Shobhit Dabral



INTRODUCTION

If your motor stops working this guide will show you how to replace it. Previous disassembly of the vacuum must already be done in order to get to the motor.

TOOLS:

- [T15 Torx Screwdriver](#) (1)
 - [T10 Torx Screwdriver](#) (1)
 - [Phillips #2 Screwdriver](#) (1)
 - [Cutting Plier](#) (1)
-

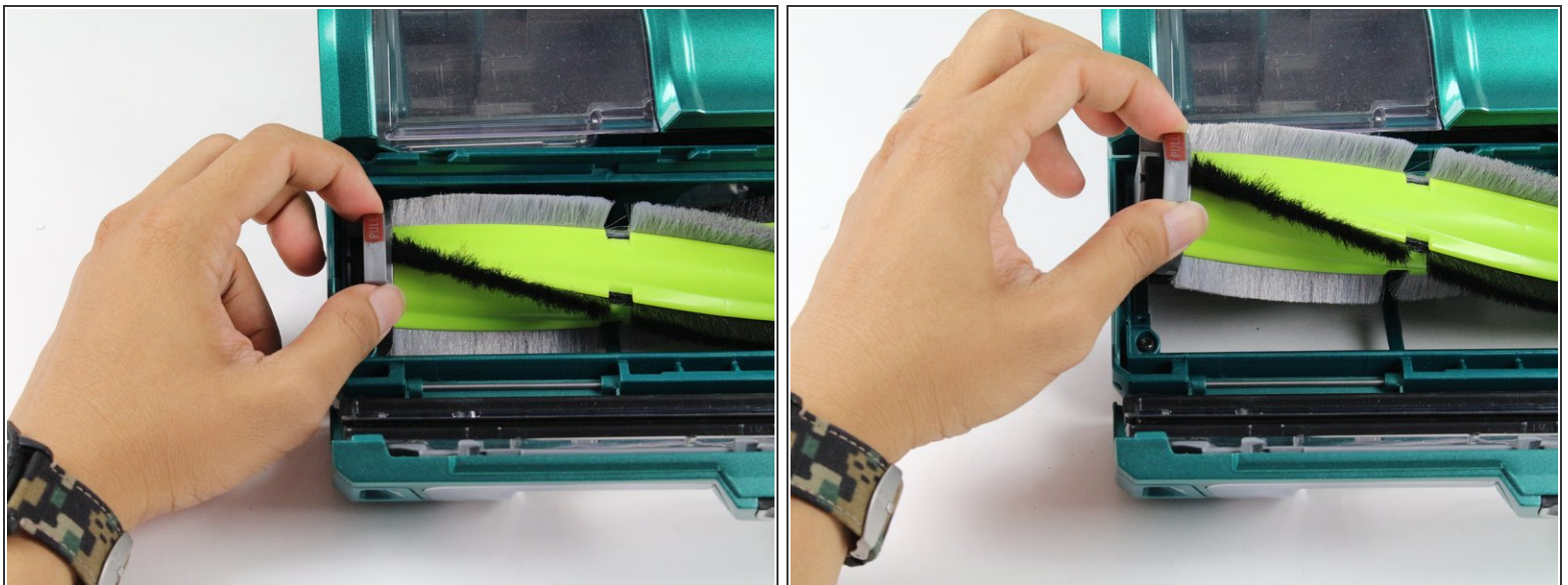
Step 1 — Brushroll



 Ensure the device is turned off and unplugged from any power source before beginning work.

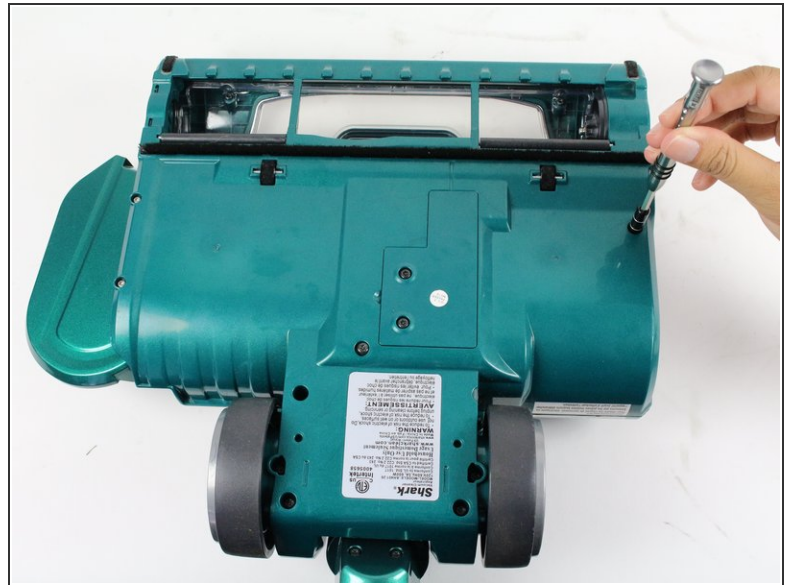
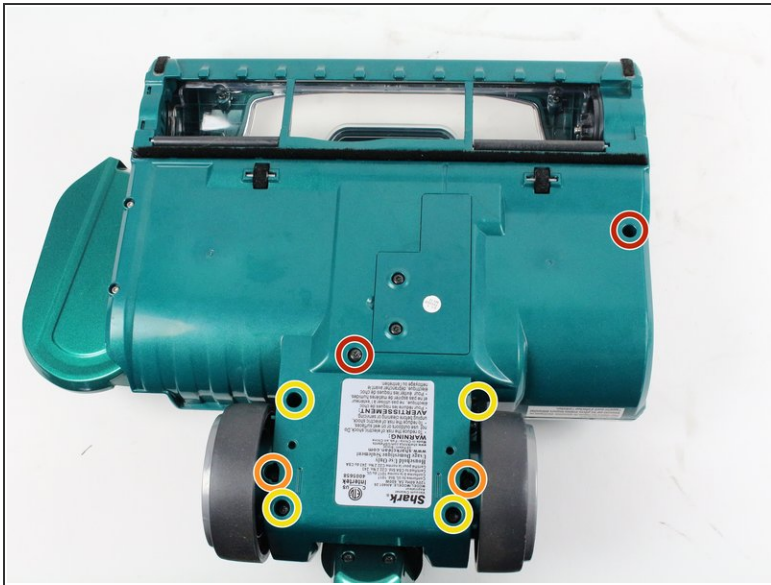
- Locate the two tabs with white arrows on them. They are located on either side of the brushroll cover.
- Slide the tabs away from the center of the vacuum to unlock the brushroll cover.
- Lift the brushroll cover upward.

Step 2



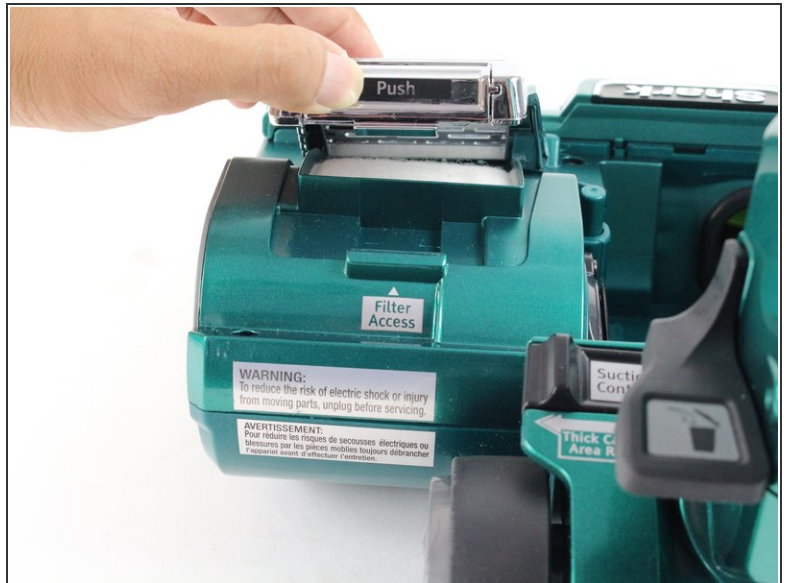
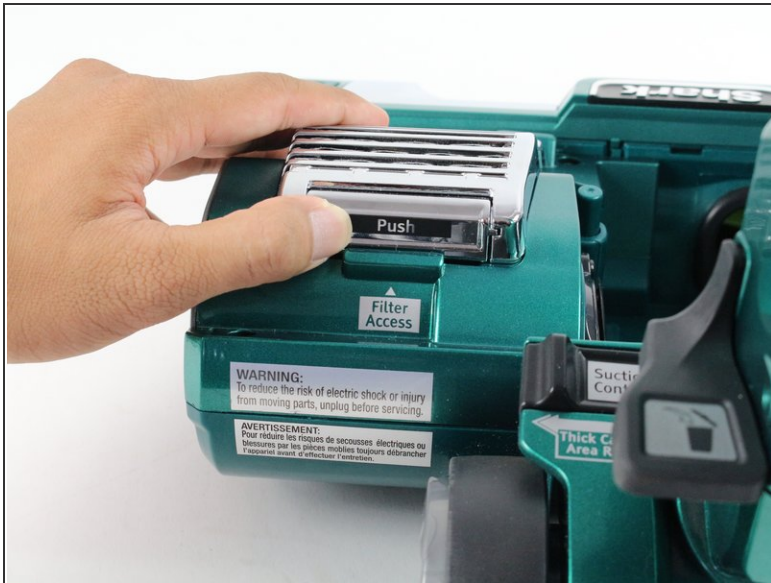
- Lift the brushroll out by pulling the tab labeled "pull".

Step 3 — Back Panel Screws



- Flip the device over so that the bottom is face up.
- Remove the eight screws shown by rotating counter-clockwise with a T15 Torx screwdriver.
 - Two 14 mm Torx screws
 - Two 16 mm Torx screws
 - Four 21 mm Torx screws

Step 4 — Filter Grille



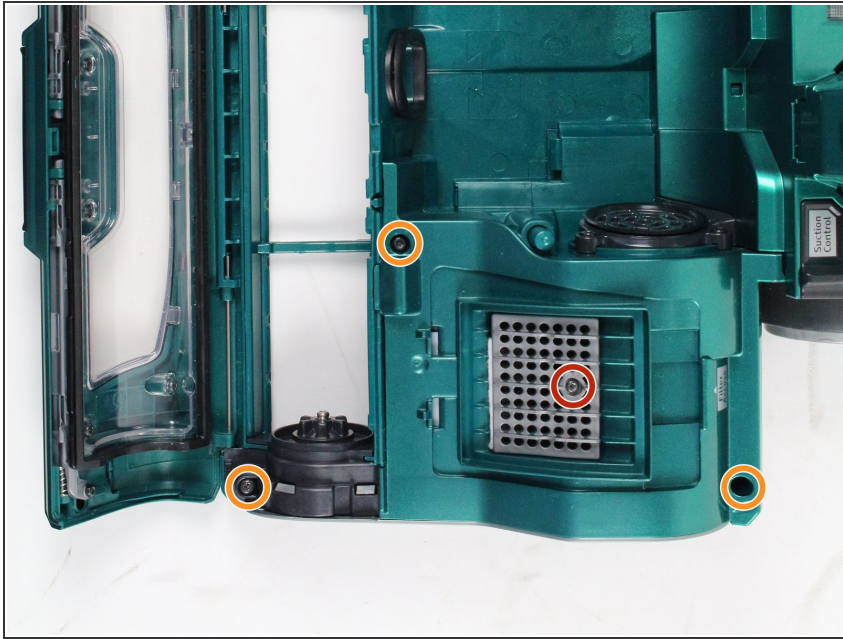
- Push inward on the top of the filter grille where it says "Push."
- Lift the filter grille upward.

Step 5



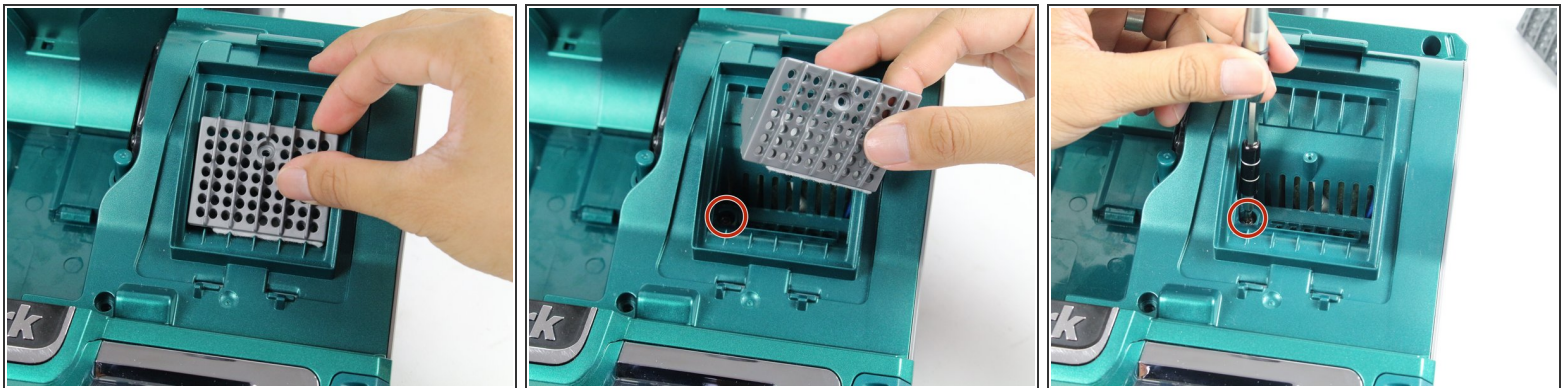
- Lift gently and pull the grille up towards you until it releases.
- ⓘ The post-motor filter is underneath the filter grille.

Step 6 — Belt



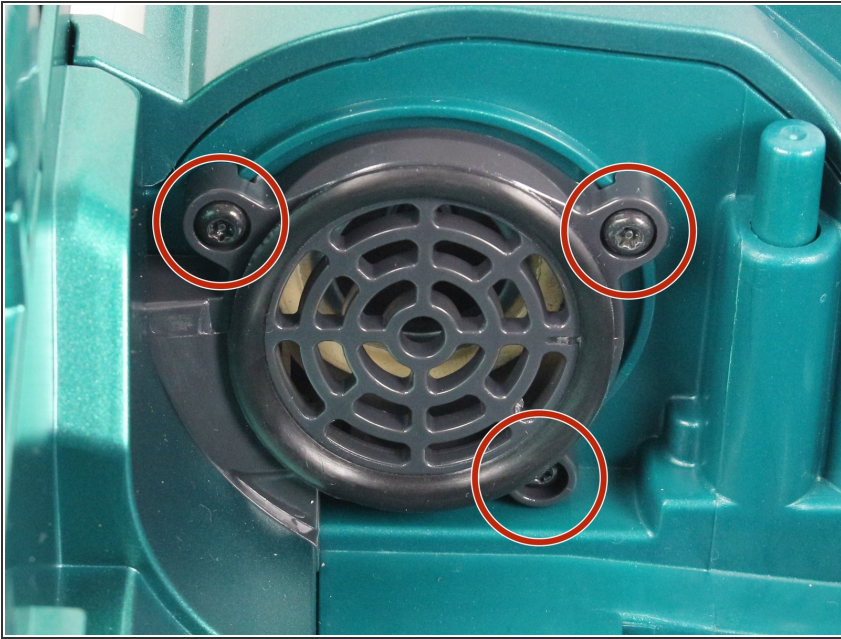
- Remove the four screws by rotating counter-clockwise:
 - One 12 mm screw with a T10 Torx screwdriver
 - Three 14 mm screw with a T15 Torx screwdriver

Step 7



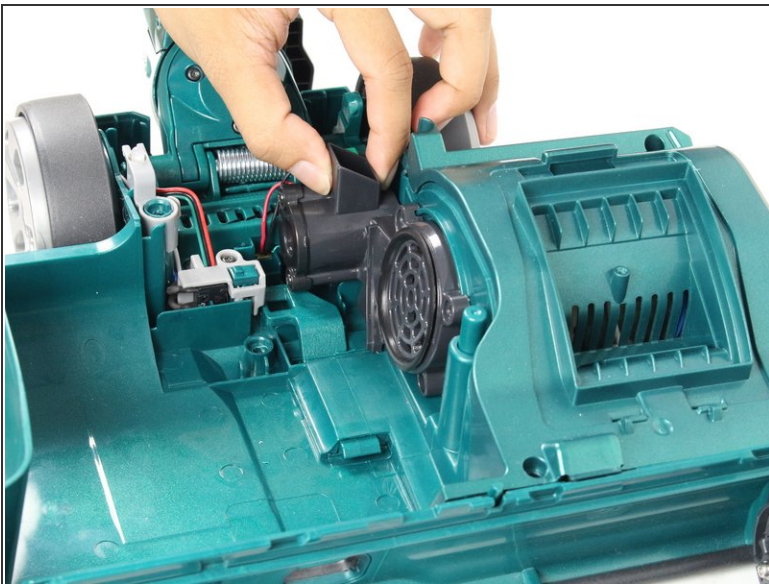
- Remove the grey filter plate by simply lifting upward.
- Remove the 14mm screw by rotating counter clockwise with a T10 Torx screwdriver.

Step 8



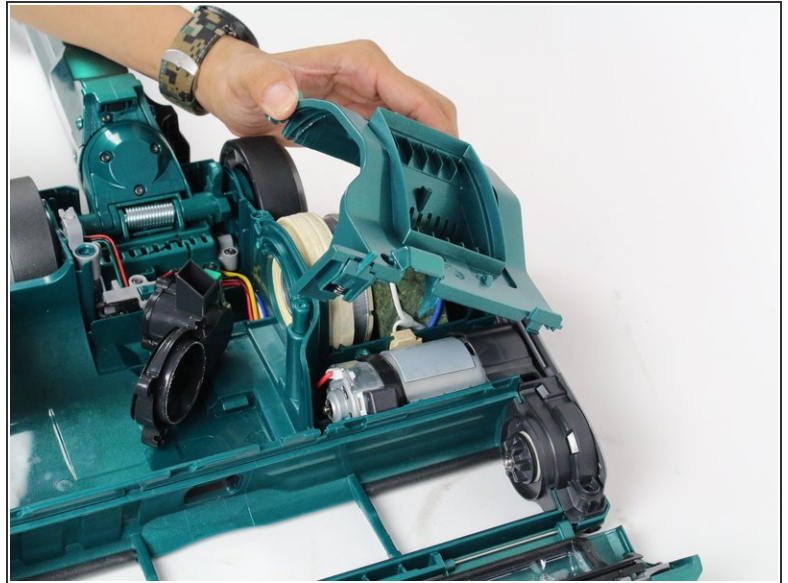
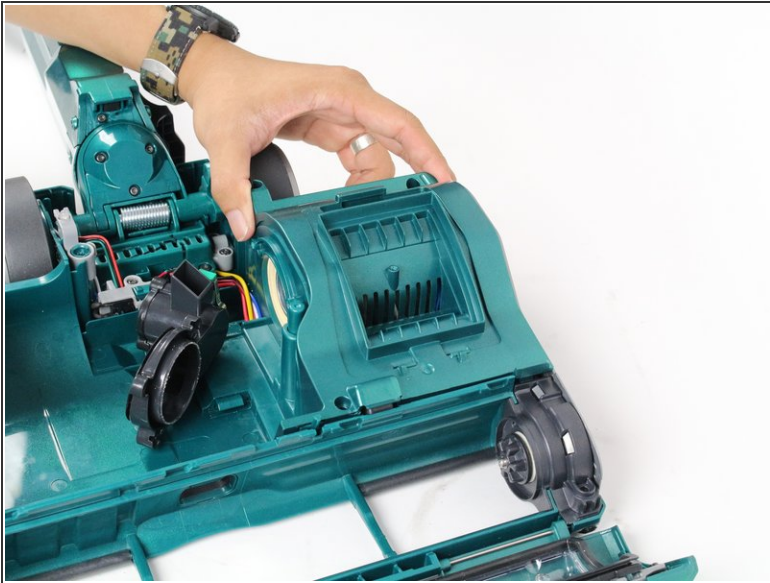
- Remove three 10mm screws by rotating counter-clockwise with a T15 Torx screwdriver.

Step 9



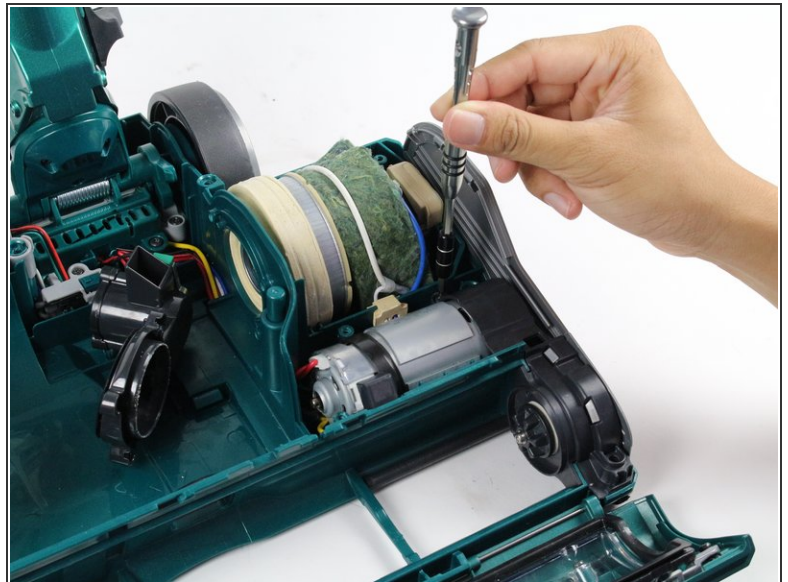
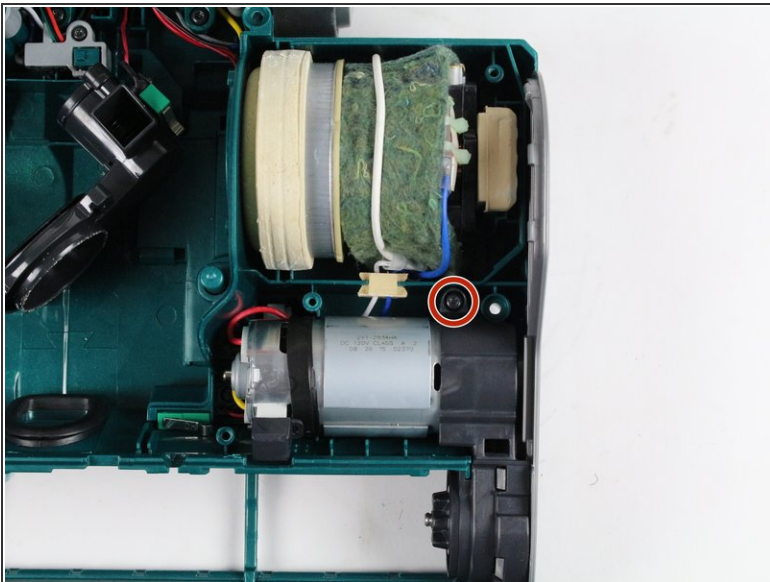
- Remove the airpath grille from the side of the motor compartment by pulling out and away from the attached area.

Step 10



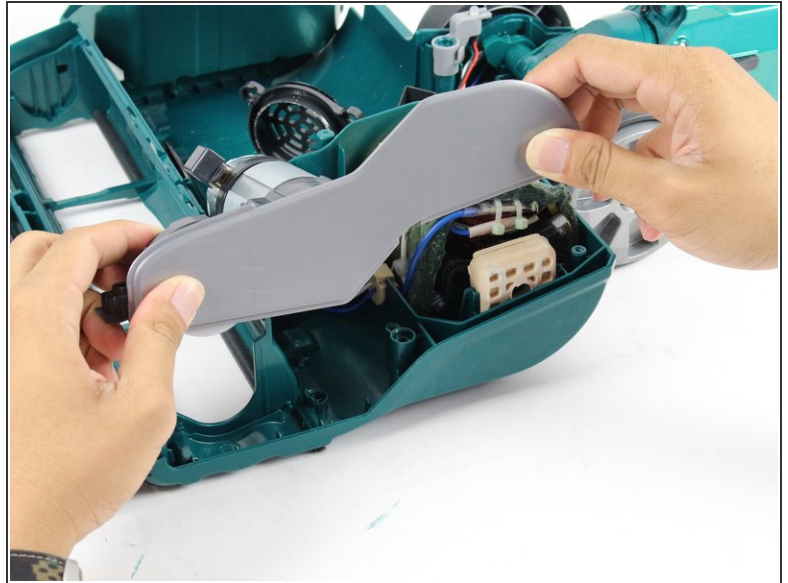
- Remove the motor compartment panel by lifting up and away from the device.

Step 11



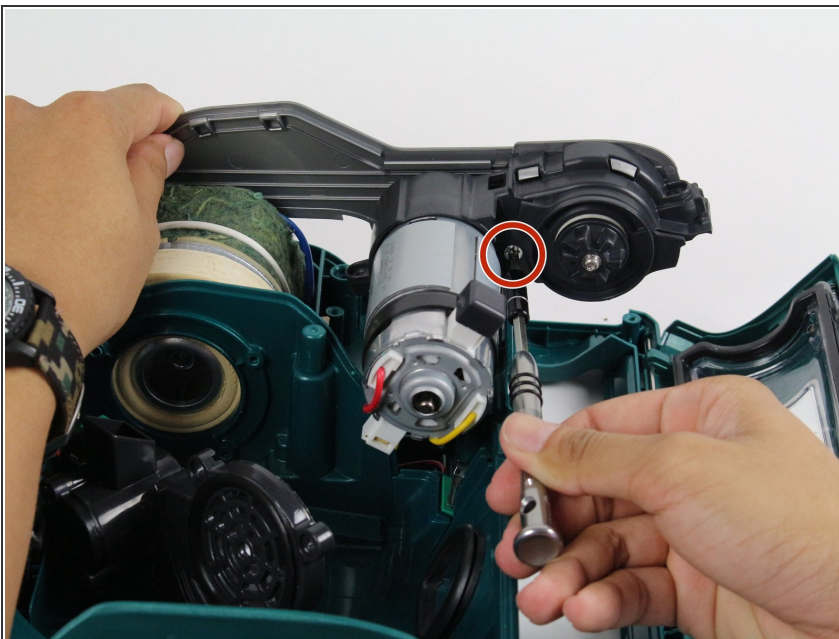
- Remove one 14mm screw by rotating counter-clockwise with a T15 Torx screwdriver.

Step 12



- Disconnect the motor side panel by lifting the motor and panel up and out.
- ⓘ This step may require some wiggling to loosen the panel before it becomes free.

Step 13



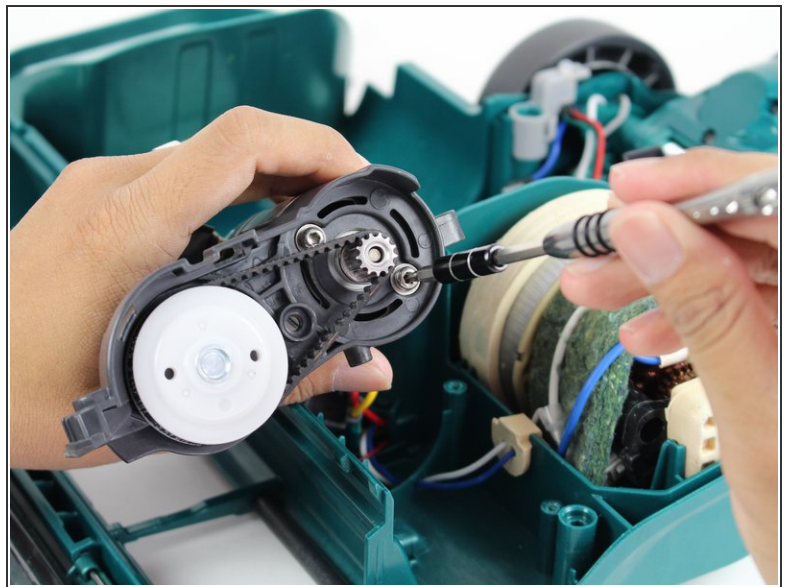
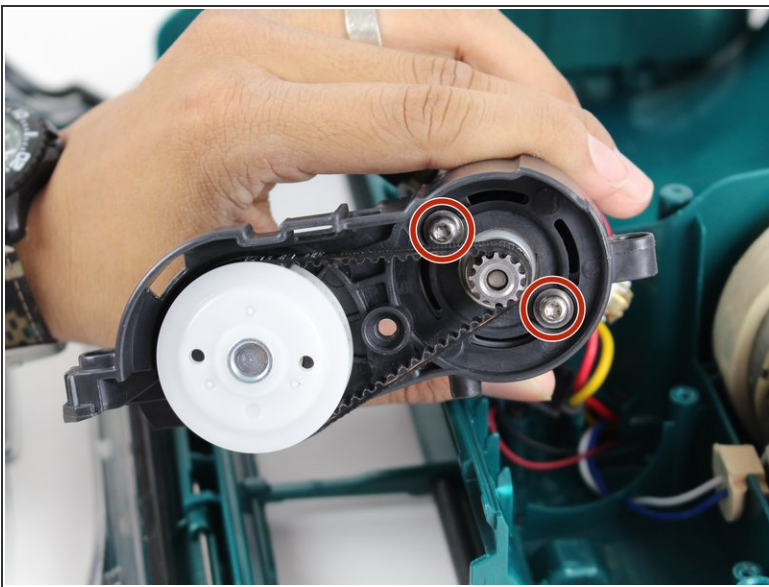
- Remove one 9mm screw by rotating counter-clockwise with a Phillips #2 screwdriver.
- ⓘ This screw allows the side panel to be removed.

Step 14



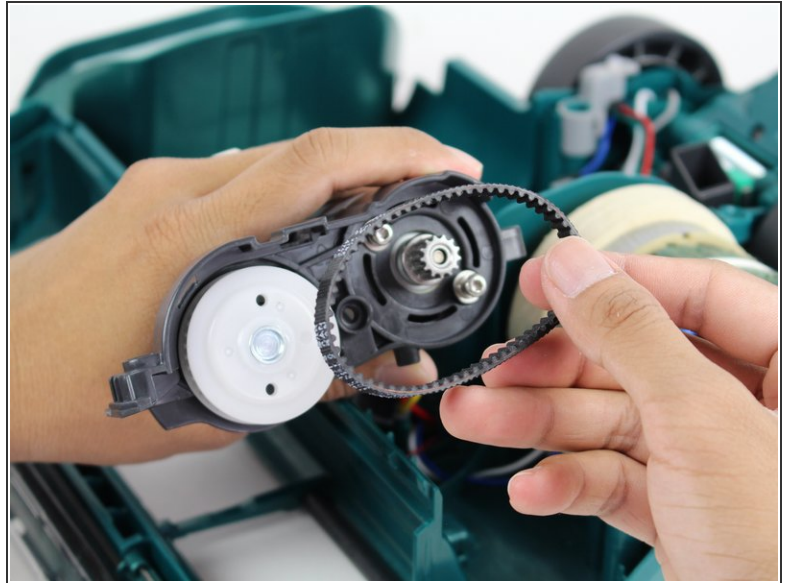
- Remove the side panel by pulling the panel out and away from the motor.
- ⓘ The side panel is connected with clips which connect near the brushroll axle.

Step 15



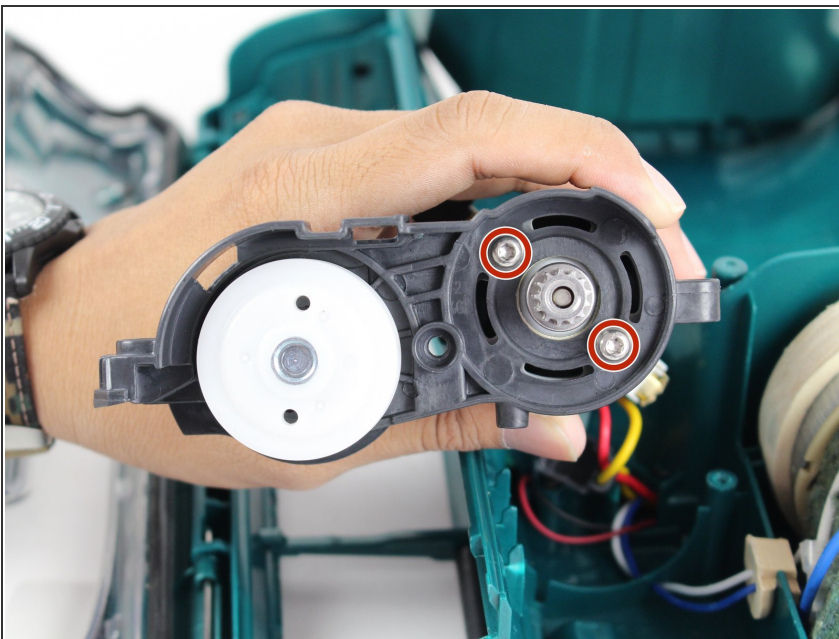
- Loosen the two screws by rotating counter clockwise with a T15 Torx screwdriver.
- ⓘ The screws only need to be loosened in order to free the belt.

Step 16



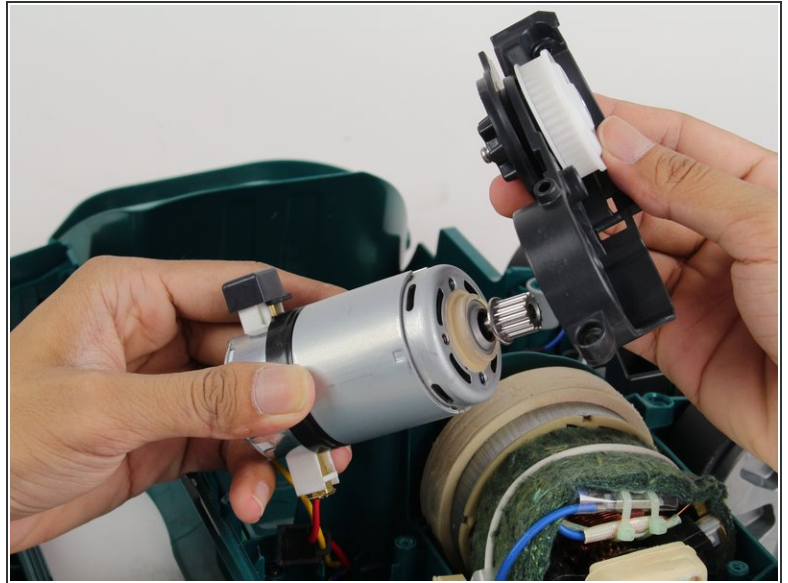
- Remove the belt by pulling the belt away from the axle.

Step 17 — Motor



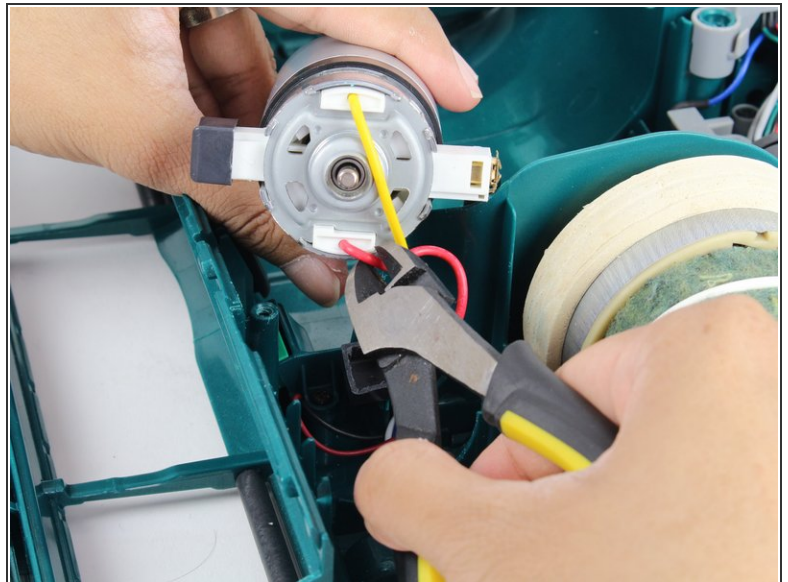
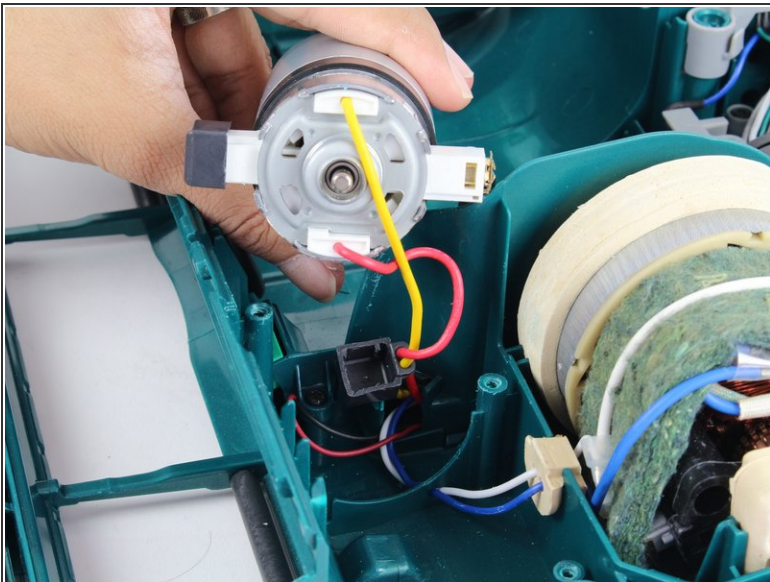
- Remove two 16mm screws by rotating counter-clockwise with a T15 Torx screwdriver.

Step 18



- Remove the belt-assembly unit by pulling the belt-assembly unit away from the motor.

Step 19



- Rotate the motor unit over so that the wires are exposed.
- Cut wires with cutting pliers to release the motor.

To reassemble your device, follow these instructions in reverse order.