



OnePlus 5 Battery Replacement

This is a step-by-step guide on how to replace a faulty or broken battery in the OnePlus 5 device.

Written By: Arthur Shi



INTRODUCTION

Follow this guide to remove and replace the battery for the OnePlus 5. The hardest part is getting the frame clips free. Once that is done, the rest comes out easily.

If your battery is swollen, [take appropriate precautions](#).

For your safety, discharge your battery below 25% before disassembling your phone. This reduces the risk of a dangerous thermal event if the battery is accidentally damaged during the repair.



TOOLS:

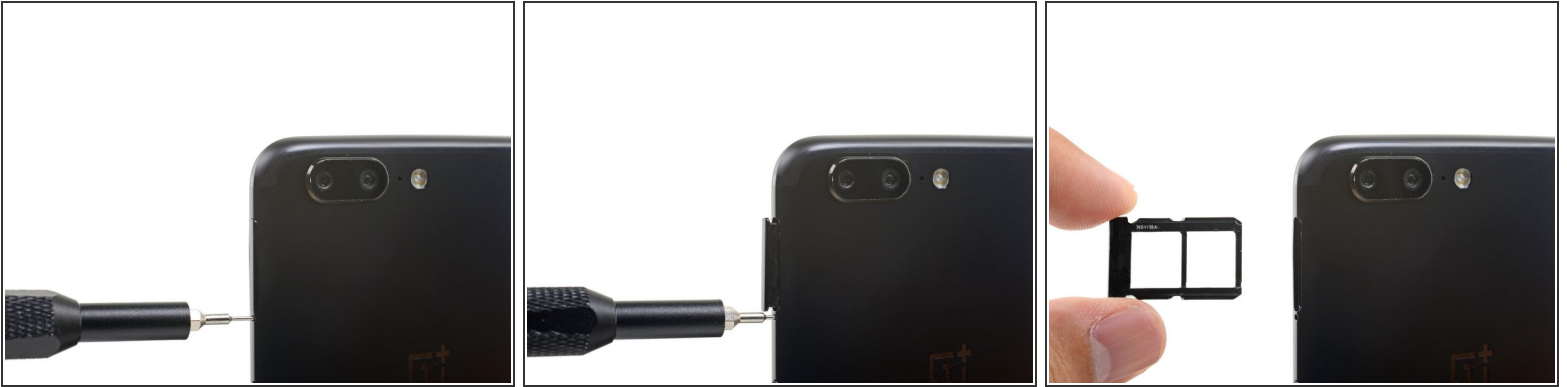
- [SIM Card Eject Tool](#) (1)
- [T2 Torx Screwdriver](#) (1)
- [Suction Handle](#) (1)
- [iFixit Opening Tool](#) (1)
- [Spudger](#) (1)
- [Phillips #00 Screwdriver](#) (1)
- [Tweezers](#) (1)



PARTS:

- [OnePlus 5/5T Replacement Battery](#) (1)

Step 1 — SIM Card Tray



- Insert a SIM card eject tool, bit, or a straightened paperclip into the small hole below the SIM card tray, located near the rear cameras on the edge of the phone.
 - Press firmly to eject the tray.
- ☒ During reassembly, be sure to properly orient the SIM tray you you insert it.

Step 2 — Back Cover



- Remove the two 2.6 mm T2 screws straddling the USB-C port on the bottom edge of the phone.

Step 3



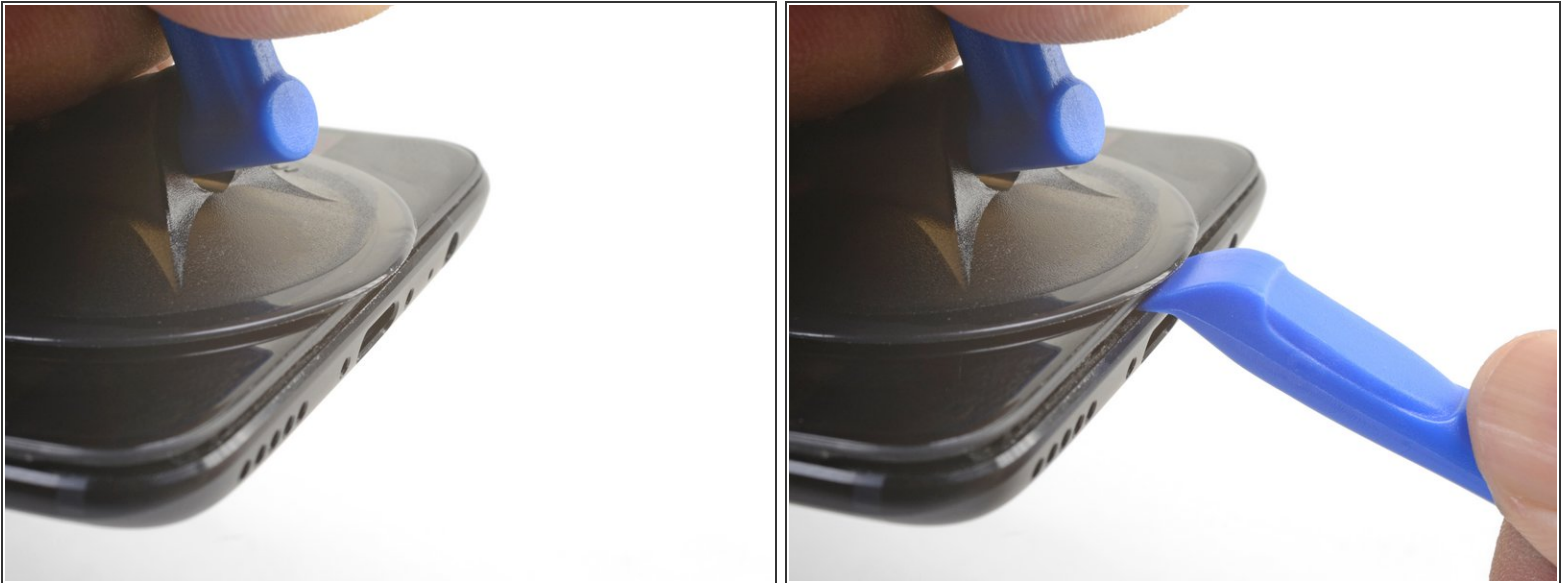
⚠ There is a high risk of damaging the display panel if this opening procedure is improperly followed.

i The following four steps show how to pry the rear case from the plastic frame. Read through the steps first before attempting the procedure.

⚠ There are two different seams between the body and the screen of the phone:

- *Display panel seam*: This seam is part of the display assembly. **Do not pry** at this seam, or you will separate and damage the display panel.
- *Frame seam*: This is where the plastic frame meets the back cover. **Only pry at this seam.**
- There are twelve clips that hold the frame against the rear case. Be aware of their location as you pry the back cover off in the following steps.

Step 4



- ⓘ As you work, try not to accidentally power on the phone. If you do, turn the phone off before resuming disassembly.
- Place a suction cup near the bottom edge of the display.
- Pull on the suction cup with strong steady force.
- Press the edge of an opening tool straight into the frame seam near the suction cup until the edge wedges between the plastic frame and the back cover's lip.
- ⓘ Due to tight tolerances, this will take substantial force. Using a new opening tool with an unmarred edge will help with this step.

Step 5



- Once the opening tool's edge is wedged in position, carefully slide the tool along the bottom edge of the phone.
- Carefully guide the opening tool around the left corner of the phone while keeping the tool's edge within the seam.

Step 6



- Lever the opening tool to release the first clip from the frame.

Step 7





- Continue sliding the opening tool along the long edge, releasing the clips along the way.
- ⓘ The last clip in the top-left corner near the front-facing camera is recessed and can be difficult to release. Take your time and use the flat end of a spudger or an opening pick to help.


Step 8



- With the bottom and left edge of the phone freed, gently wiggle the frame to release the top and right edge clips.

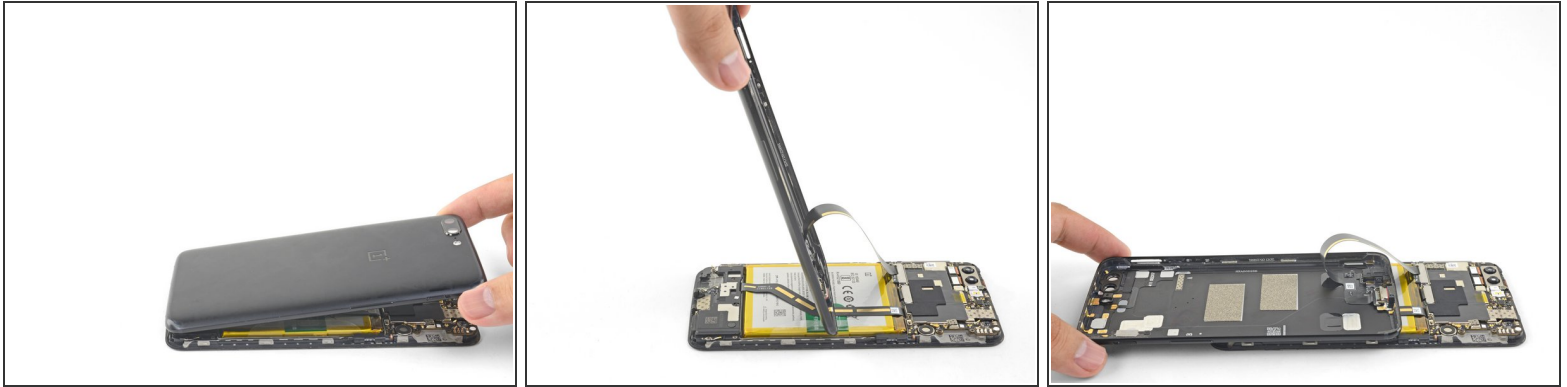
 **The frame is still connected to the back cover by a long flex cable. Do not remove the back cover.**

 During reassembly, pause here to test your phone's functionality before securing the back cover.

 To reinstall the back cover:

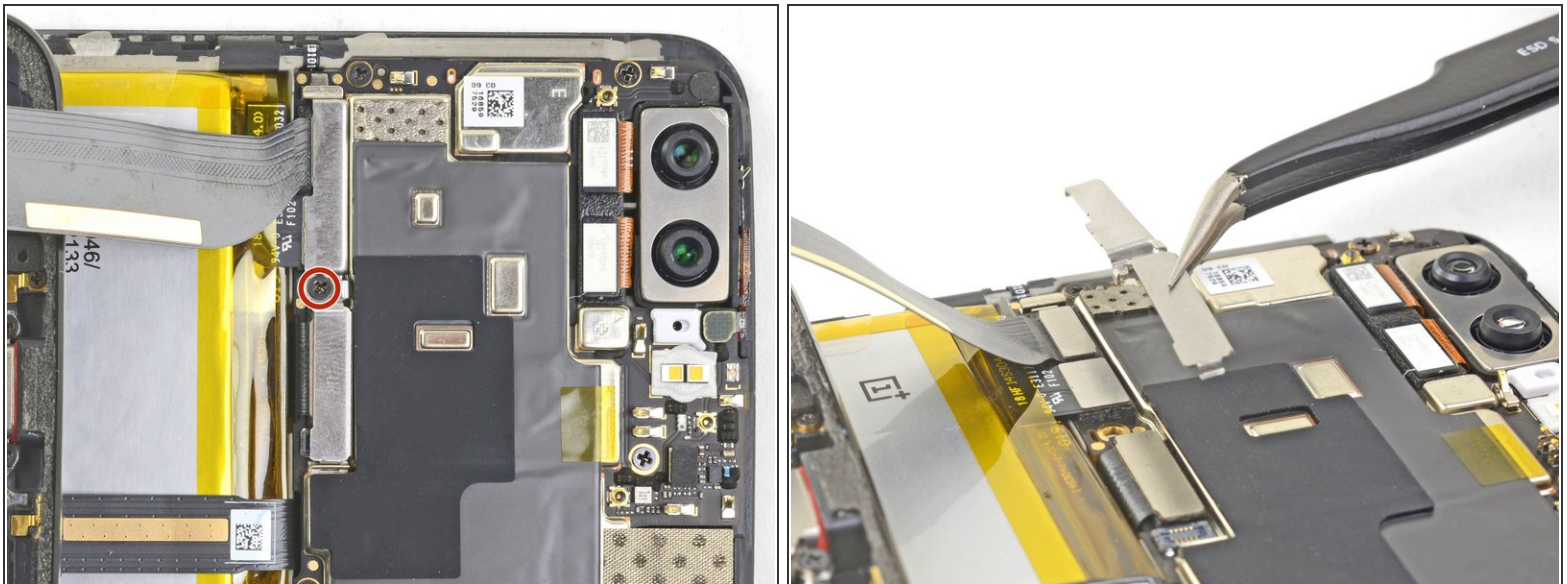
- [Align the top edge of the frame](#) to the back cover and ensure that the top clips slip into place.
- [Squeeze along the long edges of the phone](#) to snap the remaining clips into place.

Step 9



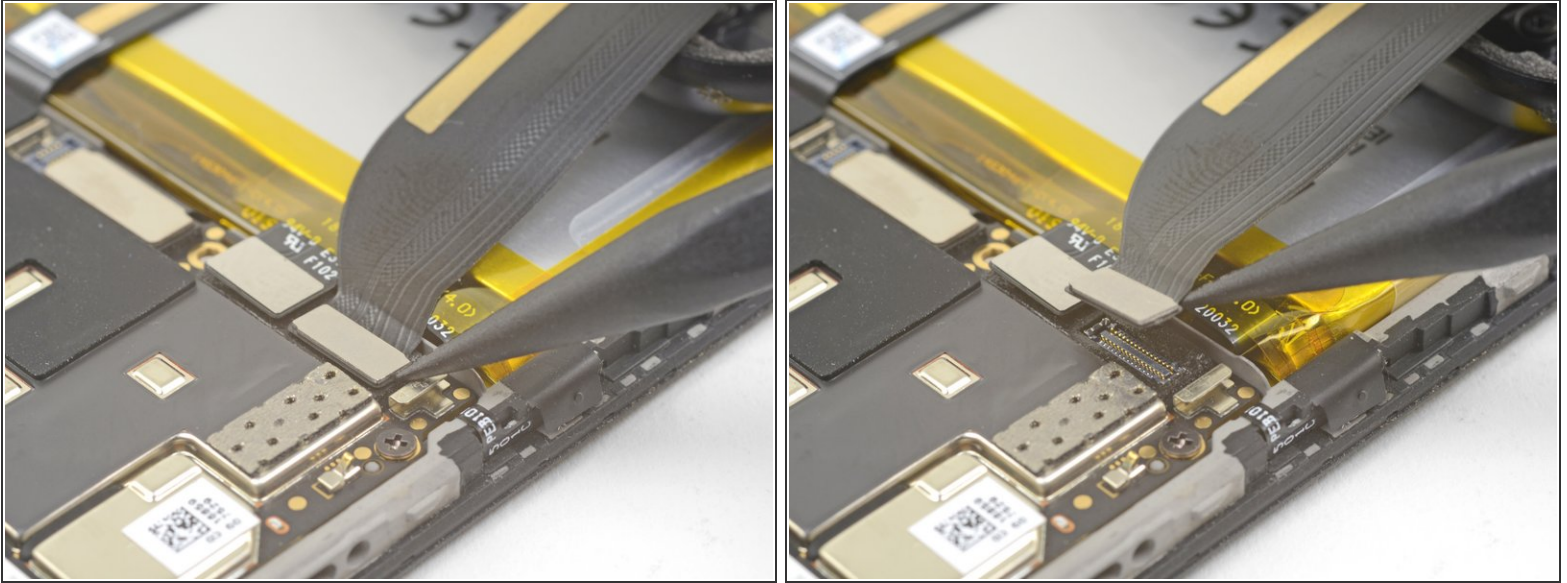
- With all the clips released, flip the phone over so that the display is face-down.
- Swing the back cover around and rest it on top of the exposed frame.
- ⓘ Be careful not to stress the flex cable connecting the back cover and the frame.

Step 10



- Remove the 2.6 mm Phillips screw holding the cable bracket above the battery in place.
- Lift up and remove the cable bracket.
- ☑ To reinstall the bracket, [position one end into place](#), and bend the bracket slightly to spring the other end into place.

Step 11



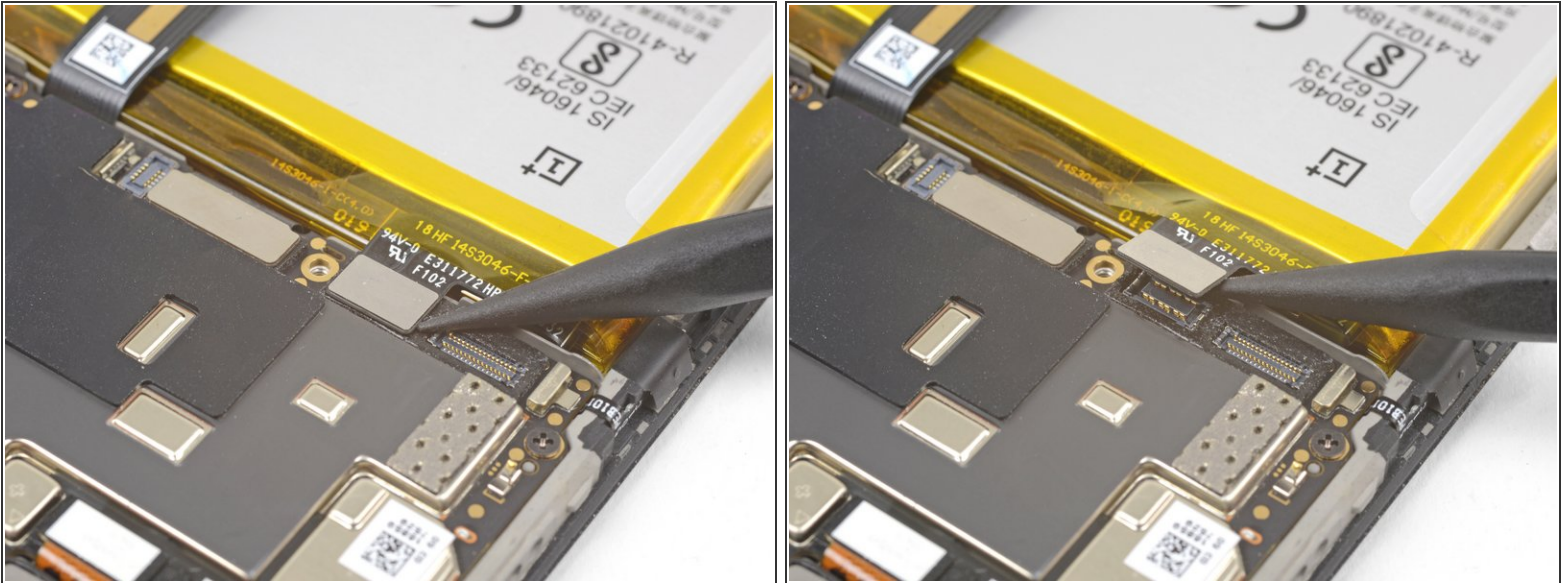
- Use the point of a spudger to pry up and disconnect the back cover flex cable from its socket.
- i** To re-attach [press connectors](#) like this one, carefully align and press down on one side until it clicks into place, then repeat on the other side. Do not press down on the middle. If the connector is misaligned, the pins can bend, causing permanent damage.

Step 12



- Remove the back cover.

Step 13 — OnePlus 5 Battery Disconnect



- Use the point of a spudger to pry up and disconnect the battery connector from its socket.

Step 14 — Loudspeaker



- Remove the six 2.6 mm Phillips screws securing the loudspeaker to the frame.

Step 15



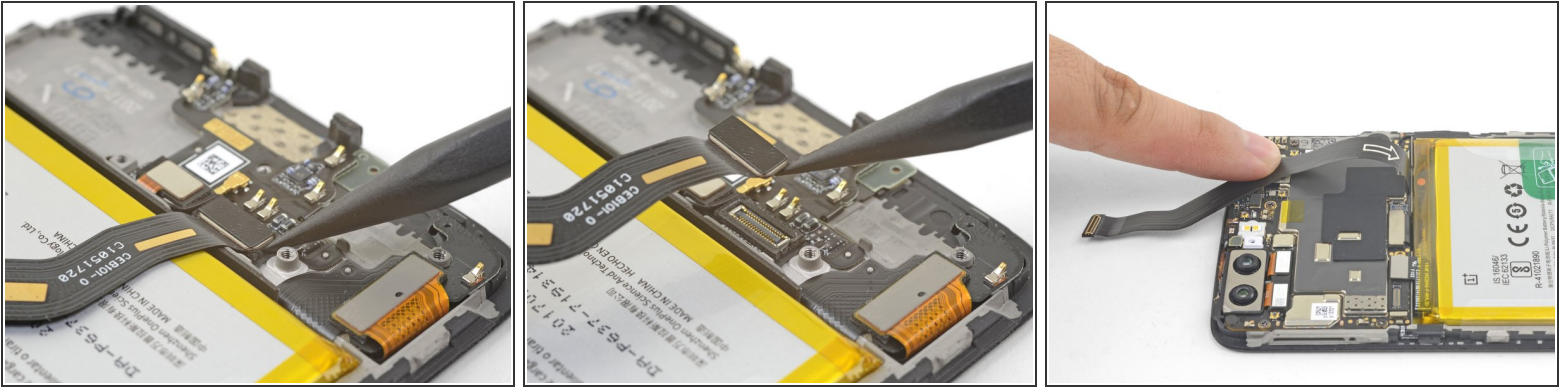
- Insert the flat end of a spudger into the corner of the loudspeaker assembly and pry slightly, loosening the loudspeaker from its recess.

Step 16



- Remove the loudspeaker.
- ★ To reinstall the loudspeaker, align the loudspeaker's bottom edge to the frame, then press the assembly into place.
- i During reinstallation, make sure that the [display cable connector](#) under the loudspeaker assembly is still securely fastened.

Step 17 — OnePlus 5 Interconnect Cable Disconnect



- Use the point of a spudger to pry up and disconnect the interconnect flex cable from the socket.
- ⓘ If you are replacing the battery, bend the interconnect flex cable away from the phone and secure it out of the way with a rubber band or tape.

Step 18 — Battery



- Peel the green pull tab up from the battery.

Step 19



- Brace the phone frame against the table.
- Using a strong, steady force, pull the green pull tab upwards until the battery loosens from its recess.
- ① If you are having a hard time, apply some high concentration (over 90%) isopropyl alcohol along the battery seam to help weaken the adhesive.
- Swing the battery completely out of its recess and pull it off of the plastic liner.

Step 20



- Remove the battery.

⚠ Do not reuse the battery after it has been removed. Reusing a battery that is bent or otherwise stressed is a potential safety hazard.

- ☑ If your replacement battery did not come with a green pull tab, you can transfer the old tab to the new battery to help with subsequent replacements.
- ☑ While installing a new battery, *temporarily* connect the battery to the phone to ensure proper battery alignment.
- ☑ If you are installing a battery onto a new screen and digitizer assembly, be sure to peel off the [dark blue adhesive liners](#) to expose the battery adhesive for the new battery.

To reassemble your device, follow these instructions in reverse order.

For optimal performance, calibrate your newly installed battery: Charge it to 100% and keep charging it for at least 2 more hours. Then use your device until it shuts off due to low battery. Finally, charge it uninterrupted to 100%.

Take your e-waste to an [R2 or e-Stewards certified recycler](#).

Repair didn't go as planned? Check out our [OnePlus 5 Answers community](#) for troubleshooting help.