



# HP OfficeJet 4650 Paper Tray Replacement

This guide outlines the necessary steps to replace the HP OfficeJet 4650's paper tray.

Written By: Stephanie Carpintero



---

## INTRODUCTION

The paper tray is what feeds paper to the printer. If the paper tray is malfunctioning, the HP OfficeJet 4650's printing function will not work. This guide will show you how to replace the paper tray.

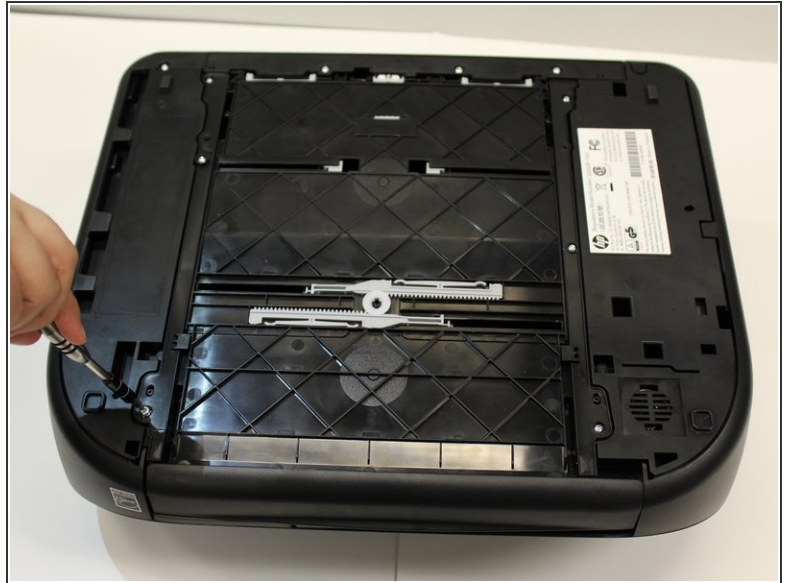
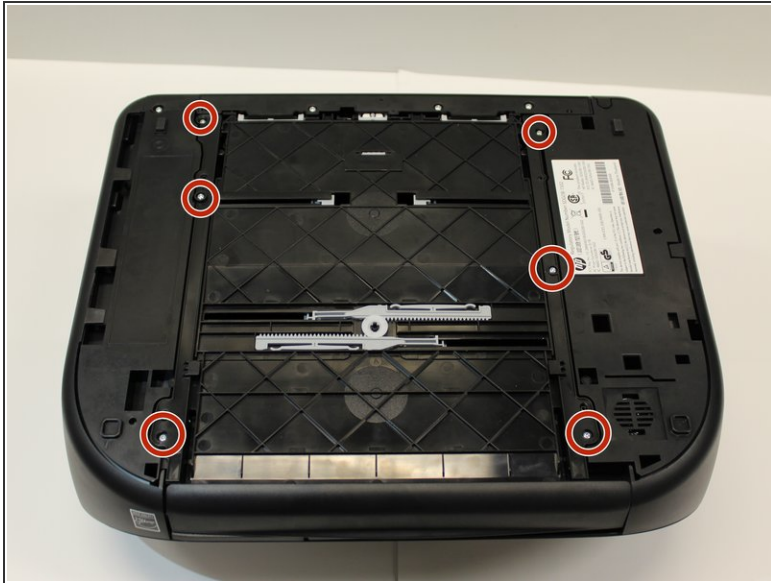
---



### TOOLS:

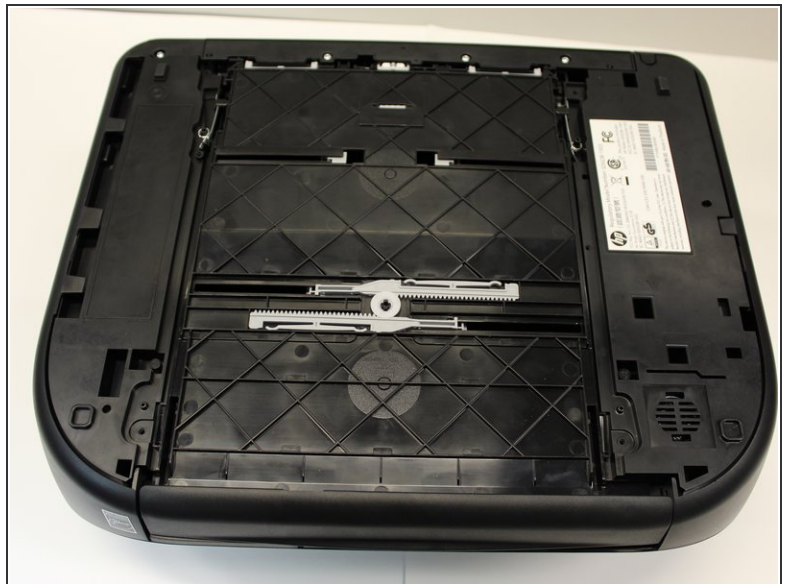
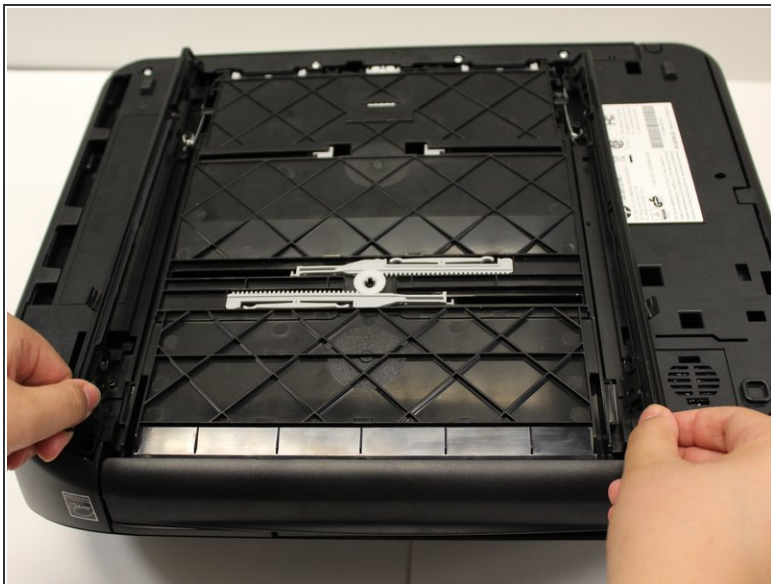
- [T6 Torx Screwdriver](#) (1)
-

## Step 1 — Paper Tray



- Use two hands to carefully flip the printer upside down.
- Remove the ten 14mm screws by using a 2.0 mm hex screwdriver and turning the screws counterclockwise.

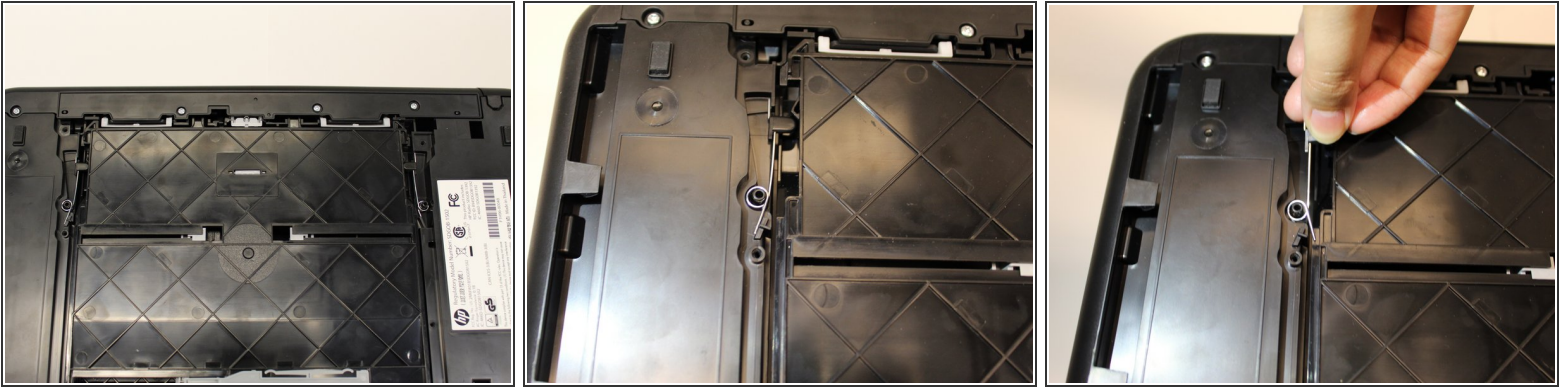
## Step 2



- Lift the left and right side flaps away from the paper tray to remove them.



### Step 3



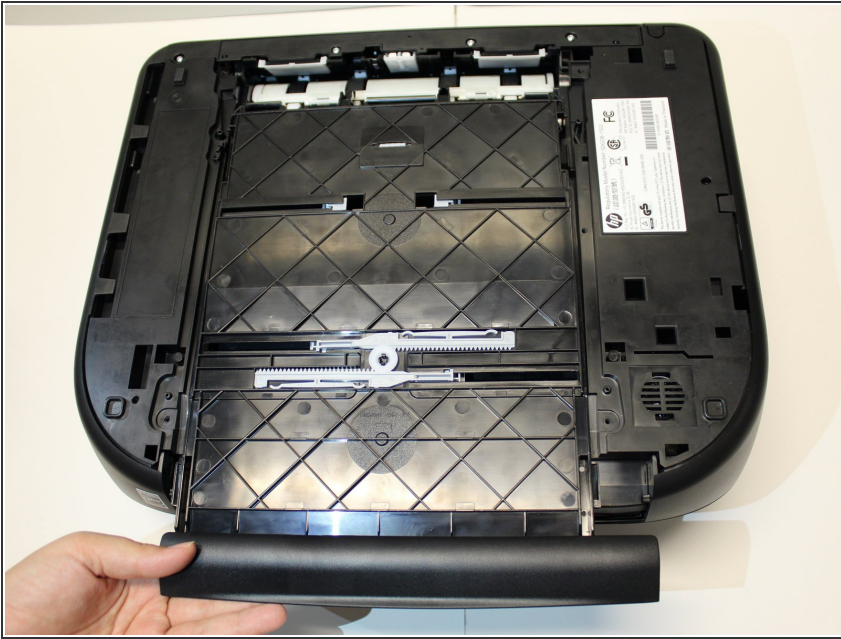
- Remove the left spring by grabbing the rubber tips connected to the spring and lifting up.

### Step 4



- Remove the right spring by grabbing the rubber tips connected to the spring and lifting up.

## Step 5



- Remove the paper tray by pulling the tray away from the printer.

To reassemble your device, follow these instructions in reverse order.