



HP G60 Wi-Fi Card Replacement

Written By: jimenezser

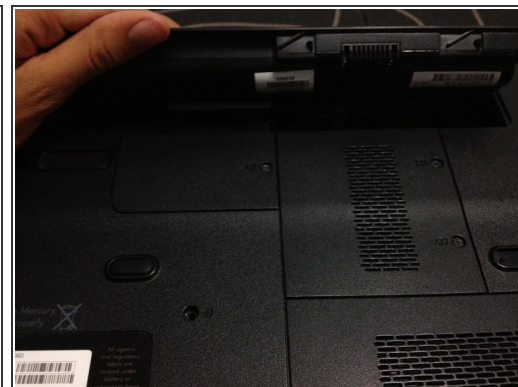
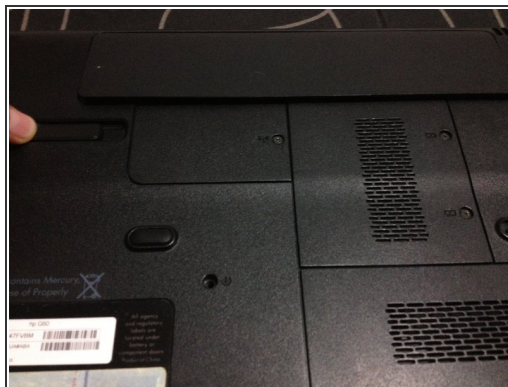




TOOLS:

- [Phillips #0 Screwdriver](#) (1)
-

Step 1 — Battery



- First, remove the battery to avoid electric shock
- Slide and unlock the battery, then lift it

Step 2 — Wi-Fi card



- Now, you should to remove the Wi-Fi card cover
- Remove this screw
- Lift the cover


Step 3 — Unlock Wi-Fi card



- The Wi-Fi card is locked, but you should to change that.
- Remove this two little screws.
- Pull the Wi-Fi card.

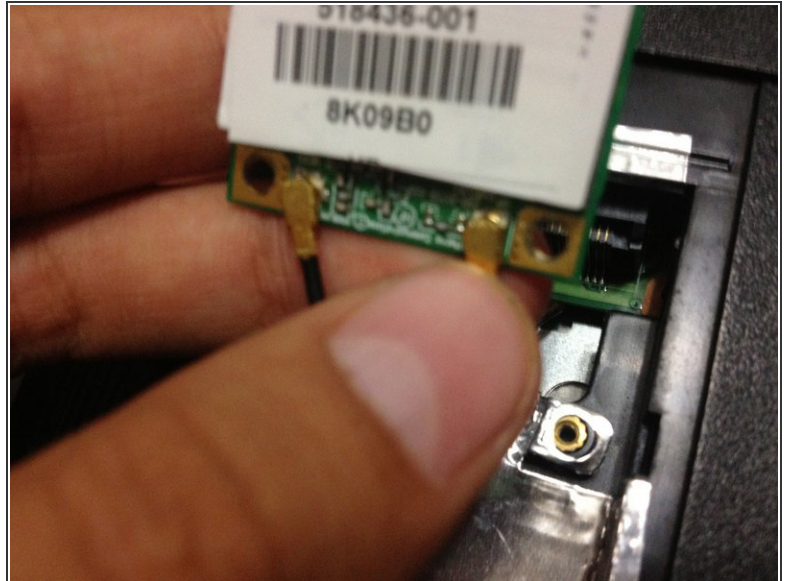
Step 4 — Unplug Wi-Fi card



 You should to be carefull with the next steps, the plugs are easy to separate, but they are fragile

- Pull carefully both cables from the Wi-Fi card, it requires a little strength

Step 5 — Reassemble Wi-Fi card



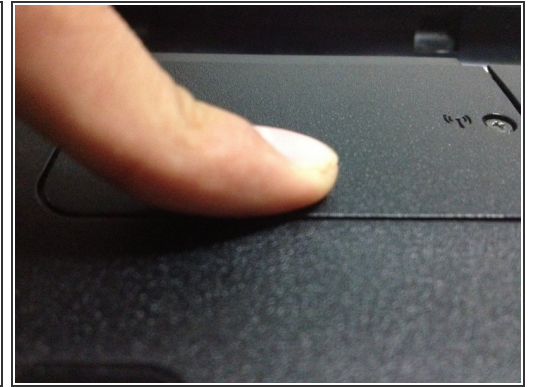
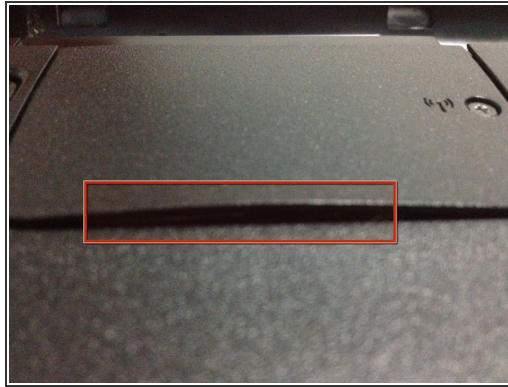
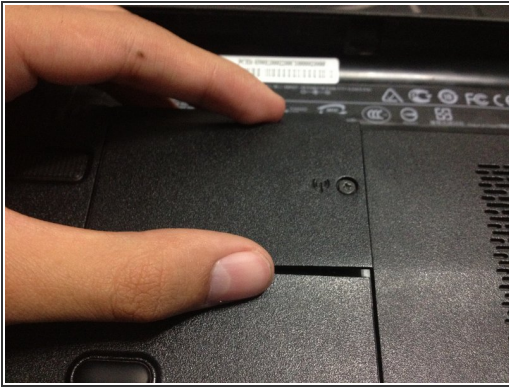
- Now it's time to put the new Wi-Fi card
- Connect both plugs, the cable with white tag, at the left of the Wi-Fi card, the green one, at the right plug

Step 6 — Data Plug



- The Wi-Fi card already has the power plugs, now it's time to the data plug
- Insert the Wi-Fi card in a 45 degrees angle
- Now press it and screw it

Step 7 — Reassemble cover



- For finish, reassemble the cover
- If the cover is still lifted, press softly until you hear a click