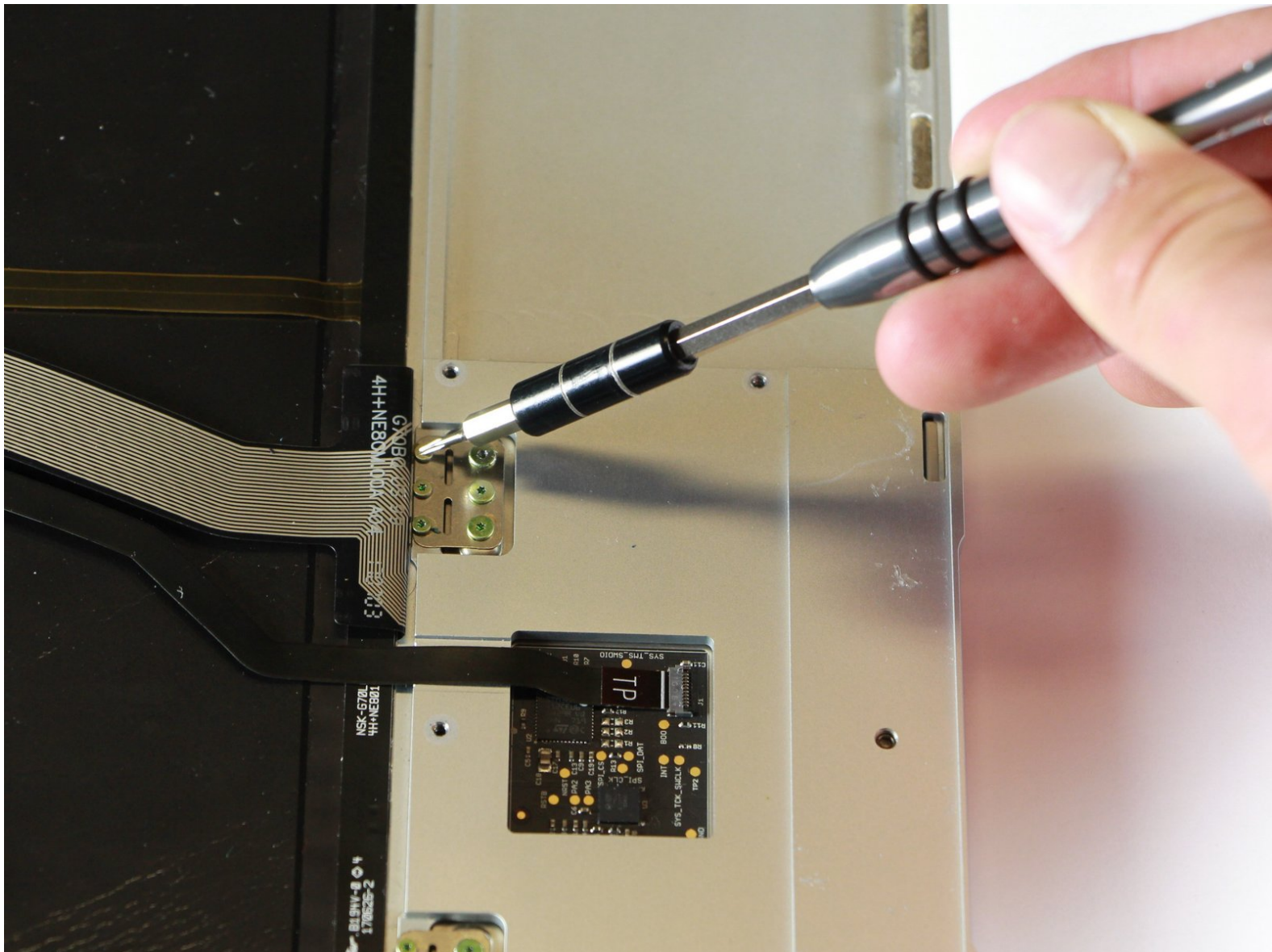




Written By: Derrick Unger



Page 1 of 8

INTRODUCTION

Before starting this replacement, make sure you've read the troubleshooting guide to verify that the touchpad needs to be replaced. There are fragile ribbon connectors being removed in this guide, so proceed with caution!

TOOLS:

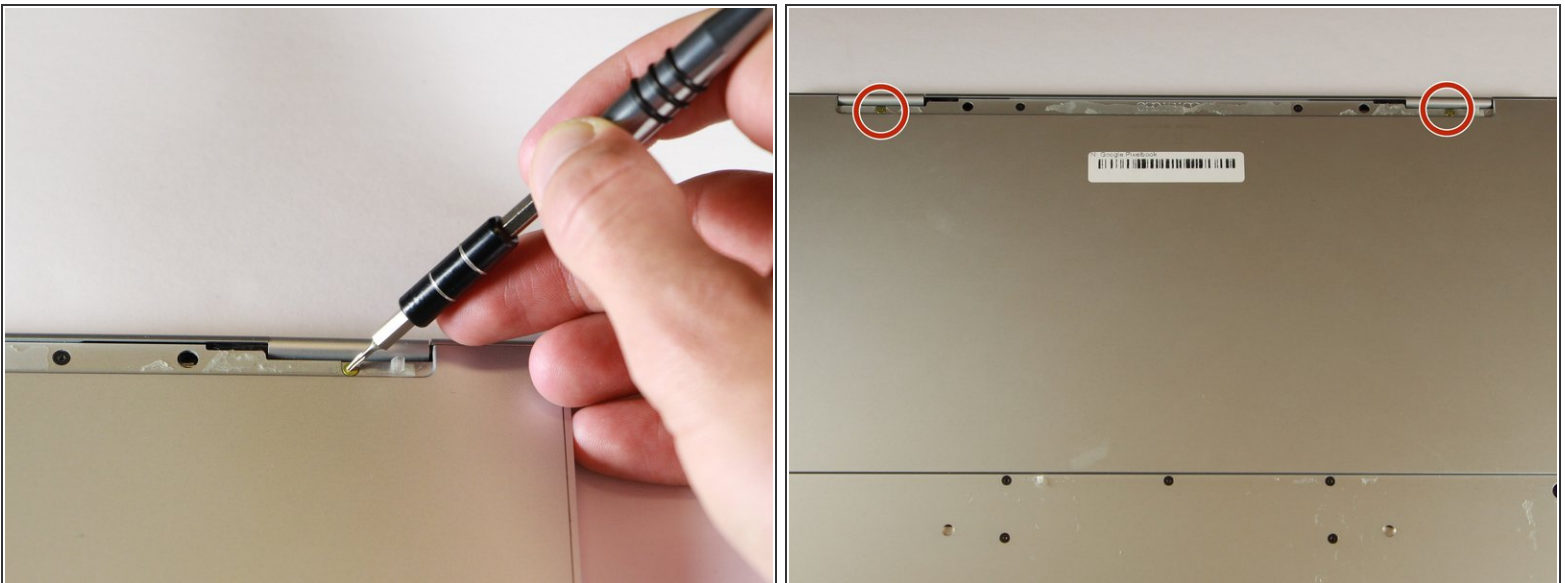
- [Metal Spudger \(optional\)](#) (1)
 - [Spudger](#) (1)
 - [iFixit Opening Tools](#) (1)
 - [T3 Torx Screwdriver](#) (1)
 - [T5 Torx Screwdriver](#) (1)
-

Step 1 — Battery (Back Panel)



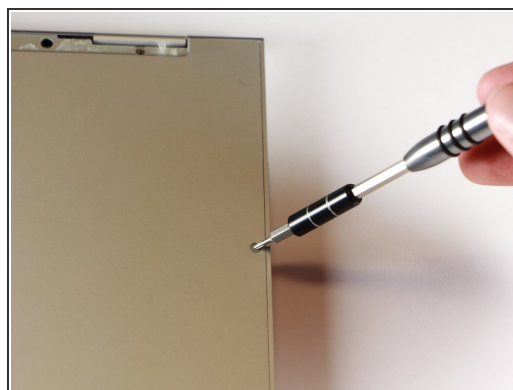
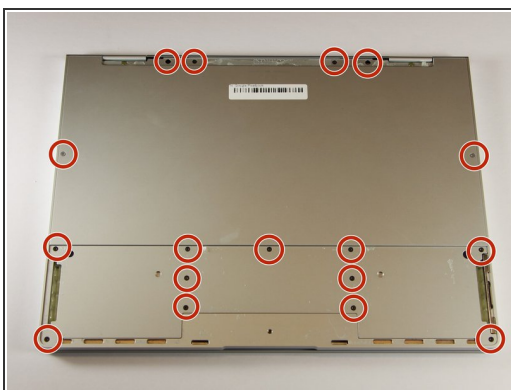
- Use the iFixit opening tools or a metal spudger to pry the rubber covers off the back of your Pixelbook.
- Peel the linings off completely until the back of the Pixelbook looks bare.

Step 2



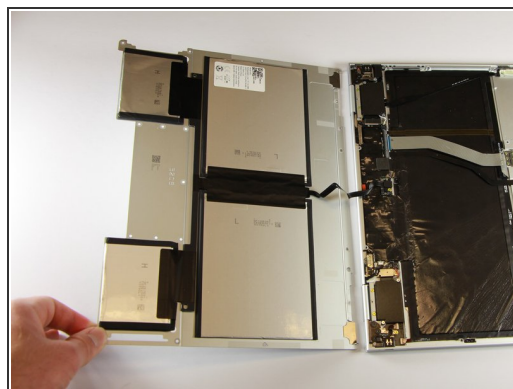
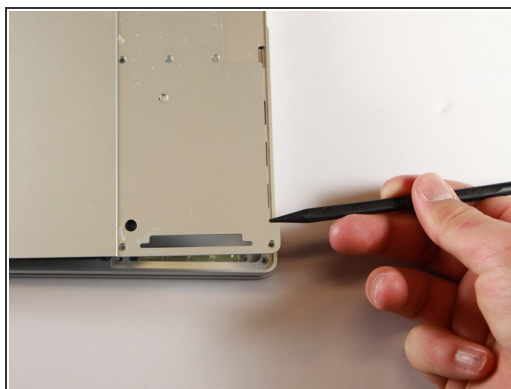
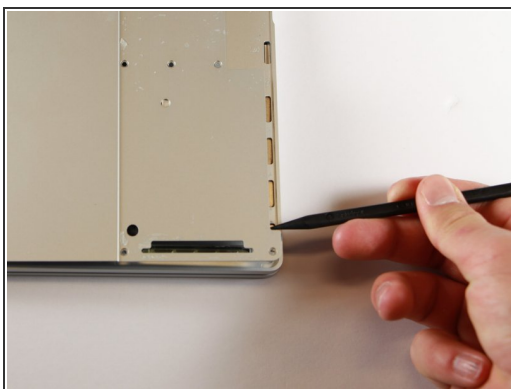
- Remove the two yellow 2.0mm screws by using a T3 Torx screwdriver.

Step 3



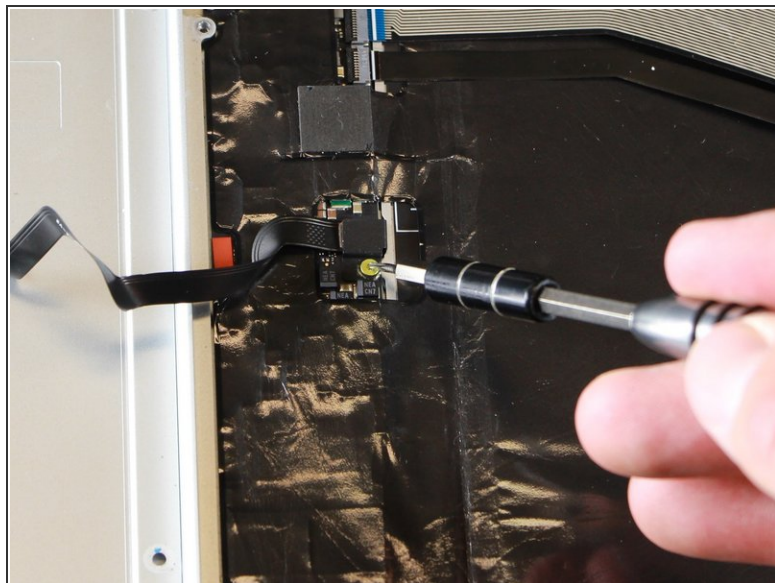
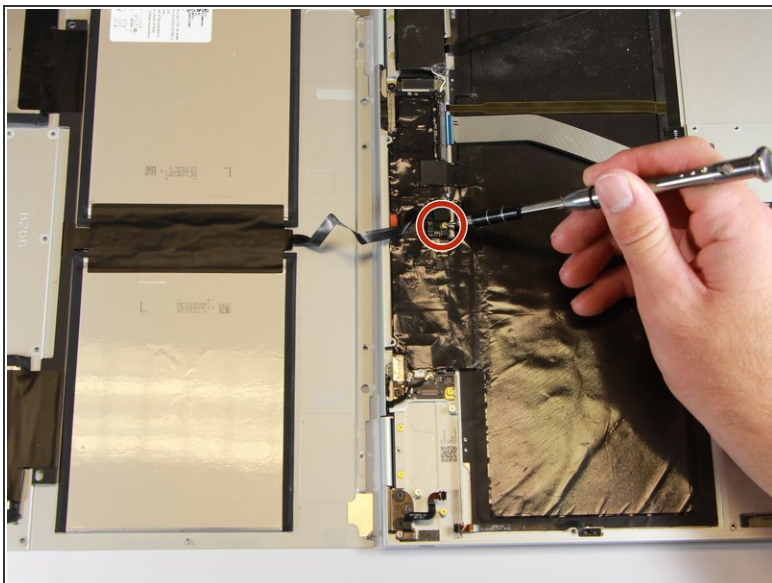
- Remove the seventeen 3.0mm T5 Torx screws from the bottom panel.

Step 4



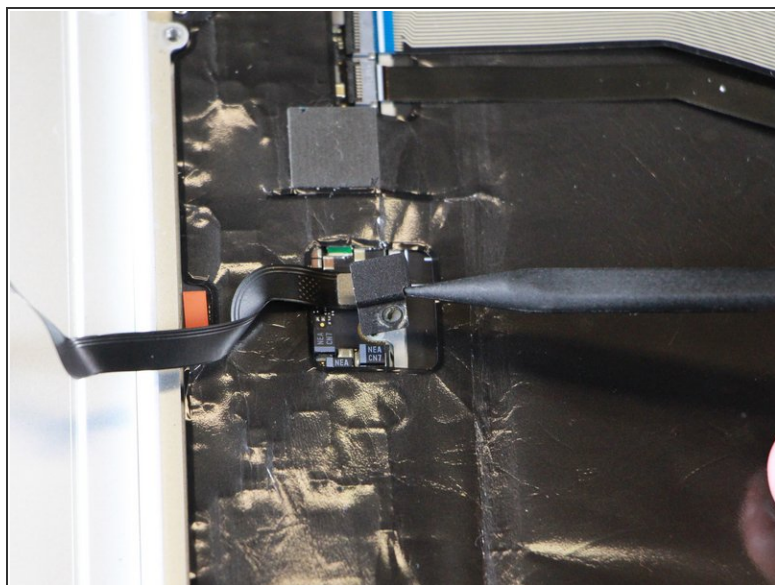
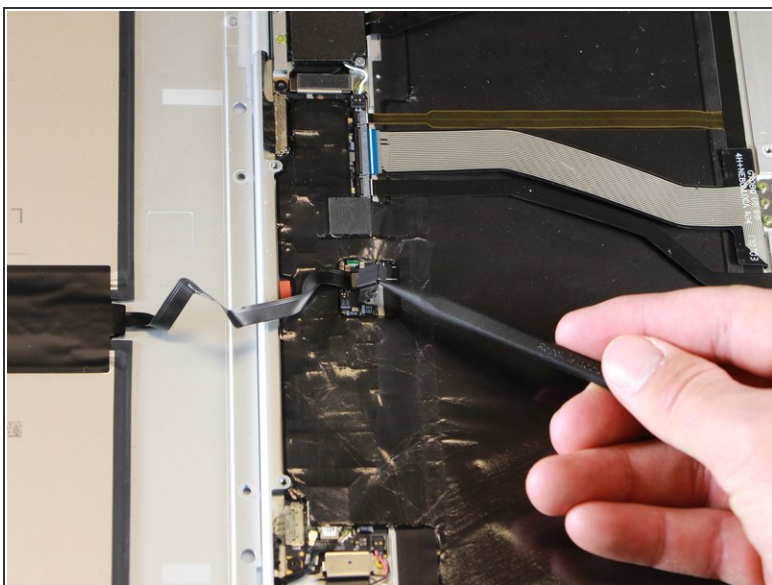
- Use the nylon spudger to pry the edge of the Pixelbook up until you can grab the edge with your fingers.
- Open the back panel completely and lay it flat so you see the whole inside of the computer.

Step 5



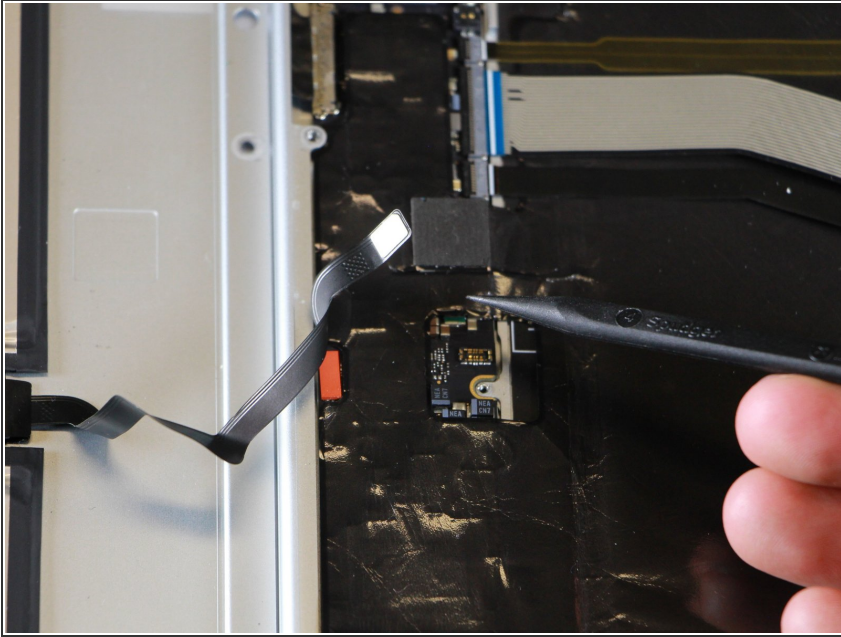
- Remove the yellow 2.0mm screw from the middle of the panel by using the T3 Torx screwdriver to turn the screw counterclockwise.

Step 6



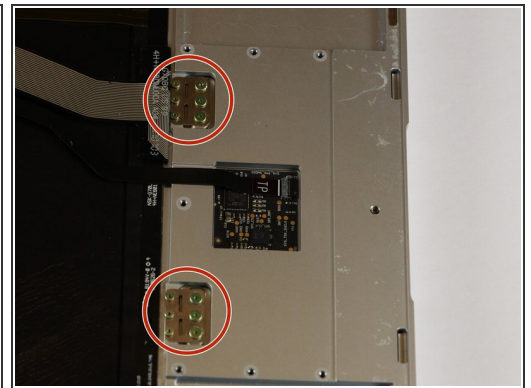
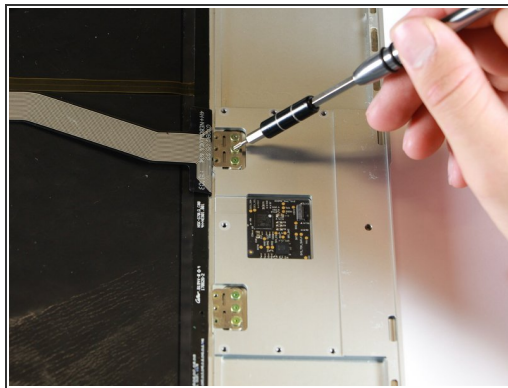
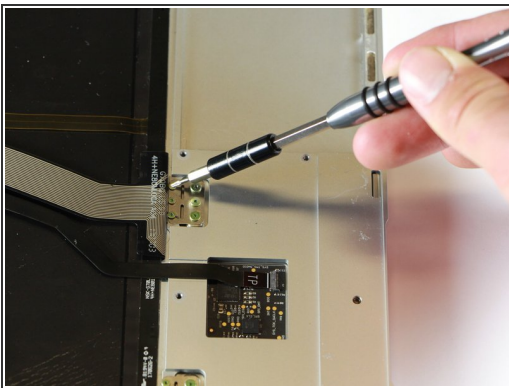
- Remove the small, black casing by using the spudger to lift it up from its place.

Step 7



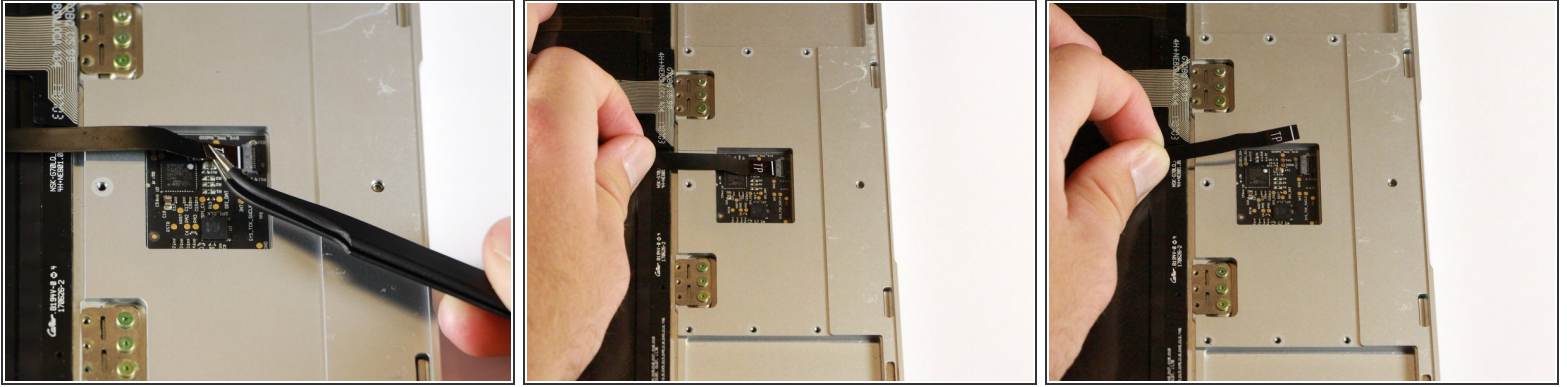
- Disconnect the flat, black cord from the main component by using a spudger to push it out of the slot, or by using your hand to carefully pull it out.
- Your back panel is now free from the main component.

Step 8 — Touchpad



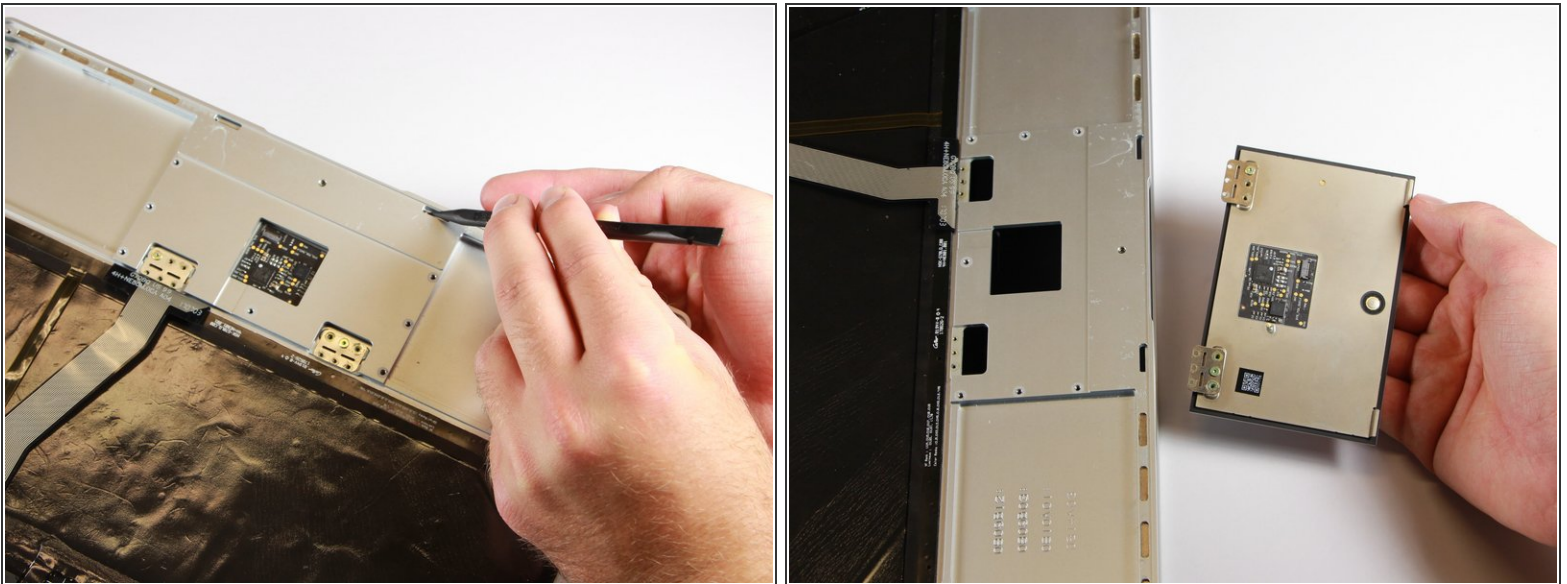
- Once the back panel is out of the way, use the T3 Torx screwdriver to turn both the 2.0mm and large 3.0mm gold screws from the touchpad.

Step 9



- Gently pull out the ribbon connector either by using tweezers or your fingers to pull the cord out and up.

Step 10



- Use the nylon spudger to push the touchpad out of the laptop by inserting the point into the hole near the edge of the laptop.
- As the metal plates with the screws tilt upwards, use your hand to catch the falling touchpad and remove it.

To reassemble your device, follow these instructions in reverse order.

This document was generated on 2020-11-15 11:04:33 PM (MST).

