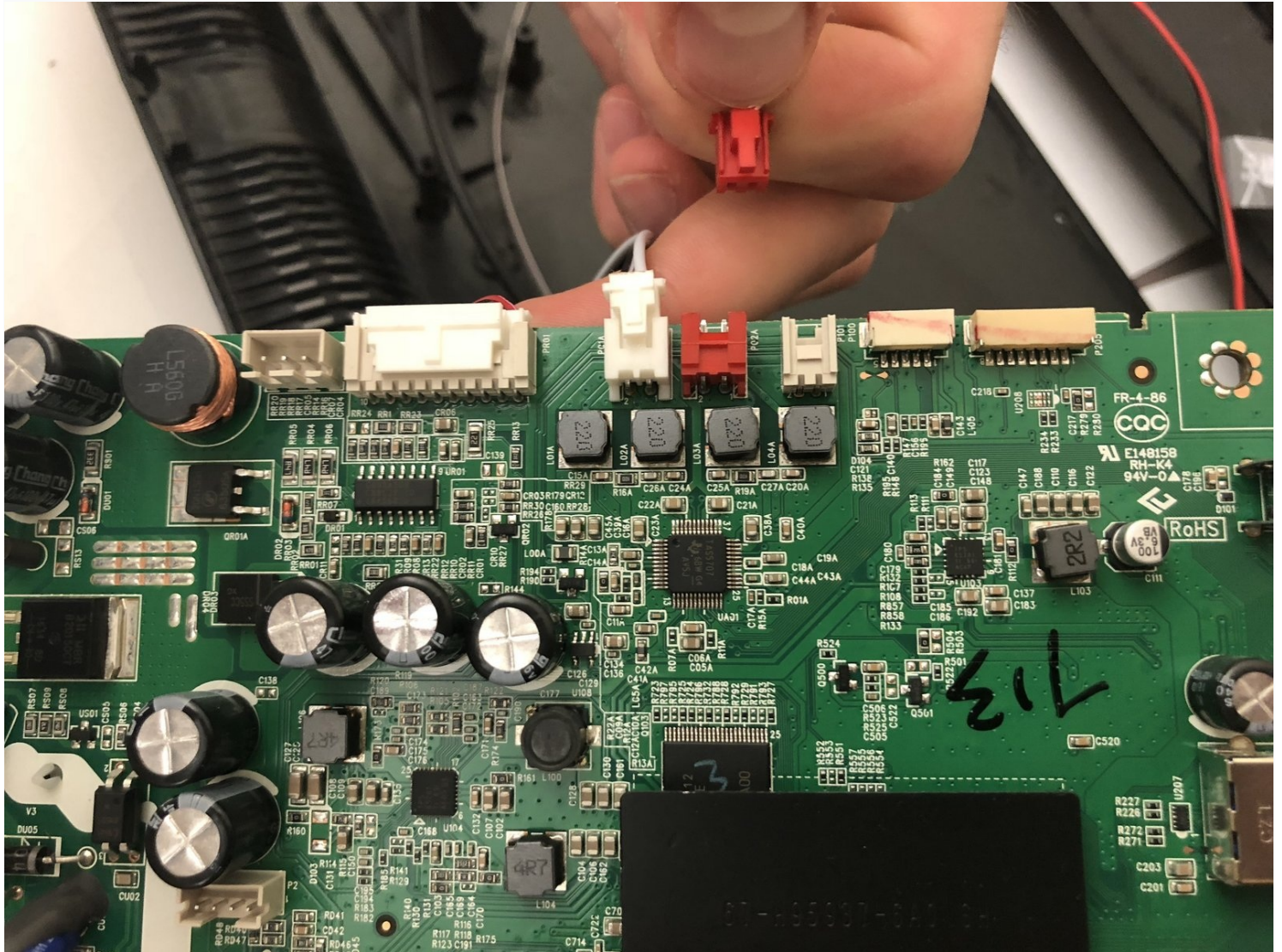




Insignia NS-24ER310NA17 Speaker Replacement

This guide will take you through the process of...

Written By: Hannah Berenjfoorosh



INTRODUCTION

This guide will take you through the process of replacing speakers in an Insignia TV.

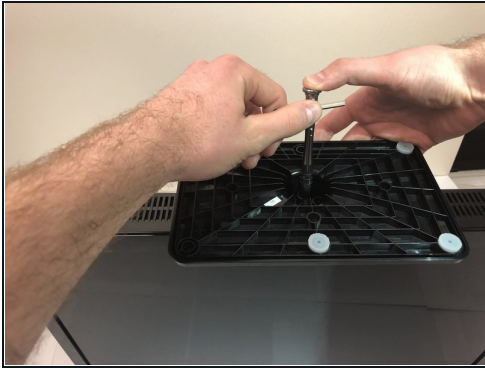
TOOLS:

Phillips #00 Screwdriver (1)

PARTS:

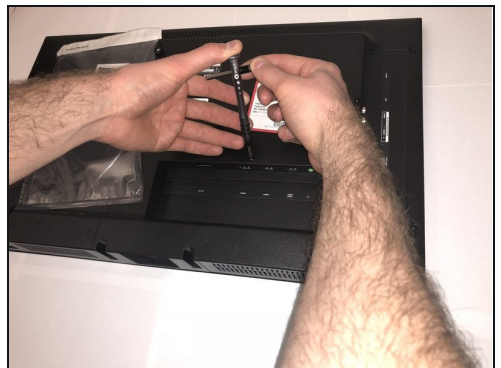
42-WDF08D-JH1AG Speaker (1)

Step 1 — Remove the base



- Rest the TV on its top edge so you have access to the base.
- Use a Phillips #2 screwdriver to take out the four screws on the bottom of the base.
- Remove the base from the frame.

Step 2



- Lay the TV face down.
- Use the Phillips #00 screwdriver to remove all of the Phillips Head Screws from the the back of the TV.

Step 3 — Pry the TV open

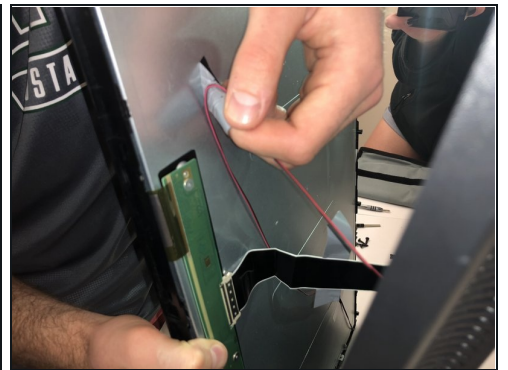
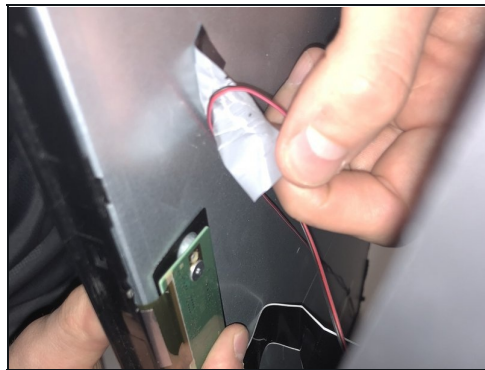
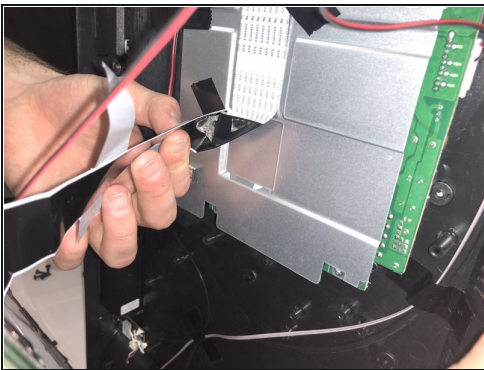


- Stand the TV on its top edge.
- Gently pry apart the front and back of the TV.

① The two halves should pull apart easily since there are no longer any screws holding it together.

⚠ The two halves will still be connected by wires and cables that are taped to each side. Do not pull on these. We will remove them in the next step.

Step 4 — Disconnect wires



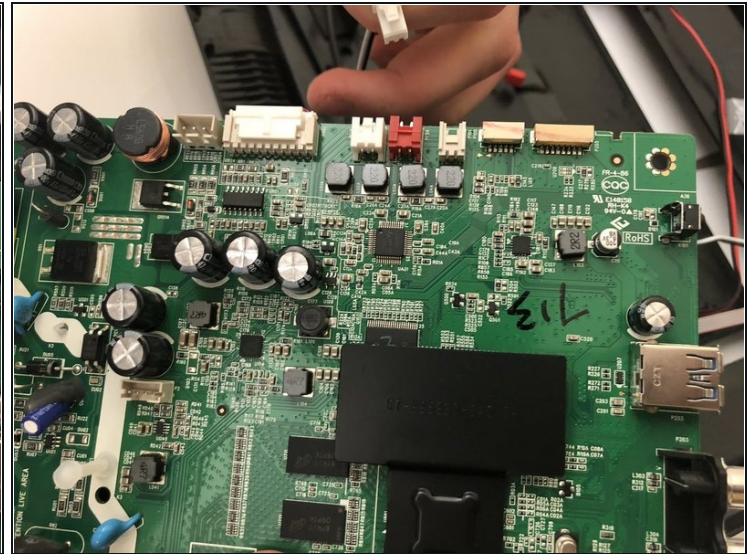
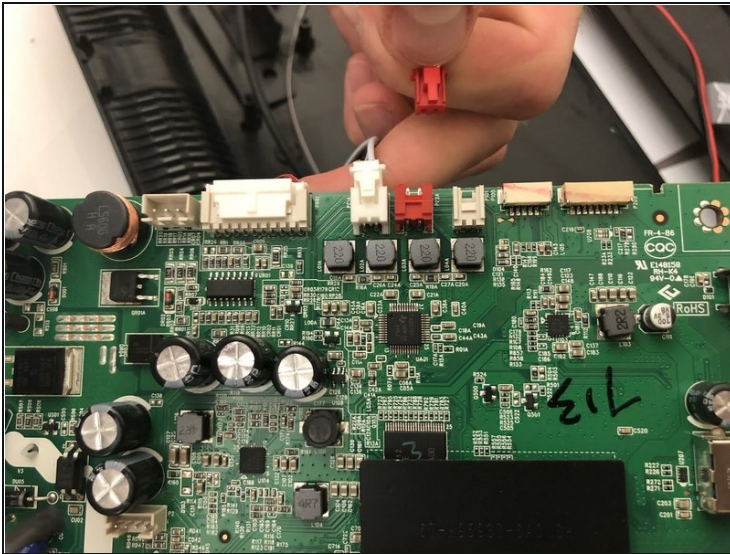
- ① As mentioned in the previous step, there are wires still connecting the two halves.
- Remove all the pieces of tape to detach the wires from both sides.
 - You want to gently peel the tape off, without pulling on the wires.

Step 5



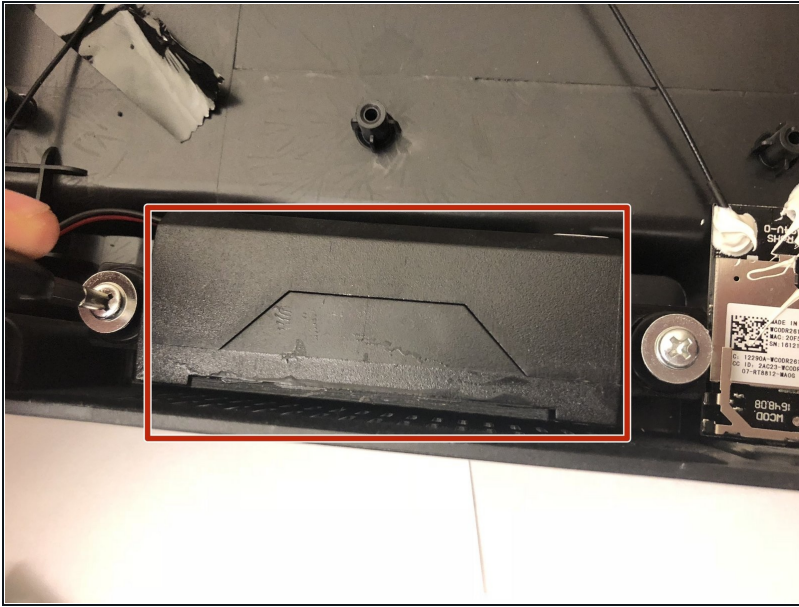
- Spread apart your TV the rest of the way, but do not disconnect any of the wires.
- ① You should have a clear view of the inside on both sides.

Step 6 — Speaker



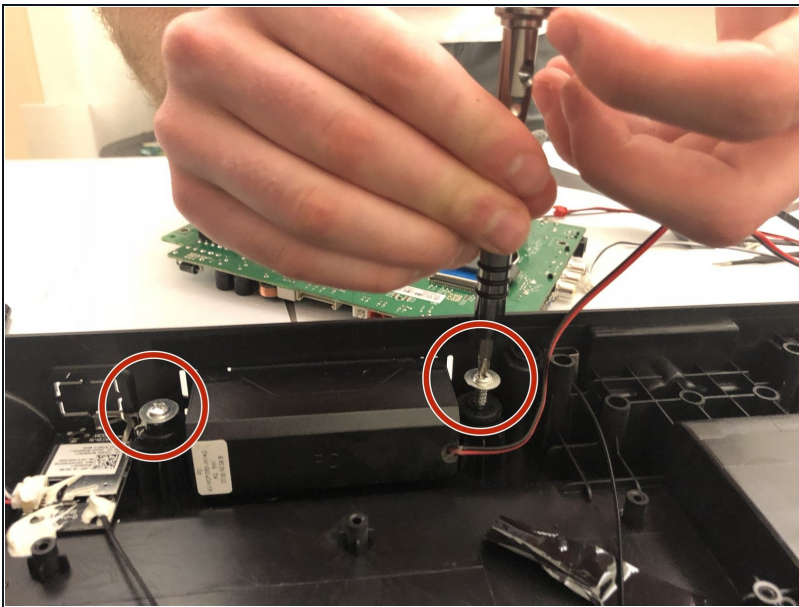
- Unplug the red (right speaker) cord from the motherboard.
- Unplug the white (left speaker) cord from the motherboard.

Step 7



- Start by locating speaker in bottom of back panel.

Step 8



- Remove screws on both sides holding the speaker in place.

Step 9



- Pull the speaker out of its casing, and repeat for the process for the other speaker.

To reassemble your device, follow these instructions in reverse order.