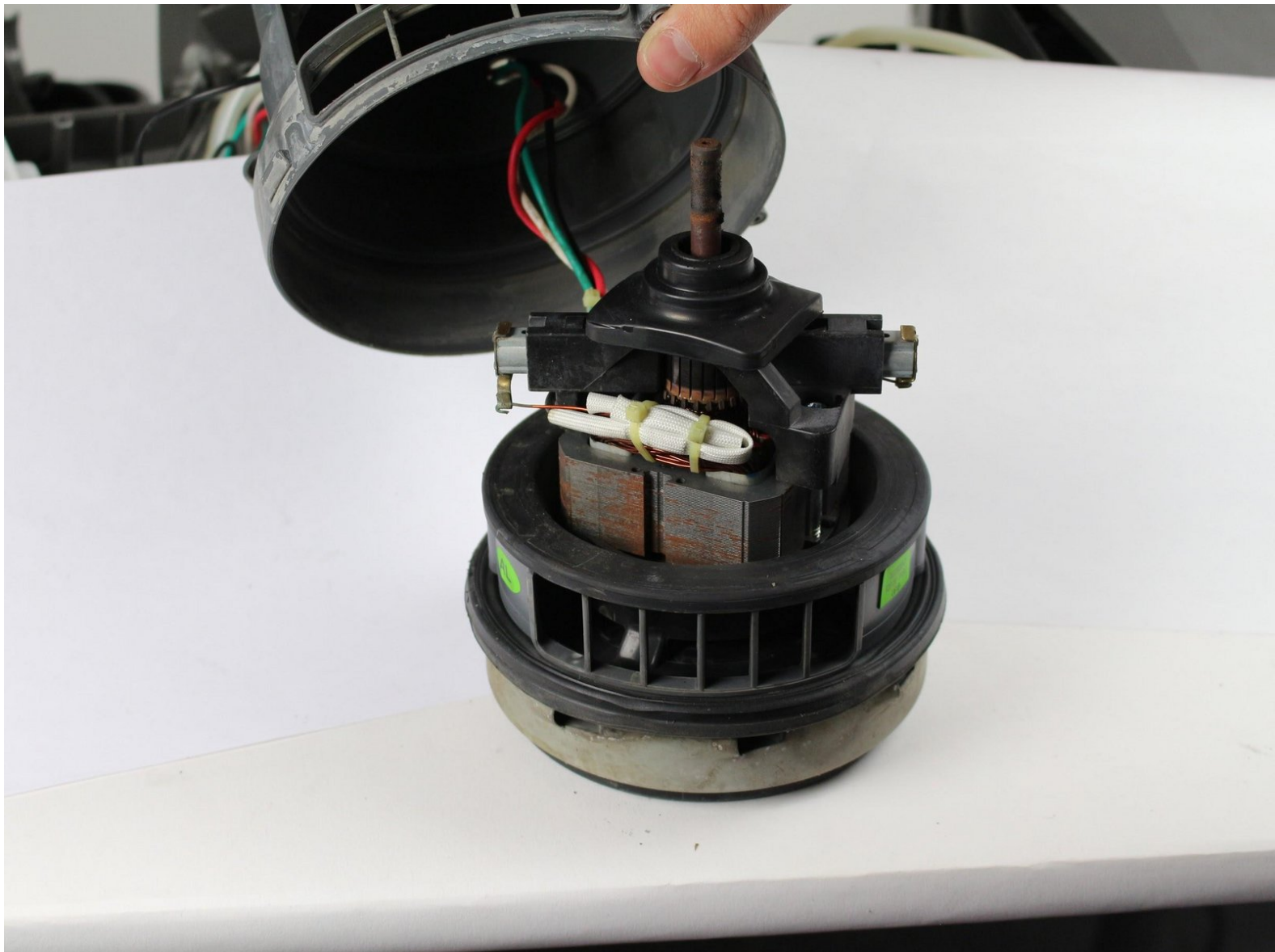




Hoover Power Path Pro Advanced Suction Motor Replacement

This guide will show how to replace the suction motor on your Hoover Power Path Pro Advanced.

Written By: Jose Andres Gonzalez Valdes



INTRODUCTION

The suction motor is at the core of the proper function of any household floor cleaner. This guide will demonstrate how to properly replace a broken suction motor.




TOOLS:

- [Phillips #2 Screwdriver](#) (1)
-

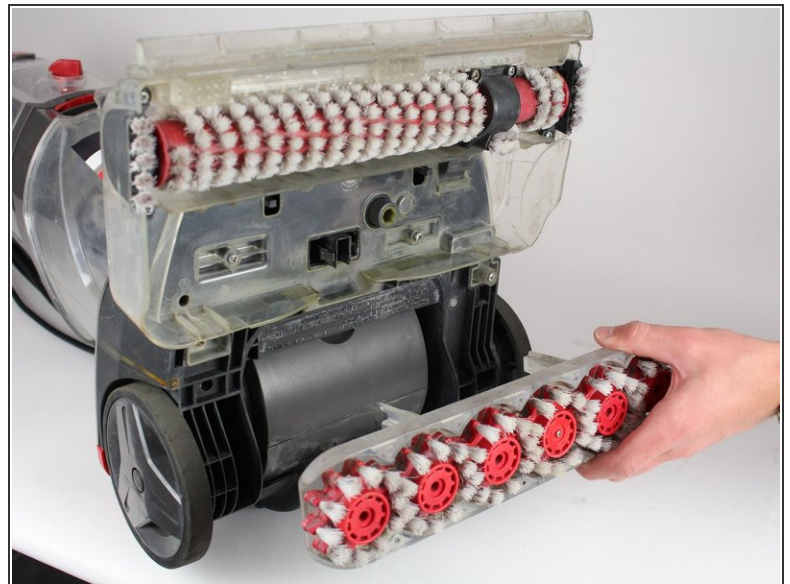
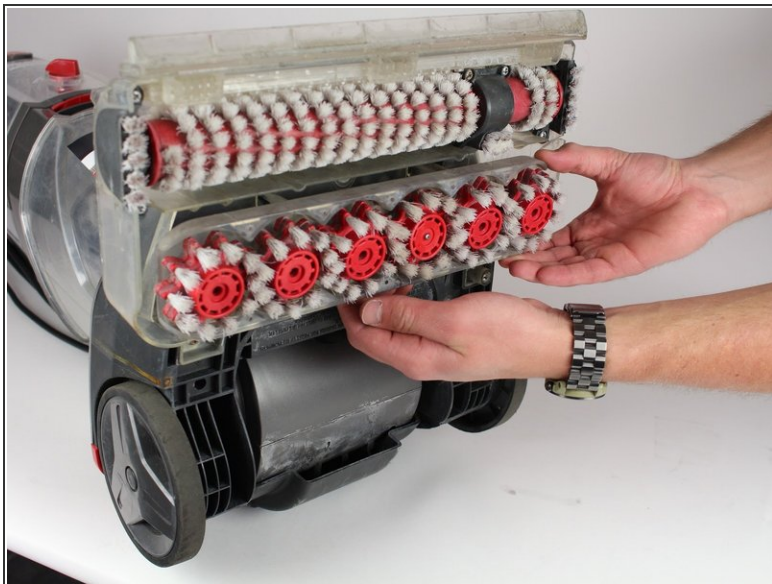
Step 1 — Brush Roller



 Unplug the vacuum cleaner from the wall outlet before starting. Make sure the water tanks are empty.

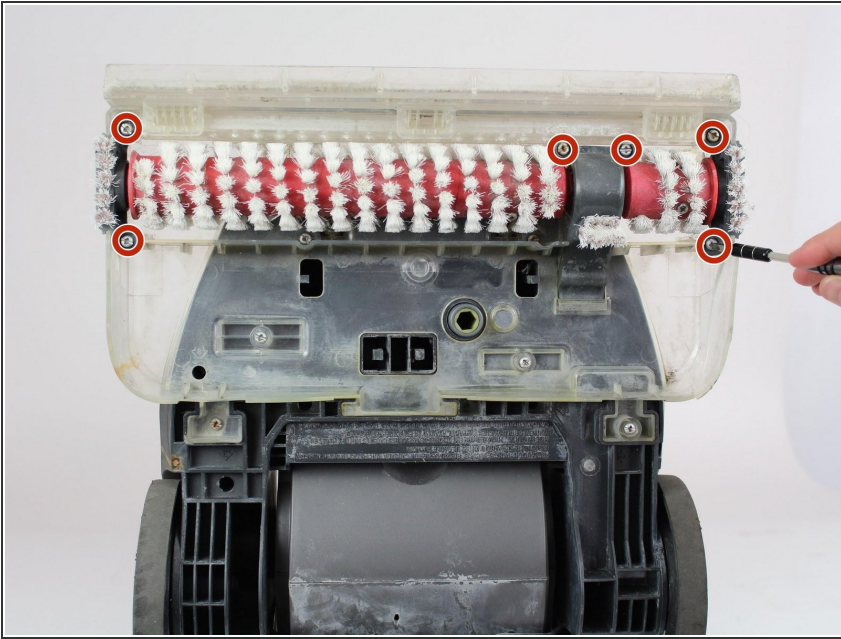
- Lay the cleaner down horizontally with its wheels closest to the floor.

Step 2



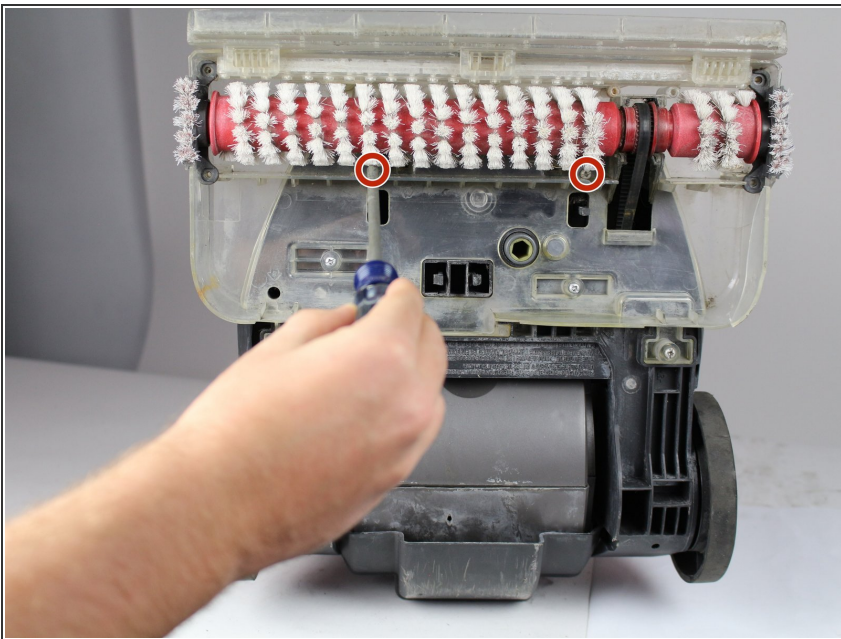
- Hold the lower brush roll with both hands and pull outwards until it is detached.

Step 3



- Unscrew the 6 marked screws using a Phillips #2 head screwdriver.
- Remove the brush roller.

Step 4 — Belt



- Use a long #2 Philips head screwdriver to remove the 8 numbered screws on the bottom of the cleaner.

Step 5



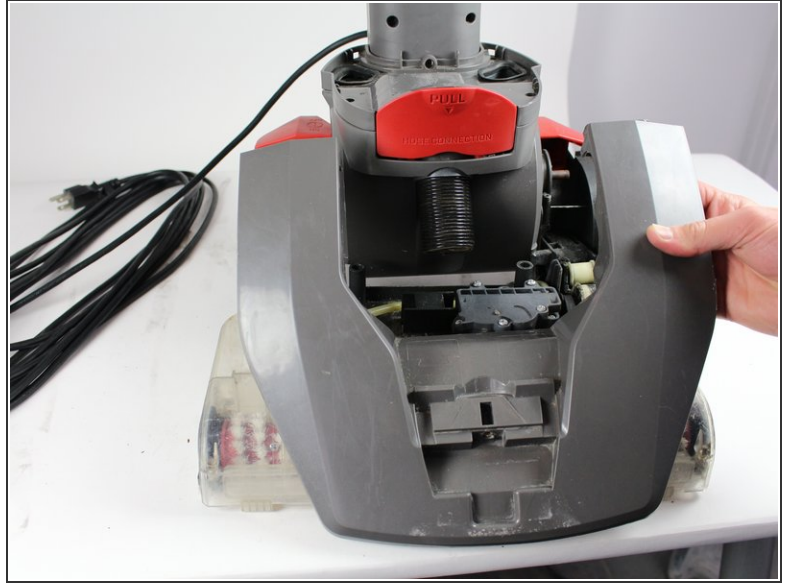
- Pull the red handle shown to remove the front suction unit from the cleaner.

Step 6




- Unscrew the Phillips #2 screw at the bottom of the hose.

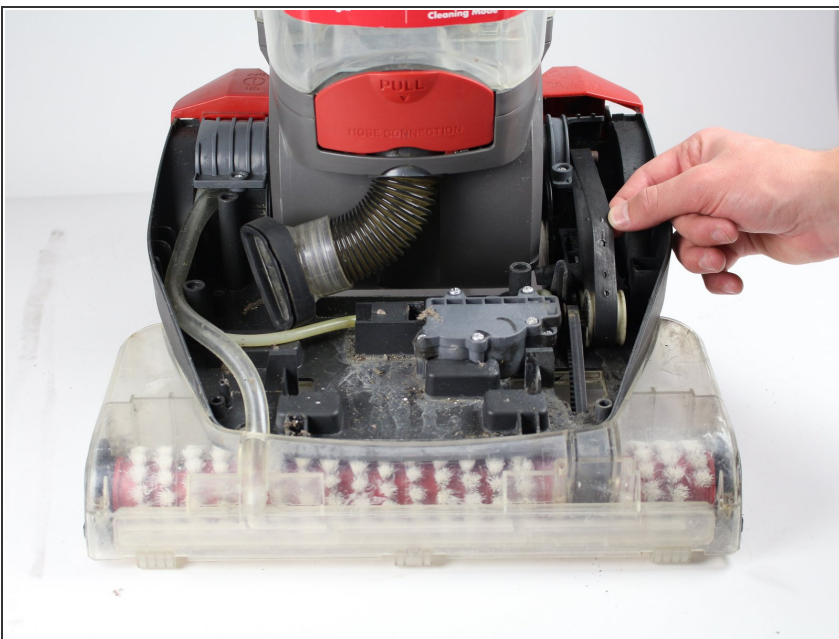
Step 7



- Push down on the handle release button. Pull and disconnect the edge of the top cover on the side of the handle release button.
- Repeat the above step for the "On/Off" button.

 When pulling the handle release button, make sure the top of the cleaner does not fall.

Step 8



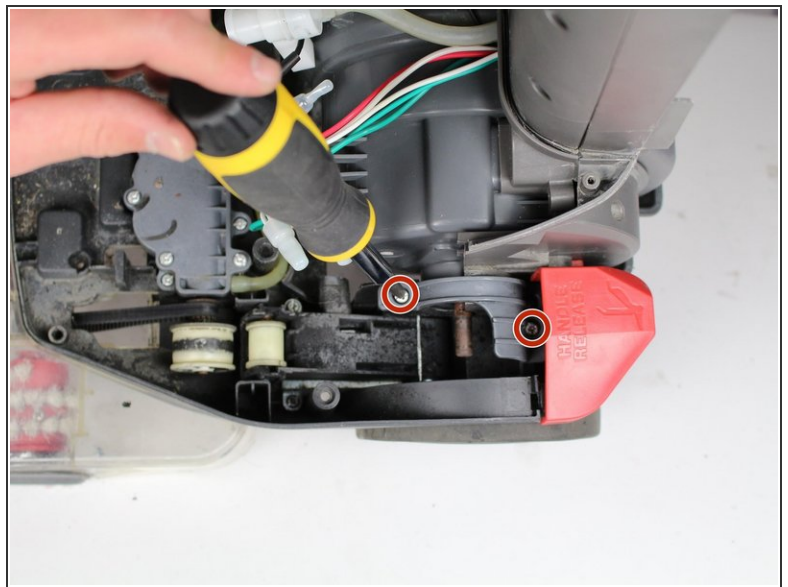
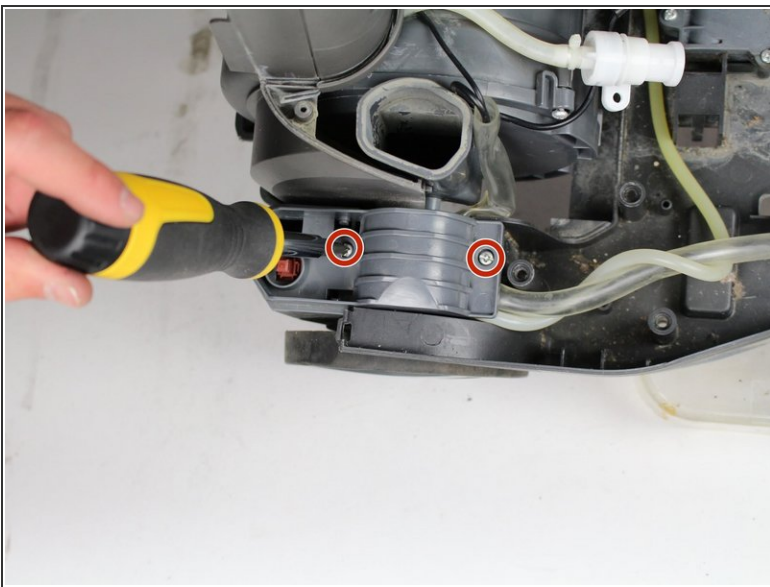
- Gently grab the belt and pry it off from the rollers.

Step 9 — Suction Motor



- Unscrew two screws using Phillips #2 screwdriver.
- Detach grey piece from vacuum.

Step 10



- Unscrew four screws using a Phillips 2 screwdriver.

Step 11



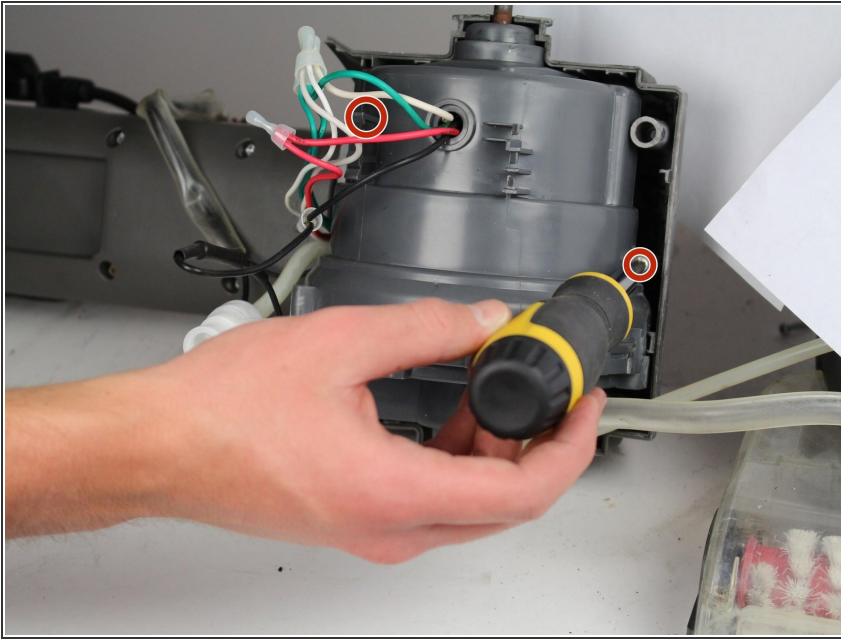
- Pull out of base of vacuum.

Step 12



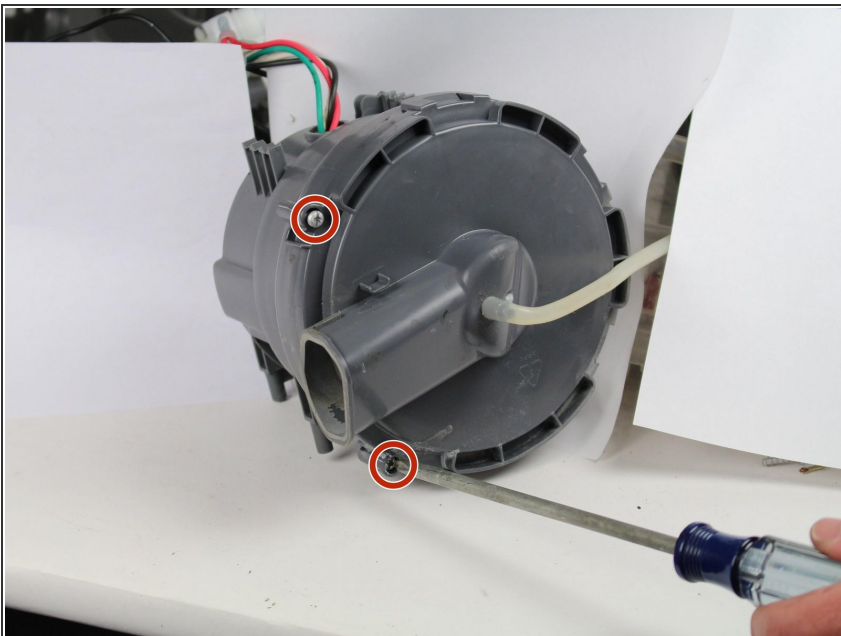
- Flip vacuum over and unscrew three screws with a Phillips #2 screwdriver.

Step 13



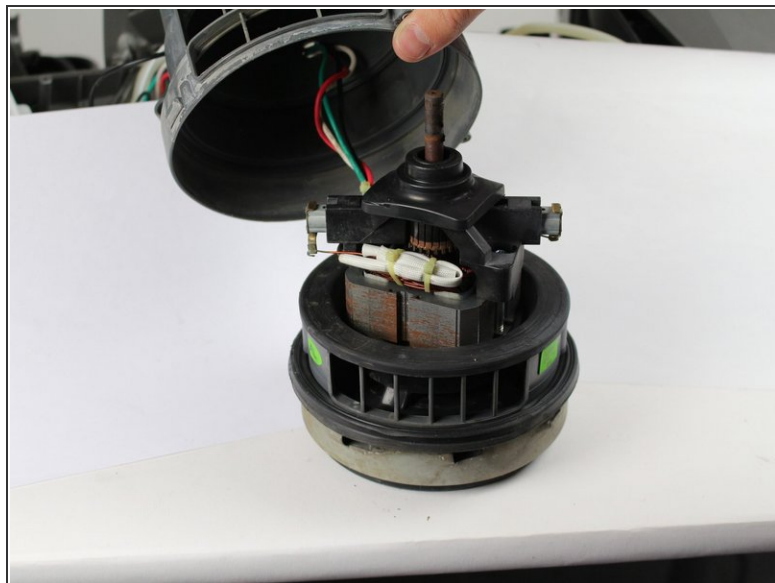
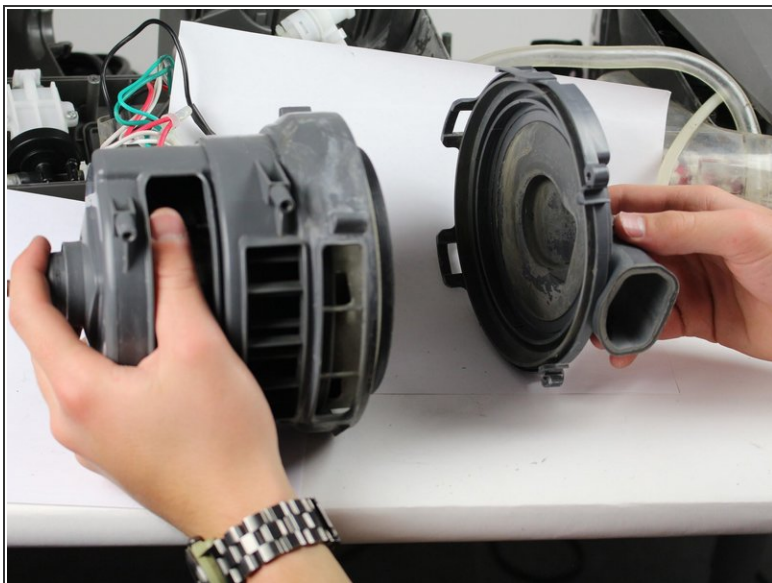
- Unscrew two screws with Phillips #2 screwdriver.

Step 14



- Detach motor and unscrew two screws with a Phillips #2 screwdriver.

Step 15



- Pull the bottom section off.
- Pull the cap off.

To reassemble your device, follow these instructions in reverse order.