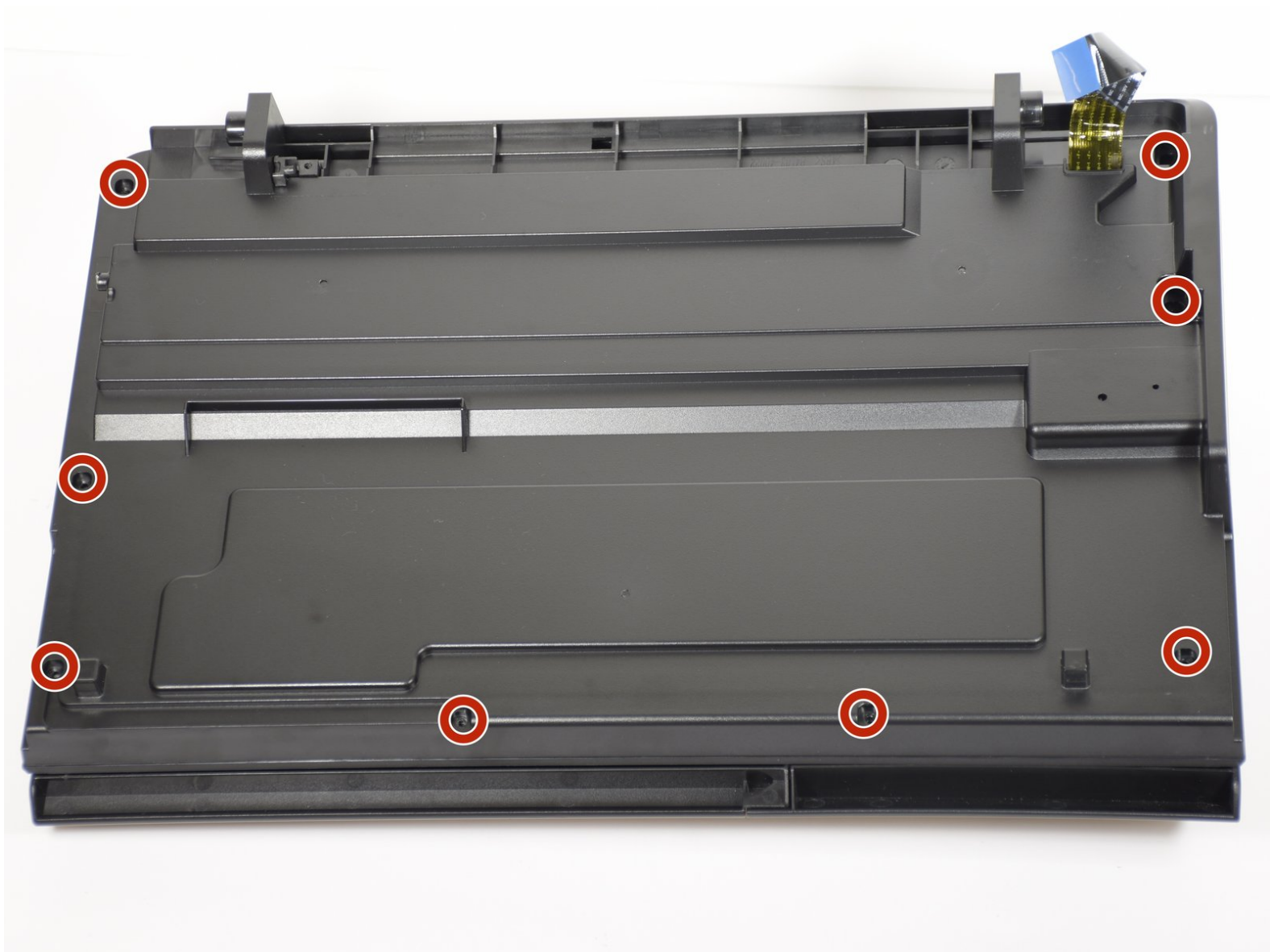




# HP Officejet 4630 Scanner Head Replacement

How to replace the HP Officejet 4630 scanner head.

Written By: Maya Willis



---

# INTRODUCTION

The scanner head is necessary for copying and faxing. Follow the guide to replace this crucial part.

---



## TOOLS:

- [T10 Torx Screwdriver](#) (1)
- [T6 Torx Screwdriver](#) (1)
- [Heat Gun](#) (1)

*Optional*

- [Spudger](#) (1)
-

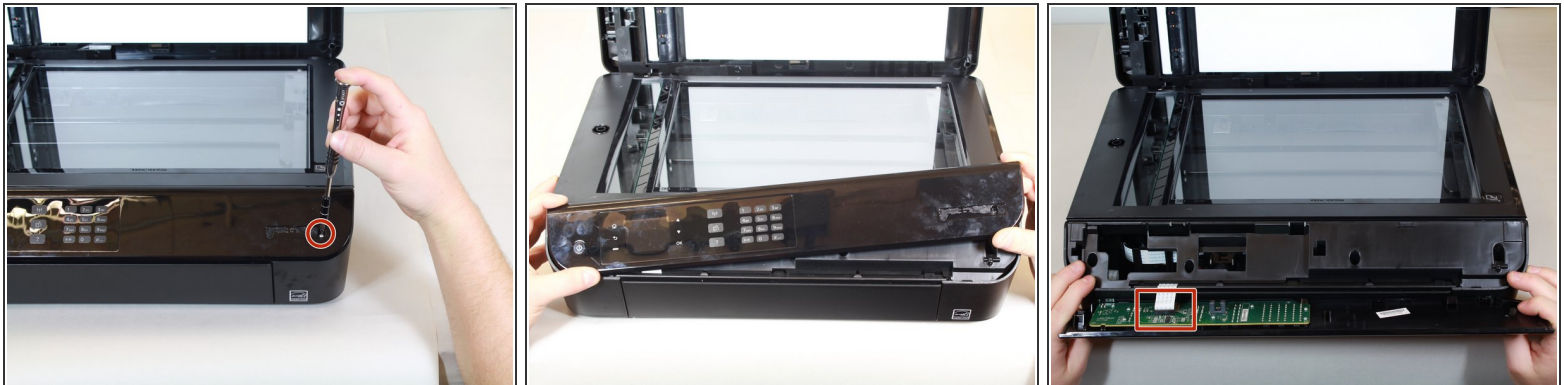
## Step 1 — LCD Display



**i** There is a hidden screw underneath the model sticker on the front panel.

- Peel the model sticker off the cover.
- This will expose the T10 screw securing the panel.

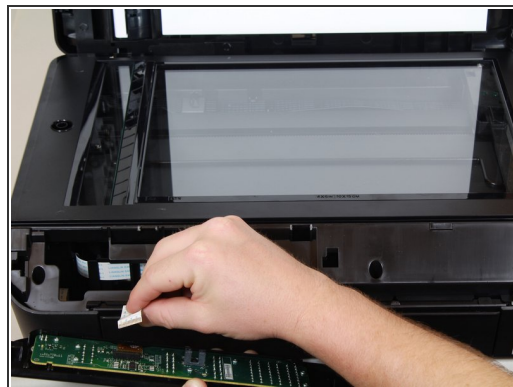
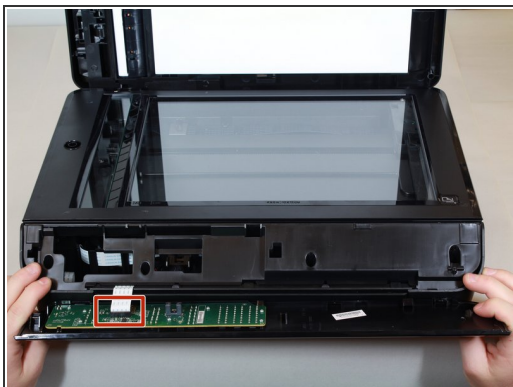
## Step 2



- Remove the single 12mm-T10 screw securing the front panel to the printer body.
- Loosen the panel cover from the printer body.

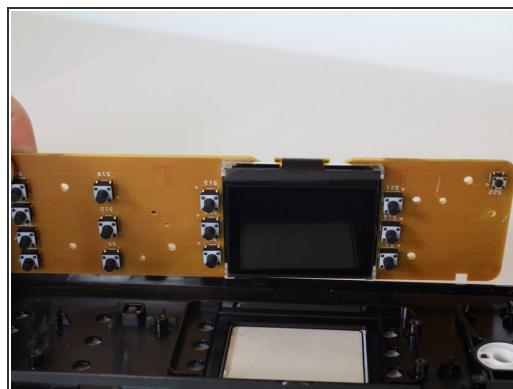
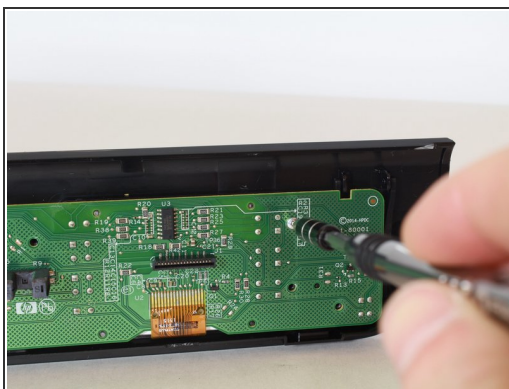
**i** There is a ribbon cable connected to the backside of the cover. Disconnect the cable before separating the panel completely.

## Step 3



- Gently remove the No-Fuss ribbon cable from the front panel.

## Step 4



- Remove the seven 8mm screws using the Torx T6 screwdriver.
  - Remove the motherboard from the front-panel housing.
- i** The LCD display is on the opposite side.

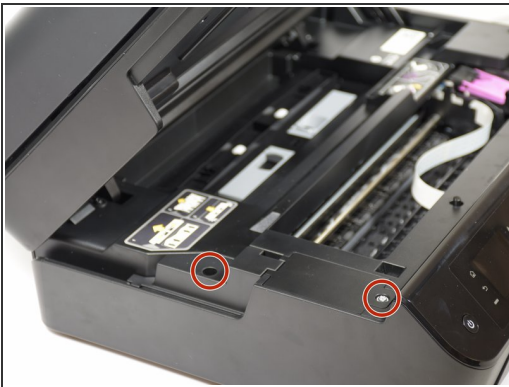


## Step 5 — Power Supply



- Lift the hood of the printer.

## Step 6



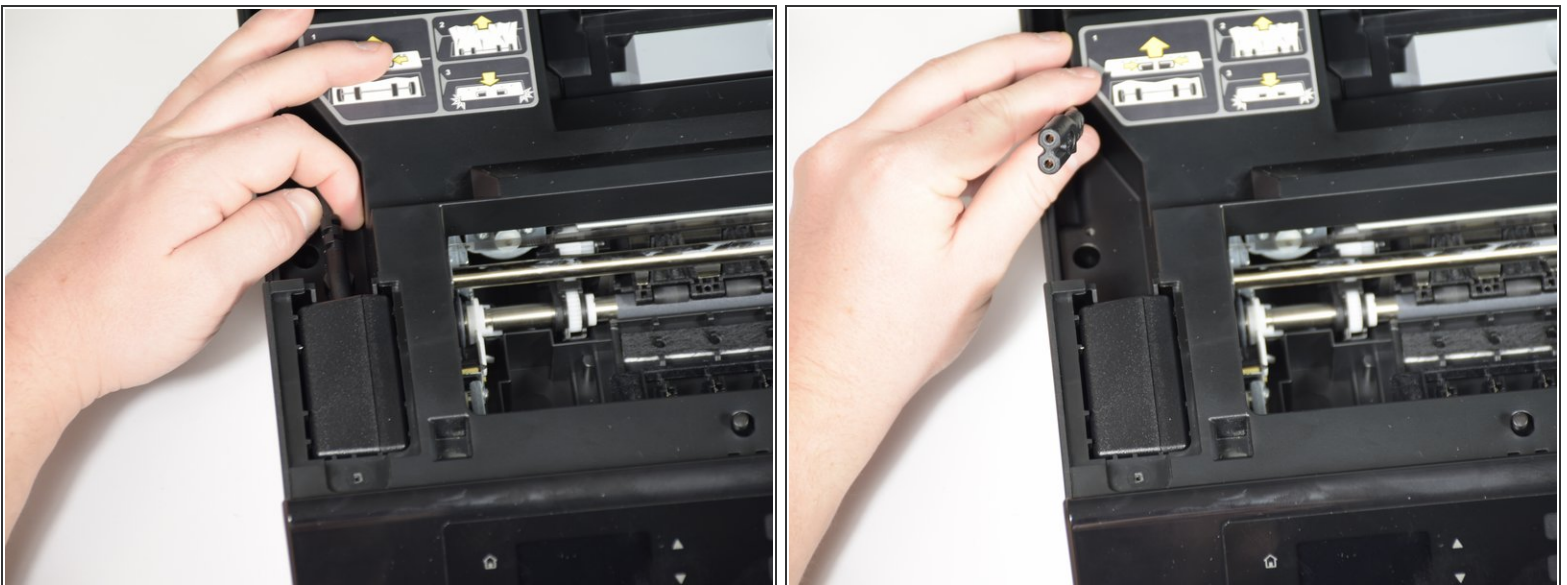
- Remove the two T10 11mm screws.

## Step 7



- Remove the panels covering the power brick and cord.

## Step 8




- Remove the cord from the power supply.



## Step 9



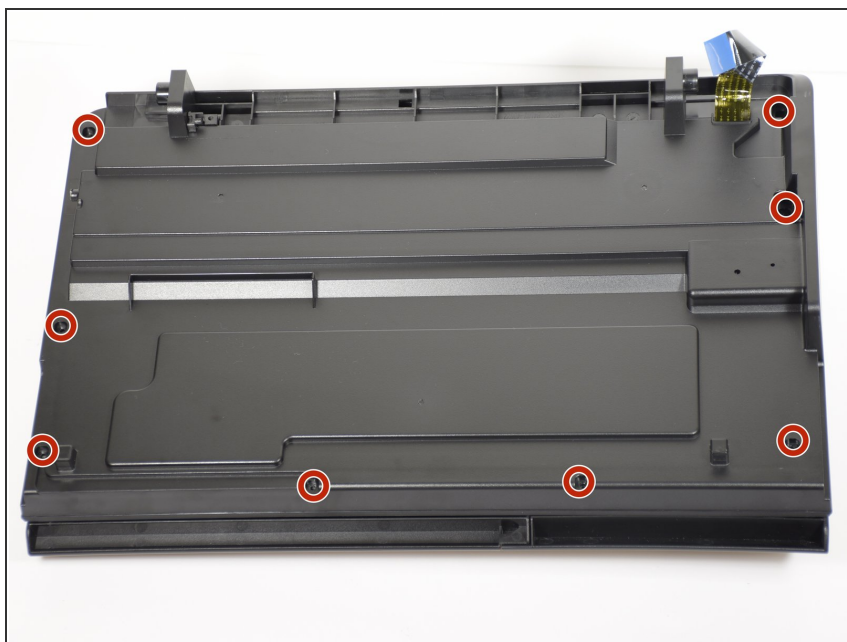
- Slide the power supply out from the chassis.
-  The power supply is still attached; don't pull too quickly.

## Step 10



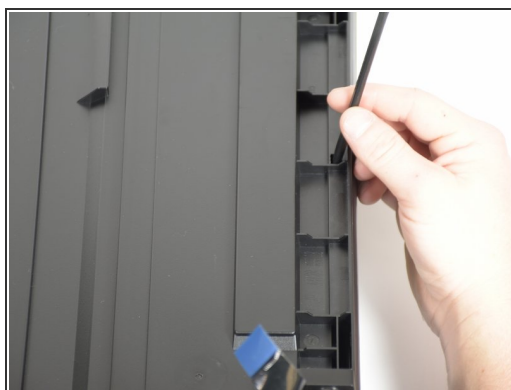
- Remove final cable from power supply.

## Step 11 — Scanner Head



- Remove eight T10 1mm screws from the top hood of the printer.

## Step 12



- Use the nylon spudger to pry the tab.
- Lift up the entire panel.

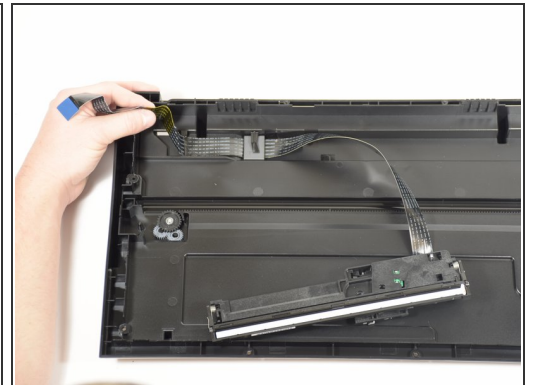
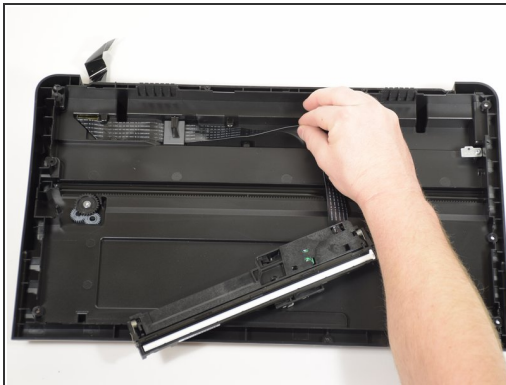
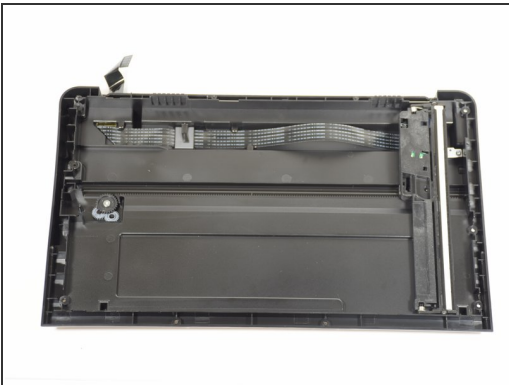


## Step 13



- Lift and flip the entire panel.
- ⓘ Be aware of the scanner head attached to the panel.

## Step 14



- Start with the scanner head in place.
- Unwind the ribbon from the track.
- Detach ribbon completely.

To reassemble your device, follow these instructions in reverse order.