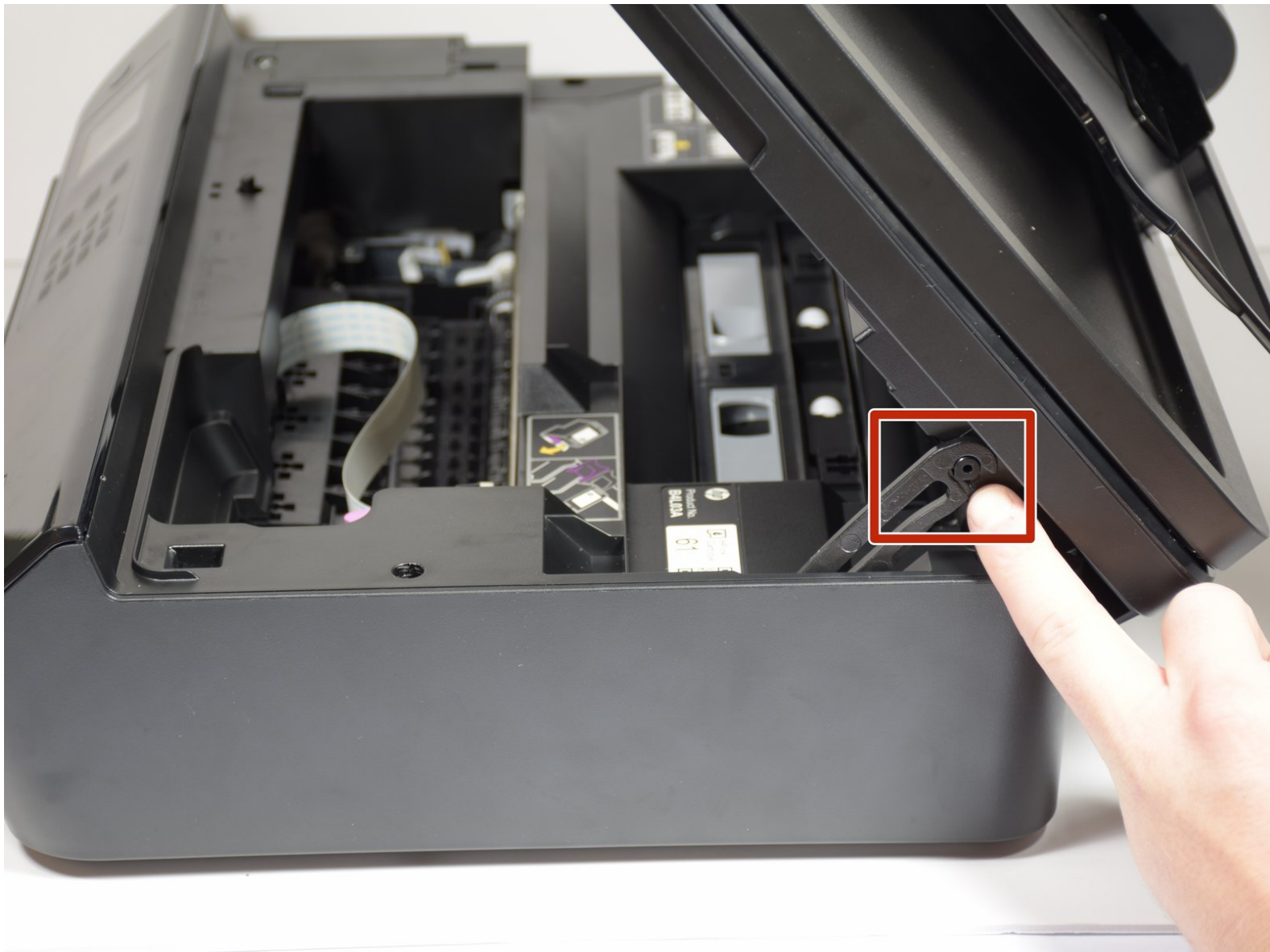




# HP Officejet 4630 Speaker Replacement

How to replace the speaker in your HP Officejet 4630 printer.

Written By: Tyler Allen



# INTRODUCTION

The speaker in your printer could wear out and stop working. This guide will show how to replace the speaker if it stops working. This process will require soldering skills because unplugging the speaker from the control board is a very difficult process.



## TOOLS:

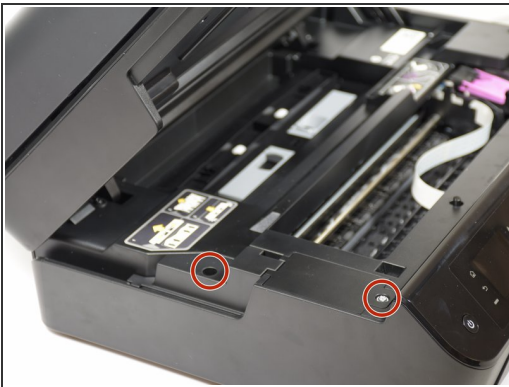
- [T10 Torx Screwdriver](#) (1)
  - [T6 Torx Screwdriver](#) (1)
  - [Heat Gun](#) (1)
  - *Optional*
  - [Soldering Iron](#) (1)
  - [Solder](#) (1)
  - [Wire Stripping/Crimping Tool](#) (1)
-

## Step 1 — Power Supply



- Lift the hood of the printer.

## Step 2



- Remove the two T10 11mm screws.

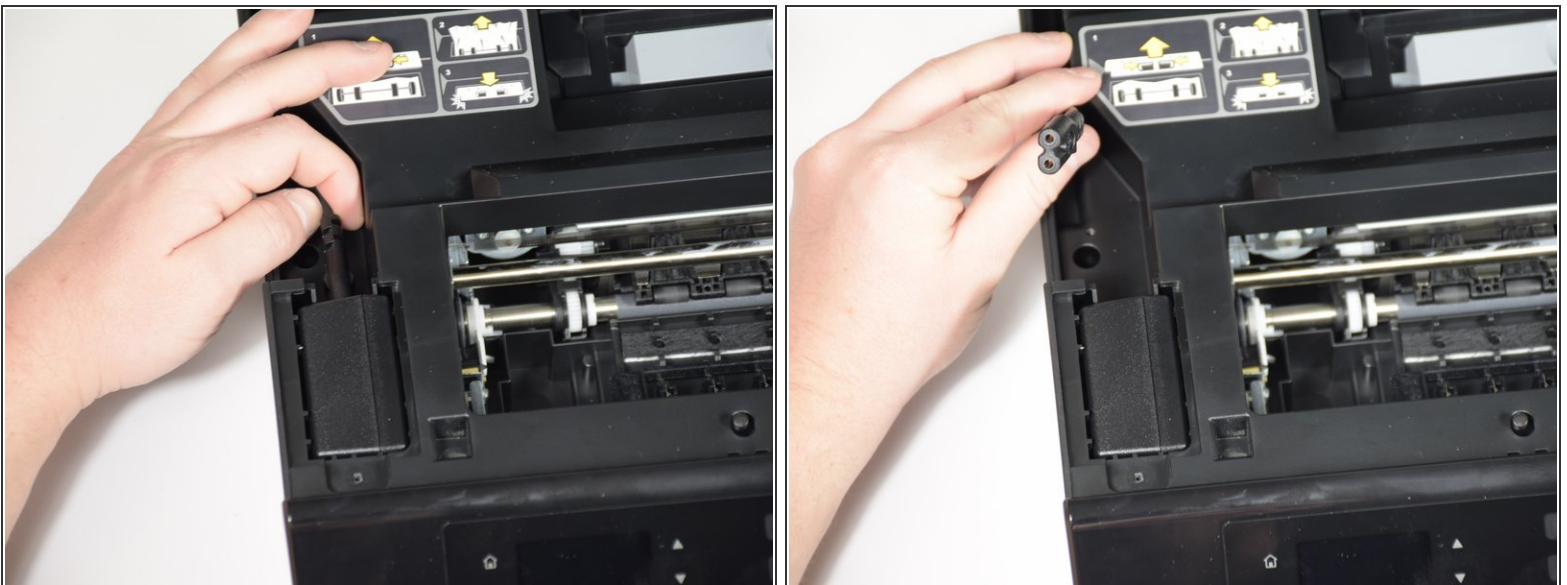


## Step 3



- Remove the panels covering the power brick and cord.

## Step 4



- Remove the cord from the power supply.

## Step 5



- Slide the power supply out from the chassis.
- ⓘ The power supply is still attached; don't pull too quickly.

## Step 6



- Remove final cable from power supply.

## Step 7 — LCD Display



**i** There is a hidden screw underneath the model sticker on the front panel.

- Peel the model sticker off the cover.
- This will expose the T10 screw securing the panel.

## Step 8

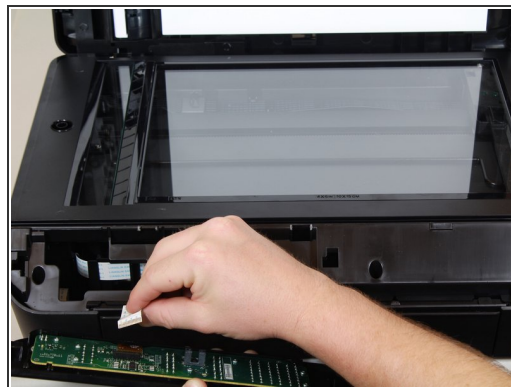
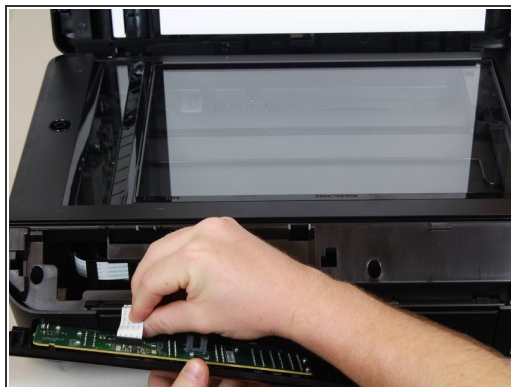
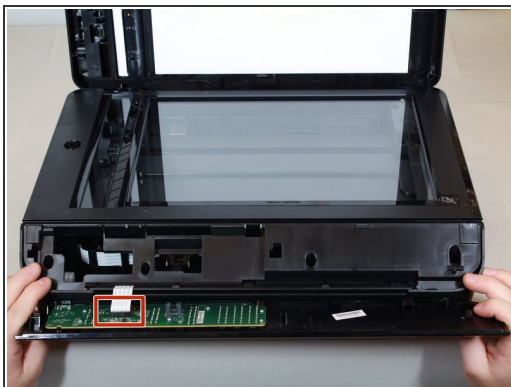


- Remove the single 12mm-T10 screw securing the front panel to the printer body.
- Loosen the panel cover from the printer body.

**i** There is a ribbon cable connected to the backside of the cover. Disconnect the cable before separating the panel completely.

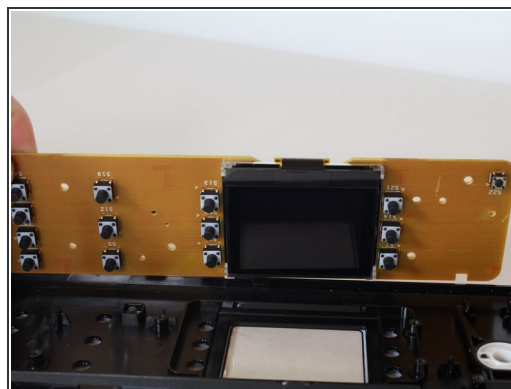
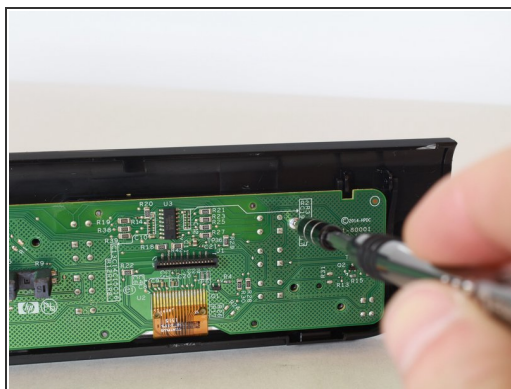


## Step 9



- Gently remove the No-Fuss ribbon cable from the front panel.

## Step 10



- Remove the seven 8mm screws using the Torx T6 screwdriver.
  - Remove the motherboard from the front-panel housing.
- i** The LCD display is on the opposite side.

## Step 11 — Speaker



- Remove the clip that keeps the printer lid from opening all the way with your hands by pulling away from the post on the lid.

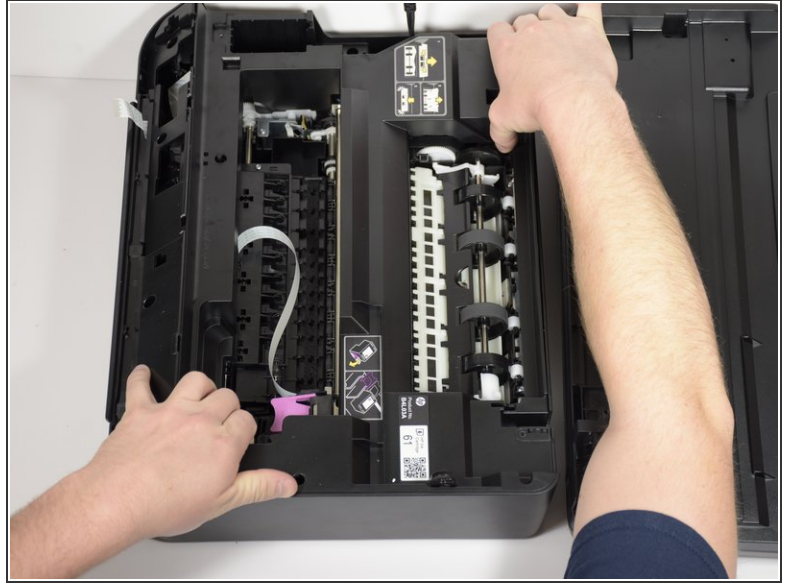
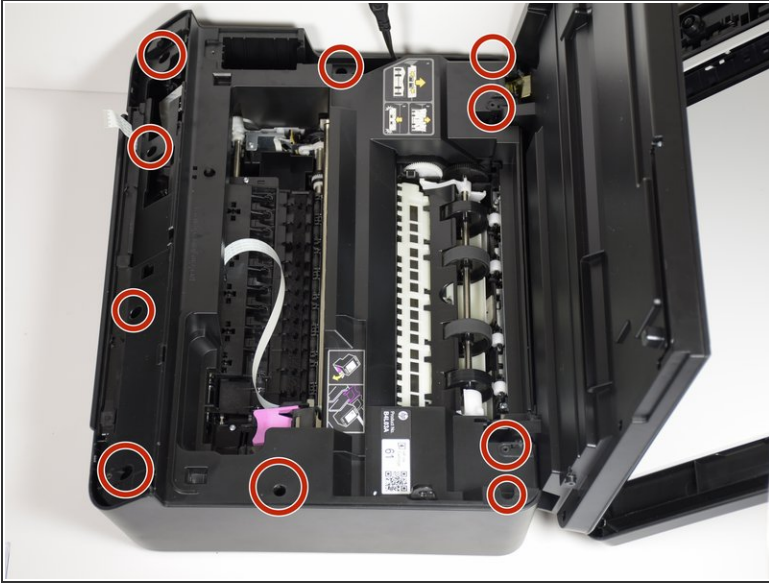
## Step 12



- Remove the paper feed rollers by using your fingers to pinch the indentations together while pulling up.

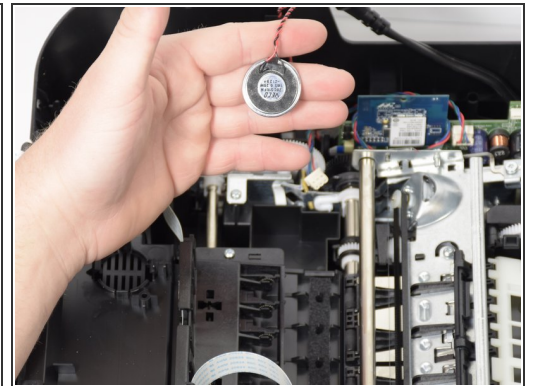
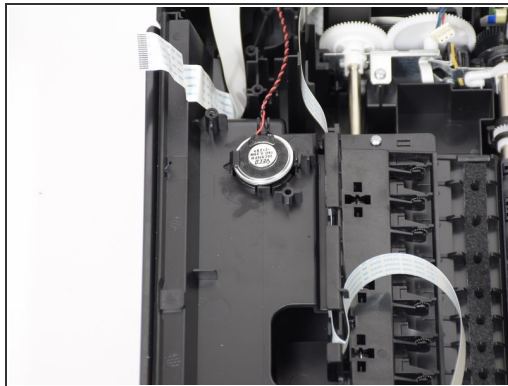
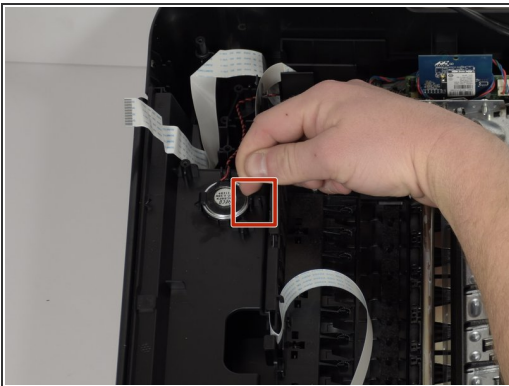


## Step 13



- Remove the ten 11mm-T10 screws with the screwdriver.
- ⓘ The top half of the printer might fall open as you remove the screws closer to the hinges.

## Step 14



- Push the clip holding the speaker in away from the speaker while pulling up on the speaker.
- At this point you must cut and solder on your new speaker.

To reassemble your device, follow these instructions in reverse order.