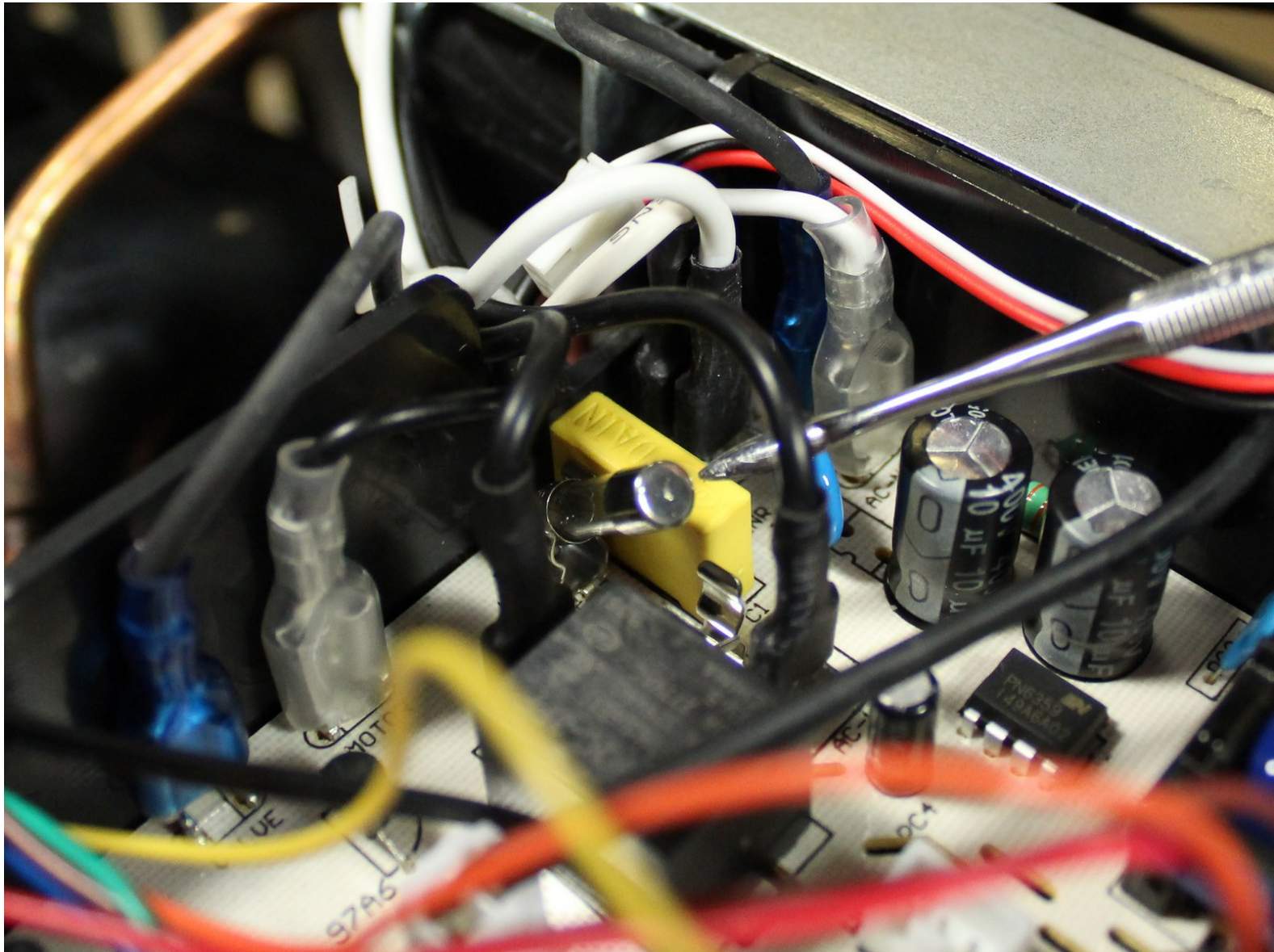




Insignia Ice Maker NS-IMP26SS7 Fuse Replacement

Replace fuse on Insignia Ice Maker.

Written By: Evan Taylor



INTRODUCTION

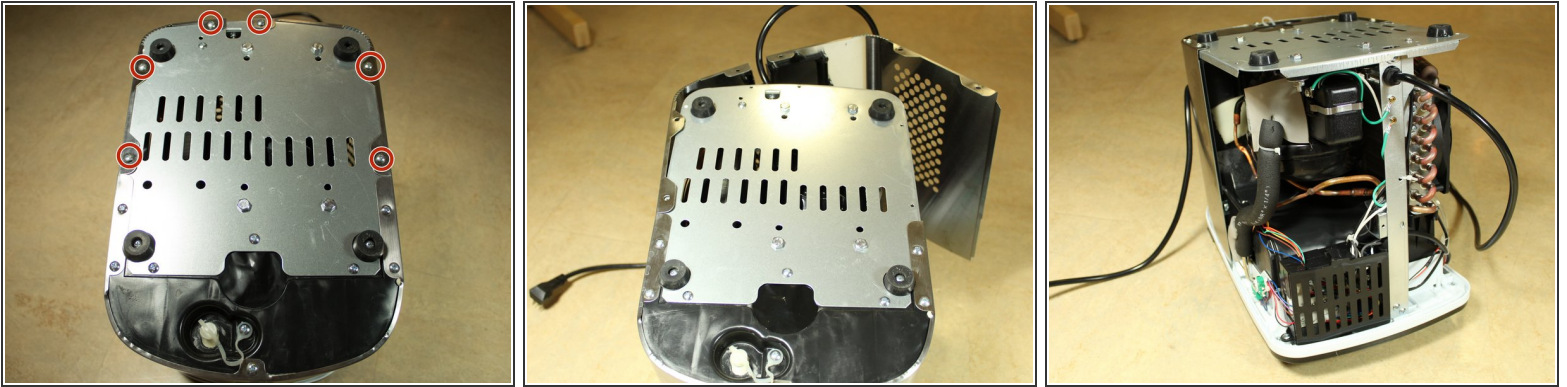
How to replace the fuse on Insignia Ice Maker.



TOOLS:

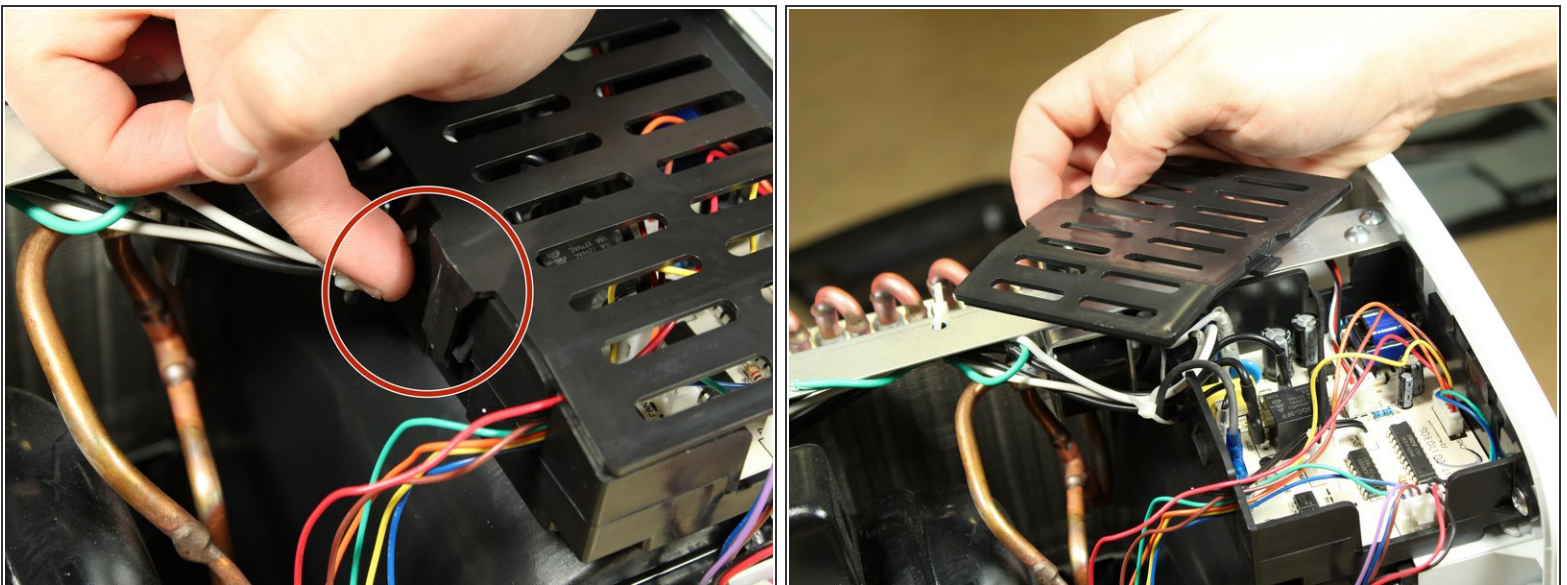
- [Phillips #3 Screwdriver](#) (1)
 - [iFixit Opening Tools](#) (1)
-

Step 1 — Fuse



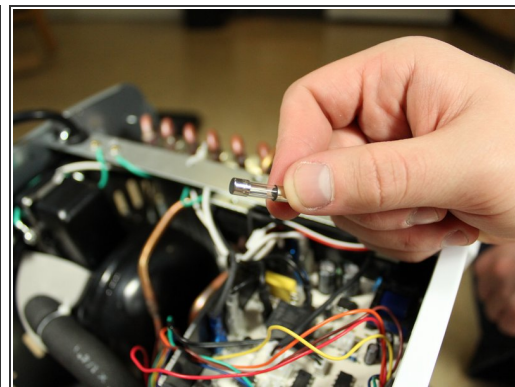
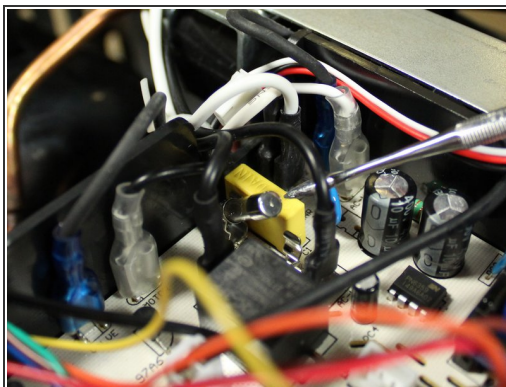
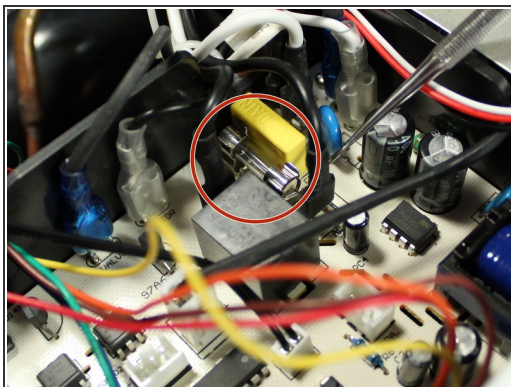
- Remove the 6 screws along the bottom of the rear casing.

Step 2



- Remove the plastic cover over the circuit board by pressing the lever on the side. A pry tool may be required.

Step 3



- Remove the fuse with a plastic pry tool.

To reassemble your device, follow these instructions in reverse order.