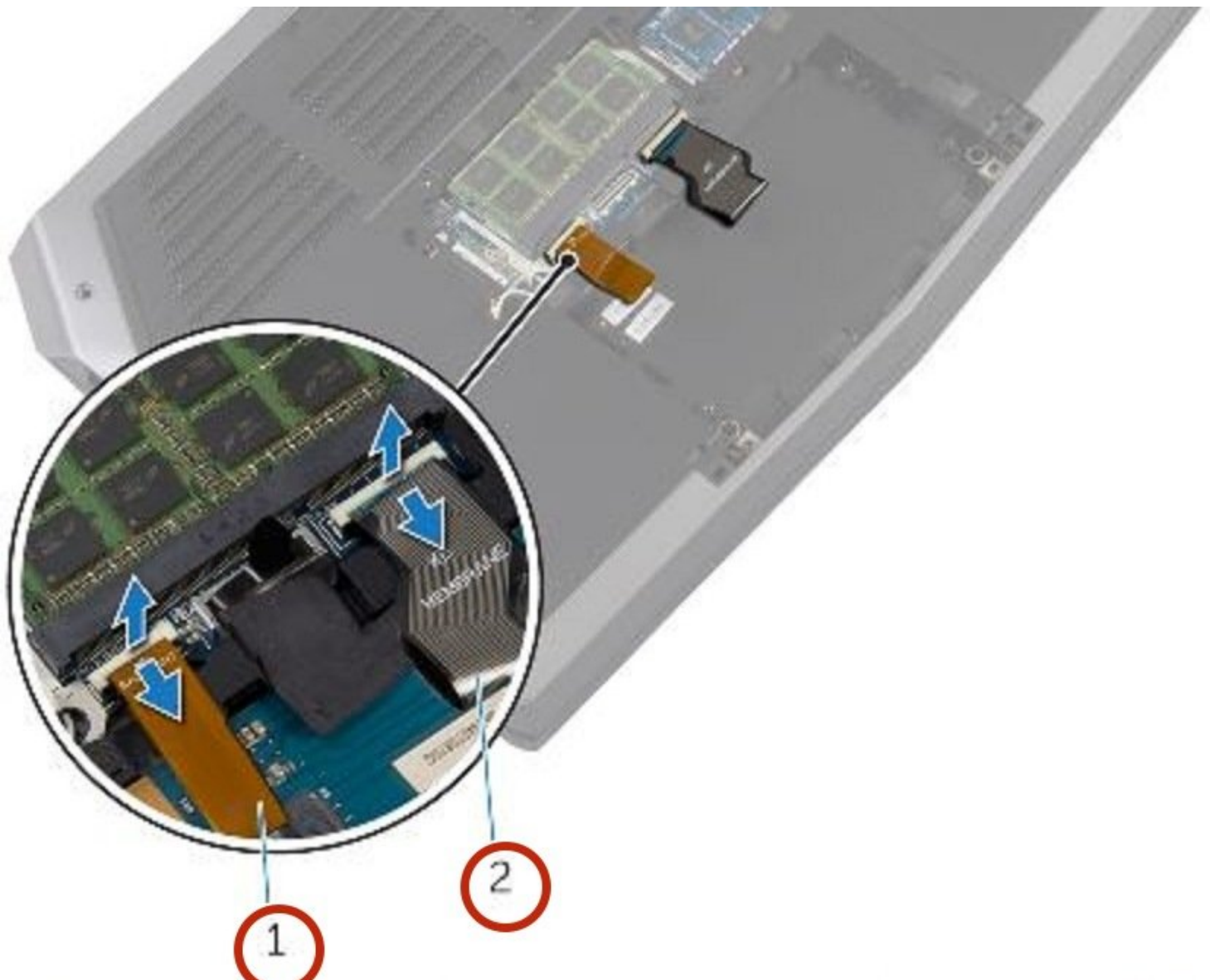




# Dell Alienware 13 Palm Rest Replacement

Dell Alienware 13 Palm Rest Replacement

Written By: Terrence15



---

## INTRODUCTION

In this guide, we will be revealing on how to remove and replace the Palm Rest Replacement on the Dell Alienware 13.

---



### TOOLS:

- [Heavy-Duty Spudger](#) (1)
  - [Phillips #1 Screwdriver](#) (1)
-

## Step 1 — Base Panel



**⚠** Working on an electrical device while plugged in can cause injury due to electrical shock. Ensure that all external power is disconnected from the device.

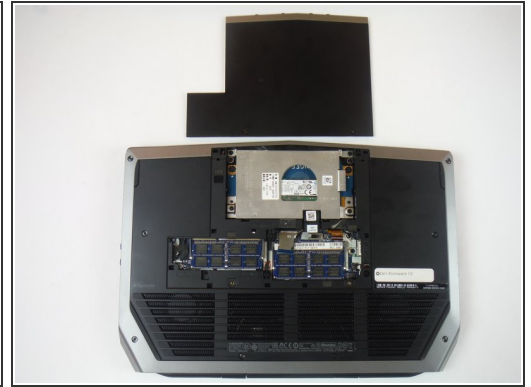
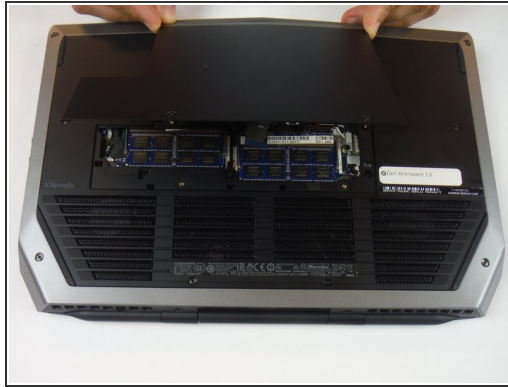
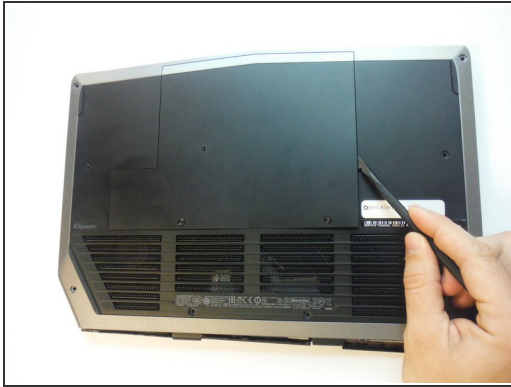
- Close the device and turn the device over.

## Step 2



- Remove (2) 5 mm Phillips head screws attaching the small access panel to the base using a Phillips # 1 screwdriver.
- ⓘ The (2) screws are attached to the base panel with retaining clips and won't completely detach from the panel.

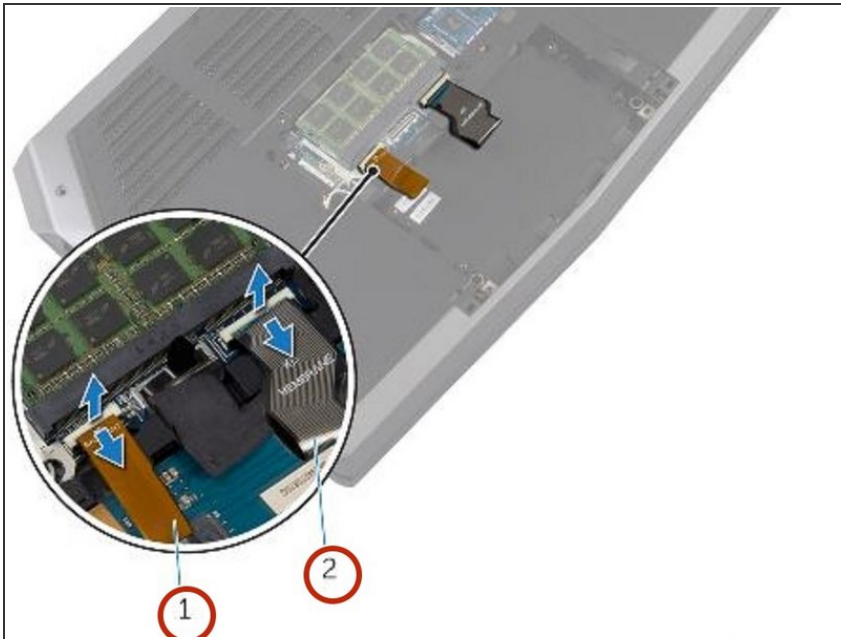
## Step 3



- Remove the small access panel using a heavy duty spudger.



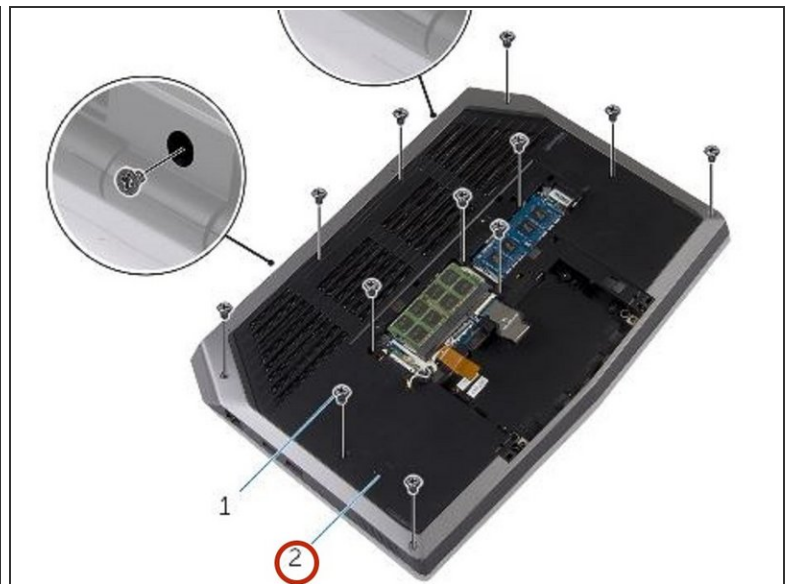
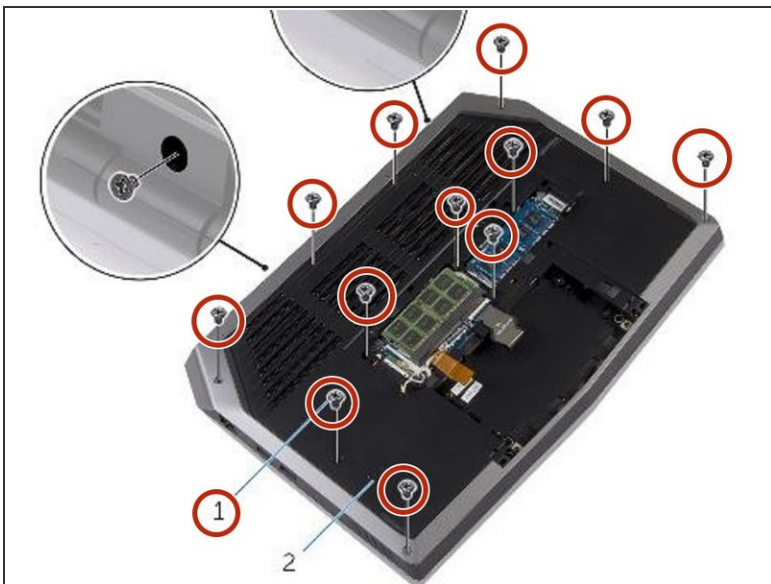
## Step 4 — Disconnecting the Keyboard



**⚠ WARNING:** Before working inside your computer, read the safety information that shipped with your computer and follow the steps in [Before Working Inside Your Computer](#). After working inside your computer, follow the instructions in [After Working Inside Your Computer](#).

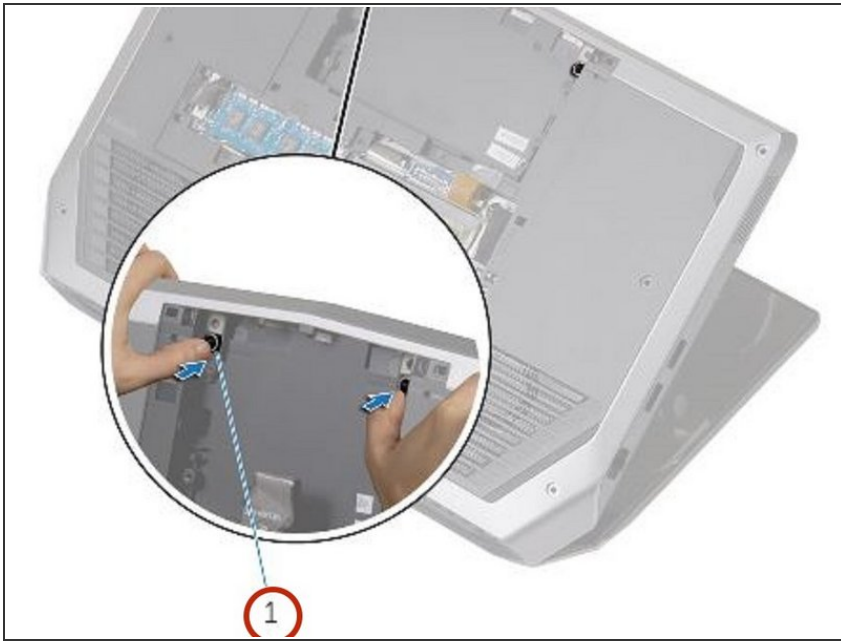
- Lift the latches and disconnect the keyboard and keyboard-backlight cables from the system board

## Step 5 — Removing the Screws



- Remove the screws that secure the palm-rest assembly to the computer base.

## Step 6 — Popping out the Palm-Rest Assembly



- Lift the computer base slightly and push the release tabs on the palm-rest assembly until it pops out.

## Step 7 — Turn the Computer Over



- Turn the computer over and open the display as far as possible.

## Step 8 — Prying the Edges



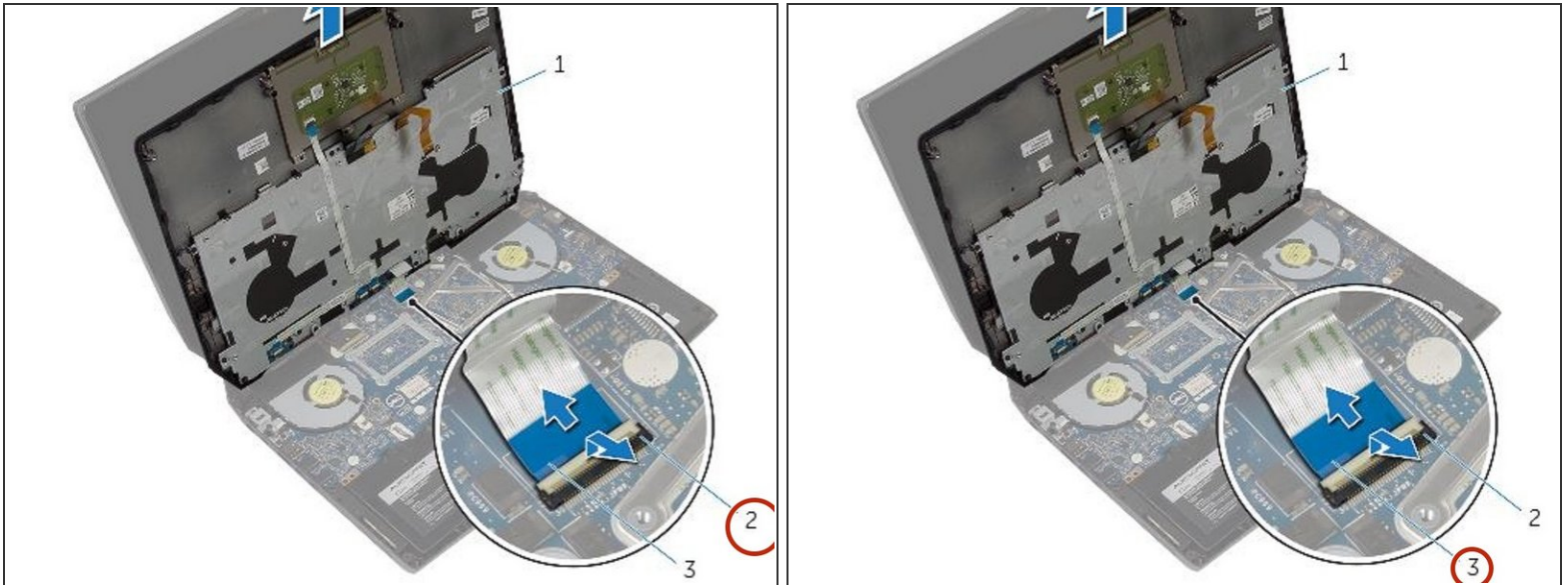
- Using a plastic scribe, pry up along the edges of the palm-rest assembly.

## Step 9 — Lifting the Palm-Rest Assembly



- Gently lift the palm-rest assembly and turn it over.

## Step 10 — Disconnecting the Power-Board Cable



- Lift the connector latch and disconnect the power-button board cable from the system board.

## Step 11 — Removing Parts



- Remove the Keyboard.
- Remove the power-button board.
- Remove the status-light board.
- Remove the touchpad.

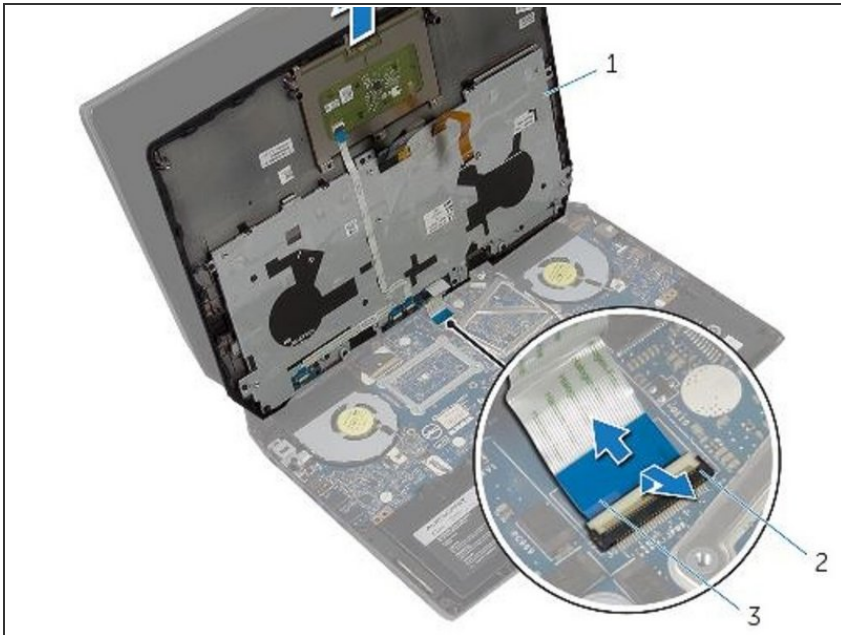


## Step 12 — Replacement



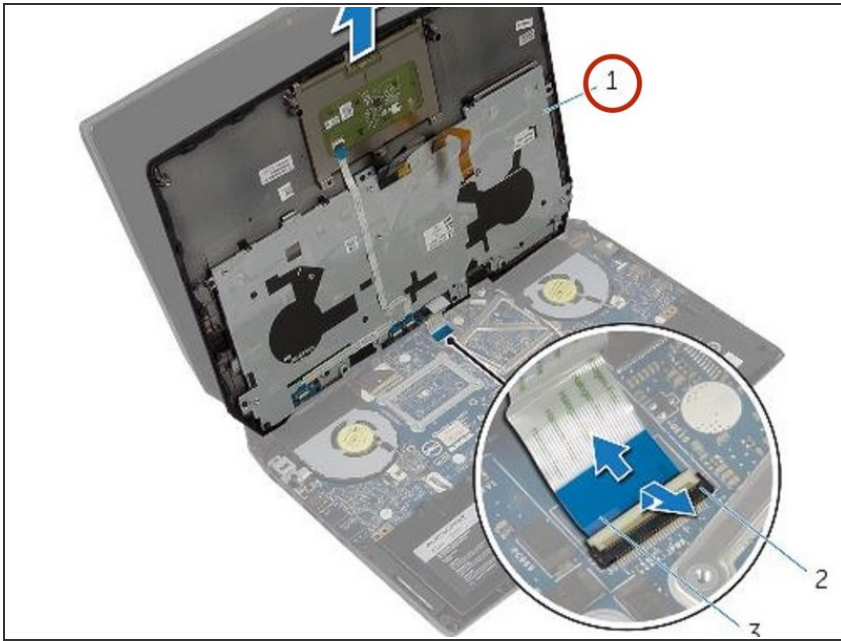
- Replace the touchpad.
- Replace the status-light board.
- Replace the power-button board.
- Replace the keyboard.

## Step 13 — Connecting the Power-Button Board Cable



- Connect the power-button board cable to the system board.

## Step 14 — Aligning the Palm-Rest Assembly.



- Align the palm-rest assembly on the computer base and snap it into place.

## Step 15 — Closing the Display and Turning Over the PC



- Close the display and turn the computer over.

## Step 16 — Replacing Screws



- Replace the screws that secure the palm-rest assembly to the computer base.

## Step 17 — Connect the Keyboard Cable



- Connect the keyboard cable and the keyboard-backlight cable to the system board.

To reassemble your device, follow these instructions in reverse order.