



2010 Toyota Camry SE Dome Light Bulbs Replacement

This guide will demonstrate how to replace the dome light bulbs in a 2010 Toyota Camry.

Written By: Gabriel Durazo



INTRODUCTION

Rear dome light bulbs go out in cars and it's convenient to have them light up when needed. Simply replacing the bulbs will solve the problem and allow backseat riders to utilize light when it's dark out.



TOOLS:

- [Flathead Screwdriver](#) (1)



PARTS:

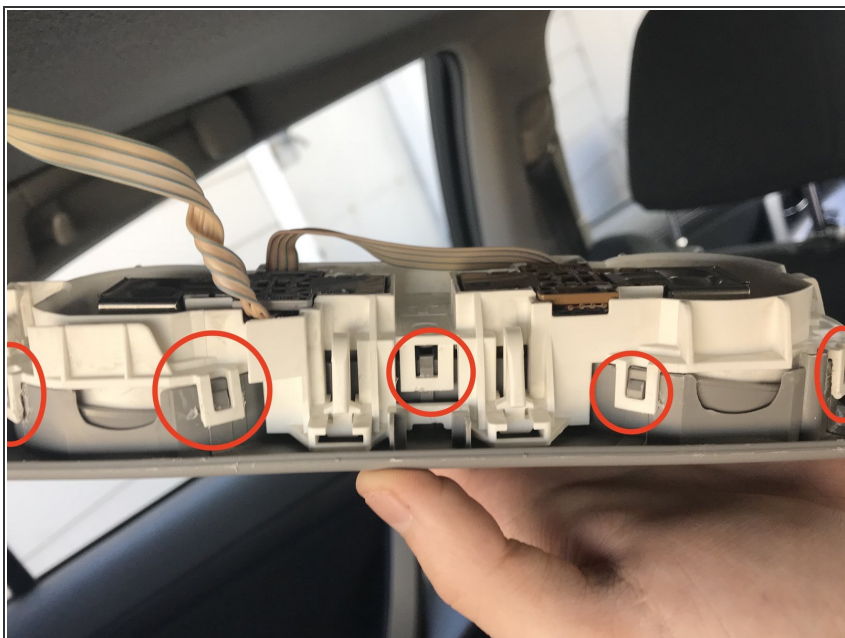
- [Hose Pliers](#) (1)

Step 1 — Dome Light Bulbs



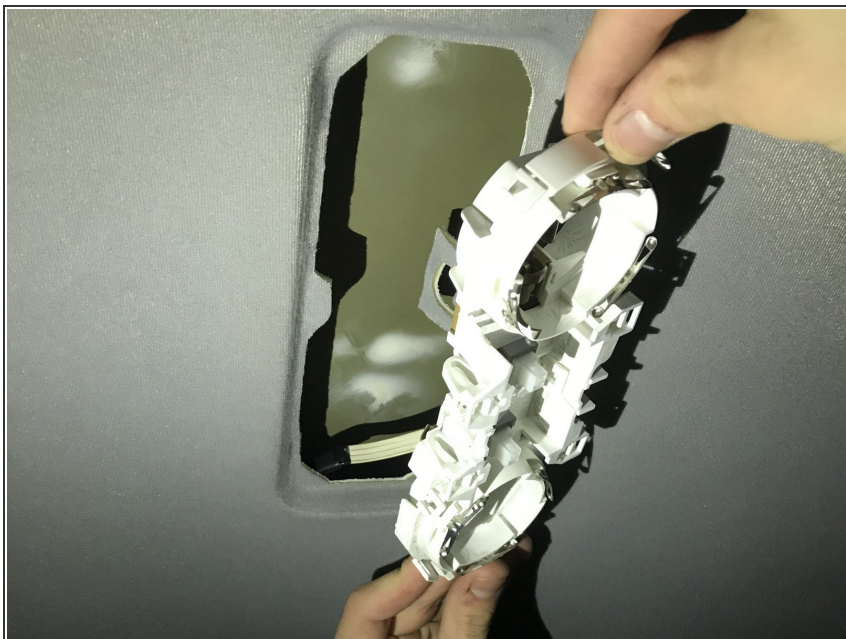
- Use one hand to push up on the roof surrounding the plastic cover and utilize a flathead screwdriver to gently pry out light fixture and cover.

Step 2



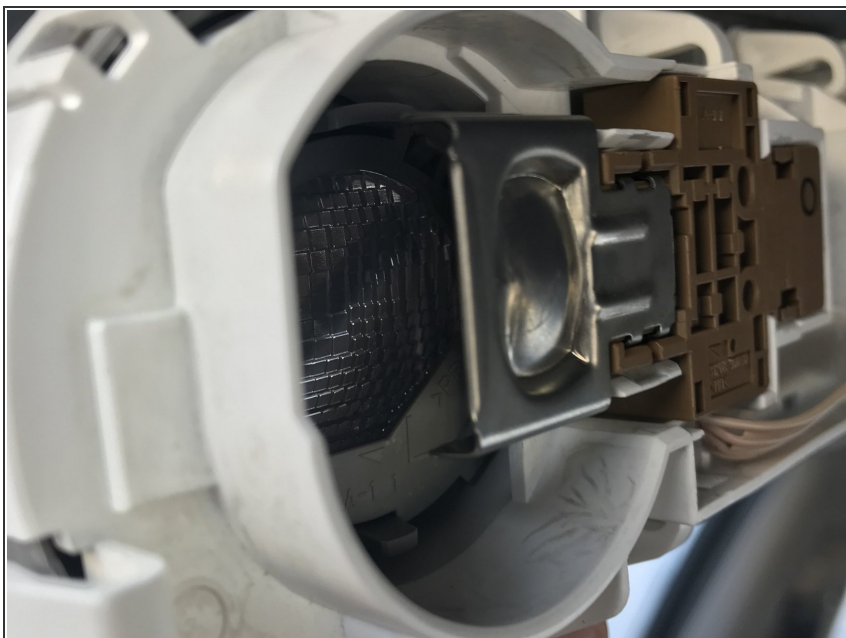
- Starting with the 2 clips on each side of the light, remove the 10 clips on the fixture.
- ⓘ The user should loosen every clip before removing fixture.

Step 3



- Once the clips are loose, pop off the plastic cover grey plastic cover.

Step 4



- Using hose pliers, pull out the bulb being replaced.
- Now, insert new bulb by securing it into socket and pushing into place.

Step 5



- Reinstall plastic light fixture by pushing cover back into place.
- ⓘ Fixture should easily snap back in with proper placement.

Step 6



- Finally, test the new lights by turning them on and off a few times for 30 seconds or so to assure they work properly.
- ⓘ If they do not work then the next suggestion would be to check the fuse box before heading to the dealer.
- ⓘ Sometimes fuses blow out which can be spotted by careful analysis. If two parts of the fuse do not meet such as disconnected wires then you have a blown fuse.