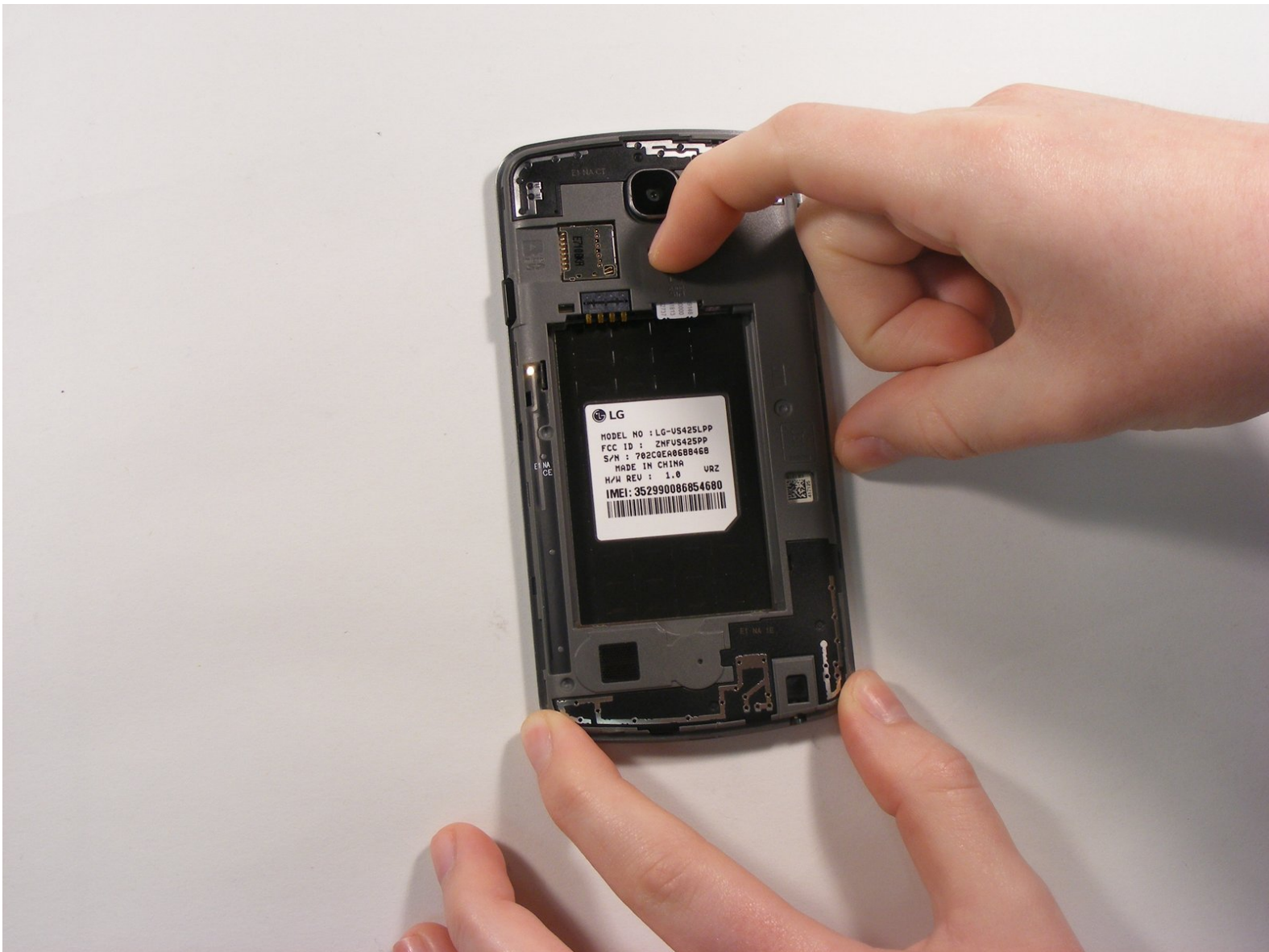




LG Optimus Zone 3 SIM Card Replacement

In the following guide, users will be able to change or replace the SIM card of the LG Optimus Zone 3 cell phone.

Written By: Cooper Parnell



INTRODUCTION

SIM cards are tiny chips unique to each device and are used to differentiate between each individual's phone. SIM cards store personal information and data. Without a SIM card, the device will not function. Your SIM card may be malfunctioning if you are having trouble connecting to the internet, or sending or receiving texts.



TOOLS:

- [Tweezers](#) (1)
-

Step 1 — Battery



- Insert fingernail into the slot on the back left side of the phone and pry open.

Step 2



- Remove faulty battery.
- ⓘ The battery is missing from our device, however, it would be located in the section in-between the fingers.

Step 3 — SIM Card



- Insert fingernail in groove between SIM card and base of phone, pushing down on the SIM Card to begin removal.

Step 4



- Use Tweezers to pull down on the SIM Card to completely remove.

To reassemble your device, follow these instructions in reverse order.