



# Alcatel Pixi Theatre Battery Replacement

This guide will allow you to replace a dead or non responsive battery in your Alcatel Pixi Theatre.

Written By: Noah Elliott



---

# INTRODUCTION

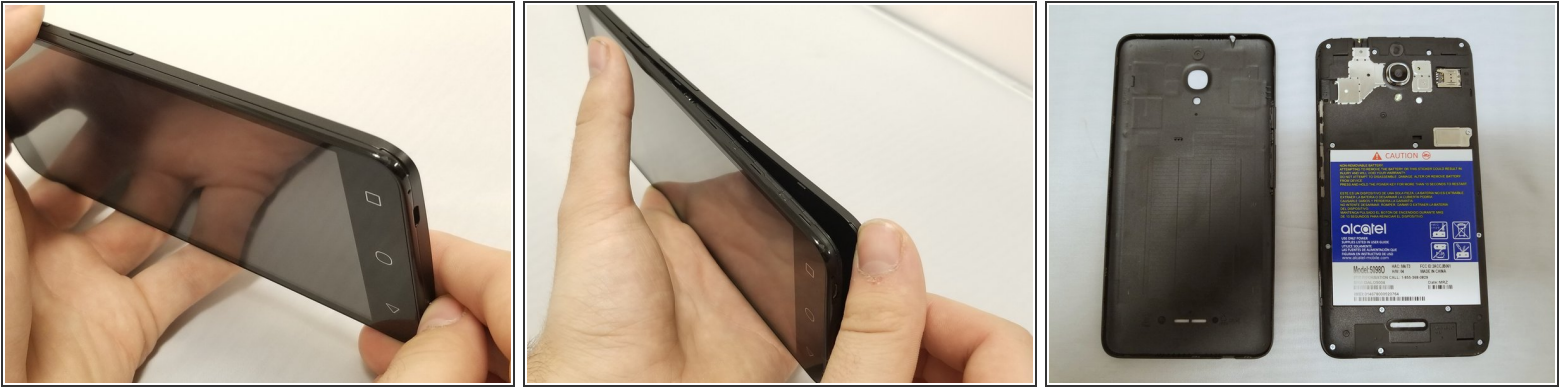
This guide will allow you to replace a dead or non responsive battery in your phone.

---

## TOOLS:

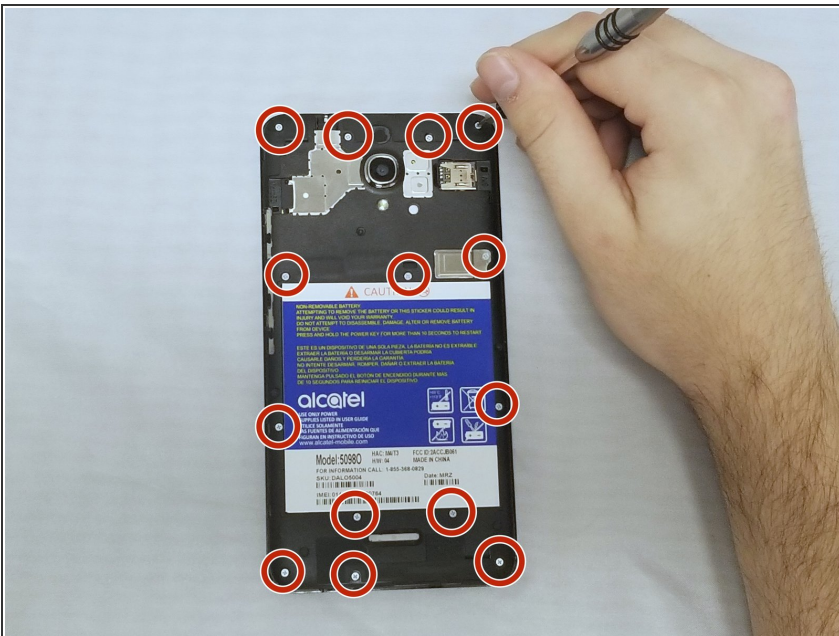
- [Phillips #000 Screwdriver](#) (1)
  - [Jimmy](#) (1)
  - [Spudger](#) (1)
-

## Step 1 — Battery



- Take off the case by flipping the phone over and wedging your finger in the notch on the bottom edge. Pry up until you hear the clicking and the edge releases. Continue to pry the case up, moving around the perimeter of the phone.
- It should pop off in various places around the perimeter of the phone, and then come off easily.

## Step 2



- Using a Phillips #000 screwdriver, remove the fourteen 3mm screws that connect the housing and the battery.

## Step 3



- Remove the metal bracket covering the battery connector flex cable. Now that it's unscrewed, it should come out easily.

## Step 4



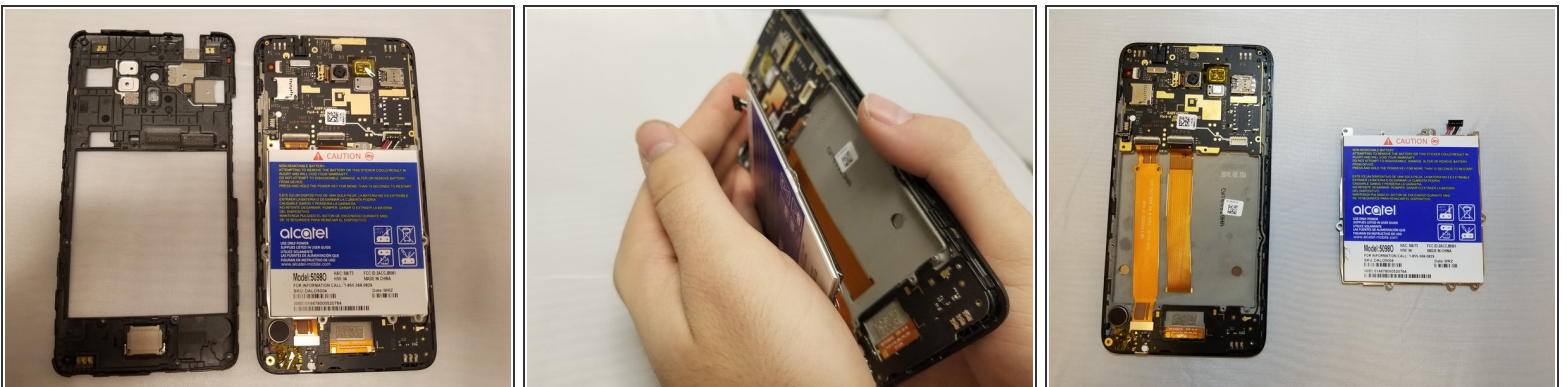
- Disconnect the battery connector flex cable by sliding the black spudger under the wires and carefully prying up the entire terminal casing.

## Step 5



- ⚠ Be careful not to insert the Jimmy too far into the phone when prying the housing apart; if you do, you may damage the motherboard inside.
- ⚠ Once removed from the rest of the phone, the sides of the housing are flimsier than the top and bottom. Be careful not to bend the housing when taking it off.
- Starting at the top left corner and moving around the perimeter of the phone, insert the Jimmy between the housing and the phone and gently pry it up.

## Step 6



- Remove the blue battery by lifting it straight up, or by gently turning the phone over into your palm and catching the battery as it comes out.

To reassemble your device, follow these instructions in reverse order.