



Alcatel Pixi Theatre USB Charging Port Replacement

This guide will show how to take apart the Alcatel Pixi Theatre so access to the USB port is available.

Written By: Nathan Fife



This document was generated on 2020-11-28 06:27:54 AM (MST).

INTRODUCTION

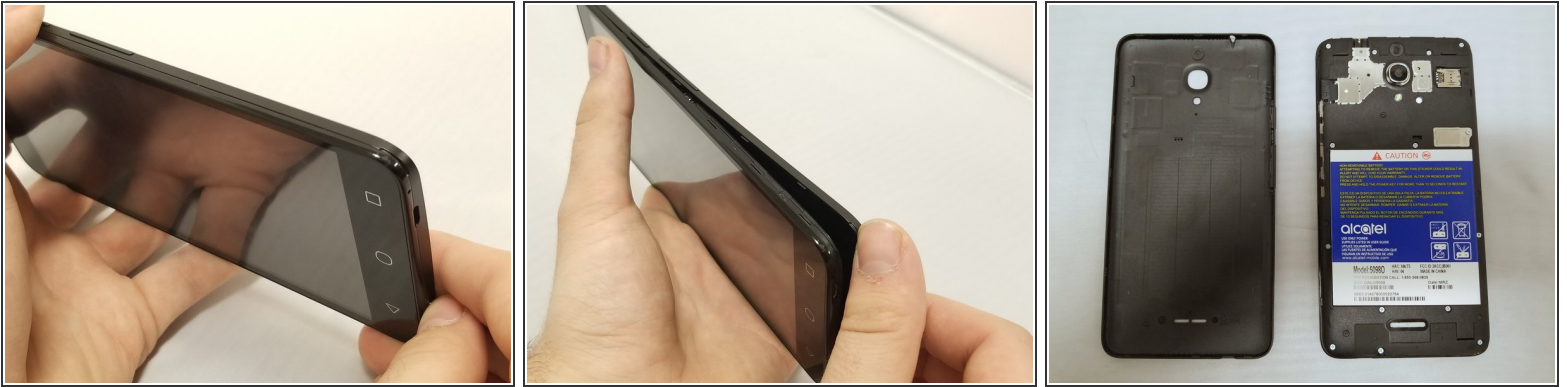
USB charging ports can wear out or break off internally, which can prevent the device from charging. This guide is to show you how to take apart your phone and access the port for replacement.



TOOLS:

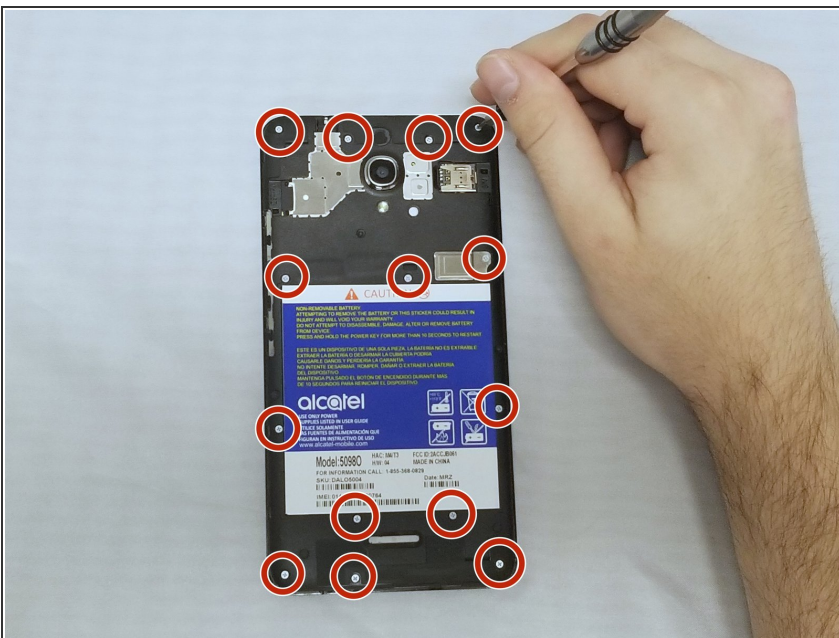
- [Phillips #000 Screwdriver](#) (1)
 - [Jimmy](#) (1)
 - [Spudger](#) (1)
-

Step 1 — Battery



- Take off the case by flipping the phone over and wedging your finger in the notch on the bottom edge. Pry up until you hear the clicking and the edge releases. Continue to pry the case up, moving around the perimeter of the phone.
- It should pop off in various places around the perimeter of the phone, and then come off easily.

Step 2



- Using a Phillips #000 screwdriver, remove the fourteen 3mm screws that connect the housing and the battery.

Step 3



- Remove the metal bracket covering the battery connector flex cable. Now that it's unscrewed, it should come out easily.

Step 4



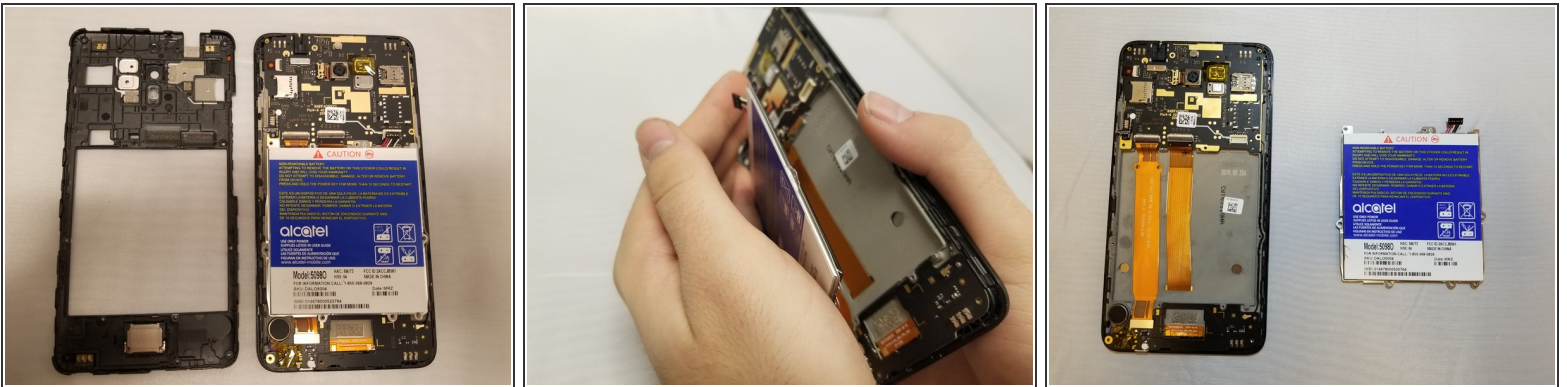
- Disconnect the battery connector flex cable by sliding the black spudger under the wires and carefully prying up the entire terminal casing.

Step 5



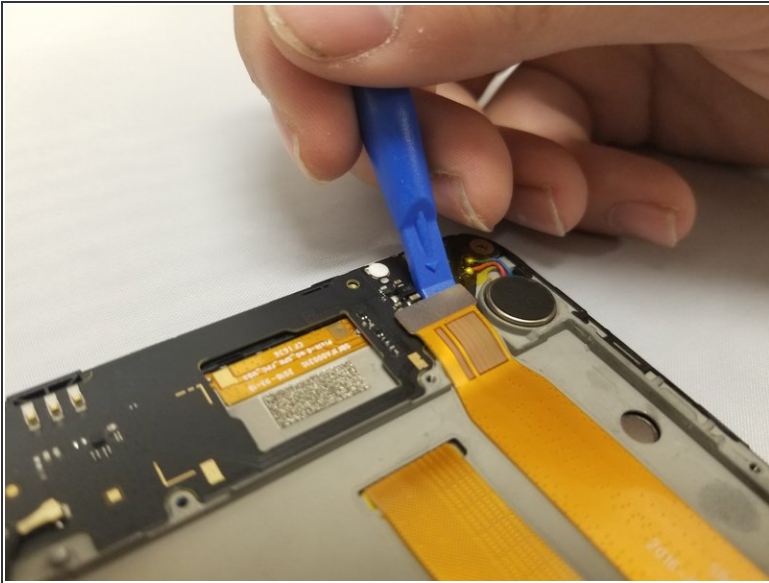
- ⚠ Be careful not to insert the Jimmy too far into the phone when prying the housing apart; if you do, you may damage the motherboard inside.
- ⚠ Once removed from the rest of the phone, the sides of the housing are flimsier than the top and bottom. Be careful not to bend the housing when taking it off.
- Starting at the top left corner and moving around the perimeter of the phone, insert the Jimmy between the housing and the phone and gently pry it up.

Step 6



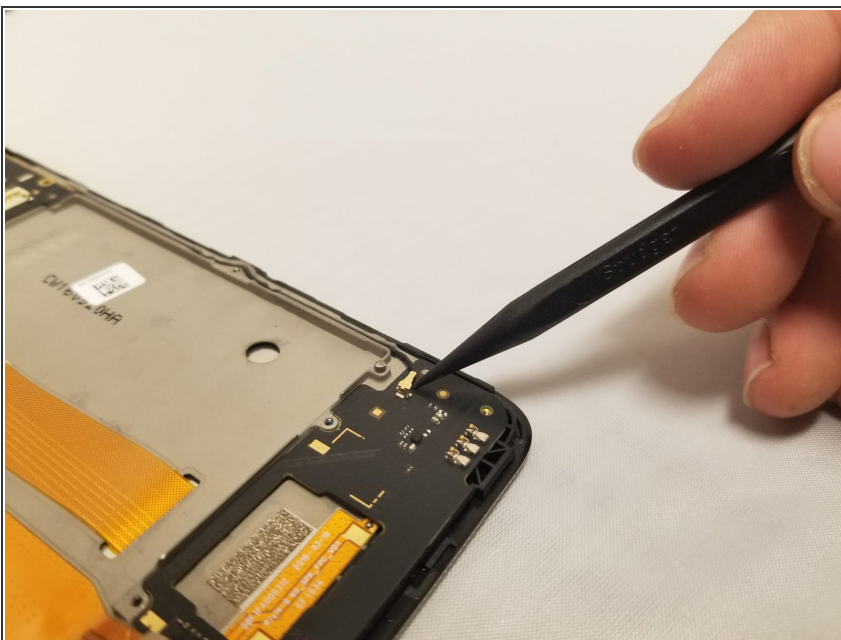
- Remove the blue battery by lifting it straight up, or by gently turning the phone over into your palm and catching the battery as it comes out.

Step 7 — USB charging port



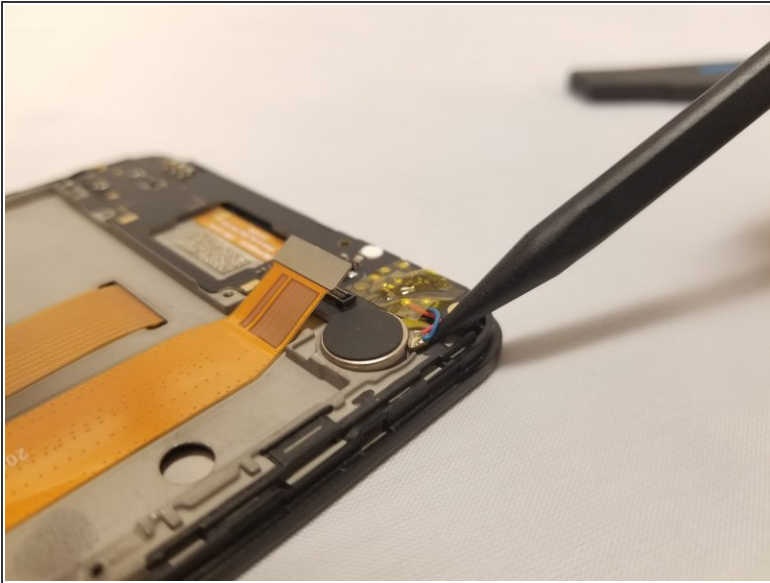
- Turn the phone so the top is facing you. The board the USB charging port is attached to is on the bottom.
- Disconnect the other side of the outer orange ribbon cable by locating the socket terminal at the base of the phone and prying it up using the blue spudger.

Step 8



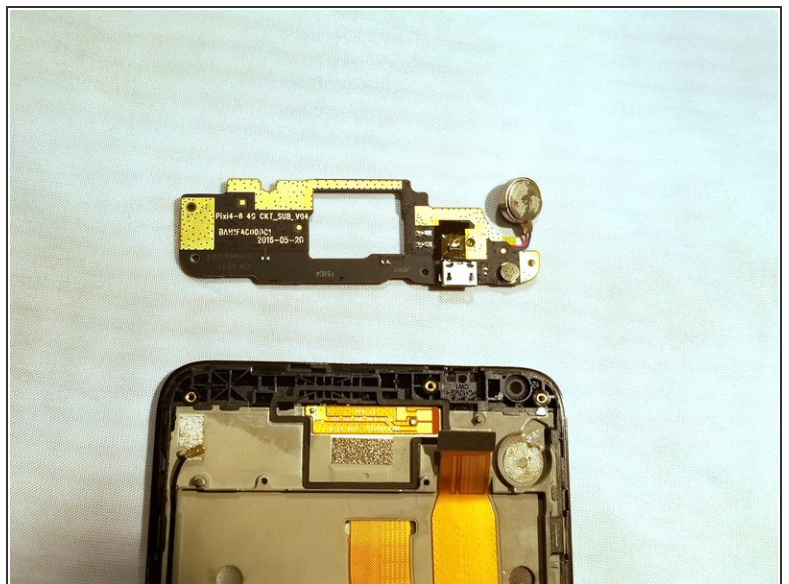
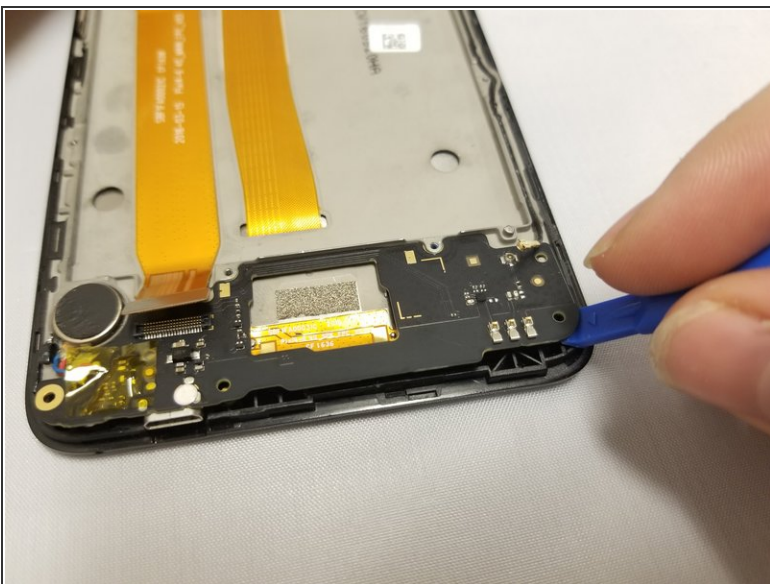
- Disconnect the antenna flex cable by gently prying up the golden connection with the black spudger.
- Slide the pointed end gently under the socket until it releases and hangs loose.

Step 9



- ⚠ Be sure that you're reaching down far enough into the crack before you begin prying the vibrator up, or you could break it.
- Carefully pry up the vibrator with the black spudger, being mindful of its connecting wires. Do not disconnect the vibrator from the board.

Step 10



- Using the black spudger, pry off the board the USB charging port is attached to.

To reassemble your device, follow these instructions in reverse order.