



# PowerBook G4 Aluminum 17" 1.67 GHz (High-Res) Modem Replacement

Written By: Walter Galan



# INTRODUCTION

Replace your modem to regain dial-up internet access.



## TOOLS:

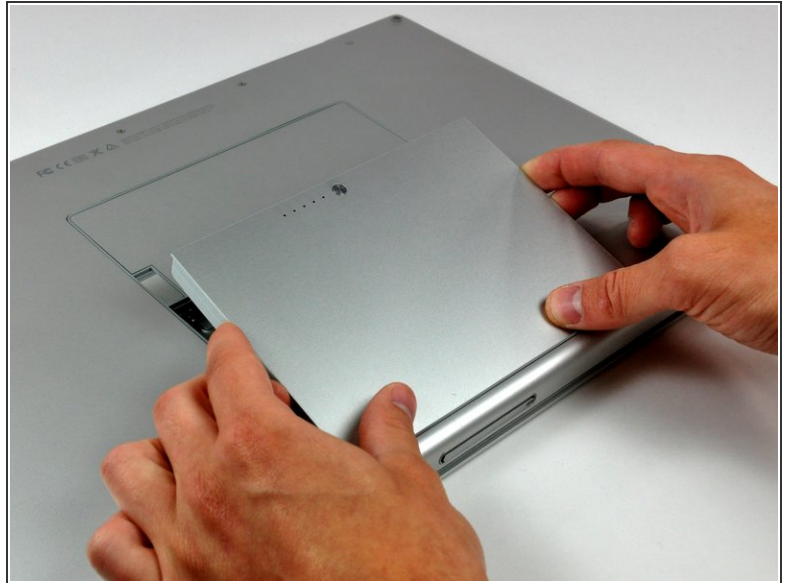
- [4mm Nut Driver](#) (1)
- [Phillips #00 Screwdriver](#) (1)
- [Spudger](#) (1)
- [T8 Torx Screwdriver](#) (1)



## PARTS:

- [G4 Aluminum 15" 1.33/1.5/1.67 GHz Modem](#) (1)
- [G4 Aluminum 17" 1.67 GHz \(HR\) Modem Cable](#) (1)

## Step 1 — Battery



- Use your thumbs to push the two battery retaining tabs away from the battery.
- The battery should pop up enough to rotate it toward yourself and lift it out of the lower case.

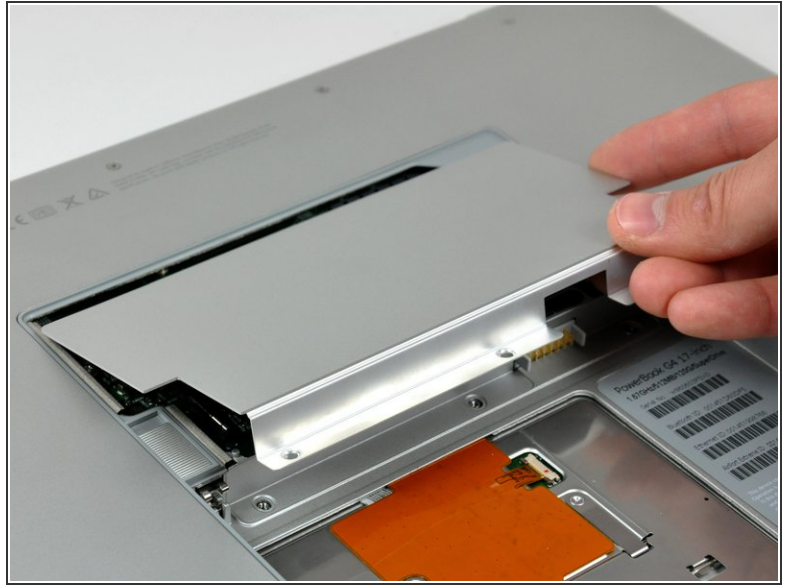
## Step 2 — Memory Door



- Remove the three 2.3 mm Phillips screws securing the memory cover to the lower case.

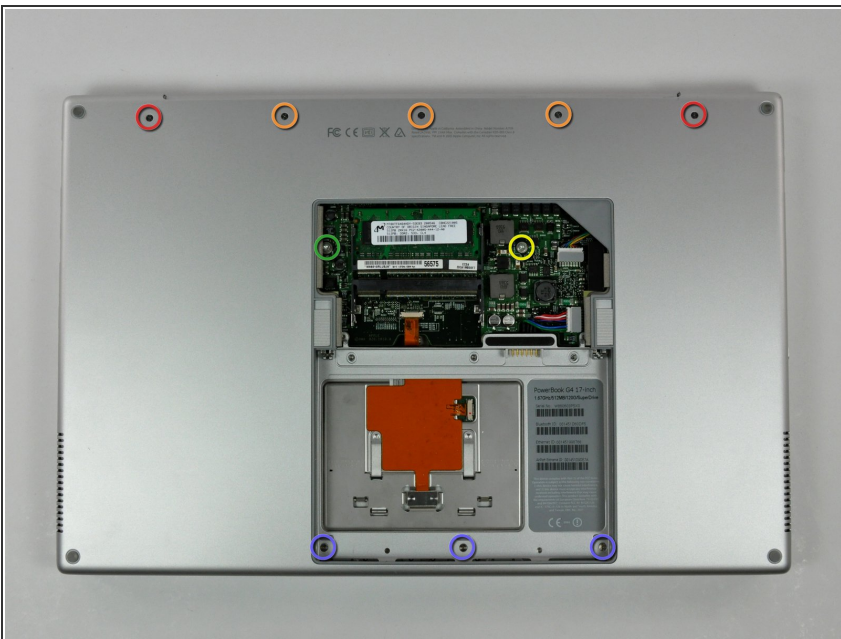


### Step 3



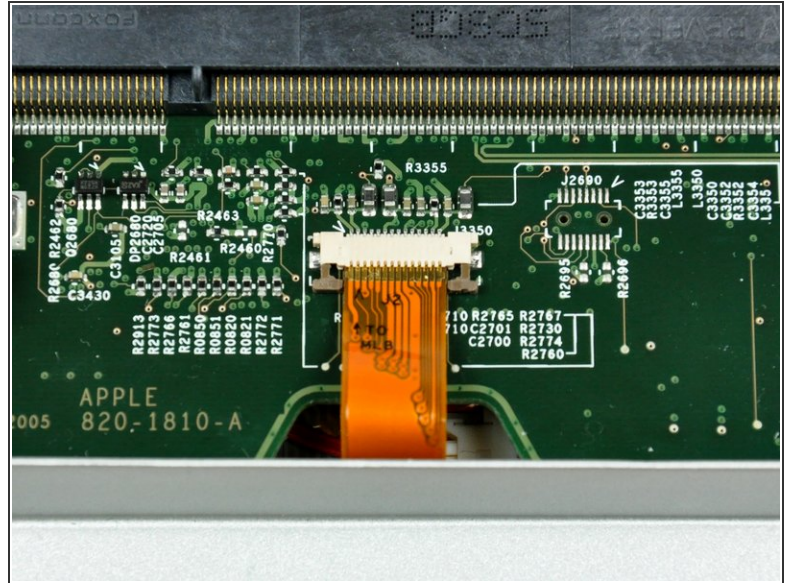
- Lift the memory cover slightly and pull it toward yourself to remove it from the lower case.

### Step 4 — Upper Case



- Remove the following ten screws:
  - Two 14.7 mm shouldered Phillips.
  - Three 12.3 mm Phillips.
  - One 3.8 mm T8 Torx.
  - One 6.8 mm T8 Torx.
  - Three 1.3 mm Phillips.

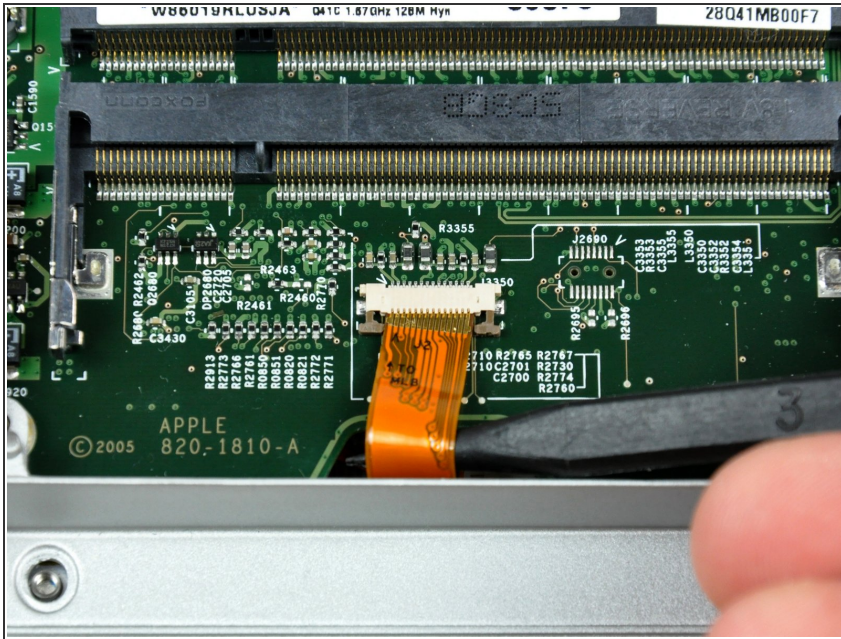
## Step 5



- ❗ The ZIF cable is located underneath the bottom RAM slot. If your PowerBook has both RAM slots occupied, make sure to [remove](#) the RAM chip.
- Use your fingernails to separate the ZIF cable lock away from its socket. (Move the two brown bits down 1mm)
- ⚠ The ZIF cable lock will move about a millimeter away from the socket before it stops (see picture 2). **Do not** try to remove the ZIF cable lock.



## Step 6



- Use the tip of a spudger to slide the trackpad ribbon cable out of its socket.

## Step 7



- Remove the four 3.4 mm Phillips screws from the PC card side of the PowerBook.
- ☑ When replacing these screws, you must reinstall each screw in the correct order. Begin by installing the screw closest to the display hinge, and go out from there.

## Step 8



- Remove the four 3.4 mm Phillips screws from the DVI connector side of the PowerBook.
- ★ When replacing these screws, you must reinstall each screw in the correct order. Begin by installing the screw closest to the display hinge, and go out from there.
- ⓘ During reassembly, make sure to reinstall the two screws on the right into their appropriate locations, and not the DVI port anchor holes.

## Step 9



- Depress the display latch release button and open your display.



## Step 10



- Starting near the display, lift the upper case straight up off the lower case, minding any cables that may get caught.

## Step 11 — Modem



- If necessary, peel back the strip of aluminum tape covering the modem cable.

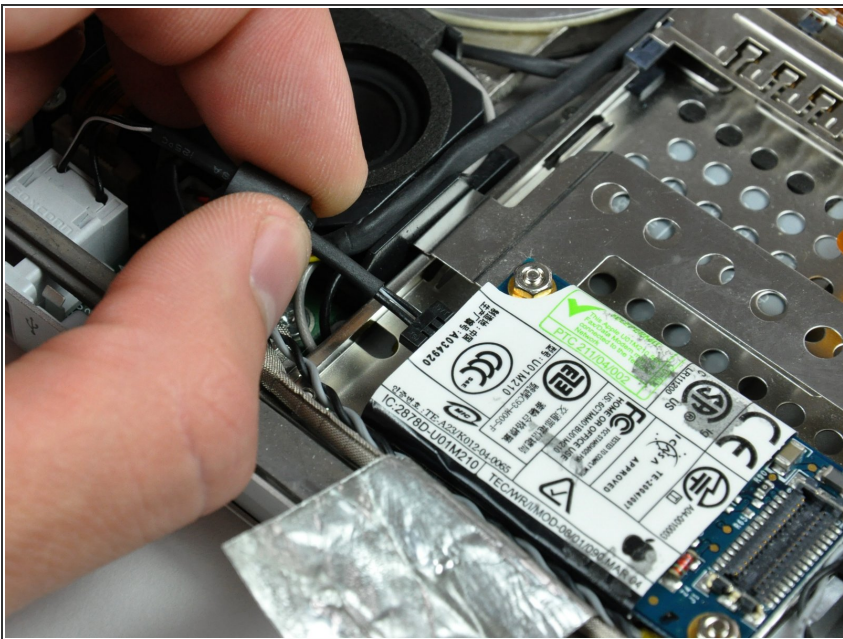


## Step 12



- Use the flat end of a spudger to pry the modem cable connector up off the modem.

## Step 13



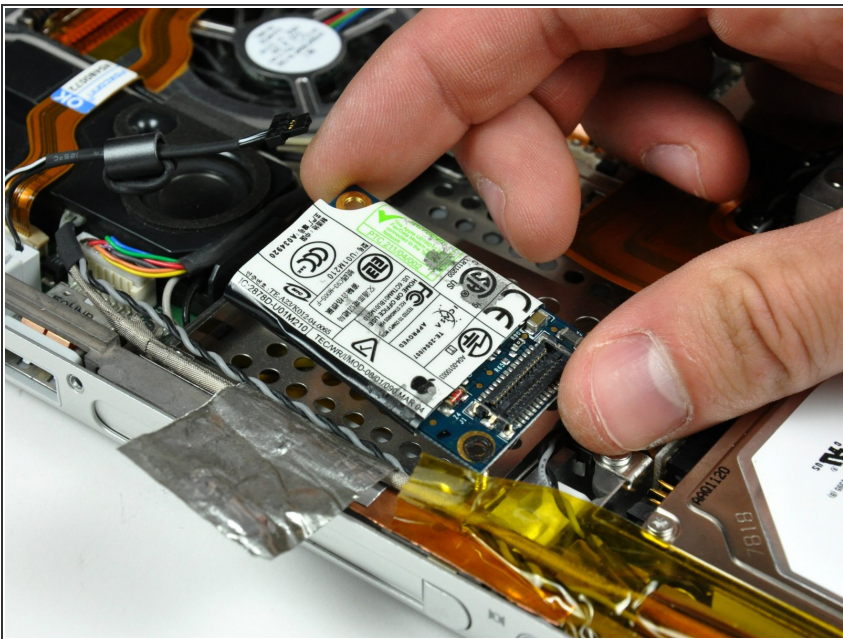
- Disconnect the RJ-11 cable from the modem.

## Step 14



- Use a 4 mm nut driver to remove the two nuts securing the modem to the PC card cage.

## Step 15



- Lift the modem straight up off the studs on the PC card cage.

To reassemble your device, follow these instructions in reverse order.