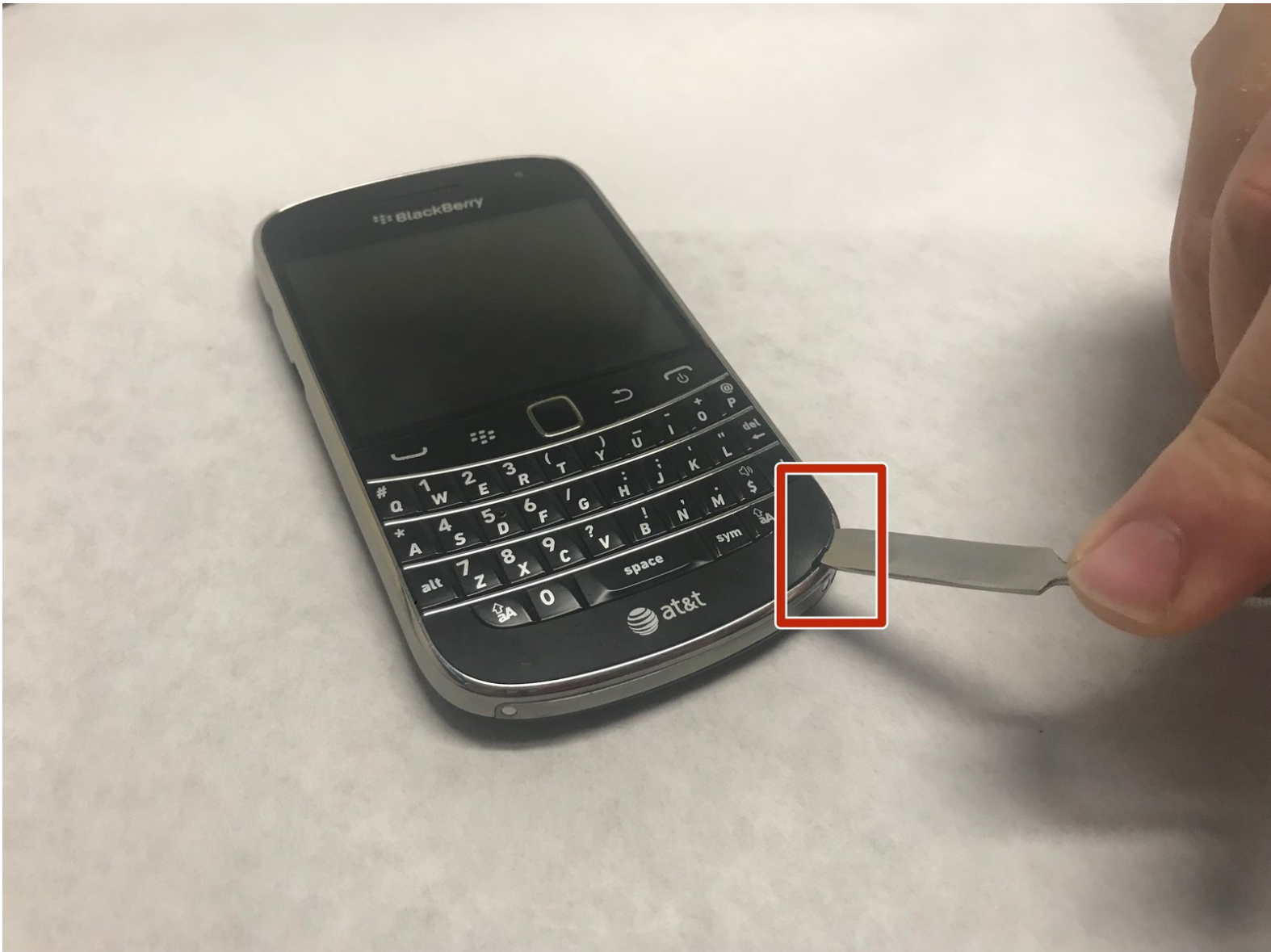




Blackberry Bold 9900 Keyboard Replacement

Written By: Chris Velasquez



INTRODUCTION

Replacing the keyboard of the BlackBerry Bold 9900 is a simple task that will allow you to become familiar with your device and restore functionality of the keys.



TOOLS:

- [Spudger](#) (1)
 - [T5 Torx Screwdriver](#) (1)
-

Step 1 — Battery



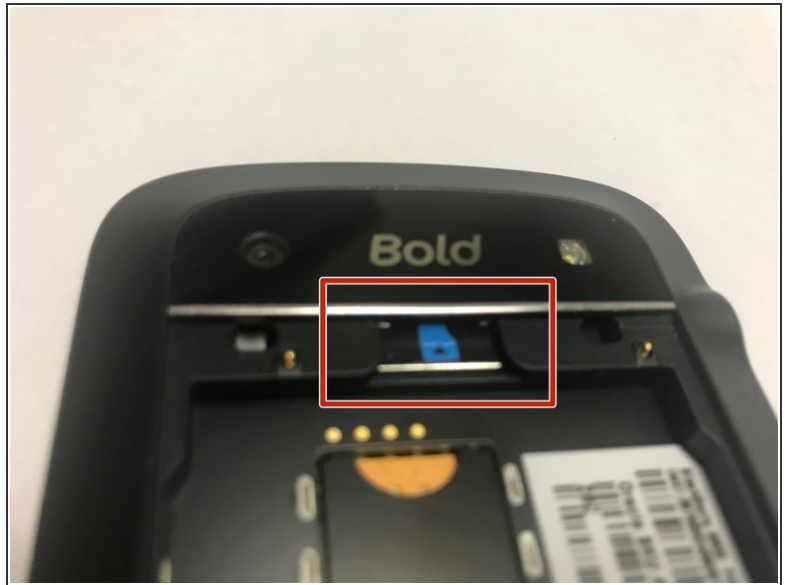
- Place phone screen down.
- Use your finger to lift upward on the battery case.
- Pull the cover away from the battery.

Step 2



- Lift the edge of battery with the green stripe upward to remove battery.

Step 3 — MicroSD card



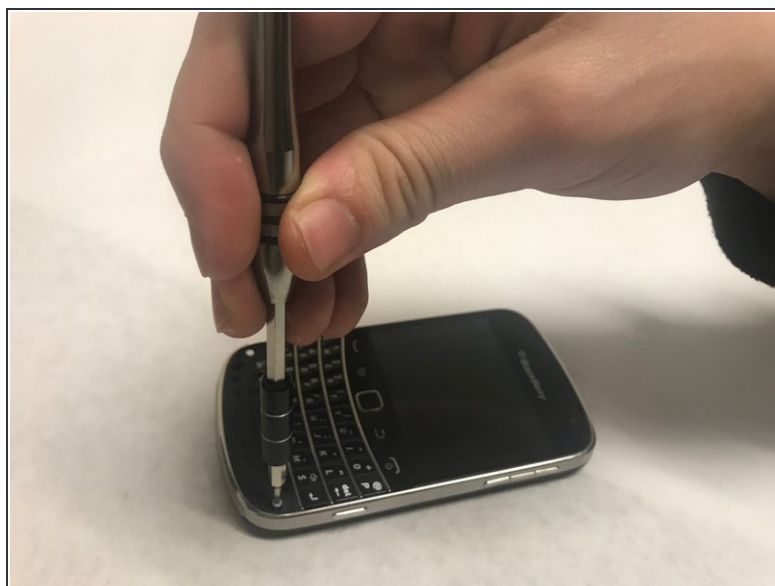
- The MicroSD card is located where the red rectangle is shown.
- To remove MicroSD card, push the card inward towards the top of the phone then release. The MicroSD card will be ejected.

Step 4 — Keyboard



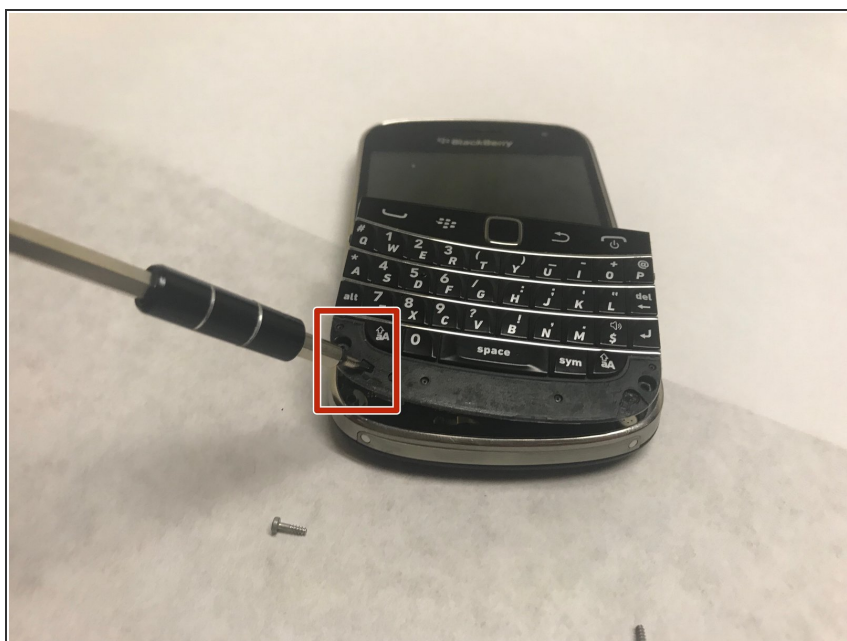
- Lift the bezel at the bottom of the phone up and peel it away from the phone.

Step 5



- Remove the two exposed screws using the T5 Torx screwdriver.

Step 6



- Now lever the keyboard up using the screwdriver in the indicated hole.

Step 7



- The keyboard is attached via a ribbon cable. Pull the cable up to remove the keyboard.

To reassemble your device, follow these instructions in reverse order.