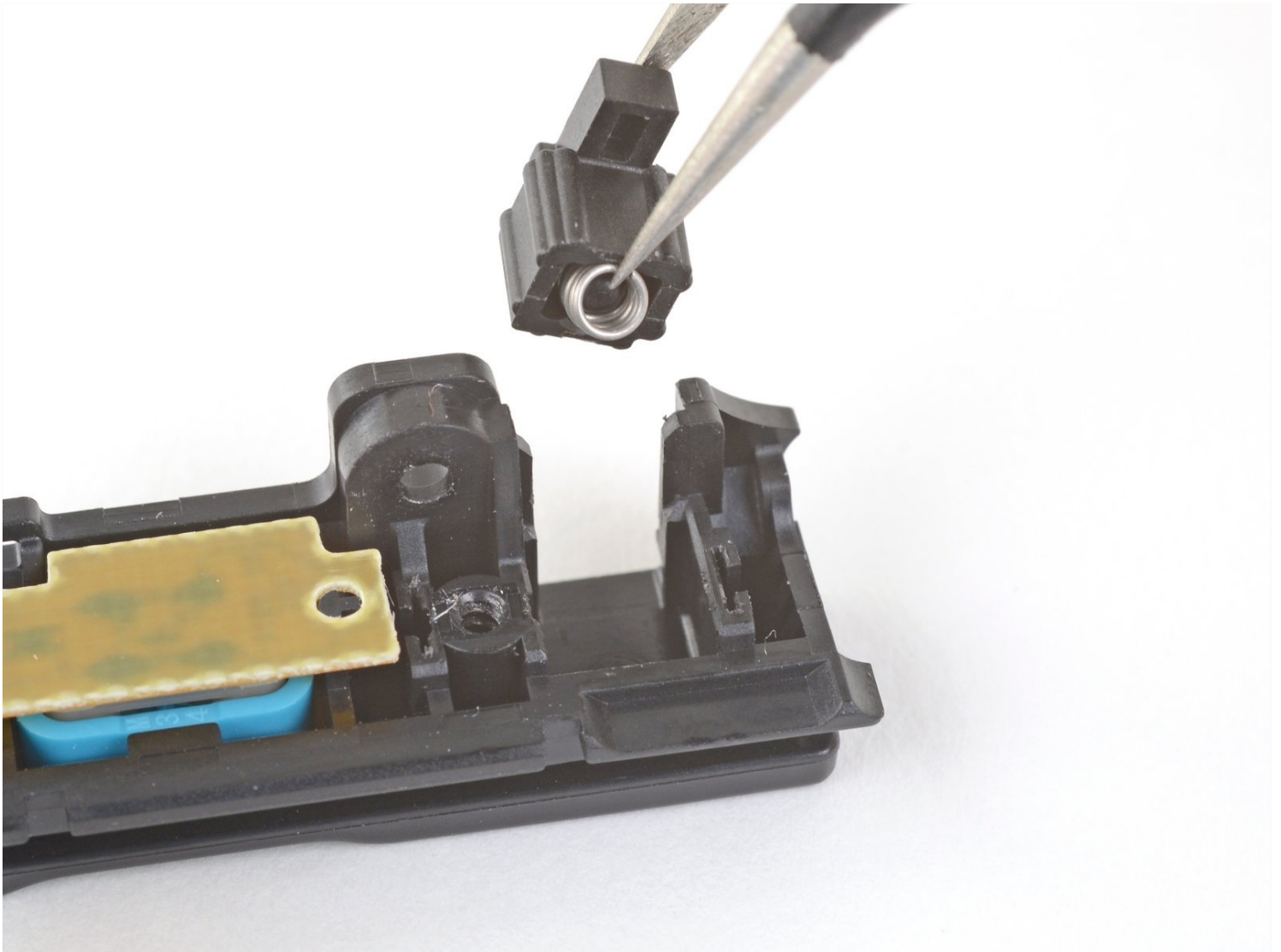




Joy-Con Buckle Lock Replacement

Use this guide to replace the buckle lock in a...

Written By: Adam O'Camb



INTRODUCTION

Use this guide to replace the buckle lock in a Nintendo Switch Joy-Con with a metal one, or a new plastic one.

There are a few minor differences between the left and right Joy-Cons, but none that will affect the procedure. These steps apply to **both** Joy-Cons.

🔧 TOOLS:

[Tweezers](#) (1)
[Phillips #00 Screwdriver](#) (1)
[Tri-point Y00 Screwdriver](#) (1)
[iFixit Opening Picks \(Set of 6\)](#) (1)
[Spudger](#) (1)

⚙️ PARTS:

[Nintendo Switch Joy-Con Replacement Metal Buckle Locks](#) (1)

Step 1 — Remove the case screws



- Use a Tri-point Y00 driver to remove the four 6.3 mm-long screws from the back panel of the Joy-Con.

Step 2 — Separate the halves of the Joy-Con



- Insert an opening pick into the seam at the bottom edge of the controller (opposite the L and ZL buttons).
- Slowly slide the flat edge of your opening pick up the side of the Joy-Con.
 - ⓘ Be careful not to slide the opening pick too far inside the Joy-Con. This may damage the inner components. The back panel loosens easily, so not much pressure is needed.

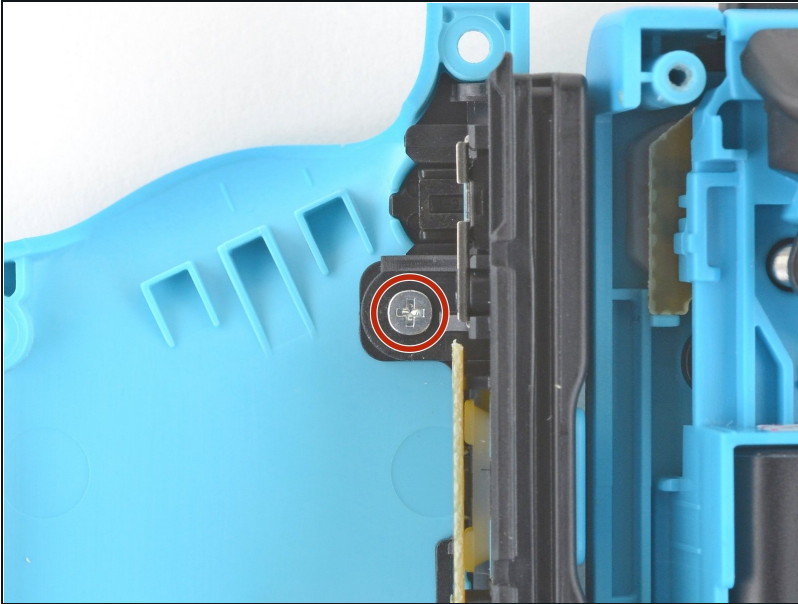
Step 3 — Open the Joy-Con



- With the charging rail facing away from you, open the the Joy-Con like a book.

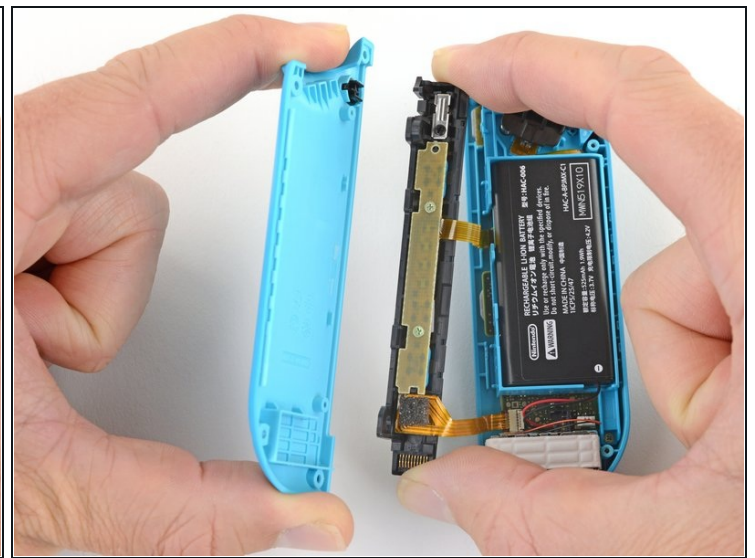
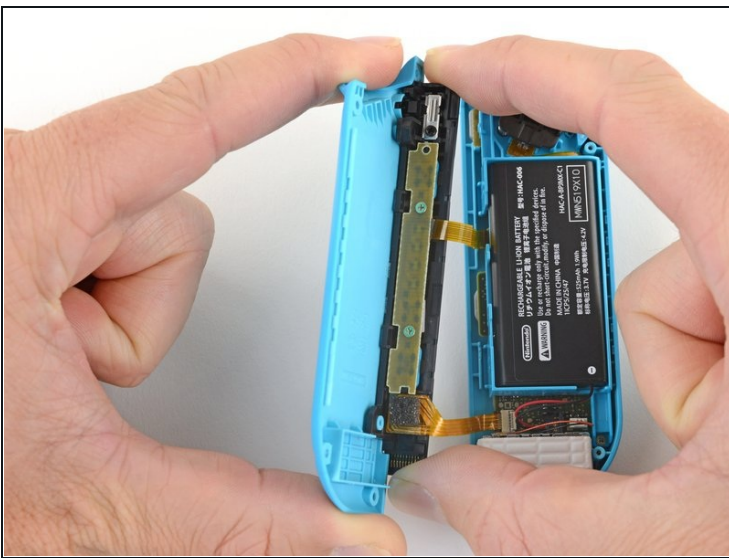
⚠ Don't try to fully remove the back panel. There are still two cables connecting the charging rail to the motherboard.

Step 4 — Unscrew the charging rail



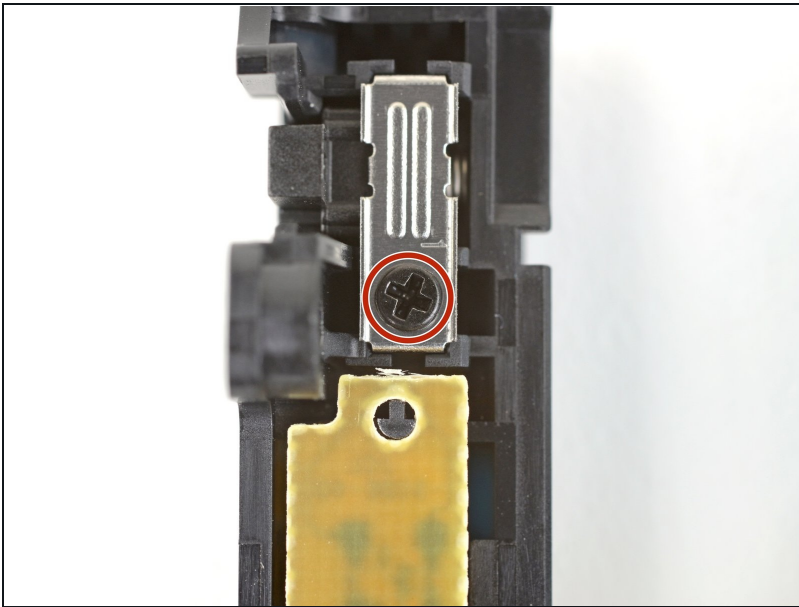
- Use a Phillips #00 driver to remove the 2.5 mm screw securing the charging rail.

Step 5 — Remove the back panel



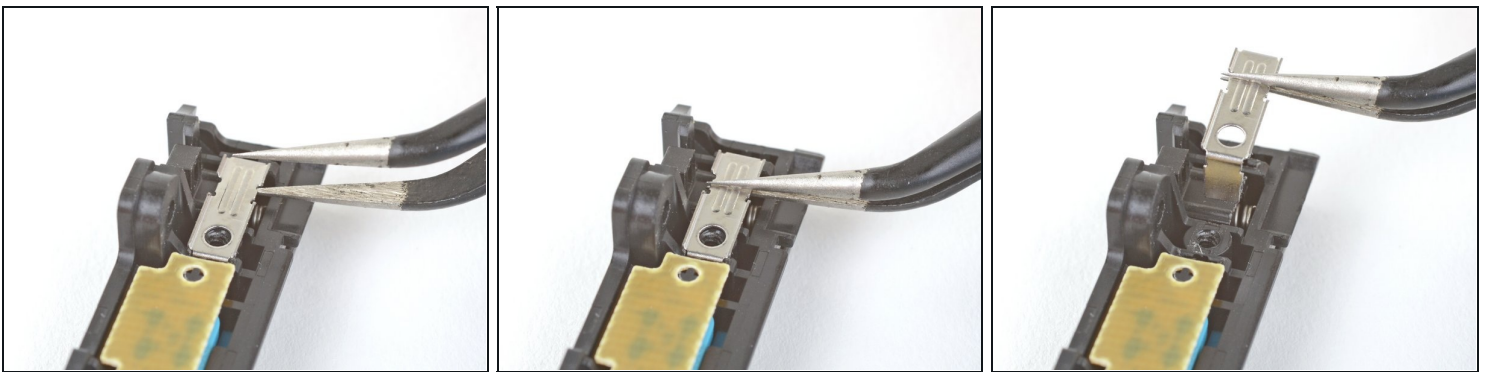
- Pull the back panel straight off of the charging rail to remove it.
- ☑ There's a chance the rail unlock button will fall out of the back panel. During reassembly, make sure it is [installed correctly](#), with the tab on the button slotted into the notch in the back panel.

Step 6 — Remove the buckle lock bracket



- Use a Phillips #00 driver to remove the screw securing the buckle lock retaining bracket.

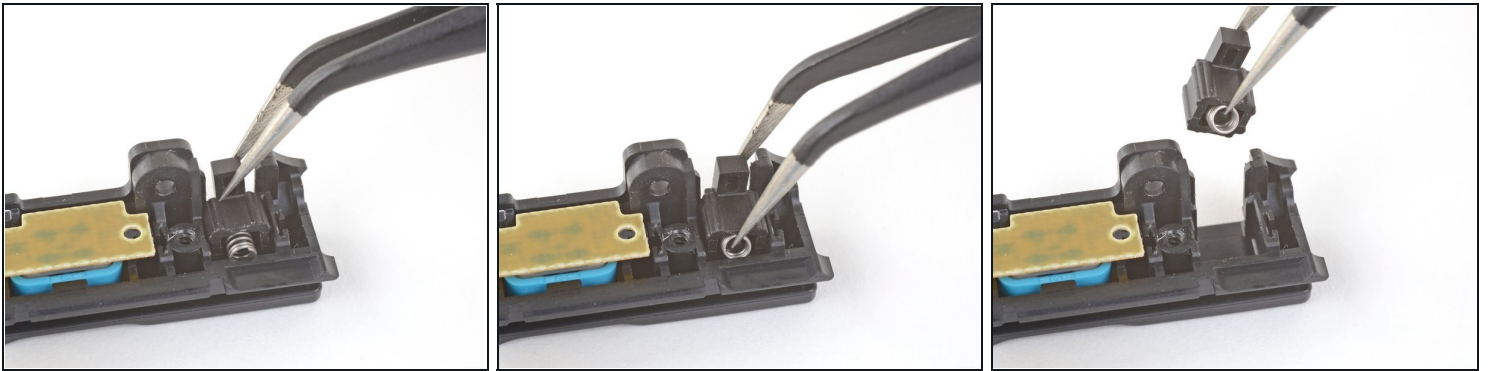
Step 7



- Slide one side of a pair of pointed tweezers under the flat part in the middle of the buckle lock bracket.
- Grasp the bracket with the tweezers and pull the bracket straight away from the charging rail to remove it.

⚠ Be careful when you remove the bracket, as the spring and old buckle lock may shoot out and be easily lost.

Step 8 — Remove the buckle lock



- Lift the buckle lock slightly out of its slot in the charging rail, just until the spring is exposed enough that you can grab it with tweezers.
 - Grab the buckle lock such that the tweezers are around both sides of the lock and holding the spring inside the lock.
 - ⓘ When you pull the lock out, the spring can shoot out. Make sure you have a firm grip with the tweezers.
 - Pull the buckle lock out of its slot in the charging rail.
- ✦ During reassembly, make sure to move [the spring](#) from the old lock to the new one.
-

To reassemble your device, follow the above steps in reverse order.

Take your e-waste to an [R2 or e-Stewards certified recycler](#).

Repair didn't go as planned? Check out our [Answers community](#) for troubleshooting help.